

# CHESS minister !



OCTOBER 1988

Welcome to the October issue of Chess Minister! and the new season of the Clergy Correspondence Chess Club. Special welcome to our new members: G.Wood; A.Norris; M.Smith; P.Couch. We hope they enjoy their membership of our Club. I hope there were not too many prospective members unable to contact me because of the postal strike. In any case membership is up again and I have had to re-introduce a Division 4. As last timethe bottom players from each Div. 3 are relegated to Div. 4; new players still entering in Div. 3.

You will of course be aware by now that both first and second class letter rates have increased by 1p, thus adding 20-50p a game to our playing costs. In addition, even though the Post Office has returned to what it considers normal working, second class post in particular is now so inefficient as to be almost not worth using. It does to some extent depend on where you live - some routes are remarkably quick, whilst others are disastrously slow. Last season John Gowing and I found that the route from Milton Keynes to Stockton was at times quite incredibly bad (in fact from some of the mystery tours our letters had been on I wonder if the Post Office actually know where the two towns are) and although neither of us used anything like our full time allowance we had to resort to 1st class post, and telephone to get our games finished. Do please be prepared to do this yourselves if the post on your routes is slow also. It might be worth pointing out that we don't always help the Post Office to help us, in particular those of you who re-use envelopes. You must completely cover up the old stamp, the old postmark, AND any of those phosphor dots if there are any as these are part of the automated sorting procedure. If you in fact leave these visible and your move goes on a mystery tour of strange parts of the UK you really have only yourself to blame.

Subscriptions are now due for the new season and should be sent direct to the Treasurer please. Although postage costs have risen, we have pegged our annual subs. at £1.50 for the time being, but this will probably have to rise next year. Life membership now costs £22 (being £1 for each year of the Club's age) but if you join as a Life Member you need never pay anything again... Since the last magazine we have one new Life Member - 1987/88 Champion John Morris.

In addition to the usual notices in the Church Press, I was browsing one day on the BBC Ceefax chess diary pages and wondered if it was worth asking them to give us a mention. So I dropped them a line, they duly put us on, and I received more enquiries from that source than from any other this year! This must say something about the preferred reading matter of Chess playing clergy... We also got a mention in the Daily Telegraph Saturday chess page - thanks to their chess correspondent David Spanier, and have been included in the listings of organizations in the 1989 Parson's Pocket Book, this last having only recently been published it is too early to say if it will achieve anything. I also have applied for a listing in the next issue of the UK Christian Handbook (Marc Europe) due out later in the year.

Sending the last Chess Minister! to Ray Keene also produced an invitation to join the English Chess Association as a corporate member, which we have duly done. Apart from helping to promote chess in our country, particularly encouraging up and coming young players, this association also organizes events around the country. As members we would be allowed to enter one member into these tournaments free. We have only just joined so I am not yet entirely clear about this, but if any of you are planning to enter any ECA sponsored tournament let me know as you may be able to take up our free place.

Talking of organizations to which we are affiliated, it was mentioned briefly in the last issue of Chess Minister! that John Gowing felt he had to step down as our representative at British Postal Chess Federation Executive meetings. It would help if someone in the club felt able to take on this task even if you could not attend every single meeting. Meetings are held four times a year (always Saturday) in Leicester, or London, so someone living in the South Midlands would be about right! As our rep. you would receive our copy of the BPCF magazine 'Information Circular'. While on the subject of the BPCF you can also join as an individual 'Vice President' for £5 a year, and in return you will receive the above mentioned magazine. At present while stocks last there is a special offer of a free copy of a book to all new Vice Presidents. The book contains all 78 games of the 'Foster Memorial' from 1974-78 with biographies of the players and their own annotations of the games. If you are interested contact Malcolm Peits, 14 Linden End, Aylesbury, Bucks. HP21 7NA.

Mention of John Gowing leads me to report that he has made a good recovery from his recent stroke, though he has had to cut back on some of the things he does. He thanks all those members who prayed and sent him best wishes. Also thanks from Brian Shephard who shared with us his employment problems in his recent biography. Brian has now got a job as a lecturer at the Church Army Training College initially in London though as you may have read the college is due to move to Sheffield in a year or two. Brian also thanks all those who sent him best wishes or prayed for him, and I am sure we all wish him happiness in his new job. Others to have moved are Chris Wiltsher to a new post in Durham, and Fred Sydenham continuing retirement in Cornwall.

In our match against the Scottish CCA 10 results are in so far, and we are leading by 6.5 to 3.5. So far, so good, but there is a long way to go with another 20 games to be finished by 31st January next please.

Some of you will be receiving a new home produced scorecard for your games this season. Smaller in size than the previous ones it still contains room for two games and diagrams (with an extra date column for total time used) and still fits standard window envelopes, but also fits a standard A5 card. I will try to distribute them in such a way that if you all exchange scorecards at least once this season (even if you play by post) you should all get a chance to see one. I would be grateful for your comments on this card and if it meets with general approval we can make more for future use.

Thanks to our advertisers in this issue - Brian Eley as usual and Pergamon who have taken over production of 'Chess' magazine. Their valuable contributions have enabled us to add an extra 4 page sheet to this issue of Chess Minister! Do please in return support our advertisers when you require chess supplies.

Finally, when you turn to the results page from last season you will see that once again scores are given in proper chess fashion as one, zero, half rather than the W D L of recent issues. I have finally discovered how to persuade my computer to activate the half on my typewriter. I am enormously grateful to The Rev. John Schild of the Church Computer Users Group for showing me how it is done!

Best wishes to all for some good games in the 1988/89 season. The next issue of Chess Minister is due in January, hopefully with results of our current match against SCCA and details of a new match I hope to arrange for next year against the Civil Service Chess Association - they in particular should appreciate our magazine title, though I am not aware that Sir Humphrey plays the game...

Bruce Carlin.



**PERGAMON**  
**CHESS**

**WELCOMES**  
**A New Era**

CHESS, Britain's oldest independent chess magazine, has been re-launched as a new, bright and colourful, A4 monthly magazine.

- ★ CHESS is now established as Britain's No. 1 chess magazine and is read world-wide.
- ★ CHESS is written for players of all ages and all standards.
- ★ CHESS carries top quality features written by Masters world-wide.
- ★ Regular articles on Opening Theory, Innovations, Endgames, Combinations, How Good Is Your Chess?, Computer Chess, Prize Competitions, Junior News and much more.

Britain's biggest, brightest, best selling chess magazine is now available to you wherever you are.

*For further details contact:*

**PERGAMON CHESS**

RAILWAY ROAD, SUTTON COLDFIELD,  
WEST MIDLANDS, B73 6AZ ENGLAND.

Telephone: 021-354 2536/2537

FAX: 021-355 0655



1987/88 : REVIEW OF THE SEASON

As already revealed in the July Chess Minister! John Morris is our current champion after just one season in Division 1. Poor Geoffrey Harper seems doomed to be perpetual runner-up, but maybe his day will come! Our President Ivor Davies decided he had to do more than 8 draws this year, and so managed two wins and a loss to be again 3rd. Eric Hodgess Roper and Gordon Geddes (as he more or less predicted in his biography!) are back down to Division 2.

Division 2A was very tight indeed, and was ultimately decided on adjudications. Brian Stevenson goes back to Division 1 gaining the victory over Anthony Foster by virtue of more wins. William Nichol survives in Division 2 for the same reason, while Eric Bailey and David Sutcliffe return to the third division.

Division 2A was clearly won by David Hulme, a player on his way up and now moving into the top division. Only Paul Waterfield prevented him gaining a perfect score. Arnold Hurt stays put, while Sigsworth and Cullen drop down next season.

Tim Partirdige clearly won Division 3A, while Robson beat Williamson on a tie break for second place. Clifton Joy was last as Chris Wiltsher did not in fact take part (this was apparently my fault as he had said he didn't want to, I either overlooked it or never received his letter - apologies).

Division 3B fell apart completely. Smith withdrew and Hair just vanished into thin air part way through the season - all our attempts to contact him by letter or phone failed. Thus there were just Wright and Mackenzie left, and as they drew both their games there was nothing for it but to draw lots to decide who gained promotion, and the lot fell upon Wright. I am always sad when a Division falls apart like this (as happens from time to time) as the players do not get the games they hoped for and the end result is always slightly unsatisfactory, but there really isn't anything we can do about it.

Jim McIntyre took a clear win in Division 3C, only Davies (the other one that is) frustrating his perfect score to finish second ahead of Nye and Goode.

Division 3D was again close, and again hinged on a couple of adjudications, Brian Shephard gaining the verdict by the slender margin of half a point from John Hutchison. Fred Sydenham (who played single games for double points throughout) beat Carlin on a tie break and John Gowing brought up the rear.

And so on to a new season. As always the top member of each Division is promoted, the bottom two relegated, the others either staying put or moving sideways according to their placings. Those bottom of 3rd Divisions are relegated to Division 4 for a single season (unless membership grows even further) to make room for new players to be dispersed among the third divisions.

Can I again ask you please to try and finish your games if at all possible by sticking to the time control and using first class post or phone later in the season if necessary. The large number of adjudications meant that I could not do as much as I wanted on preparing the new season before my September holiday, and this may mean that the new season is a little late getting underway which if we are not careful leads us into a vicious circle... so do please try.

CLERGY CORRESPONDENCE CHESS CLUB : 1987 / 88 SEASON : RESULTS

DIVISION 1

	M	H	D	R	G	
Morris	XX	10	1½	1½	11	6
Harper	01	XX	½½	10	11	5
Davies	0½	½½	XX	½1	1½	4½
H.Roper	0½	01	½0	XX	½1	3½
Geddes	00	00	0½	½0	XX	1

DIVISION 2A

	Sn	F	N	B	Se	
Stevenson	XX	00	1½	½1	11	5
Foster	11	XX	½0	½½	½1	5
Nichol	0½	½1	XX	0½	11	4½
Bailey	½0	½½	1½	XX	½1	4½
Sutcliffe	00	½0	00	½0	XX	1

DIVISION 2B

	He	W	Ht	S	C	
Hulme	XX	½½	11	11	11	7
Waterfield	½½	XX	½½	½½	11	5
Hurt	00	½½	XX	1½	11	4½
Sigsworth	00	½½	0½	XX	11	3½
Cullen	00	00	00	00	XX	0

DIVISION 3A

	P	R	Wn	J	Wr	
Partridge	XX	½1	1½	11	VV	5
Robson	½0	XX	½½	11	VV	3½
Williamson	0½	½½	XX	11	VV	3½
Joy	00	00	00	XX	VV	0
Wiltsher	VV	VV	VV	VV	XX	V

DIVISION 3B

	W	M	S	H	
Wright	XX	½½	VV	VV	1
Mackenzie	½½	XX	VV	VV	1
Smith	VV	VV	XX	VV	V
Hair	VV	VV	VV	XX	V

DIVISION 3C

	M	D	N	G	
McIntyre	XX	½1	11	11	5½
Davies	½0	XX	10	1½	3
Nye	00	01	XX	½½	2
Goode	00	0½	½½	XX	1½

DIVISION 3D

	Sd	H	Sm	C	G	
Shephard	XX	11	00	½1	11	5½
Hutchison	00	XX	11	1½	1½	5
Sydenham	11	00	XX	00	11	4
Carlin	½0	0½	11	XX	½½	4
Gowing	00	0½	00	½½	XX	1½

McINTYRE V GOODWIN

This game, kindly submitted by Jim McIntyre is from our current match against the Scottish CCA. Jim says that his opponent, Beejay Goodwin is a great writer of letters and they have struck up something of a friendship during their games. Jim lost the game, but submits it with analysis by his opponent:

The good old King's Gambit, secret weapon of Bronstein, Tal, McIntyre and all those 'romantic' players...

1. e4 e5  
2. f4 exf4

My basic chess instinct tells me to take the gambit pawn and hold on for dear life. To refuse would not be in my swashbuckling nature!

3. Nf3 ...

The first critical stage. Jim mentioned in his opening letter that he enjoyed studying openings, so I swithered about playing something 'safe' like 3...d6 (Fischer) or 3...d5, or to look for something a little unusual. After a search I came across the first step in the 'Cunningham Reformed Gambit'...

3. ... Be7  
4. Bc4 Nf6

Cunningham's original idea was 4...Bh4. This check however is only harmful to Black, but the 'reformed' gambit introduced by Carl Schlechter offers Black a satisfactory game.

5. Ne5 ...

I was surprised by this. Black's previous move practically forces 5 e5 after which Black plays ...Ng4 and stabilizes the centre with ...d5 or threatens with ...d6. White can only oppose these plans to a certain extent, but cannot really prevent them. Protecting the

pawn by 5 Nc3 is answered by ...Ne4 which is the main point of 4...Nf6 in the first place.

- 5 ... d5  
6 exd5 Nxd5  
7 Nxf7 ...

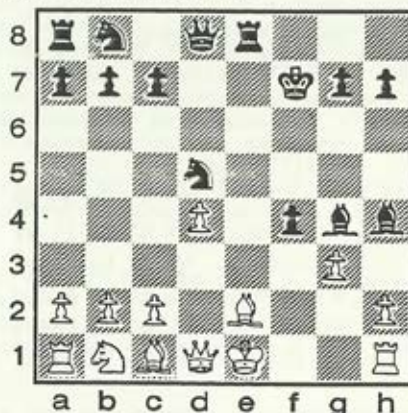
A mistake! To sacrifice a Knight for a pawn can surely lead nowhere. d4 would have released the black squared Bishop and coupled to a future Kg1 would have been more troublesome to Black.

- 7 ... Kxf7  
8 d4 Bh4+

Throwing everything into a King's side attack.

- 9 g3 Re8+  
10 Be2 Bg4

The basic pin, but what complications abound. If White doesn't castle, ...f3 proves troublesome.



- 11 O-O Bxe2  
12 Rx2f4 ...

White's position is hopeless! The text move is probably best as nothing else offers even the remotest hope of survival.

- 12 ... Nf4  
13 Qd2 Nh3+

White resigns. Mate is inevitable. If 14 Kh1 Qd5 mate; if 14 Kg2 Qd5 is still mate in three.

## CHESS SETS

### K851 Set

The best quality club set available! Solid plastic in black and ivory with a matt finish. Staunton pattern. Felted with 3.75 inch kings. Supplied in a tight-lidded polythene box - virtually unbreakable!

£7.25 each £39.95 for 6 £77.95 for 12.

### K852 Set

A K851 Set supplied in an elegant green card box with gilt lettering.

£6.60 each £35.95 for 6 £69.95 for 12.

### K853 Set

A K851 Set supplied in a polybag. £5.95 each. £32.95 for 6. £62.95 for 12

### P867

A Staunton pattern solid plastic set in lightwood and darkwood effect with 3.75 inch kings. Supplied in our tight-lidded polythene box. £12.95 each.

### P964 Set

A high quality solid plastic set in rosewood and ivory. The design is traditional Staunton pattern which is more substantial than the French style of K851. Kings are almost 4 inches high. Supplied in our robust polythene box. £14.95 each £42.00 for 3.

### P653 Set

A good quality solid plastic set in black and ivory. Staunton pattern and felted with 3 inch kings. £3.95 each £21.95 for 6 £41.90 for 12

### P655 Set

A P653 Set supplied in our tough polythene box - ideal for club use!

£4.95 each £27.95 for 6 £53.90 for 12.

### AS05 Set

A Classical Staunton pattern set in sheshamwood/whitewood. Double loaded and felted with 3.5 inch kings. The strong grain of sheshamwood contrasts well with the pleasing warm tawny colour of the white men. Supplied in a hinged-lidded wooden chest with clasp. £39.95 each.

## CHESS BOARDS

### B200S Board

The ultimate in folding boards! A board which is really well designed by a team of experts and praised by many of the world's top players. Two inch squares in restful green and oyster with ample border. Substantial, durable, easy to clean and very highly recommended.

£6.95 each £38.90 for 6 £66.00 for 12

### K200G Board

A semi-rigid plastic board (not polystyrene!) with 2 inch green and white squares. Best buy for clubs! £4.95 each £26.95 for 6

### CNG200 Board

A rigid board with two inch squares in green and white. Fibreboard base. An ideal lightweight board - very popular for club use.

£7.95 for 2 £21.95 for 6 £40.95 for 12

### H200B Board

A rigid board with two inch squares in brown and cream. Fibreboard base. Algebraic notation on borders. Weight a mere 700g. Very durable for club use. £6.95 for 2 £18.95 for 6 £34.95 for 12

### C201L Board

A hard-wearing lightweight roll-up board in vinyl (not plastic paper!). Two inch squares in brown and white. £1.95 each £16.95 for 12

### H201G Board

A vinyl roll-up board with green and white two inch squares, with a heavier grade of material than C201L. Algebraic notation on border.

£2.45 each £11.95 for 6 £19.95 for 12

### P20W Board

A high quality inlaid wooden board with two inch walnut and sapele squares. One inch flush border. Quarter felted on reverse. £24.95 each

### RX200 Board

An inlaid wooden board with a flush one inch border and two inch squares. Slightly sub-standard, you'd hardly notice! Available at a much-reduced price: £9.95 each £24.95 for 3.



### HT51 Trophy Collection

In order to provide a good selection of trophies at a bargain price for the use of clubs and schools, we present this attractive range of gilt trophies. Each trophy consists of an Italian marble block as base with an engraving plate for suitable inscription (we can engrave this for you), a gilt crown or fluted column to provide height, the whole surmounted by a chess motif.

£4.95 each

£23.95 for 6.

### SUNDRIES

#### HV02X Travelling Set

A revolutionary new idea in travelling sets. Size 6.5 x 4 inches and the thickness of a slim wallet. Flat disc pieces. Having all the advantages of expensive and heavy magnetic sets with none of the disadvantages, this lightweight, stylish set is just right for your pocket!

£3.95 each

£10.95 for 3.

#### HL11 Lightning Timer

This electronic timer operates in 5 second steps upto 25 seconds. Runs on easily obtained batteries or a transformer input.

£29.95 each.

#### PH03 Travelling Set

A good quality plug-in plastic set with space for captured men. Clear lid. 4 inch square metal board.

£3.95 each

£15.95 for 5

#### M02LF Key Fob

Black leather key fob with enamelled knight motif.

£2.50 each. £8.75 for 5.

#### MB11 Metal Badge

A circular metal badge with brooch fastening. Chessmen/board motif

£0.90 each

£8.00 for 10

£14.00 for 20

#### MB12 Metal Badge

A diamond-shaped metal badge with brooch fastening. Heraldic Knight motif.

£1.50 each

£11.95 for 10

£19.95 for 20

#### HD01 Demonstration Set

A development of modern science. The ultimate design - everything a demonstration set should be! Easy to operate with distinctive green and white 2.75 inch squares, with pieces developed for maximum clarity. Folds in seconds to a slim lightweight size of 12 x 24 inches for ease of mobility and storage.

£29.95 each

£85.95 for 3

#### D11 Chess Tie

An elegant chess motif in gold and white makes this tie the height of sartorial good taste. Available in dark blue, brown, green and red. Please specify your choice.

£3.95 each.

£12.95 for 4

#### BM01 Bookmark

An elegant metal bookmark with enamelled chess motif.

£1.60 each

### \*\*\*\*\* -INFORMATION- \*\*\*\*\*

The above items are only a small selection of the equipment normally in stock. In addition we are the largest stockists of chess literature in the U.K.. If you require the latest publication on any particular topic why not try us first?

Write or phone for lists of your particular interest. 50p in stamps brings you a sample copy of our magazine CHESS PRESS and lists. Prices include VAT where applicable, there are no extra charges for delivery of equipment.

Every effort will be made to maintain prices as shown, however it may be necessary to amend them without notice. Goods are returnable within 7 days if unsuitable for any reason whatever.

We accept Official Purchase Orders. Mail orders, with appropriate remittance, will be dealt with as soon as possible - usually from stock - but if we are unable to execute your order within 20 days of receipt you will be notified.

Holders of all major credit cards may order by mail or by phone on Rotherham(0709) - 873653.

## CLOCKS

### Standard Clock (STR1)

The ideal clock for personal use. Moulded case with simulated wood grain finish. Reliable German movement which has outstayed all competition for over thirty years! Size 6 x 3 x 1.5 inches. Weight only 260g. Two year guarantee from date of purchase and inexpensive service work (in the unlikely event of it being needed!) after that.

£26.95 each £72.00 for 3 £139.95 for 6

### Extra Clock (EXR1)

The automatic choice for knowledgeable organisers whose first priority is a reliable and well designed timer. Specifications as for Standard clock, but without the wood grain finish. Exceptional value.

£22.95 each £65.95 for 3 £127.95 for 6

### Tourney Clock (TUR1)

A tournament quality clock. German with moulded case and metal trim.

£18.95 each £51.00 for 3 £99.00 for 6

### CCW10 Clock Case

A craftsman made wooden carrying case designed to hold ten clocks safely and in instant readiness for matches.

£29.95 each

## STATIONERY

### H10 Score Sheets

A full-sized score sheet with space for 70 moves. Pale green with wording to allow for adjournment or adjudication.

£1.05 for 100, £4.55 for 500, £7.60 for 1000, £11.65 for 2000.  
OVERPRINT - £9.00 irrespective of quantity.

### H50 Score Book

Neat pocket size, sturdily sewn binding. Two-page numbered index to games. Space for 50 games each of 70 moves with diagram.

£1.25 each £5.50 for 5 £18.95 for 20

### H100H Score Book

A Casebound score book for 100 games of 70 moves each. Sturdily sewn binding in the craftsman's tradition. Numbered index to games.

£2.50 each.

### H25/100 Score Pad

A metal ring-bound pad for 100 games of 70 moves each. Pages are easily removed or added.

£1.95 each £8.95 for 5.

### H25/R1 Refill

A 100 page refill for the above score pad.

£1.25 each.

### H04 Dry Transfers

The last word in diagrams! Neat, accurate in detail and easy to use. Over 870 symbols per set. Large clear style. Each set comes complete with its own gummed diagram blanks. Very useful for journalists and magazine editors.

£4.95 each £13.95 for 3 sets.

### H43 Adjournment Envelopes

Designed to ease the complicated procedure of sealing a move.

£3.50 for 100

### H11 Correspondence Score Sheets

Pale green, printed on sturdy card with space for 2 games, each with diagram. Also to be used as an address card for window envelopes.

£1.05 for 15 £4.95 for 100

### H15 International Correspondence Postcards

Space for four games, with all remarks given in four languages. Well designed and printed on good quality card - the best available!

£2.95 for 100 £4.50 for 200

## TROPHIES

### T35 Challenge Shield

A dark wooden shield measuring 12.5 x 10.5 inches. Top scroll plus central plate for engraving together with eleven annual plates. Chess motif on central plate.

£24.95 each.

### T5 Shield

A rectangular wooden shield 6 x 5 inches with chess motif.

£5.25 each.

### TN66 Medallion

Large gilt English rose medal with chess motif.

£1.40 each. £6.95 for 6

### T1 Shield

A four-inch high wooden shield with chess motif in centre.

£2.60 each.

## BARGAIN BOOK OFFERS

The quoted prices are post free and are correct at July 1988.  
To order, please see information given on previous page of this leaflet.

ABBREVIATIONS: H = Hardback, S = Softback, A = Algebraic, D = Descriptive, pp= pages, R = Recommended, LI = Loose-leaf in binder.  
\* = Elementary, \*\* = Average Club Standard, \*\*\* = Strong Club Player, \*\*\*\* = Master or Reference Work.

COMBINATIONS IN THE MIDDLEGAME - BONDAREVSKY I	1977 S D 79pp (Spassky's trainer)	£ 1.50
CHESS WITH THE MASTERS - CAFFERTY B & GILLAM A	1977 S D R 80pp **	£ 1.50
THE GREAT CHESS AUTOMATON - CARROLL M C	1975 S 126pp (a fascinating account)	£ 1.95
THE LONE PINE TOURNAMENT 1979 - CHANDLER M	1979 S A R 90pp *** (Annotated)	£ 1.50
PLAYERS CHESS ANNUAL 4 - CHRISTIANSEN L GM. (Ed)	1984 S A R 594pp *** (Top value!)	£ 9.95
PLAYERS CHESS ANNUAL 5 - CHRISTIANSEN L GM. (Ed)	1984 S A R 526pp *** (Top value!)	£10.95
PLAYERS CHESS ANNUAL 6 - CHRISTIANSEN L GM. (Ed)	1985 S A R 320pp *** (Top value!)	£ 9.95
CHESS: THE HISTORY OF A GAME - EALES R	1984 H 240pp (Readable)	£ 9.95
BASIC CHESS OPENINGS (No 4) - EDWARDS R	1976 S D 153pp **	£ 3.50
BOBBY FISCHER AND HIS PREDECESSORS IN THE WORLD CHAMPIONSHIPS - EUWE M	1976 H D 214pp ***	£ 3.95
THREE KNIGHT'S GAME - EVANS L	1971 S D 20pp **/***	£ 1.00
A HISTORY OF CHESS - GOLDENBEK H	1976 H A 259pp (illustrated)	£ 5.95
QUEEN'S INDIAN DEFENCE: RECENT DEVELOPMENTS IN 4...3 - GREFE J	1984 S A 90pp ***	£ 3.95
SOFT PAWN - HARTSTON M	1980 S 102pp	£ 3.25
FURTHER STEPS IN CHESS (No 2) - HINDLE D M	1968 S D 116pp **	£ 3.50
SICILIAN DEFENCE 1: KAN (RHM Survey) - KARPOV A & HARTSTON W	1979 LI D R 112pp ***	£ 3.95
MY GAMES - KASPAROV G	1983 S A 212pp ***	£ 6.95
FIGHTING CHESS (2nd EDITION) - KASPAROV G & MADE R	1985 S A 190pp **/***	£ 4.95
MANOEUVRES IN MOSCOW KASPAROV/KASPAROV 2 - KEENE R & GOODMAN D	1985 S A 128pp **/***	£ 4.95
UNUSUAL ENDINGS - KING K & SMITH K	1980 S D 32pp **/***	£ 1.95
FIRST BOOK OF CHESS STRATEGY - LISITSYN G & CAFFERTY B	1976 S D 96pp *	£ 1.95
SECOND BOOK OF CHESS STRATEGY - LISITSYN G & CAFFERTY B	1976 SD 71pp **	£ 1.95
FIRST & SECOND BOOKS-both together - LISITSYN G & CAFFERTY B	1976 S D R 167pp **/**	£ 3.60
CHESSBOARD DELIGHTS - MANSFIELD C	1976 S D 121pp	£ 2.15
KING PAWN OPENINGS - MAROVIC D & SUSIC I	1975 H D 264pp **	£ 6.95
FRENCH WINNER: MODERN & AUXILIARY LINES - MOLES J & WICKER K	1979 H D 285pp *** (A classic)	£ 6.95
ASSESS YOUR CHESS FAST - O'KELLY DE GALWAY A	1976 H D R 232pp ***	£ 5.95
COMPLETE CHESS STRATEGY 2: PAWN PLAY & THE CENTRE - PACHMAN L	1976 S D 190pp **	£ 4.95
KING'S INDIAN 1: AVERBAKH SAEMISCH (RHM Survey) - PETROSIAN T, UHLMANN W et al	1978 LI R D 114pp ***	£ 3.95
THE SICILIAN SCHEVENINGEN - PRITCHETT C	1977 H D R 216pp ***	£ 6.95
ULF ANDERSSON'S DECISIVE GAMES - RAVIKUMAR V	1984 S A 80pp **/***	£ 2.95
TIMMAN'S SELECTED GAMES - RAVIKUMAR V	1983 S A 200pp **/***	£ 4.95
GREAT CHESS UPSETS - RESHEVSKY S	1976 S D R 320pp **/***	£ 3.95
CHESS SACRIFICES - SHANKOVICH L	1976 S D 184pp ***	£ 3.95
THE MODERN CHESS SACRIFICE - SHANKOVICH L	1980 S D 238pp **/***	£ 5.95
CHESS MISTAKES: HOW TO DETECT AND AVOID THEM - SOLTIS A	1980 H D 228pp **/***	£ 6.95
A PROGRAMMED INTRODUCTION TO THE GAME OF CHESS - SULLIVAN H	1972 H D 206pp *	£ 3.95
THE MARSHALL ATTACK - MADE R & HARDING T	1974 H D 260pp ***	£ 5.95
CANDIDATES: MONTPELIER 1985 - MADE R (Ed)	1987 S A 32pp ***	£ 1.95
NIGEL SHORT WINS MIJK AAN ZEE 1986 - MADE R G	1986 S A 23pp ***	£ 1.00

July 1988

24 hour answering service  
Rotherham (0709) - 873653

**BRIAN ELEY & Co.**

Dearne Road  
Bolton-on-Dearne  
Rotherham, ENGLAND.  
S63 8JR

GETTING TO KNOW YOU

TIM PARTRIDGE (Div. 2A & former Secretary of CCCC) writes:

I was born in Yorkshire but was brought up in Northamptonshire, and, unusually, I boarded at a State Grammar School, M.C.S. Brackley. In 1957 I went to Kings College, London where I gained a degree in Physics and Maths, and also an A.K.C. (non-theological). By this time I was engaged to Esther, the daughter of my local Rector who was training as a nurse at St. Georges Hospital. Two years at Wells Theological College followed, then in 1962 I was ordained to a title at St. Catharines, Gloucester, and later that year I was married. In 1965 we moved to a rural group of parishes in Lincolnshire, one son was already born and we had two more sons and a daughter whilst at Holbeach Hurn. It was here that I became involved in the CCCC, and took over from our current President as Secretary. In 1974 we moved to our present parish of Bugbrooke, a dormitory village of about 3,000, where we have seen immense changes in our 14 years here. I have just given up being Rural Dean after 6 years, and have been a canon of Peterborough Cathedral since 1983. My other great love is Rugby, I played for 36 seasons, and had the thrill of playing with each of my sons for our local village side, now I act as a groundkeeper at Twickenham.

ANTHONY FOSTER (Div 2A) writes: I was born in St. Albans and went to Downing College Cambridge where I read Natural Sciences, Part 2 in Chemistry, & Theology Part 2. I went to Nigeria as a C.M.S. missionary, teaching Chemistry and Scripture. On returning to England I was married to Juliet who was also teaching in Nigeria. I went to Ridley Hall, Cambridge and was ordained in Wakefield in 1966/67 by Bishop John Ramsbotham. During our time in Wakefield our children Stephen & Helen were born. We all went out to Uganda in 1969 for 5 eventful years, including the first three of Idi Amin's regime. Sara was born during this time and the 5 of us were miraculously kept safe and well through the killings and shortages. Since 1974 I have been Vicar of Mount Pellon in Halifax, which has proved a far tougher missionary challenge than Africa was. For OTB chess I belong to a thriving Halifax club. I would currently value your prayers as we settle into a new Vicarage built on the vegetable garden of the old one, adjusting to a smaller house and disposing of material possessions.

NORMAN DAVIES (Div. 3C) writes: I was born in Cardiff in 1937 and learned chess both at school and in my father's signalbox. I did National Service in the RAF and in 1958 I went to Worcester College Oxford to read Classical Honour Moderations. I was Baptised and Confirmed in 1959 and changed to Theology for the last 7 terms, and was at Cuddesdon from 1962-64. I served a curacy in Southwark, where Jane and I were married in 1966. The following year saw the first of our five children born, and my move to the non-stipendiary ministry for twenty years, the last 13 as a comprehensive headmaster - the sort of school where classics is not dead! On Holy Cross Day 1987 I was inducted as Vicar of St. Mark with St. Margaret Plumstead, still in the 'Honest to God' part (and tradition) of London. In the course of the pilgrimage chess (of course), rugby when younger, work as an examining chaplain, so-directing a county course of Pastoral care, golf, etc. etc. - and for the future parish priesthood in SE18.

\*\*\* \*\*

Thanks to these three members for their biographies. We do seem to have members who have lived some interesting lives in CCCC and it is nice to read a little about each other. If you have not yet sent your biography please do so for one of the forthcoming issues.

Our season runs as usual from October to July. All results should be in, or games sent for adjudication, by July 31st 1989.

Opposite are the Divisions for this season. Each person plays each other in his division twice, once each as white and black, though you can agree to play one game for double points. The notation used should be agreed between you, though as ever I encourage algebraic which should now be regarded as the standard notation. At the end of the season one player is promoted and two relegated from each division. Others are moved sideways to ensure fresh opposition. Ties are decided firstly by the number of wins, then black wins (so let me know this), black draws, the games between the two tied players, and finally if all this fails by the (Biblical?) precedent of drawing lots!

If you receive the game card you are responsible for starting the games. Otherwise you should expect to hear from your opponent within a few days. It is always possible that letters go astray in the post, and especially so at the moment, so if you haven't heard from anyone in your Division within fourteen days of receiving this, please contact the Secretary.

New players have a copy of the full playing rules enclosed, but as always a reminder of the basics: 20 days are allowed for each 10 moves. Time saved is carried forward. Same day reply and days on which there is no postal collection do not count at all. Each player can have 1 day off during a game after notifying his opponent.

Though not strictly allowed by the BPCF, we do allow the use of telephone to transmit moves. If you are efficient it is both quicker and cheaper. The following guidelines can help:

i. Number the games 1 & 2 to avoid confusion, and read back your opponent's last move for confirmation before giving your new one.

ii. Arrange mutually convenient times to phone during cheap rate, and if out try to ensure that someone else in the house can take down a move, or get an answering machine!

iii. Always have pen and paper by EVERY phone in the house.

iv. If using algebraic the phonetic alphabet can avoid confusion.

v. Exchange scorecard by post every 10 moves or so (possibly with a diagram of the position) as a check that no one has gone wrong. I would like to stress item (iii) above. Phone is only cheaper than mail if you put across your move in two units (90 seconds in cheap rate costs about 10p). Sometimes there may be a problem to clear up, and occasionally we all like a bit of a chat, but as a rule it should be possible to transmit a move in one unit (45 secs.) IF you are organized. Remember if YOU are not organized it is the other person's phone bill that rises while you find pen or paper. That is not fair.

Whilst second class post (for those who prefer post) is normally acceptable, it can be dreadfully slow these days (7 days is not uncommon). If it looks like your game is not going to finish please consider changing to 1st class post or telephone from April or May. Last season we again had a large number of games submitted for adjudication that with a bit of effort could probably have been finished.

A brief note for members of Division 3D re. John Hutchison. You can use a normal UK 1st or 2nd class stamp for a BFPO Europe address. Having played John myself last season I found that our letters were taking no longer than average inland 2nd class letters and often were considerably quicker, so it really doesn't make any difference that he lives overseas. Phone will however cost you more unless you are stupendously efficient!

**CCCC DIVISIONS 1988/89****DIVISION 1**

Rev. Cn. I.L. Davies, The Vicarage, Knighton, Powys. LD7 1AG. 0547 528566  
Rev. G. Harper, The Vicarage, Paul, Penzance, Cornwall. TR19 6UA. 0736731 261  
Rev. D.S.H. Hulme, 14 Frankland Road, Coventry, W. Midlands. CV6 7EH. 0203 686115  
Rev. Cn. J. Morris, The Master's Lodge, Archbp Holgate Hospital, Robin Lane, Heesworth. W.Yorks. WF9 4PP. 0977 610434  
Rev. B. Stevenson, The Vicarage, 138 High Street, West Malling, Kent. ME19 6ME. 0732 842245

**DIVISION 2A**

Rev. A.J. Foster, The Vicarage, Mount Pellon, Halifax. W.Yorks. HX2 0EF. 0422 65027  
Rev. F.M. Hodgess-Roper, 8 Victoria Close, Stratford-upon-Avon, Warwickshire. CV37 6RR. 0789 296603  
Rev. A.H. Hurt, St. Andrew's Parsonage, Innerleithen, Peebleshire. EH44 6HR. 0896 830447  
Rev. J. McIntyre, The Rectory, 24 Cedar Avenue, Stirling, FK8 2PD. 0786 74380  
Rev. T. Partridge, Bugbrooke Rectory, Northampton. NN7 3PB. 0604 830373

**DIVISION 2B**

Rev. G.D. Geddes, 6 Richmond Close, Elworth, Sandbach, Cheshire. CW11 9TX. 0270 767484  
Rev. M. Nicholl, 6 Randal Park, Portrush, Co. Antrim, N.Ireland. BT56 8JJ. 0265 822255  
Rev. B. Shephard, Keayn Ard, Queen's Road, Port St. Mary, I.O.M. 0624 833315  
Rev. P.T. Waterfield, 41 Harewood Crescent, North Hykeham, Lincoln. LN6 8JG. 0522 691282  
Rev. J.G. Wright, The Rectory, Grove Road, Whimple, Exeter. Devon. EX5 2TP. 0404 822521

**DIVISION 3A**

Rev. E.A. Bailey, Hill End, Sapiston, Bury St. Edmunds, Suffolk. IP31 1RR.  
Rev. W.H. Lewis 34 Albany Road Blackwood Gwent NP2 1DZ 0495 228236  
Rev. Cn. J.M. Robson, Bristows Close, Southrop, Mr. Lechdale, Gloucestershire. GL7 3QA.  
Rev. C. Millsler, 55 The Avenue, Durham. DH1 4EB. 091 386 1833  
Rev. G. Wood, The Rectory, Great Saeaton, Northallerton, DL6 2EP. 060 981 205

**DIVISION 3B**

Rev. J. Caldwell, St. Mary's Priory, Browmedge Lane, Bamber Bridge, Preston. PR5 6SP. 0772 35168  
Rev. M.P.B. Carlin, St. Chad's Vicarage, Ragpath Lane, Roseworth, Stockton-on-Tees, Cleveland. TS19 9JN. 0642 674737  
Rev. Cn. A.F. Mackenzie, Flat 3, 70 Richmond Road, Worthing, W. Sussex. BN11 4AF. 0903 39780  
Rev. D.C. Nye, St. Philip & James Vicarage, 73 Painswick Road, Cheltenham, Gloucestershire. GL50 2EX. 0242 525460  
Rev. J. Sigsworth, 136 Cottingham Road, Hull. HU6 7RY. 0482 43055

**DIVISION 3C**

Rev. P. Couch, 17 Hayfield Road, Northampton. NN3 2RE. 0604 43243  
Rev. M.E. Davies, St. Mark's Vicarage, 11 Old Mill Road, Plumstead, London. SE18 1QE. 01 854 2973  
Rev. M. Saith, 71 Winchester Road, Fordhouses, Wolverhampton. WV10 6HB. 0902 782375  
Rev. D. Sutcliffe, The Vicarage, Tomgate, Calverley, Pudsey, W.Yorks. LS28 5NF. 0532 577968  
Rev. R. Sydenham, Rose Cottage, 4 Carbes Lane, Castle Hill, Lostwithiel, Cornwall. PL22 0DF. 0208 872736

**DIVISION 3D**

Rev. H.W.R. Cullen, 9 Victoria Avenue, Sleaford, Lincs. NG34 7LN. 0529 304964  
Rev. G.J. Hutchison, 1 RTR, Tofrek Barracks, B.F.P.O. 102. 010495121869912  
Rev. A. Morris, 18 Marywell Brae, Kirriemuir, Angus.  
Rev. M.J. Williamson, St. Mary's Rectory, Dunkirk Street, Droylsden, Manchester. M35 7FB. 061 370 1569

**DIVISION 4**

Rev. Cn. L.J. Clifton Joy, 20 Victoria Drive, Leigh-on-Sea, Essex. SS9 1SF. 0702 710074  
Rev. R. Goode, Newlands, 18 Bescot Drive, Walsall, W. Midlands. WS2 9DF 0922 239266  
Rev. J. Gowing, 7 Thurne Close, Newport Pagnell, Bucks. MK16 9DY. 0708 611500  
Rev. P.R. Saith, 10 Beech Avenue, Rawmarsh, Rotherham. S. Yorks. S62 5NH.

**NON-PLAYING MEMBERS**

Rev. J.A. Bickerstaff 16 Reigate Road Brighton BN1 5AJ 0273 556879  
Rev. T.R. Fisher, 12 The Dell, Oakham, Leics. LE15 6LY. 0572 57630  
Rev. M. Joy, The Vicarage, 256 Kiberworth Road Rotherham S. Yorks. S61 1HG. 0709 557810  
Rev. W.E.A. Lockett The Croft Ruff Lane Orskirk Merseyside L39 4QZ 0695 72119  
Rev. J.S. Loxton, The Ascension Vicarage, 1 Sandy Vale, Haywards Heath, W.Sussex. RH16 4JH. 0444 450173  
Rev. C.D. Mason, 13 Kingscroft Road, London. NW2 3QE. 01 452 1913  
Rev. P. Townsend The Vicarage, Greetham, Oakham, Leics. LE15 7NF

MACKENZIE v WRIGHT (3B)

Division 3B was a bit of a disaster this year with two of the four players withdrawing. The two left were Alan Mackenzie and John Wright, and Alan has submitted this endgame with his comments. We begin at this position after Black's 34th move.



35 g4 Rb2  
 36 Ke1 f5  
 37 g5 Kf7

Starting a march to the Queen side

38 f4 Ke7  
 39 Kd1 Kd7  
 40 Rc2 Rb1+  
 41 Rc1 Rxc1+  
 42 Kxc1 b5  
 43 axb5 axb5  
 44 Kb2 Bc7  
 45 Kb3 Kc6

By this time I had begun to see possibilities of a draw. Here goes...

46 Bc3 ...

Waiting for Black's next three moves which were expected...

46 ... Kb6  
 47 Bd2 Ka6  
 48 Be1 ...

So as to shunt off after Black's next move...

48 ... Ba5  
 49 Bg3 ...

...in order to arrive at f2 after Black plays his next move.

49 ... Bd2

Not 49 Bf2 Bd2, 50 Bg1 Be1

50 Bf2 Ka5

and Black offered a draw which I accepted. White can play 51 Kc2! The only move to save the Bishop is 51...Bb4 and White goes back again with 52 Kb3 and cannot be dislodged from the squares b3 and c2.

I still consider myself lucky. If the original position had been moved one file to the right, without the pawns at h3 and h5 matters would have been very different - the position in relation to boundaries of the board on the Queen side saved me.

\*\*\* \*\*

Thanks to all of you who have submitted either games or potted biographies for this issue. The advertisers gave us the finance to print an extra four pages, but you have enabled me to fill them. However, I am always happy to receive games from you and would like to hear from more of you with biographies. please write to me before Christmas with information for the January issue of Chess Minister! - Ed.

CCCC PERCENTAGE GRADING LIST : OCTOBER 88

In the July issue of Chess Minister! we introduced the concept of an internal grading within the CCCC. The way in which this is worked out was explained in that article, but in summary it is based on our performance over the last three seasons, the most recent carrying the most weight. The list below is revised to include the 1987/88 season and is thus absolutely up to date. Where a player has not yet played three full seasons he is given a basic score for those not taken part in. Where a player has withdrawn from active participation he is given 90% of his last score for two further seasons before being deleted from the list altogether. Any grades including an interpolated score are marked below with an \*. If two players tie the most recent score takes precedence if that is different.

Inevitably in any such grading system there will be anomalies, such as relatively new players who are still working their way up through the divisions, but for most of our players it does give a reasonable measure of our relative performance. This list is basically used to determine board order in our external matches, though with a degree of flexibility to overcome obvious anomalies. It should be stressed that it is purely an internal comparison and has no relevance to any official gradings.

1	T.R. Fisher	95.00	*
2	G. Harper	90.00	
3	I.L. Davies	85.00	
4	J. Morris	80.00	
5	F.M. Hodgess Roper	70.00	
6	G.D. Geddes	70.00	
7	B. Stevenson	66.67	
8	W. Nicholl	65.83	
9	P. Waterfield	65.00	
10	A.H. Hurt	54.17	
11	D.S.H. Hulme	50.00	*
12	A.J.Foster	48.33	
13	D. Sutcliffe	47.50	
14	A.F. Mackenzie	43.33	
15	T.R. Partridge	41.67	
16=	E.A. Bailey	40.00	*
16=	J. Sigsworth	40.00	*
18	H.W.R.Cullen	38.33	
19	J.S. Loxton	38.00	*
20	W.H. Lewis	34.67	*
21	M.J. Williamson	30.84	
22	B. Shephard	30.00	*
23	W.P.B. Carlin	30.00	
24	J. McIntyre	27.50	
25	C.O. Mason	26.84	*
26	J.G. Wright	25.00	*
27	D.C. Nye	24.17	
28	R. Sydenham	22.50	*
29	J.M. Robson	20.00	
30=	N.E.Davies	20.00	*
30=	G. J. Hutchison	20.00	*
32	R. Goode	20.00	*
33	P.R. Smith	19.83	*
34	L.J. Clifton Joy	18.33	
35	J.E. Gowing	11.67	
36	J. Caldwell	10.84	
37	C. Wiltsher	9.50	*



## ACCOUNTS

Printed below are the CCCC accounts for 1987/88 as presented by our Treasurer Gordon Geddes. Our grateful thanks to him for keeping us on the 'straight and narrow' financially. A Life Membership account has been opened where money from Life Members will be kept on deposit and if we have done our sums right the interest should cover annual subs. for those who have thus enrolled.

### CLERGY CORRESPONDENCE CHESS CLUB.

Accounts, 1987/88.

#### GENERAL ACCOUNT

Balance 1.8.87	76.12
Members' subs and donations	69.80
Payment for Advertisements	5.75
Bank Interest	3.26
	<u>154.93</u>
Secretary's Expenses	61.96
Photos of Congress	10.80
Subscription to British Postal Chess Federation	10.00
Inscription on shield	2.00
Balance 31.7.88	70.17
	<u>154.93</u>

#### LIFE MEMBERSHIP ACCOUNT

10 Life Memberships @ £21 each	210.00
Balance 31.7.88	210.00

\*\*\*    \*\*\*    \*\*\*    \*\*\*    \*\*\*

#### COMPUTER CHESS NEWS SHEET

I am often being asked by members for advice on chess computers, and have to admit to not being as up to date on the subject as I once was. I was thus delighted to come across this publication during my (so far unsuccessful) attempts to persuade one of the leading retailers of chess computers to take out an advert in our magazine. It is edited by and available from Eric Hallsworth, 8 South View, Wallingford, Oxon. OX10 0HJ. It contains up to date news of what is available on the chess computer market, together with games that many of the computers have played. For anyone interested in the subject of chess computing this magazine is essential reading as it will keep you fully up to date with what is currently available. Eric Hallsworth is himself a committed Christian (though not a clergyman so not eligible for CCCC membership!), and although he works for this un-named computer retailing firm he claims his news sheet to be totally impartial. He does not charge a formal subscription but asks readers to send donations to cover its costs. If you are interested in chess computing do drop him a line at the address given above for a sample copy.

**CHESS MINISTER!**

is the magazine of the

**CLERGY CORRESPONDENCE CHESS CLUB**

Affiliated to British Postal Chess Federation

President



The Rev. Canon Ivor Davies, The Vicarage,  
Knighton, Powys. LD7 1AG. (0547) 528566.

Treasurer



The Rev. Gordon Geddes, 6 Richmond Close, Elworth,  
Sandbach, Cheshire. CW11 9TX. (0270) 767484.

Secretary (& Magazine Editor)



The Rev. Bruce Carlin, St. Chad's Vicarage,  
Ragpath Lane, Roseworth, Stockton-on-Tees,  
Cleveland. TS19 9JN. (0642) 674737.

Subscriptions : Life Membership £22.00  
Annual Membership £ 1.50

(Membership Year: October to following September)

Life Members: E.A. Bailey  
J.A. Bickerstaff  
W.P.B. Carlin  
I.Ll. Davies (Hon.)  
T.R. Fisher  
A.J. Foster  
J. Gowing  
J. Morris  
B.E. Shephard  
B. Stevenson  
C. Wiltsher