

# CHESS minister !



January 1991

Best wishes for the New Year to all our members. The January issue has been left late in the month (indeed it may be early February by the time you receive it) to improve the spacing between our three issues.

Plaques have now been sent out to all former winners of the CCCC. Thanks to those who responded with addresses for the two I could not trace. I have had letters from a number of these former winners and news of them is contained elsewhere in this issue.

Our two matches against other clubs should be drawing to a conclusion, and with only a few results outstanding the position is good. Against the SCCA (15 boards) we are leading 15.5 to 8.5, thus with only three results outstanding we cannot be caught. Well done all of you. Though it does not affect the result I would appreciate outstanding results from Hulme, Hurt, McIntyre. Against the Railways club (8 boards) we lead 8-6 with Eric Bailey's two games outstanding. We just need a draw to sew up this one, but can't do worse than tie the match anyway.

I have arranged for us to start another match in March against the Stars Barred Postal Chess Club (so named since originally they refused membership to 'star' players), and am looking for a team of around 15 boards please. IF YOU ARE WILLING TO PLAY IN THIS TEAM PLEASE LET ME KNOW BY 13TH FEBRUARY (that's Ash Wednesday, so you won't forget!).

I have had virtually no response to the suggestion of holding a Silver Jubilee residential congress. It is probably already too late to book a Retreat House for this autumn so it looks like being spring/summer 1992 IF AT ALL. Do you want me to do anything about arranging this?

David Nye spotted that in my Editorial in the October issue I demoted (in chess terms) our new member Peter Kings to Peter Knights. David suggests that if we now re-promote him it may lead to preferment in an Ecclesiastical sense!

I have 'bullied' two members of my own division into writing biographies for this issue (David Sutcliffe offered his in return for my forsaking algebraic notation in our games!), but I really could do with some more from those of you who have not yet written one. And also of course your games please... Keep them coming, annotated if possible, but we will publish some without notes. Even if I end up with too many they will get used in due course.

One or two people bought the white sweatshirts offered last year. Owing to improved equipment at the place that does them for me, these can now be printed (with our logo in the breast pocket position) in white on a black sweatshirt which you could wear with your clerical collar! £9.00 in S.M.L.XL. sizes - orders by 1st March please.

Finally, my marathon against Robin Lovelock of the Civil Service C.A. finished shortly after I sent out the last issue of Chess minister! After more than 18 months and 73 moves the result was... Yes, a DRAW! Which is exactly what we had agreed for the sake of the match 6 months and 30 moves earlier! Only this time it was irrevocably drawn and there was nothing either of us could do short of giving the game away.

DO PLEASE : volunteer for the team to play Stars Barred PCC.  
 tell me if you want a congress next year.  
 let me have outstanding results in the current matches.  
 let me have your results for CCCC 90/91 as they come.  
 send John Morris your BPCF Club Championship results.  
 send me a game or a biography.

Then there will be something for me to put in the next issue of Chess minister! - out around July.

Following his own suggestion that we print games from our top division without notes, John Morris has sent in his games against Eric Hodgess Roper. Played rapidly by phone (59 moves completed by November!) it gives our reigning champion first blood in the current season.

Morris v Hodgess Roper  
(Caro-Kann)

e4	c6	1
c4	d5	2
cxd5	cxd5	3
exd5	Qxd5	4
Nc3	Qd6	5
d4	Nf6	6
Nf3	e6	7
Bd3	Be7	8
O-O	Nc6	9
Qe2	O-O	10
Nb5	Qd8	11
Be3	Nb4	12
Bc4	b6	13
a3	Nbd5	14
Ne5	Bb7	15
Bd3	Nxe3	16
fxe3	a6	17
Nc3	b5	18
Qf2	Bd6	19
Qg3	g6	20
Be2	Ne8	21
Bf3	Bxf3	22
Qxf3	Bxe5	23
dxe5	Rc8	24
Qb7	Ra8	25
Rad1	Qb8	26
Qxb8	Rxb8	27
Ne4	Rc8	28
Rc1	Rd8	29
Rfd1	Rxd1	30
Rxd1	Nc7	31
Nf6+	Kg7	32
Rd7	Na8	33
Ne4	Nb6	34
Rb7	Nc4	35
Nc5	Re8	36
Nxa6	Nxb2	37
Rxb5	Nc4	38
a4	Ra8	39
Nc5	Nxe3	40
a5	Nc4	41
Nb3	g5	42
Rc5	Nb2	43
Kf1	Nd3	44
Rb5	Nf4	45
g3	Nd5	46
h3	Kg6	47
Rb7	g4	48
hxg4	Ne3+	49
Ke2	Nxg4	50
Rb5	Kf5	51
Nd4+	Ke4	52
Nf3	h5	53
Ng5+	Kd4	54
Nxf7	Ra7	55
Nd8	Kc4	56
Nc6	Kxb5	57
Nxa7+	Kxa5	58
Nc6+	Kb6	59

Hodgess Roper v Morris  
(English)

e5	
Nc3	d6
Nf3	f5
d4	e4
Ng5	Be7
Nd5	Na6
Nxe7	Nxe7
e3	Bd7
c5	Nb4
a3	Nbd5
Qh5+	g6
Qh6	Ng8
Qg7	Qf6
Qxf6	Ngxf6
cxd6	cxd6
Bc4	Rc8
Bb3	h6
Nh3	g5
Ng1	a5
h4	g4
Ne2	a4
Bd1	Bb5
b4	Kf7
Bb2	Rc6
Rc1	Rxc1
Bxc1	Rc8
Bb2	Kg6
Kd2	Kh7
Rh2	Bd7
Rh1	b5
Bc2	Nb6
Re1	Nc4+
Kc1	Nd5
Kb1	Ncxe3
fxe3	Nxe3
Nc3	Nxg2
Rxe4	fxe4
Bxe4+	Kg7
Bxg2	Kg6
d5	Rf8
Bc1	Kh5
Be3	g3
Kb2	Kxh4
Ne4	Bh3
Bxh3	Kxh3
Nxd6	Rf2+
Kc1	Rf3
Bd4	g2
Nxb5	Kg3
Nd6	Rf1+
Kd2	Rf2+
Kd3	g1=Q
Ne4+	Kf3
Nxf2 and resigns	

and draw agreed

# NOVAG'S 1990 SUPER COMPUTERS

Novag enter the 1990's with a brand new concept in chess computing, offering many new capabilities and expansion possibilities. The new Novag Super System enables the latest Novag Chess Computers to communicate through a low cost Super System Distributor with any personal computer with an RS232C port, with an ordinary domestic TV, (via the special Novag TV modulator) and with a new range of electronic chess boards.

Novag announce 4 new chess computers: the Super V.I.P., the Super Nova and the long awaited Super Forte 'C' and Super

Expert 'C'. All four models can be used on their own as free standing chess computers, but contain software enabling them to be connected into the Novag Super System. Each model has a brand new advanced program based on newly developed programming techniques employing "piece value tables", especially suited to today's faster microprocessor chips. All programs are held on EPROM for low cost upgrading. The new programming technique enables Novag to offer exceptional strength for money, a very full range of features and connection, via the Super System Distributor, to a whole new world.



## SUPER VIP

- 1973 USCF/159 BCF • 48K ROM with 2K RAM
- 48 levels • World's Strongest True portable

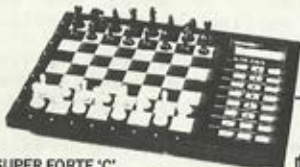
£99.99



## SUPER NOVA

- 2080 USCF/173 BCF • 32K ROM with 8K RAM
- 48 levels • Informative LCD Display

£149.99



## SUPER FORTE 'C'

- 2209 USCF/189 BCF • 96K ROM with 8K RAM
- Infinite levels • Press Sensory

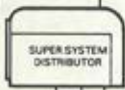
£299.99



## SUPER EXPERT 'C'

- 2209 USCF/189 BCF • 96K ROM with 8K RAM
- Infinite levels • Auto Sensory

£499.99



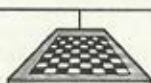
### Super System Distributor

— Provides ports, connectors and electronic processors to link up the Super System modules



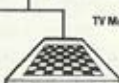
### Intelligent Sensor Board

— With piece recognition 8" x 8" board with specially encoded pieces. Beautiful for position set up and automatic verification, promotion and under promotion and the ultimate for chess enjoyment — just slide or place, the computer will do the rest!



### Full Size Tournament Board

— Luxurious wooden auto sensory board. Combine with Super VIP for home and away play or upgrade Super Nova or Super Forte 'C'. Ideal for top board at tournaments: when connected via the Super System Distributor and TV modulator to a colour TV, it will display the battle between two chess geniuses.



### Press Sensor Board

— 8" x 8" low cost chess board. For input to TV modulator or for home use with the Super VIP.



### TV Modulator

— Enables games and positions to be displayed from any of the 4 chess computers or the 3 electronic boards on a standard colour TV.



### Computer Interface

— Connects any of the four computers to ANY PC with a RS232C serial port, using standard communications software, giving you the capacity to store and print an infinite number of games, plus ALL the analysis the computer has made to arrive at its moves.



### ECA Recommended

The English Chess Association recommends the Novag Super System and its 4 associated Chess Computer Models as an ideal combination for playing practice, as well as for game archiving, analysis and chess enjoyment.

\* All ratings are quoted from the authoritative Chess Computer Reports Quarterly produced and edited in the United States by Larry Kaufmann I.M.

### FOR MORE INFORMATION

Ring 0273 202016/7 now for free comprehensive reports, games and comments by GM Raymond Keene and advice on which Novag computer would best suit your strength and requirements.

SEE THE COMPLETE RANGE OF NOVAG COMPUTERS AT: Our Brighton Showroom in Castle Street, (Turn off the seafront into Preston Street, just by the West Pier. Castle Street is the third on the right off Preston Street). Tel: 0273 202016/7.

The London Chess Centre, Granada Social Club, 58 St Johns Hill, Clapham Junction, London. (Open 2 p.m. to 9 p.m. Monday to Friday, Noon to 6 p.m. Saturday). Tel: 071 978 5160.

Virgin Games Centre, 100 Oxford Street, London. And other high quality retail outlets.

### ACCESSORY PRICE TABLE

Super Forte/Expert Upgrades	A-C	£89.99
	B-C	£59.99
Mains adaptor for Super Forte/Expert		£9.99
Universal Mains adaptor		£7.99
Novag Chess printer		£99.99
Novag SSD incl. Computer interface		£29.99
Tournament Sensory board		T.B.A.
Press Sensory Board		T.B.A.
Intelligent Board		T.B.A.
T.V. Modulator		T.B.A.

# Eureka Electronics Ltd

26 Castle Street, Brighton BN1 2HD

☎ 0273 202016/7

## GETTING TO KNOW YOU

### MICHAEL THISTLEWOOD (Div. 3A):

I was born at an early age on the borders of Northumberland and Cumberland where my father was Vicar. After a traditional education of classics and theology I went to Lincoln Theological College under Oliver Tomkins. My ministry was divided almost equally between parish work and teaching R.E. in state schools. High blood pressure led to an early bath and I retired in 1988.

My chess goes back a long way (I think my father must have taught me) and I played at school and then dabbled on and off over the years. I renewed my interest just before retirement and after retirement decided to join the local club just to find out where I stood in the chess world. I soon found out!! So I have really taken my game to bits and read a lot and learned a lot, but my goodness it is so difficult to win! It does happen occasionally and on the whole I can give people a reasonable game.

I still keep my clerical hand in and also sing in the Bach Choir and research family history.

### DAVID SUTCLIFFE (Div. 3A):

I have belonged to the Club for a quarter of a century and had my ups and downs. Many of my games have been lost through stupidity. For a long time I used to have a pocket set in the loo and reckoned that most of my best 'moves' were made in there. We had a guy living with us at the time and he asked me what would happen if he moved one of the pieces. "I should know immediately," I replied airily. He tried it. I lost a rook - and the game!

Born in Manchester, I was a librarian before ordination. After spells in the Lichfield and Manchester dioceses, we have been in the Bradford area since 1965 and plan to remain in these parts after retirement. My 'Sell by' or 'Best before' date is only a matter of three or four years away and then I shall have time to take membership of the Club more seriously. My wife is a Probation Officer and we have two sons. One a priest in Coventry diocese, part-time Team Vicar and p.t. Religious Affairs Producer for a BBC local radio station. The other is an investigator for the Local Government Ombudsman in Ork.

I have spent all my ministry (apart from a few years full time teaching) in parish work and my only claim to fame is the possession of a massive collection of elephants. I adore the animals and people give me these elephants at the drop of a hat. What I shall do with them all when I retire, I know not!

DAVID NYE (Div. 3B) writes: Tim Partidge and I have agreed to play a third game this season. As well as the two league matches we are now applying equal care and ingenuity not against each other but in collusion, seeing how often we can re-use a window envelope. The envelope in question is distinctive because it carries a motif of a large H on the top left corner with 'Heygates' and 'quality tells' written within it. We are careful not to lose this as we remove and re-fix our assortment of sticky paper to carry the new stamp each time. Tim has suggested we ask if there can be a separate championship for this, each pair playing against each other pair in the club. We realize that by the time this is published it will be too late this season for any other pair to get near us...our Heygates envelope has already made thirty four journeys and is still going strong!

Note from the Secretary: I am happy for such a championship to run unofficially and will keep the record updated in Chess minister! if others let me know. However, while the re-use of envelopes is a laudable economy and commendably 'green', I am advised by the Post Office that if either player has a sorting office that prints those little phosphor dots on the envelope these should be covered up as well since they contain the postcode in computer readable form. If these are left on your envelope, then it may well go astray!

NEWS FROM FORMER MEMBERS

Sending out the winners plaques to some of our former winners who are no longer in the club has resulted in a bit of news from some of them which I am sure long standing members of the club will appreciate hearing:

GRAHAM JOHNSON (The Rectory, Golding Close, Daventry, NN11 5PN - Winner in 1975/6/7) says he still hears about the club from Tim Partridge who is in the same Deanery. He says however he finds no time to play chess at the moment and has even resigned from his local chess club. He has however renewed membership of the club as a non-league member so as to keep in touch and hopes he may return to playing at some time in the future.

ALAN THOMAS (The Rectory, Church Lane, Hutton, Weston-Super-Mare, BS24 9SL - Winner 1981/2) left the club as winner on changing parishes in 1982. He now feels able to rejoin, but was too late for the current season. We will include him in 1991/2 but in the meantime perhaps someone would like to challenge him to a friendly game or two to esse him back gently!

VERE DUCKER (one of the four winners in 1979 - Paddock Corner, Farnham Lane, Haslemere, Surrey, GU27 1HB) left the club in 1981 just before his wife died, and has hardly played OTB chess either since then. He has been travelling extensively in his retirement partly visiting his children, two of whom live in New Zealand and USA. Vere is now 86 but gets about with difficulty having had a hip operation and more recently lost a chip of bone from his hip. He also now has cataracts in both eyes. He keeps his chess hand in with the 'Winning Move' problem in The Times and says he rarely fails to find it in a minute or two, so he hasn't entirely lost his touch. He remembers those he played against, and he lives near Reg Marcus, though he did not know until receiving our magazine that he played chess. He hopes they may get together. Last summer Vere was honoured to be invited to preach at the Royal Regatta Service in Henley Parish Church.

MICHAEL WENTWORTH (Winner 1978/9 - Holy Spirit Church, Fernhurst, Halton Brook, Runcorn, WA7 2NJ) is indeed our sole R.C. winner to date. He says his last season with our club was also his last year with chess at all. He writes 'I have developed a huge block about the whole business. Does it have to do with defeat? I have not looked at a chess board since, nor a chess book, not even columns in the Guardian. It is a terrible state to have got into! But this communication awakens old feelings. Who knows? I might start again.'

Finally, not exactly news of a former member of our club, but one who could have been if we had been going that long ago! John Gowing sends me an extract from 'Yes Lord, I believe' by Dom Edmund Jones: "When someone asked ST. CHARLES BORROMEO what he would do if, when he were playing a game of chess, he learned that the world would come to an end in five minutes (expecting the answer that he would get down on his knees and pray), the answer he gave was that he would finish the game of chess. 'Sub specie aeternitatis'. If he was right to be doing it at all, there would be nothing wrong if that was what the Lord found him doing when he came."

If the club feels in need of a Patron Saint, perhaps St. Charles would be a suitable candidate. There isn't a patron saint of chess players listed in the index to Michael Walsh's 'Butler's Lives of Patron Saints' which seems surprising since there is one for practically everyone else. The chessily famous Spanish priest Ruy Lopez might be another candidate but the church has not recognized his spiritual merits to the extent of canonization! I suspect many of us could do with someone in the heavenly company to intercede for us at times...

## SMITH v GIBBS (BCCA)

Mike Smith has sent this game, with his own notes, from our foray into the BPCF Club Championship. Mike was our Board 6, and was paired with a member of the BCCA.

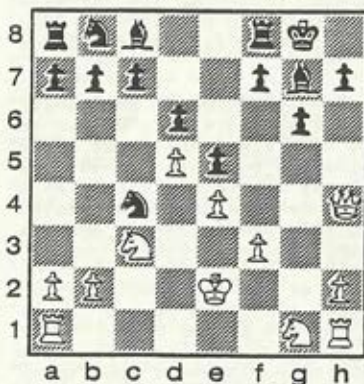
- |    |     |     |
|----|-----|-----|
| 1. | d4  | Nf6 |
| 2. | c4  | g6  |
| 3. | Nc3 | Bg7 |
| 4. | e4  | d6  |
| 5. | f3  | ... |

I have often had good results with this for white.

- |    |     |      |
|----|-----|------|
| 5. | ... | O-O  |
| 6. | Be3 | e5   |
| 7. | d5  | Nh5  |
| 8. | Qd2 | Qh4+ |

Intending an interesting, but doubtful, queen sacrifice.

- |     |      |      |
|-----|------|------|
| 9.  | g3   | Nxg3 |
| 10. | Qf2  | Nxf1 |
| 11. | Qxh4 | Nxe3 |
| 12. | Ke2  | Nxc4 |



With two bishops and two pawns for his queen, black needs to mobilise his pieces and keep white's queen quiet.

- |     |    |     |
|-----|----|-----|
| 13. | b3 | Na3 |
|-----|----|-----|

Otherwise 14. Nb5 is awkward.

- |     |      |      |
|-----|------|------|
| 14. | Rc1  | Na6  |
| 15. | Nh3  | Bd7  |
| 16. | Nf2  | Rae8 |
| 17. | Nd3  | f5   |
| 18. | Rhf1 | Nc5  |

- |     |      |      |
|-----|------|------|
| 19. | Nxc5 | dxc5 |
| 20. | Rf2  | Rf7  |
| 21. | exf5 | gxf5 |

A decisive mistake. Rf5 was essential.

- |     |      |     |
|-----|------|-----|
| 22. | Rg2  | Kh8 |
| 23. | Reg1 | ... |

Intending 24. Rxc7, Rxc7; 25 Qf6 tying black in knots.

- |     |     |     |
|-----|-----|-----|
| 23. | ... | Bf6 |
| 24. | Qh5 | ... |

Black loses wherever the Rook goes.

- |     |     |          |
|-----|-----|----------|
| 24. | ... | R(f7)f8  |
| 25. | Qh6 | Rf7      |
| 26. | Rg6 | resigns. |

## CARLIN v THOMAS (SCCA)

To fill the page I give the score without notes of my own game 1 against Thomas of the SCCA in our recent match. At one point I thought that at last I was going to find out whether exchanging a N&B for R&P is sound, but not long afterwards he kindly gave me back the Rook for free!

- |     |       |         |
|-----|-------|---------|
| 1.  | e4    | e6      |
| 2.  | d4    | d5      |
| 3.  | e5    | e5      |
| 4.  | c3    | Nc6     |
| 5.  | Nf3   | Qb6     |
| 6.  | a3    | c4      |
| 7.  | g3    | f6      |
| 8.  | exf6  | Nxf6    |
| 9.  | Bh3   | Bd6     |
| 10. | Ng5   | Bd7     |
| 11. | Bxe6  | O-O-O   |
| 12. | Nf7   | Bxe6    |
| 13. | Nxh8  | Rxh8    |
| 14. | O-O   | Bh3     |
| 15. | Re1   | Qc7     |
| 16. | Bg5   | Ne4     |
| 17. | Qh5   | Be6     |
| 18. | Nd2   | Nxg3    |
| 19. | hxg3  | Bxg3    |
| 20. | fxg3  | Qxg3+   |
| 21. | Kh1   | Bh3     |
| 22. | Rg1   | Qd3     |
| 23. | Rae1  | Rf8     |
| 24. | Re8+  | Rxe8    |
| 25. | Qxe8+ | Kc7     |
| 26. | Qf7+  | Kb6     |
| 27. | Qf3   | resigns |

# CLAIM YOUR FREE BOOK

when you buy our unique *LEGENDS OF CHESS* collection!

## Tal the Magnificent by GM Andrew Soltis

Tal's 30 best games plus biography, the road to the title and life after the World Championship. With a diagram every 3 moves, the games are easily followed without a set!

pub. 1990 softback,  
202 pages, algebraic .  
£10.70

## Pillsbury the Extraordinary by GM Andrew Soltis

Pillsbury's brief career saw him rise from obscurity to beat the world's best only to die eleven years later. His biography and best games are found in this, the only English language work on the American

pub. 1990, softback,  
142 pages, algebraic.  
£9.95

## Petrosian the Powerful by GM Andrew Soltis

Biography and 30 of the best games played by one of the World's most profound and enigmatic players. Currently the only book in English on the "Armenian Nimzovich".

pub. 1990, softback,  
158 pages, algebraic .  
£9.95

*FREE when you buy this classic collection!*

## LEONID STEIN - MASTER OF ATTACK.

by GM Ray Koene

Keene's much acclaimed memorial to a great Master who was his personal friend. Stein won 3 out of 4 USSR Championships between 1963 and 1966, scored overwhelming victories against the world's leading players and won two of the strongest tournaments of all time in Moscow 1967 & 1971. A biography, the best games and the best miniatures played by this stylish, attacking player.

pub. 1988, softback, 160 pages, algebraic notation.

was £9.95 now **ABSOLUTELY FREE!**

### ORDER FORM

PLEASE COMPLETE IN BLOCK CAPITALS

Send to : BRIAN ELEY & CO. Dearn Road, Bolton-on-Dearne, Rotherham. S63 8JR

Credit card orders may be placed by phone on 0709 873653 (24 hour service) for immediate attention.

Name \_\_\_\_\_

Address \_\_\_\_\_

Postcode \_\_\_\_\_

I enclose cheque/postal order for £ 30.60

Please charge my Access/Visa/American Express/Diners Club card. (Delete as appropriate)

Card number \_\_\_\_\_ Expiry date \_\_\_\_\_

Signature:

**Remember... this offer will end as soon as our limited stocks are sold.**

**Don't miss out! Place your order now!**



## FINANCIAL STATEMENT

Gordon Geddes has sent a statement of our accounts as at 31st July 1990 (it missed the last issue with Gordon having just moved house).

Ordinary account	3.88
Deposit account	129.36
* Investment account	315.90

\* The Investment account is Life Membership subscriptions, the capital of which we should try not to use.

### STATIONS of THE CROSS



compiled by  
BRUCE CARLIN  
with a foreword by  
BISHOP DAVID HOPE  
\*  
ADDITIONAL CURATES  
SOCIETY

This A.C.S. publication provides a fresh approach to the Stations of the Cross

There is a wide selection of hymns with suggested tunes

Copies available at £2.50  
40p P&P per copy  
(10% discount for 12 or more copies)

A set of Stations to match the book, printed in purple ink on firm card (A4) at £15 for a set of 15.  
£1.20 P&P per set

**ADDITIONAL CURATES SOCIETY**  
264a Washwood Heath Road, Birmingham B8 2XS  
Tel:021-328-0749 Fax:021-327-7951

BOOK also available direct from Bruce Carlin, St. Chad's Vicarage, Ragpath Lane, Roseworth, Stockton-on-Tees. Cleveland. TS19 9JN.  
£2.50 post free (10% discount on 10 or more).

# CHESSE MINISTER!

is the magazine of the

## CLERGY CORRESPONDENCE CHESS CLUB

Affiliated to British Postal Chess Federation

### President

The Rev. Cn. Ivor Davies, Holly Cottage,  
5 The Cwm, Knighton, Powys. LD7 1HF. (0547) 520253.

### Treasurer

The Rev. Gordon Geddes, The Vicarage,  
Minshull Vernon, Crewe. CW1 4RD. (0270 71) 213.

### Secretary (& Magazine Editor)

The Rev. Bruce Carlin, St. Chad's Vicarage,  
Ragpath Lane, Roseworth, Stockton-on-Tees,  
Cleveland. TS19 9JN. (0642) 674737.

Subscriptions :	Life Membership	£24.00
	Annual Membership	£ 2.00

(Membership Year: October to following September)

### Life Members:

E.A. Bailey	G. Harper
J.A. Bickerstaff	D.S.H. Hulme
W.P.B. Carlin	J.R. Morris
L.J. Clifton Joy	D.C. Nye
I.Ll. Davies (Hon).	B.E. Shephard
N.E. Davies	M. Smith
T.R. Fisher	B. Stevenson
A.J. Foster	M.J. Williamson
J. Gowing	C. Wiltsher