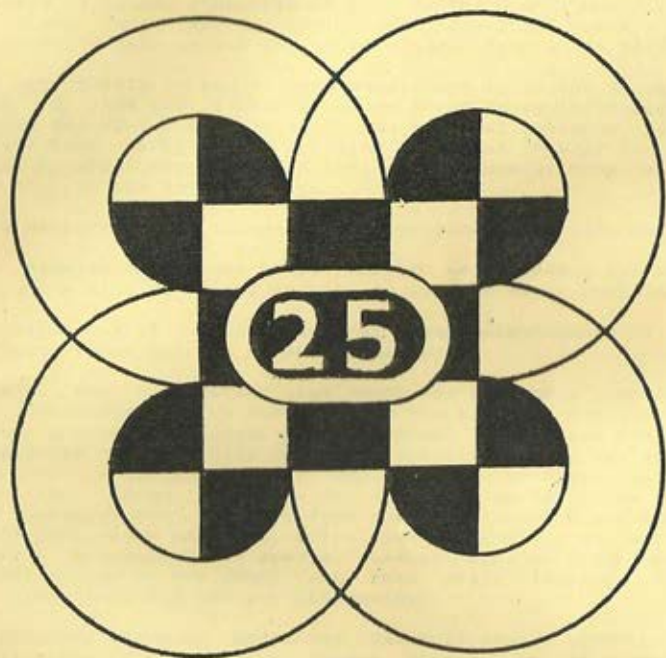


**CHESS minister !**

**February 1992**



**CLERGY  
CORRESPONDENCE  
CHESS CLUB  
SILVER JUBILEE**

Well, I took a gamble and it didn't work...

Making last October's issue four pages larger than usual used up my stock of games, apart from the two that appear in this issue. The gamble was that you would send me more to fill this issue. That you didn't is shown by this issue being four pages smaller than usual! Please send me games, annotated or not, by the end of May for the June issue. Also, those who haven't sent a few lines about themselves, please do so to help us all get to know each other a bit better.

Another opportunity to get to know each other is at our Silver Jubilee Congress. I have provisionally booked Ecton House (near Northampton) once again for 22nd - 25th June. It was an ideal location last time, and I have been unable to get anywhere better or cheaper for this one. Cost will be about £70-£75 which includes all meals. More details and a reply slip on the loose insert.

New Life Member: Justin Caldwell has subscribed as a Life Member.

I have delayed this issue until February as it spaces out our issues better, and avoids me having to prepare it just after Christmas.

On the basis that if one asks, several others might want to know, I answer below three queries raised by members:

**SCORECARDS:** You will notice that there are now three time columns on current scorecards. 'R' is for the date the move is received; 'S' for the date the reply is sent; the new column 'T' enables you to record the cumulative total of time used thus enabling you to see at a glance whether you or your opponent are in danger of overstepping a time control. Time allowed is 20 days for each 10 moves. Time saved is carried forward and 14 days time out is allowed in any game, after first notifying your opponent. Extra time out can be allowed at the Secretary's discretion for special reasons. Days on which there is no postal collection do not count (and this still includes Sunday as Sunday collections are not yet nationwide).

**NEW DIVISIONS:** Someone commented that this year's Division 2A looks rather stronger than 2B. With 3 former winners in 2A and a total internal grading of 46 against 74, on the face of it this does appear to be the case, but past form is not always a pointer. I have a skeleton structure of new divisions which are formed according to players' positions in the previous season. This is adhered to unless a withdrawal forces me to shuffle things about a bit (and often 3rd divisions need a bit of shuffling to spread new members). I felt this was the fairest way to do this, avoiding any suggestion of favouritism in placing people in their divisions. However, it may be that while keeping promotion and relegation rules the same, a bit of seeding could be used within the divisions to even them out according to players' internal gradings. Let me know if you have any views on this.

**VOIDS:** As explained a few years ago if any player drops out during the season, ALL his games are declared void, even if some were completed. People who have already won against such players may feel aggrieved that they get no points, but it is the same for everyone, and avoids the alternative unfairness of someone who has already lost finding the others in his division given wins because a player withdraws. If anyone can offer a fairer solution I am always open to hear it.

Enjoy this magazine, small though it is. Let me have some material for the next issue, and let me know your results as you complete your games.

M. Maanon v J. Wright  
BPCF Open Championship P.228

John Wright has sent in this game with his annotations and his own diagrams, from a game he played in a BPCF Open Championship group. Members of CCCC are welcome to enter these championships as we are an affiliated club. Preliminary rounds start whenever there are 7 players entered. Details from A.M. Anderson, 3 Winterfield Gardens, Duns, Berwickshire. TD11 3EZ.

1	e4	e5
2	Nf3	Nc6
3	Bc4	Nf6
4	Ng5	Bc5

Black's move introduces the Wilkes-Barre variation of the Two Knights.

5	Nxf7	Bxf2+
6	Kxf2	Nxe4+
7	Ke3	...

More usual is 7 Kg1 Qh4.

7	...	Qh4
8	g3	Nxg3
9	hxg3	Qd4+



10	Kf3	d5
11	Rh4	...

NOT, of course 11 Nxh8 because of 11...Bg4.

11	...	e4+
12	Kg2	O-O

13	Qh5	Rxf7
14	Rf4	...

14 Qh7+ Kf8; 15 Qh8 Ke7;  
16 Rf4 seems more natural and better.

14	...	Be6
15	Bb3	Raf8



16	Rxf7	...
----	------	-----

White's fatal mistake: much better would have been 16 Nc3. After 16...Rf4; 17 gxf4 g6; 18 Qh4 white still has a chance.

16	...	Rxf7
17	Qe2	Qf6
18	c3	...

To prevent 18...Nd4.

18	...	Ne5
19	Bd1	Bg4
20	Qe1	Bxd1
21	d4	Nd3
22	Qxd1	Qf2+

White resigns.

White cannot prevent 23...Rf3 after which 24 Kh3 and he must play Qxf3 to avoid mate; or 24 Kh1 and he is mated in two or three moves.

MORE GAMES (annotated or not) ARE URGENTLY REQUIRED PLEASE. I have none at all left for the next issue of CHESS minister!



"WHOSE KING FOR THE VICE?"

Mackenzie v Kings  
1990/91 Division 3B

Alan Mackenzie and Peter Kings have both provided notes on this game, distinguished by their initials. The title is Peter's. Alan originally suggesting from his point of view, 'How to loose a game'

They only regarded the beginning and end of the game to be of interest, so moves from 13 to 29 were not submitted. Those who enjoy puzzles could try working out what happened in this intermediate stage of the game to reach the position shown!

(Apologies if I have misread any of the handwriting - Ed.)

1	Nf3	g6
2	g3	Bg7
3	Bg2	e5
4	d3	Ne7
5	e4	Nbc6
6	Nc3	d6
7	O-O	O-O
8	Be3	Nd4
9	Qd2	Bh3

A.M.: White appears to be in trouble, but...

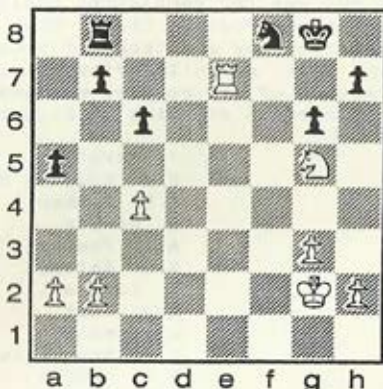
10	Nxd4	Bxg2
11	Ne6	fxe6

F.K.: if 11...Qc8, then not 12 Nxf8? for 12...Bf3 kills.

12	Kxg2	d5
----	------	----



And so the game continued until, after Black's 29th move the position was...



30	Ne4	a4
31	Nf6+	Kh8
32	Rc7	b5
33	c5	Rd8
34	Kh3	
35	Rxc6	Rxb2
36	Rc8?	...

A.M.: This probably lost me the game. The King gets out of the vice. The obvious was 36 Rc7, but it is dodgy as a2 is en prise.

36	...	
37	Ne8+	Kh6
38	Nd6	Ne6
39	c6	Ng5+
40	Kh4	Rxh2+
41	Kg4	Rxa2
42	Nxb5	Rb2
43	Nd4	Rb4
44	Rd8	Rc4!

P.K.: If 44...Ne6 then 45 Kh3! and either capture (d8 or d4) is met by 46 c7. Black seems to have nothing better than 45...Nf7.

45	c7	...
----	----	-----

A.M.: A stupid move?

45	...	Rxc7
46	Rd5	Rc4
47	Kh4	Rxd4+

White resigns

A.M.: Perhaps I should have tried getting my King to h6 earlier on while the 'vice' held.

MATCH NEWS

Though not due for completion until 31st March, our match against the Stars Barred Postal Chess Club is more or less finished. The only games outstanding are those of Arnould Hurt (who lost contact with his opponent for a while after the scorecard got lost in the post), but irrespective of his results we have conclusively won the match, the score at present standing at 20.5 to 7.5. Individual results are:

J. Morris	W W
F.M. Hodgess Roper	W W
T.R. Fisher	W W
G. Harper	L D
A.J. Foster	D L
E.A. Bailey	W W
J. Caldwell	L W
A.H. Hurt	- -
A. Norris	W D
A.F. Mackenzie	W W
N.E. Davies	L W
W.H. Lewis	D D
W.P.B. Carlin	W L
J.S. Loxton	W W
J. Gowing	W W

Less successful was our performance in the 1990/91 BPCF Club Championship where we finished 8th. Provisional results (pending an appeal against an adjudication, which could affect 1st & 2nd places):

1. IPSWICH CHESS CLUB	13
2. POSTAL CHESS CLUB	12.5
3. BRITISH CORRESPONDENCE CHESS ASSOCIATION	12.5
4. CIVIL SERVICE CHESS ASSOCIATION	12
5. NORTHERN IRELAND POSTAL CHESS ASSOCIATION	11
6. BRITISH CORRESPONDENCE CHESS SOCIETY	10.5
7. NATIONAL CORRESPONDENCE CHESS CLUB	8.5
8. CLERGY CORRESPONDENCE CHESS CLUB	7.5
9. SOCIAL CORRESPONDENCE CHESS ASSOCIATION	6.5
10. STARS BARRED POSTAL CHESS CLUB	6

Our team (and their results) was:

T.R. Fisher	W W
J.R. Morris	L L
F.M. Hodgess Roper	D L
D.S.H. Hulme	L L
M. Smith	L D
I.Ll. Davies	W L
G. Harper	D W
J.G. Wright	L L
J. Caldwell	W D
A.J. Foster	L D

We have entered a team again this year, competing against 6 other clubs for the championship. It would be easy to conclude that we just don't have a strong enough team available for this level of chess, but perhaps we should instead take notice of the fact that Ipswich, who are provisional winners this year (and certainly at least runners up), were in fact dead last the previous year. So there is hope for us yet!

I hope we can start a new friendly match against another club in March, with a team of around 15 once again. If you are willing to be in such a team, please let me know by the end of February.



# The Choice of the Champions



## This program has it all

ChessBase is the first professional chess database to run on personal computers. It is currently used by almost all of the top players in the world. ChessBase helps you keep abreast with current theory to find new ideas, classify and evaluate new openings, and analyse the style of potential opponents. With this program you spend more time actually studying material rather than just searching for it.

**ChessBase is compatible:** It will run on any IBM/compatible or any Atari ST, with any monitor – colour, mono, LCD or plasma.

**ATTENTION AMIGA AND MACINTOSH OWNERS! CHESS DATABASES NOW AVAILABLE!**

**ChessBase is portable:** Use it on a laptop computer.

**ChessBase is helpful:** Just press a special help key and you will get instructions on the functions available in that particular situation.

**ChessBase is spectacular:** Superb chessboard graphics in colour with 3-D buttons and gliding pieces – for hours of pleasure without strain!

**ChessBase is fast!** Depending on the key and the computer you are using it will automatically classify up to 500,000 games per hour.

### ChessBase has many useful functions:

- Intelligent move entry allows you to input most moves with a single click of the mouse.
- Games can be shown in regular chess notation with different levels of variation in different colours. Click a move and the position appears on the screen. Double-click to transfer the position to the main board.
- "Statistics" gives you an instant graphic evaluation of openings variations or performance.
- Moves can be displayed in the games list, with a "default move" set to the critical point. Catch the most important variations at a glance!
- Just click "Compare" and ChessBase will list the most similar games – an instant novelty finder!

ChessBase is regularly improved and updated. The latest Version 3.0 has many breathtaking new features that make it even more versatile.



**New openings key structure:** There are no limitations to the number of games in a database or an openings variation. Keys can be deleted, exported or merged.

**Automatic refinement of openings.** ChessBase will search for overcrowded variations and refine them on the basis of the games found.

**Players key:** Games may be classified according to players (white or black), tournament, year, and annotator and retrieved instantaneously.

**Middle and endgame classification** (optional ChessBase utilities). Search for positions, material, manoeuvres, open files, pawn structures, mobility space and development advantage – anything you can define.

### Choose the right package for you

- **Demo Disc just £4.00** Includes 140 interesting games (FREE to BCF Direct Members).
- **Chessbase Starter £24.95** Allows game storage and replay Includes 800 (ATARI) interesting games (360 IBM).
- **Professional package £179** for CB 3.0 plus openings key, historic database of 800 World Ch games and database of 5,000 games.
- **Master Package £259.95** – as above plus Informator key and database of 15,000 games.
- **Professional Publisher £229.95** – as Professional Package plus DTP utility.
- **Super Publisher £399.95** – as Professional Package plus Ventura utilities.
- **50+ Openings Discs, 150 Tournament Discs.**
- **ChessBase Magazine:** 6000 games/yr, 2000+ annotated by GMs, £74.50
- **Middlegame Key £25.95. Endgame £35.95.**

Orders and inquiries to IM Malcolm Pein:

**CBSoftware**

Chess Database and Chess Software Specialists.

Visa/Access welcome. Visitors welcome by appointment.  
CB Software, 37 Marsh Lane, London NW7 4QJ  
Tel: 081 959 0670 Fax: 081-906 8771

# M-CHESS – IT'S STRONG

M-Chess is a fantastic new chess program of the finest calibre,  
which runs on IBM compatible computers

## M-CHESS FEATURES:

- Elegant colour graphics
- Mouse support for moving the chess pieces
- Take-back and replay of any or all moves
- Many levels including "Active Chess"
- Strong opening book (selectable)
- Thinks on your time (selectable)
- Display of evaluation and analysis
- Quick set-up of any position
- Saves games or positions to disk
- Prints game listings in an easy-to-read format
- Unique, advanced repertoire of endgame theory.

## M-CHESS FACTS

- Plays by the official laws of chess
- Plays strong openings when "Out of book"
- Considers many tactical and positional features when selecting its moves
- Plays smart endgames.
- **M-Chess recognizes and understands:**
- Lucena and Philidor positions in Rook-and-Pawn endgames
- The Square-of-the-Pawn and its implications
- Material needed to effect checkmate
- Checkmate with Knight and Bishop
- Obtaining and avoiding stalemate
- Positions with King and Pawn(s) versus King
- Queen versus Pawn-on-the-seventh rank.

**M-Chess £79.00**

## M-CHESS PERFORMANCE

Based on 100's of games against rated opponents, estimated ratings are

CPU	Clock Speed	M-Chess estimated rating (BCF)
Intel 80286	12MHz	204 (2230 ELO)
Intel 80386	25MHz	208 (2266 ELO)
Intel 80486	33MHz	210 (2286 ELO)

There's only one thing stronger than M-Chess, the Chess Machine, rated 2350+ (219). The Chess Machine was outright computer champion at Vancouver and costs £499. Call for more info, and sample games.

## M-CHESS TOURNAMENT RECORDS

Dutch Open, Dieren, 1990. 7.5/10 (+5, -0, =5). 25 MHz 80486. Vienna Open, 1990, 5.5/9 (+4, -2, =3). 25 MHz 80486. ACM Computer, New York, 1990, 3.5/5 (+3, -1, =1). Tied for 3rd place with Hitech. 25 MHz 80386 (rounds 1-2); 33 MHz 80486 (rounds 3-5). World Microcomputer Chess Championship, Vancouver, 1991. Finished in 2nd place with 5.5/7 (+5, -1, =1). Won the title of 1991 World Personal Computer Chess Champion. 33 MHz 80486. Eighth AEGON Man/Computer tournament, The Hague, 1991. First place computer with 4/6 (+4, -2, =0). 25 MHz 80486. Including a win over GM Larry Christiansen for a 2439 performance.

VISA/ACCESS welcome.

CB Software, 37 Marsh Lane, London NW7 4QJ

Visitors welcome by appointment.

Tel. 081 959 0670

FAX: 081-906 8771

Announcing a New Era in Microcomputer Chess

# The Chess Machine<sup>®</sup>

## 1991 Absolute World Microcomputer Chess Champion

At the 1991 World Microcomputer Championship in Vancouver, B.C., Canada, the **ChessMachine**, a new concept in microcomputer chess, running on a 32-bit RISC processor, finished clear first ahead of seven-time champion Mephisto.

The **ChessMachine** is a combination of hardware and software for your MS-DOS computer (XT and AT). The plug-in card contains an RISC (Reduced Instruction Set Chip) processor and is mounted with 128kb or 512kb of RAM. Its effective speed, 12 MIPS, is 4 times faster than a 33MHz 386-based PC. It combines the strength of a stand-alone chess computer with the storage and printing capabilities of your personal computer system.

Now you can play against the World Champion, day or night.

### Features:

- Save and print all your games and diagrams.
- Large, user-adaptable opening library, make TCM play your openings.
- Game collection from recent major tournaments.
- In-depth analysis displayed on screen by the World Champion.
- Chess Tutorial by Dutch national coach van Wijgerden.
- Free software upgrades for one year, 12-month warranty and telephone support.

Orders and inquiries to:

**CBSoftware**

Price: 128kb **ChessMachine** £399

512kb **ChessMachine** £499

Chess Database and Chess Software Specialists.

VISA/ACCESS welcome.

CB Software, 37 Marsh Lane, London NW7 4QJ

Visitors welcome by appointment.

Tel. 081 959 0670

Fax: 081-906 8771



SILVER JUBILEE CONGRESS

A number of you have requested that we hold another Residential Congress to celebrate our Silver Jubilee. I have therefore made a provisional booking at Ecton House, near Northampton for 22nd-25th June 1992. This was found to be an excellent venue last time both because the house offered suitable accommodation for playing chess, and because it is situated more or less at the centre of England so reasonably accessible to all our members. The congress would run from Monday tea time to Thursday lunchtime as last time, and the cost will be £70-£75 (rumours of a possible VAT increase?), including full board.

In order to confirm our booking I need you to respond more firmly now if you wish to come, so request that you send back to me the booking slip at the bottom of this sheet together with a deposit of £10, which is not refundable (unless the congress does not happen). I suspect it will be easier if I organize the finances personally rather than through the CCCC account so please make cheques payable to me. I will not bank any cheques until the end of February when I should know if it is viable or not.

We need at least 10 participants to make the congress viable, and at least 15 to ensure that we have exclusive use of the house. If we have less than this they may book in another group at the same time and this would compromise our use of the house's facilities.

Wives are most welcome to accompany club members if they wish to. The cost is the same as they still need the same accommodation and board.

PLEASE SEND THIS BOOKING FORM BY THE END OF FEBRUARY SO AS I CAN CONFIRM OUR BOOKING WITH ECTON HOUSE.

=====  
Send to Bruce Carlin, St. Chad's Vicarage, Ragpath Lane, Roseworth, Stockton-on-Tees. Cleveland. TS19 9JN.

YOUR NAME:

Please book me ..... place(s) for our Silver Jubilee Congress from June 22nd-25th 1992.

I enclose a cheque for £10 for each place booked.

(cheques payable to Rev. W.P.B.Carlin)

Please also send me an s.a.e. so that I can confirm that we are going ahead or return your cheque if it is not viable!



# CHESS minister !

the magazine of the



C LERGY C O R R E S P O N D E N C E C H E S S C L U B

Affiliated to British Postal Chess Federation

## President

The Revd. Canon Ivor Davies  
Holly Cottage, 5 The Cwm, Knighton, Powys. LD7 1HF.  
(0547) 520253.

## Treasurer

The Revd. Gordon Geddes  
The Vicarage, Minshull Vernon, Crewe. CW1 4RD.  
(0270 71) 213.

## Secretary (& Magazine Editor)

The Revd. Bruce Carlin,  
St. Chad's Vicarage, Ragpath Lane, Stockton-on-Tees,  
Cleveland. TS19 9JN. (0642) 674737.

## Life Members

E.A.Bailey  
W.P.B.Carlin  
N.E.Davies  
J.Gowing  
J.R.Morris  
M.Smith

J.A.Bickerstaff  
L.J.Clifton Joy  
T.R.Fisher  
G.Harper  
D.C.Nye  
B.Stevenson

J.Caldwell  
I.Ll.Davies  
A.J.Foster  
D.S.H.Hulme  
B.E.Shephard  
M.J.Williamson

## Subscriptions

Life Membership £25.00  
Annual Membership £ 2.50

(Membership Year: October to September)