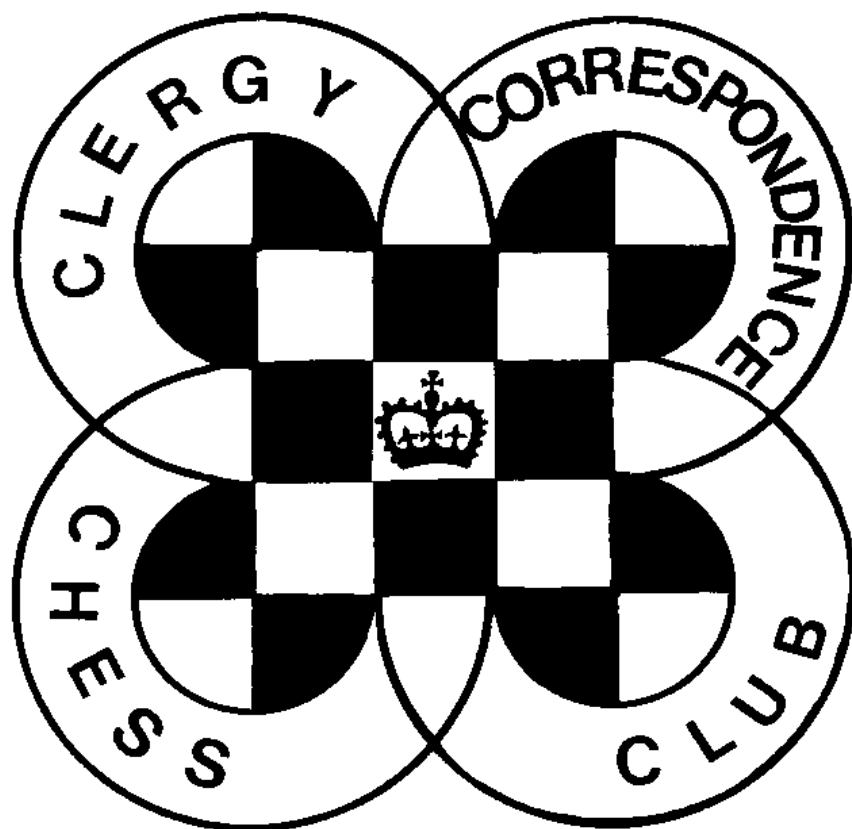
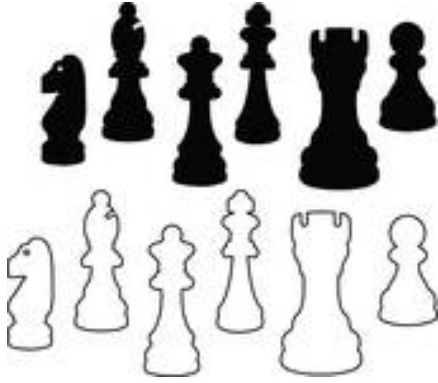


# **CHESS minister !**

**June 2023**



**CLERGY CORRESPONDENCE CHESS CLUB**



# **CHESS Minister!**

## **June 2023**

### **END OF SEASON**

The current season finishes on 31<sup>st</sup> July. Please ensure that all results are notified by that date. Failure to do this may result in games being scored as a loss to both players. Unfinished games can be submitted for adjudication if necessary and details of how to do this are available from the Secretary.

### **ENTERING FOR NEXT SEASON**

If you are presently a League Member and have completed your games this year you will automatically be entered into next season's contest unless you inform the Secretary by 31<sup>st</sup> July.

If you are a non-League Member, or if you failed to complete your games this season then you must tell the Secretary by 31<sup>st</sup> July if you wish to play next season.

### **RESULTS OF THIS SEASON**

Results so far received are elsewhere in this magazine. A fair number of games are still outstanding as this issue goes to press. Please try to complete your games by 31<sup>st</sup> July and notify the Secretary of your results. Sufficient results are in from Division 1 to confirm that Andrew Yates has retained his Championship this year, and congratulations to him.

### **SECRETARY'S TROPHY**

The results of the Secretary's trophy (Ratings prize) are in this month's magazine and congratulations are due to David Boddy for winning this prize.

### **GAMES FOR THE MAGAZINE**

Our thanks to those who have sent in games for publication, and to Michael Thistlewood for preparing them for the magazine. ***Please do send in your games, with analysis where possible. We have virtually nothing from members in this issue.*** Any game score sent will be considered for publication unless you state that you do not want this, as will any game played on the Scheming Mind web server.

### **SCHEMING MIND STANDARD CHESS LEAGUE**

Having won promotion last season we knew we would be facing much stronger opposition this season. At the time of writing we have drawn our first round match 5-5, but are 1-5 down in the second.

# THE SECRETARY'S TROPHY

## A RATINGS PRIZE

It was suggested last year that a new use be found for the Secretary's Trophy, which has remained in abeyance since our last residential congress. It was decided to award it as a Ratings Prize to the member whose Rating has most improved in the previous twelve months. The rules for this prize are brief:

It is open to any member of CCCC registered on Scheming Mind, as that is the only way we have a Rating.

The Ratings are taken at the beginning of June each year and the player with the highest percentage rise in their rating (or lowest percentage fall if everyone's rating should fall!) will win the prize.

Any player who has not completed a single game over the previous twelve months will be ineligible, to avoid someone taking the prize by their rating being unchanged if everyone else's falls.

Two additional rules apply to players joining during the year to avoid anomalies peculiar to new members. The first is that their initial Rating (which is little more than a guess) will be disregarded and the calculation made from the second month in which they have established a Rating. Secondly they must have established a Rating by January to avoid an improvement being earned over a very short period.

Andrew Yates very nearly retained the Trophy after another improvement to his rating, but in the end was pipped by our lowest rated player who achieved the highest increase, which demonstrates that this is a prize that can be won by anyone in the Club and is a reward for improvement rather than overall success.



	June 2022	June 2023	% change
David Boddy	886	940	106.09
Andrew Yates	1875	1977	105.44
Richard Cleaves	1419	1487	104.79
Tim Partridge	1474	1524	103.39
Bruce Carlin	1491	1520	101.95
David Hulme	1958	1963	100.26
Peter Turnbull *	1288	1288	100.00
John Druce	1205	1197	99.34
David Nye	1670	1640	98.20
Michael Thistlewood	1190	1156	97.14
Michael Hall	1578	1478	93.66
Lisa Battye	1705	1538	90.21

\* Inactive during the year so not eligible

**Congratulations to David Boddy who wins the Secretary's Trophy this year.**

**CLERGY CORRESPONDENCE CHESS CLUB  
RESULTS 2022 / 2023**

<b>Division 1</b>	Y		Hu		W		Ha		D		Total	%
Yates			1	½*	1	1*	1	1*	1	1	7 ½	94
Hulme	0	½			0	½	1	1*			(3/6)	50
Williamson	0	0	1	½*			1*	0	1	1*	4 ½	56
Hall	0	0	0	0	0	1*			1	1*	3	38
Druce	0	0			0	0	0	0			(0/6)	0
<b>Division 2A</b>	N		P		B							
Nye												
Partridge												
Boddy												
<b>Division 2B</b>	Cl		Ca		T							
Cleaves			1	0	1	1*					3	75
Carlin	0	1			1	½*					2 ½	63
Thistlewood	0	0	0	½							½	13

\* indicates a game won or drawn with the Black pieces.

Only two results are outstanding from Division 1 and I am able to confirm that Andrew Yates has retained his Championship.  
Congratulations to him.

Not a single result has been received from Division 2A.

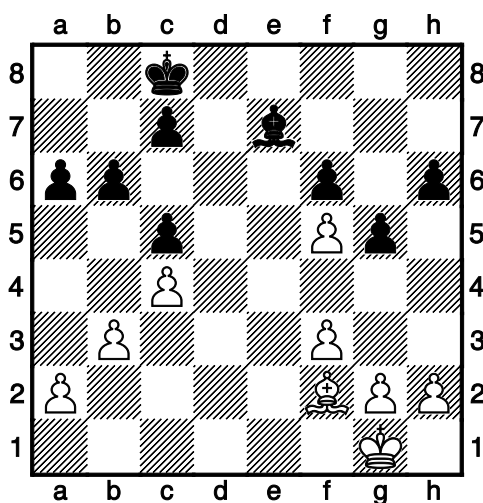
Division 2B is complete with Richard Cleaves winning promotion.

## Bruce Carlin – Richard Cleaves

**Bruce:** I have played Richard several times over the years and one peculiarity of our games has been the number of times we have ended up in the situation of (almost) all major pieces having been taken while (nearly) all the pawns were left on the board. By move 23 we have again reached this situation with 7 pawns each but nothing else apart from a Bishop (and King of course).

1.e4 e5 2.Nf3 Nc6 3.Bb5 a6 4.Bxc6 dxc6 5.Nc3 f6 6.d4 exd4 7.Nxd4 c5 8.Nde2 Qxd1+ 9.Nxd1 Be6 10.Bf4 0-0-0 11.Ne3 Ne7 12.0-0 g5 13.Bg3 h6 14.f3 Nc6 15.Rad1 Nd4 16.Nxd4 Rxd4 17.b3 Be7 18.Bf2 Rxd1 19.Rxd1 Rd8 20.Rxd8+ Bxd8 21.Nf5 Bxf5 22.exf5 Be7 23.c4 b6 **Bruce:** My aim now is to get every piece on to a white square so that they are safe from his Bishop. Then we will see what develops.

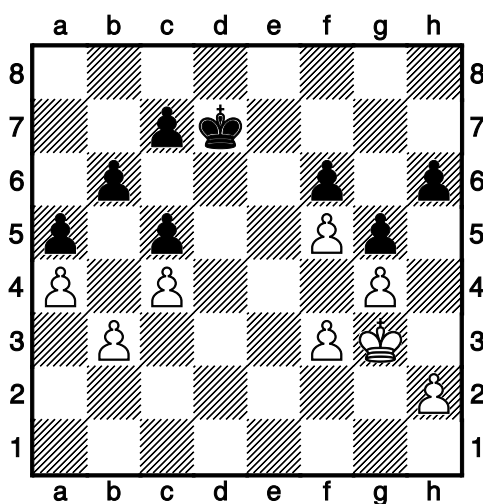
**Richard:** With my pawns all on black squares and in danger from Bruce/s Bishop, I want to exchange Bishops. That will then make for a balanced game. In Cheltenham I used to introduce our Cubs to chess with various simple games involving pawns. They were always impatient to get on to proper chess. Little did they realise how often games end up with just pawns! I wish I could remember what I used to teach the cubs.



24.g4 a5 25.a4 Kd7 26.Bg3 Bd6 27.Kg2 Bf4 28.Kh3 Bxg3  
29.Kxg3

**Bruce:** 27 If he wants to exchange Bishops that is fine by me, but I want him to initiate it as it will make my position stronger with the extra King side pawn.

**Richard:** 29 I had wanted Bruce to take my Bishop. I was content with the exchange and reckoned that with my King controlling files d and e, I could keep control of the game.



29...Kd6 30.f4 c6 31.h4 Ke7 32.hxg5 hxg5 33.fxg5 fxg5 34.Kf3  
Kf7

**Bruce:** 34 So once again I *thought I had the game won, only to realise that if he just moves side to side on the seventh rank then I can't progress and he can force a draw by repetition or sheer boredom - whichever comes first.*

**Richard:** *With hindsight (such a wonderful thing in chess!), I feel sure that I had calculated prior to this that a draw was inevitable as I was in control of those two central files. I must, however, have taken my eye off the ball!*  
35.Ke3 Kf6

**Bruce:** 35. Fortunately he hasn't seen this and does what I need him to do, and now I am fairly sure I have the win in

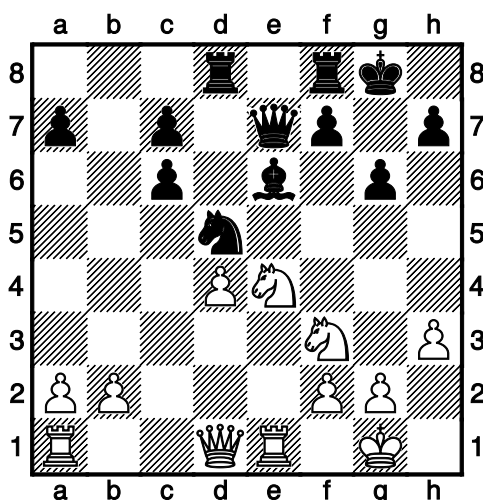
sight. I just need to avoid stalemate, but the fact that he has the move b5 available should help.

35.Ke3 Kf6 36.Ke4 Kf7 37.Ke5 Ke7 38.f6+ Kf7 39.Kf5 Kf8  
40.Kxg5 Kf7 41.Kf5

1-0

## Richard Cleaves – Bruce Carlin

1.e4 e5 2.Nf3 Nc6 3.Bb5 Nge7 4.0-0 g6 5.c3 Bg7 6.d4 exd4  
7.cxd4 d5 8.exd5 Nxd5 9.Re1+ Be6 10.Bxc6+ bxc6 11.Bg5 Bf6  
12.Bxf6 Qxf6 13.Nbd2 0-0 14.h3 Rad8 15.Ne4 Qe7

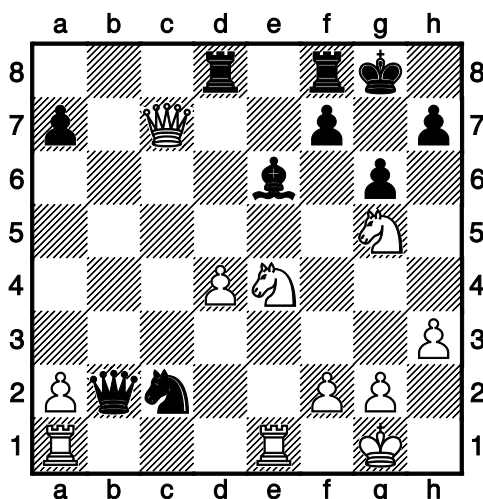


16.Qa4 Qb4 17.Qxc6 Qxb2 18.Nfg5 Nb4 19.Qxc7 Nc2

Richard: 16. I was worried when Bruce invited me to exchange Queens, as I feared that would give him an advantage. However I decided to go for an exchange of pawns on c6 and b2, as I felt that was fairly even. 19. When I took Bruce/s pawn on c7, I was excited at the possibility of mate.

Bruce: 19. And with Nc2 forking his Rooks I thought I had the job done! But I made the classic mistake of concentrating too hard on my own attack and overlooking his.

**Richard: 20. I had not noticed the fork and was disappointed to say the least. But then I returned to my own attack and , indeed, it really was mate in four moves!**



**20.Nf6+ Kg7 21.Nxe6+ Kxf6 22.Qe5+ Ke7 23.Nc5#**

**1-0**

---

## **JOHN LOXTON**

John Loxton died in April at the age of 93. He grew up on a farm on Somerset. As well as helping on the farm he had a holiday job at the Cadbury/Frys factory not far from his home and it was there that he developed his enduring love of chocolate!

John was primarily a scientist at school, and his first degree from Bristol University was a BSc. He was also a keen cricketer and batted and bowled for his University. Later he took up golf and was a supporter of Leicester City Football Club.

It was in that City that John was ordained into the Methodist Ministry, in which he served for 25 years, finally in East Grinstead, before moving into Anglican Ministry at around 50 years old. He trained for this at Chichester Theological College, and remained in that Diocese for this Ministry.

John was a member of CCCC for many years and I (secretary) enjoyed playing him on a number of occasions, as well as speaking with him on the phone (or more recently exchanging emails). He was a keen reader, and an active member of the Society of Ordained Scientists. John was married and had four children.






# CLERGY CORRESPONDENCE CHESS CLUB

Affiliated to the English Federation for Correspondence Chess  
and the Welsh Correspondence Chess Federation

[www.efcchess.org.uk/cccc](http://www.efcchess.org.uk/cccc)



- President :** The Revd. Canon Tim Partridge,   
St Crispin Retirement Village,  
NORTHAMPTON. NN5 4RA Email: [tim.partridge39@tiscali.co.uk](mailto:tim.partridge39@tiscali.co.uk)
- Treasurer :** The Revd. Charles Mason,  0118 934 1054  
The Parsonage, School Road,  
Waltham St. Lawrence,  
READING. RG10 0NU. Email: [revdcom@btinternet.com](mailto:revdcom@btinternet.com)
- Secretary:** The Revd. Bruce Carlin  01924 511066  
44 Frank Lane,  
DEWSBURY. WF12 0JJ. Email: [brucecarlin@cooptel.net](mailto:brucecarlin@cooptel.net)

## Life Members

Wilf Alexander	Ruggles Fisher	Charles Mason	Paul Waterfield
Lisa Battye	Antony Foster	David Nye	Steve Whitmore
David Boddy	Jeremy Garton	Tim Partridge	Michael Williamson
David Brown	Michael Hall	Brian Stevenson	Andrew Yates
Bruce Carlin	David Hulme	Michael Thistlewood	
Richard Cleaves	Matthew Joy	Peter Turnbull	

## Subscriptions

Life membership £ 80.00  
Annual membership £ 6.50

Current Membership Year : October 2022 to September 2023

Payments can be made to CCCC by BACS Account Name: Clergy Correspondence Chess Club  
Bank: Santander plc Sort Code: 09-01-56 Account No: 12314006

If you make payments by this method, please use your name as a reference so that our Treasurer can identify the payment, and email him to let him know it's coming and what it's for (eg subs, Scheming Mind, book purchase, etc). Alternatively you could include the purpose of the payment in the reference.

The Secretary holds members' name, address, phone number, and email addresses where provided, their CCCC division, and membership of any team, and the Treasurer holds members' subscription records.