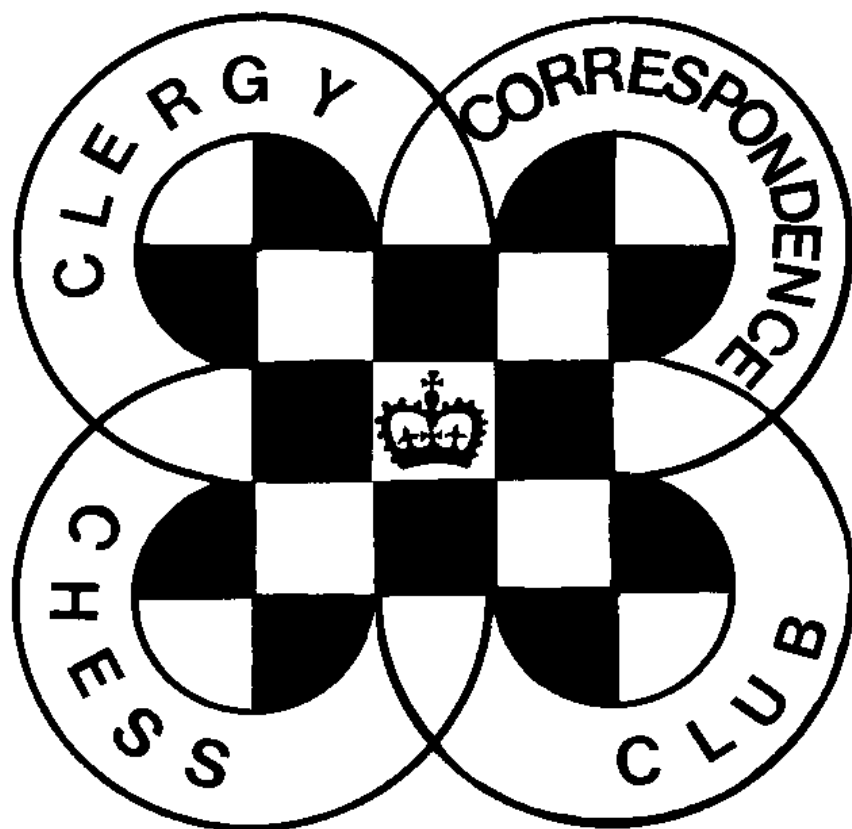
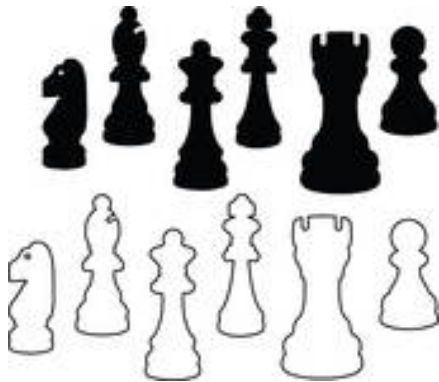


# **CHESS minister !**

**June 2022**



**CLERGY CORRESPONDENCE CHESS CLUB**



# **CHESS Minister!**

## **June 2021**

### **END OF SEASON**

The current season finishes on 31<sup>st</sup> July. Please ensure that all results are notified by that date. Failure to do this may result in games being scored as a loss to both players. Unfinished games can be submitted for adjudication if necessary and details of how to do this are available from the Secretary.

### **ENTERING FOR NEXT SEASON**

If you are presently a League Member and have completed your games this year you will automatically be entered into next season's contest unless you inform the Secretary by 31<sup>st</sup> July.

If you are a non-League Member, or if you failed to complete your games this season then you must tell the Secretary by 31<sup>st</sup> July if you wish to play next season.

### **RESULTS OF THIS SEASON**

Results so far received are elsewhere in this magazine. A fair number of games are still outstanding as this issue goes to press. Please try to complete your games by 31<sup>st</sup> July and notify the Secretary of your results.

### **SECRETARY'S TROPHY**

The Secretary's trophy (Ratings prize) is awarded for the first time this month. Details are elsewhere in the magazine, but congratulations to Andrew Yates, the first winner of this prize.

### **GAMES FOR THE MAGAZINE**

Our thanks to those who have sent in games for publication, and to Michael Thistlewood for preparing them for the magazine. ***Please do send in your games, with analysis where possible. We have virtually nothing from members in this issue.*** Any game score sent will be considered for publication unless you state that you do not want this, as will any game played on the Scheming Mind web server.

### **SCHEMING MIND STANDARD CHESS LEAGUE**

Since the last issue we comfortably beat SCCA C 7-3, and are leading Team Great Britain B 5-4 with one game to finish, so we cannot lose this match. We have recently begun our final round against Northern Trappers B but at the time of writing no games have been completed. Our Team continues to outperform expectations and we are currently placed 5<sup>th</sup> in our Division, but could end up higher. if we can win the remaining matches.

I have had little (almost no) response to my question in the last issue as to whether we might open our Team in this tournament to non-members of CCCC, involving a name change to make that clear. I would be pleased to hear more views on this which would enable us possibly to strengthen the Team, but also to enable players to be involved in fewer rounds.

# THE SECRETARY'S TROPHY

## A RATINGS PRIZE

It was suggested last year that a new use be found for the Secretary's Trophy, which has remained in abeyance since our last residential congress. It was decided to award it as a Ratings Prize to the member whose Rating has most improved in the previous twelve months. The rules for this prize are brief:

It is open to any member of CCCC registered on Scheming Mind, as that is the only way we have a Rating.

The Ratings are taken at the beginning of June each year and the player with the highest percentage rise in their rating (or lowest percentage fall if everyone's rating should fall!) will win the prize.

Any player who has not completed a single game over the previous twelve months will be ineligible, to avoid someone taking the prize by their rating being unchanged if everyone else's falls.

Two additional rules apply to players joining during the year to avoid anomalies peculiar to new members. The first is that their initial Rating (which is little more than a guess) will be disregarded and the calculation made from the second month in which they have established a Rating. Secondly they must have established a Rating by January to avoid an improvement being earned over a very short period.



These are the results of the first year's Ratings Prize.

	June 2021	June 2022	Percentage Change
Yates, A.	1743	1875	107.57
Druce, J.	1136	1205	106.07
Nye, D.	1604	1670	104.11
Hall, M.	1554 <sup>1</sup>	1578	101.54
Cleaves, R.	1400	1419	101.36
Turnbull, M.	1288	1288 <sup>2</sup>	100.00
Battye, L.	1725	1705	98.84
Hulme, D.	2005	1958	97.66
Partridge, T.	1524	1474	96.72
Carlin, B.	1622	1491	91.92
Thistlewood, M.	1305	1190	91.19
Boddy, D.	1001	886	88.51

**Congratulations to Andrew Yates who wins the Secretary's Trophy this year.**

<sup>1</sup> Michael Hall joined during the year. This is his second month's Rating on SM, from October 2021.

<sup>2</sup> Does not qualify having not played in this twelve month period.

**CLERGY CORRESPONDENCE CHESS CLUB  
RESULTS 2021 / 2022**

<b>Division 1</b>	H		Y		N		W		C		Total	%
Hulme									1	1*		
Yates									1	1*		
Nye									1	0		
Williamson									1	1*		
Carlin	0	0	0	0	0	1	0	0			1 / 6	
<b>Division 2A</b>	P		T		H							
Partridge					½	0						
Thistlewood					0	0						
Hall	½*	1	1	1*							3 ½ / 4	
<b>Division 2B</b>	C		D		B							
Cleaves			0	½*	1*	1					2 ½ / 4	
Druce	1*	½										
Boddy	0	0										

\* indicates a game won or drawn with the Black pieces.

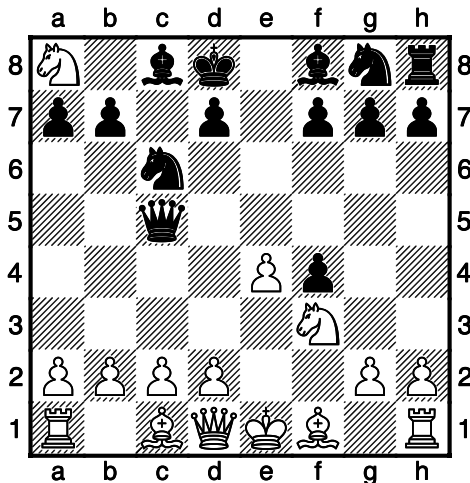
**There are not many results in at this stage,  
far fewer than I would expect by mid-June.**

Please let me have your results as they come in and by 31 July at the latest.

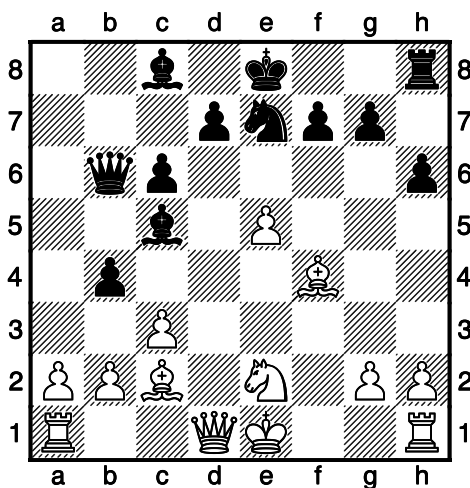
I will continue to post results on our Facebook page as I receive them so that you all know what is happening in your Division.

**A. N. Other – Lisa Battye**

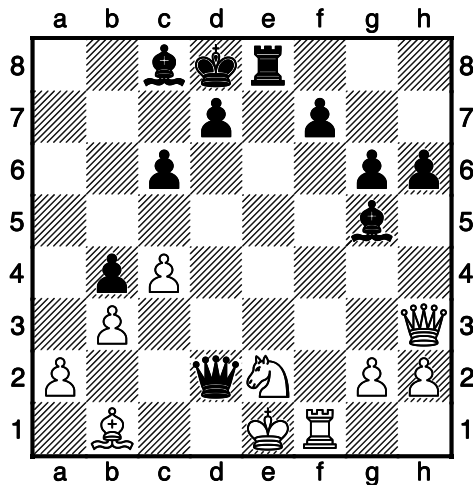
1.e4 e5 2.f4 Nc6 3.Nf3 Qf6  
4.Nc3 Qd6 5.Nb5 Qc5  
6.Nxc7+ Kd8 7.Nxa8 exf4



8.d4 Qd6 9.e5 Qb8 10.Bxf4  
h6 11.d5 Ke8 12.Nb6 axb6  
13.dxc6 bxc6 14.Ba6 Qa8  
15.Bc4 b5 16.Bb3 Qa5+  
17.c3 Bc5 18.Bc2 Qb6  
19.Nd4 b4 20.Ne2 Ne7



21.Qd2 Bf2+ 22.Kf1 Nd5  
23.c4 Nxf4 24.Qxf4 Be3  
25.Qg3 g6 26.Rd1 Ba6  
27.Rd3 Bg5 28.b3 Rf8  
29.Ke1 Qa5 30.Qh3 Bc8  
31.Bb1 Qxe5 32.Rd4 Kd8  
33.Rf1 Re8 34.Bd3 Qxd4  
35.Bb1 Qd2+

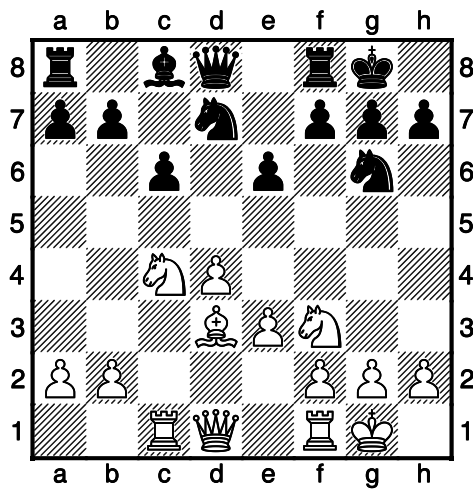


0-1

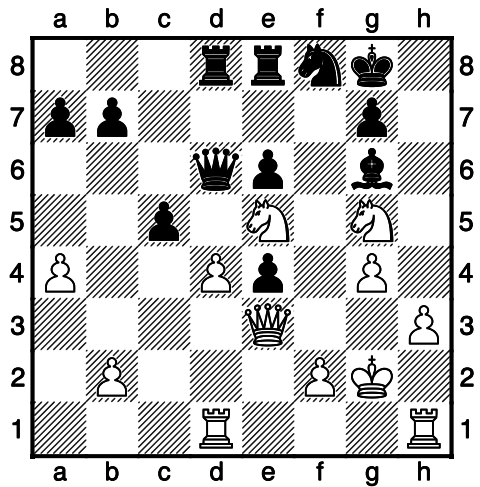
My childhood chess hero was Capablanca and so, as we have no more club games, I am going to use some of his games:

**Capablanca, Jose Raul – Tylor, Theodore Henry**  
Hastings 1930

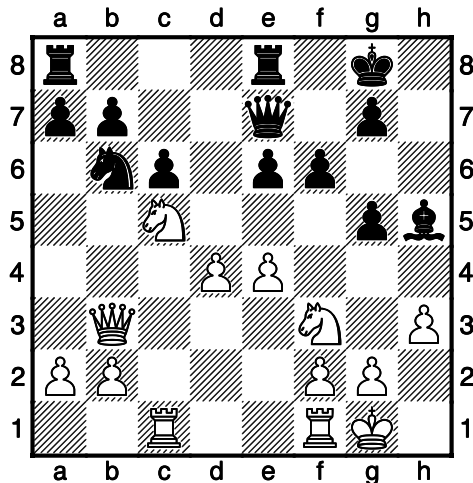
1.d4 d5 2.c4 e6 3.Nf3 Nf6  
4.Bg5 c6 5.Nbd2 Nbd7 6.e3  
Be7 7.Bd3 0-0 8.0-0 dxc4  
9.Nxc4 Nd5 10.Bxe7 Nxe7  
11.Rc1 Ng6



12.Bxg6 hxg6 13.e4 Nb6  
 14.Nce5 Bd7 15.Qd2 Be8  
 16.Qb4 f6 17.Nd3 g5 18.Nc5  
 Qe7 19.h3 Bh5 20.Qb3 Rfe8



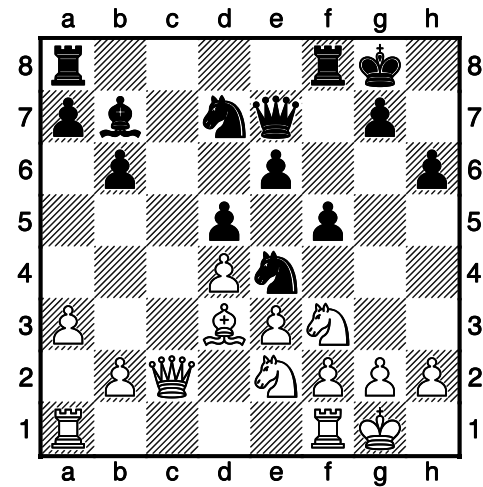
31.Qf4 cxd4 32.Nxg6 Qxf4  
 33.Nxf4 e5 34.Ne2



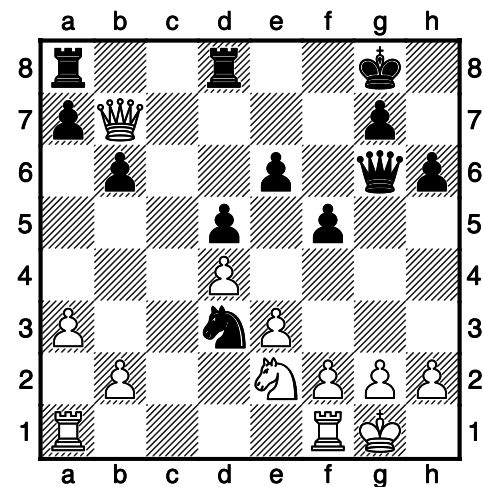
21.Rfe1 Rad8 22.g4 Bg6  
 23.a4 Rb8 24.Qe3 Nd7  
 25.Nd3 Rbd8 26.Kg2 Nf8  
 27.Rh1 Qd6 28.Rcd1 f5  
 29.Nde5 fxe4 30.Nxg5 c5

Winter, William-  
 Capablanca, Jose Raul  
 Hastings 1930

1.d4 Nf6 2.c4 e6 3.Nc3 d5  
 4.Bg5 Nbd7 5.e3 c6 6.a3  
 Be7 7.Nf3 h6 8.Bh4 Ne4  
 9.Bxe7 Qxe7 10.Qc2 f5  
 11.Bd3 0-0 12.0-0 b6  
 13.cxd5 cxd5 14.Ne2 Bb7



15.Qc7 Nd6 16.Ne5 Rfd8  
 17.Ng6 Qf6 18.Qxd6 Nc5  
 19.Qe7 Nxd3 20.Qxb7 Qxg6



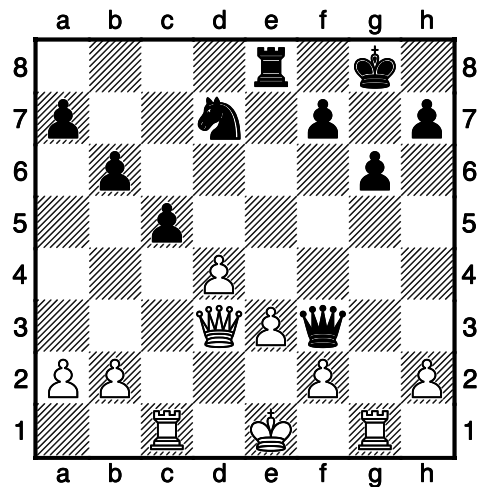
21.b3 e5 22.dxe5 Qe8  
 23.Nd4 Nc5 24.Qc6 Qxe5  
 25.Qg6 Rf8 26.b4 Rf6  
 27.Qh5 Ne4 28.Rac1 Nd6  
 29.Qf3 Ne4 30.Rfd1 f4  
 31.Nc6 Qe8 32.b5 fxe3  
 33.Qxe3 Nxf2 34.Rxd5 Qxe3

0-1

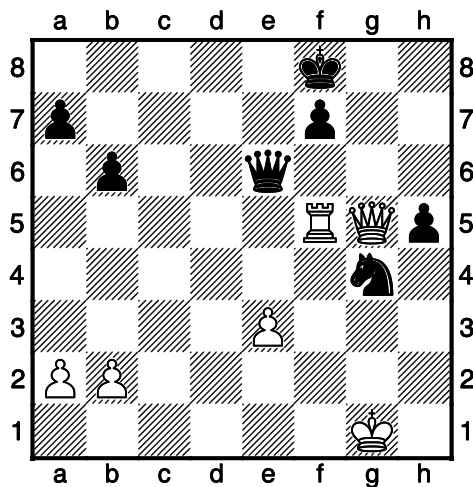
## Capablanca, Jose Raul – Lasker, Emanuel

World Championship 12th  
 Havana (5), 29.03.1921

1.d4 d5 2.Nf3 Nf6 3.c4 e6  
 4.Bg5 Nbd7 5.e3 Be7 6.Nc3  
 0-0 7.Rc1 b6 8.cxd5 exd5  
 9.Qa4 c5 10.Qc6 Rb8  
 11.Nxd5 Bb7 12.Nxe7+ Qxe7  
 13.Qa4 Rbc8 14.Qa3 Qe6  
 15.Bxf6 Qxf6 16.Ba6 Bxf3  
 17.Bxc8 Rxc8 18.gxf3 Qxf3  
 19.Rg1 Re8 20.Qd3 g6



21.Kf1 Re4 22.Qd1 Qh3+  
 23.Rg2 Nf6 24.Kg1 cxd4  
 25.Rc4 dxe3 26.Rxe4 Nxe4  
 27.Qd8+ Kg7 28.Qd4+ Nf6  
 29.fxe3 Qe6 30.Rf2 g5 31.h4  
 gxh4 32.Qxh4 Ng4 33.Qg5+  
 Kf8 34.Rf5 h5 35.Qd8+ Kg7  
 36.Qg5+ Kf8 37.Qd8+ Kg7  
 38.Qg5+ Kf8

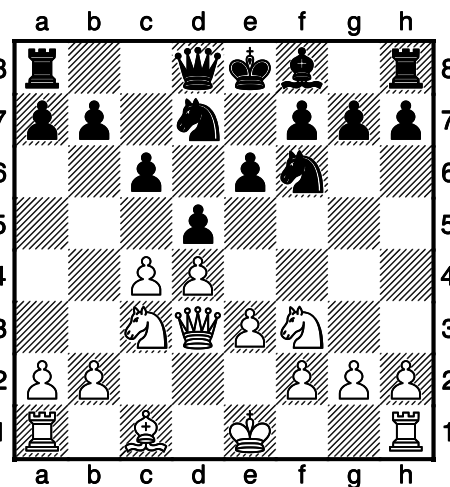


39.b3 Qd6 40.Qf4 Qd1+  
41.Qf1 Qd7 42.Rxh5 Nxe3  
43.Qf3 Qd4 44.Qa8+ Ke7  
45.Qb7+ Kf8 46.Qb8+

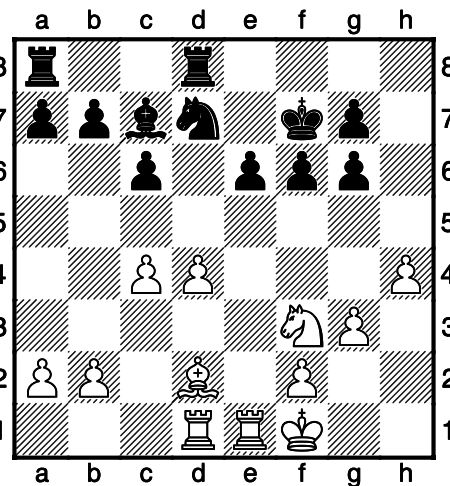
1-0

**Lasker, Emanuel –  
Capablanca, Jose Raul**  
World Championship 12th  
Havana (8), 03.04.1921

1.d4 d5 2.Nf3 Nf6 3.c4 c6  
4.e3 Bf5 5.Nc3 e6 6.Bd3  
Bxd3 7.Qxd3 Nbd7



8.0-0 Bd6 9.e4 dxe4 10.Nxe4  
Nxe4 11.Qxe4 0-0 12.Bd2  
Qf6 13.Rad1 Qg6 14.Qxg6  
hxg6 15.Bc3 Rfd8 16.Rfe1  
Bc7 17.Kf1 Nf8 18.Bd2 f6  
19.h4 Kf7 20.g3 Nd7



21.Be3 Nb6 22.Rc1 Nc8  
23.Re2 Ne7 24.Rc3 a6 25.a4  
Rab8 26.b4 b5 27.cxb5 axb5  
28.a5 Bd6 29.Rb3 Nd5  
30.Bd2 Rdc8 Game drawn.






# CLERGY CORRESPONDENCE CHESS CLUB

Affiliated to the English Federation for Correspondence Chess  
and the Welsh Correspondence Chess Federation

[www.efcchess.org.uk/cccc](http://www.efcchess.org.uk/cccc)  
(then select CCCC from Member organisations)



- President :** The Revd. Canon Tim Partridge,   
St Crispin Retirement Village,  
NORTHAMPTON. NN5 4RA Email: [tim.partridge39@tiscali.co.uk](mailto:tim.partridge39@tiscali.co.uk)
- Treasurer :** The Revd. Charles Mason,  0118 934 1054  
The Parsonage, School Road,  
Waltham St. Lawrence,  
READING. RG10 0NU. Email: [revdcom@btinternet.com](mailto:revdcom@btinternet.com)
- Secretary:** The Revd. Bruce Carlin  01924 511066  
44 Frank Lane,  
DEWSBURY. WF12 0JJ. Email: [brucecarlin@cooptel.net](mailto:brucecarlin@cooptel.net)

## Life Members

Wilf Alexander	Ruggles Fisher	John Loxton	Peter Turnbull
Lisa Battye	Antony Foster	Charles Mason	Paul Waterfield
David Boddy	Jeremy Garton	David Nye	Steve Whitmore
David Brown	Michael Hall	Tim Partridge	Michael Williamson
Bruce Carlin	David Hulme	Brian Stevenson	Andrew Yates
Richard Cleaves	Matthew Joy	Michael Thistlewood	

## Subscriptions

Life membership £ 80.00  
Annual membership £ 6.50

Current Membership Year : October 2021 to September 2022

Payments can be made to CCCC by BACS Account Name: Clergy Correspondence Chess Club  
Bank: Santander plc Sort Code: 09-01-56 Account No: 12314006

If you make payments by this method, please use your name as a reference so that our Treasurer can identify the payment, and email him to let him know it's coming and what it's for (eg subs, Scheming Mind, book purchase, etc). Alternatively you could include the purpose of the payment in the reference.

The Secretary holds members' name, address, phone number, and email addresses where provided, their CCCC division, and membership of any team, and the Treasurer holds members' subscription records.