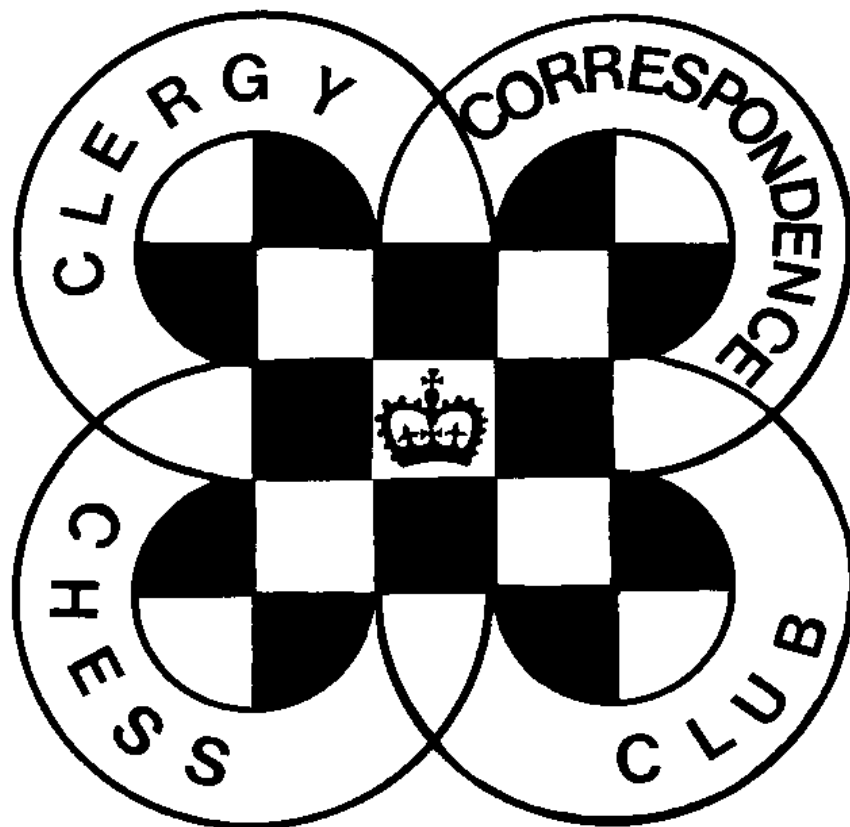
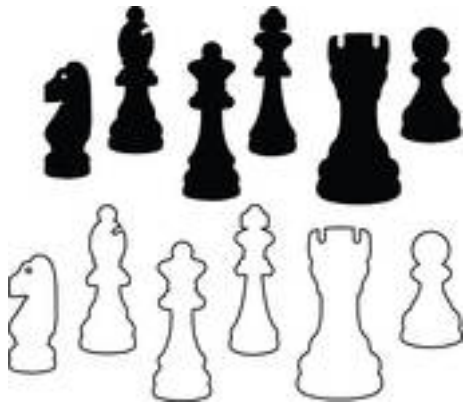


CHESS minister !

February 2021



CLERGY CORRESPONDENCE CHESS CLUB



CHESS Minister!

February 2021

CURRENT SEASON

All games should now be underway in the current season even if you are taking advantage of the staggered starting dates allowed to electronic players. If there are any games not yet underway please do get them started now.

GAMES

As always, my thanks to Michael Thistlewood who edits and prepares the games for the magazine. He does an excellent job but can only work with the material you send in, so please send in game scores, annotated if possible.

SCHEMING MIND STANDARD CHESS LEAGUE

At the time of our last issue our match was finely poised at 2-3 against International Chess Friends. Sadly we added only half a point to that score and lost the match 2½-7½. However in the next round we did rather better, beating Tîm Cymru (Team Wales) 6½-3½. We are currently in the final round of this season against Team Great Britain B where we are finely poised at 4-4 as I write this, though we are well outranked by our opposing Team.

While on the subject of Scheming Mind if you don't play for a while you become an 'inactive member.' You don't lose your membership but other players can find it hard to find you or challenge you. If for any reason you don't play for a month or two just send me a 'Private Message' on the web site or something, every month or two, jut to keep your membership from hibernating.

NEWS OF MEMBERS

Sadly we record the deaths of **Stanley Hall** and **David Lowe**, whose obituaries are in this issue.

We welcome **John Druce**. Although John has joined part way through the season, with the agreement of other members of Division 2B I have included him in this year's league. His contact details are John Druce, 9 Fuller's Close, Hadleigh. IPSWICH. IP7 5AS. 01473 827242. john.glenda@jgdruce.plus.com. John writes, 'I have served in and around the Black Country (Lichfield Diocese) and on the edge of London (Rochester), before moving to St. Edmundsbury & Ipswich, where I remain following retirement some 20 years ago. Outside church my interests are growing vegetables, and music - playing violin in two orchestras, albeit not at the moment of course.'

ACCOUNTS

Accounts for the last year are elsewhere in the magazine and our account details are now on the back cover for anyone who needs to make a payment for any reason.

STANLEY HALL

Stanley Hall, who died last November at the age of 93, was a proud Lancastrian and a keen cricketer, perhaps more proud of playing Lancashire League for Backup than for the Sierra Leone National Team!

But before he got to either, he had spent his National Service down a coal mine in Burnley as a result of his pacifist views. Later in life, he came to believe that this had been wrong and that some actions were so evil that they need forcible resistance, the challenge being to discriminate.

Following that he went to university in Manchester where he made lifelong friends in the SCM. Then it was off to missionary training college where he met Constance from Preston, and the engaged pair went to West Africa. They settled in Sierra Leone, married and had 3 girls, returning to England in 1964, when Stanley taught accountancy at Bradford Technical College.

He was very active in church both as a local preacher and as leader of the Sunday youth group and later he trained for the Methodist ministry, serving in Royton and Ashton-Under-Lyne. He retired in Royton and remained in his own home before retiring back to Royton.



NEW BOOK

Set in Ampthill, Bedfordshire, *With Clouds Descending* is the story of the Low family told by a priest who himself is part of the Low clan, and presented as if he were the rector of Ampthill.

This semi-autobiographical book is set 130 years in the past and is mainly based on real events. However, there is also a smattering of artistic licence throughout the book. The often amusing and sometimes risqué anecdotes throughout the book are inspired from the diaries of the author that he has kept for twenty-five years (1984-2019).

The Low family is quite a large family and full of diverse characters who deal with incidents ranging from floods and riots to murder and war, that are all loosely based on fact. Every family has skeletons in their cupboards; with some families those skeletons are deeply buried. This is not the case with the Low family which makes this book a fascinating read.

The book is published by Pegasus and is available in bookshops or for £7.99 (as I write it is available on Amazon for less than this). Signed copies were available from the author, but sadly David died at the end of 2020 so this option is no longer available.

MEMBERS PHOTOS

By chance the photos of Stanley Hall and David Lowe which I have re-used here were both on the same page of the June 2016 issue of CHESS minister! along with their own brief biographies.

If you have not yet contributed your own then why not send the Secretary a photo and few words about yourself for use in a future issue of this magazine.

DAVID LOWE

David Lowe died at the end of 2020 of pancreatic cancer at the age of 77.

David was trained at Kelham and ordained in Derby Diocese, where he worked for 11 years before moving to Suffolk where he remained for the rest of his ministry and into retirement.

David learned to play chess at school but his interest in football took precedence at that stage. He came back to chess after moving to Suffolk and was introduced to CCC by a colleague who was a member. As well as playing in our Leagues he was a regular member of our Team in the Scheming Mind tournament.

We are happy to include in this issue 3 of David's games, including the last one he played on Scheming Mind (and won!).



THE SECRETARY'S TROPHY

This Trophy was bought by our Secretary to present to the winner of our first residential Congress, and was duly passed on to the winner of the second one (see the archive on our website for more information and photos about these). David Hulme has held this trophy now since 1992 as there has never been much enthusiasm for a Congress since then.



David has suggested that perhaps it is time to find a new use for this trophy and there are currently two suggestions.

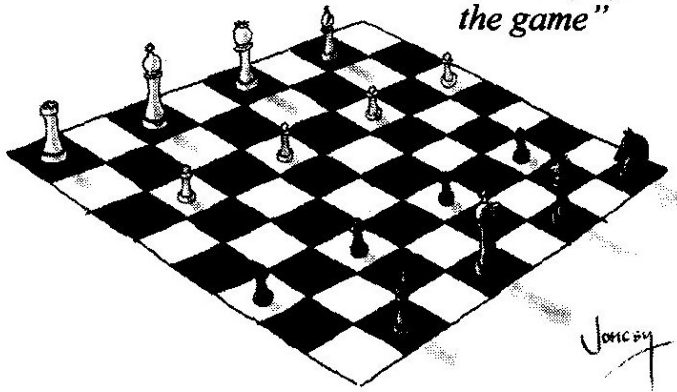
Win Ratio in Team Matches. The first would be linked to our Scheming Mind Team and would be awarded to the player with the highest win ratio over a season. This would not necessarily go to one of our top players as they meet stronger opposition and are perhaps likely to end up with a lower win ratio than someone who plays on Board 5 but wins their games. I did a test on 3 seasons and it did throw up one potential drawback in that in one season a player who only played 4 games, but won them all, would have won the trophy over someone who played 10 games but lost two of them, and then in another season a player who only played 3 games but won them all would have taken the trophy over others who had

played 8 or 10 games. This could be overcome by setting a minimum number of games to be played. But a further possible problem is that I am not at all sure whether we will be able to field a Team on SM for very much longer, maybe putting the trophy out of use again just as we found a new use for it!

Ratings Prize. The second would be to award it as a Ratings Prize to the player who had the greatest percentage increase in their Rating over a year. This would still be limited to members who play on Scheming Mind as only those members have a Rating at present, but it would result from any game played on SM, whether for our Team, our internal competition, or indeed any other game you might play outside the Club. We would take Ratings at the beginning of October each year and then the following year and the player with the highest percentage increase in their Rating (or lowest percentage drop if everyone's was worse!) would take the trophy.

Let the Secretary know if you have any preference for either of these two ideas, or indeed if you can think up an even better one!

"Face it, social distancing makes a mockery of the game"



Chess of drawer's

Sir,

As the daughter of the vicar who has served for 23 years as treasurer of the Clergy Correspondence Chess Club, I was aghast to see that the chessboard in Jonesy's cartoon (p8, Eye 1527) was set up the wrong way round. As even every patzer knows, it's "white on the right" – a helpful shorthand for the current state of western politics too.

LYDIA BARTLETT,

London.

THE WRONG BOARD!

It is amazing how often publications manage to show chess boards the wrong way round.

To the left is a cartoon from *Private Eye* in July last year sent to me by Charles Mason and reproduced with permission of *Private Eye*.

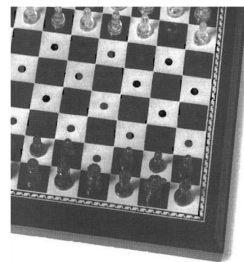
This triggered the letter from Charles' daughter published in the following issue of *Private Eye*.

This reminded me of a similar case back in 1994 when Castle Acoustics (a loudspeaker company) placed this advert in *Gramophone* magazine (in those days we didn't have the technology to reproduce photos in *CHESS* minister! so this is its first outing here).

The advert was supposed to contrast the cheap plastic set at the top with the fine wooden set in the main picture which was to be representative of the quality of their loudspeakers.





But as I pointed out to them in a letter it is the plastic set that is set out correctly while the fine wooden pieces are on a board incorrectly orientated, thus somewhat negating their argument.

Castle acoustics did have the grace to reply to my letter and apologise for their error.




A QUESTION
OF QUALITY



 If you enjoy the touch of injection-moulded plastic, you'll probably go to pieces when buying loudspeakers  The Castle customer never falls for fools mate and his strategy allows the choice of seven handcrafted models in nine real wood veneers before making an important move  To play the game, advance to your local Castle dealer or contact us for his position 


CASTLE

CCCC ACCOUNTS

Income and Expenditure Account for year ended 31.7.20

	<u>2019/20</u>	<u>(2018/19)</u>		<u>2019/20</u>	<u>(2018/19)</u>
<u>Income £</u>			<u>Expenditure £</u>		
Subscriptions	19.50	(24.00)	Secretary's Expenses	18.71	(18.17)
Bank Interest	8.14	(7.16)	EFCC Affiliation	15.00	(15.00)
Scheming Mind p'ments	21.00	(15.00)	Scheming Mind tokens		(50.00)
Alice book sales	<u>2.58</u>	<u>(105.18)</u>	Surplus for year	<u>17.51</u>	<u>(68.17)</u>
	51.22	(151.34)		51.22	(151.34)

Balance Sheet as at 31.7.20

	<u>£</u>
Balances brought forward	1124.10
Add: surplus for year	17.51
TOTAL NET ASSETS	<u>1141.61</u>
<u>Represented by:</u>	
Santander UK plc Business Account	115.90
NS&I Investment Account (Life Membership)	1025.71
	<u>1141.61</u>

Treasurer's Report on the 2019/20 Accounts

I am glad to report that once again we have a surplus.

As we are all aware, savings interest rates remain very low, though in relation to total Club income this year, the bank interest is not insignificant.

On the expenditure side, thanks to electronic banking I have again be able to avoid expenses of my own, and our Secretary's are virtually unchanged. We still have a stock of Scheming Mind tokens, which helps with the bottom line as long as members keep buying them.

At the end of the financial year 2019/20 the value of the Life Membership Fund stood at £46.62 per Life Member (previous year: £42.40). Sadly this increase represents the death of two of our members rather than any investment performance.

For 2020/21 we are holding subscriptions at the same level as last year: £6.50 for Annual and £80.00 for Life. With electronic banking, there's no need for an envelope, a stamp, or a walk to the letterbox, so please try to keep up to date with your subs: at the end of the 2019/20 year there was one outstanding.

Charles Mason – Hon Treasurer, CCCC

CLERGY CORRESPONDENCE CHESS CLUB RESULTS 2020 / 2021

Division 1	D		H		N		Y		S			
Dunning			v	v	v	v	v	v	v	v	VOID	
Hulme	v	v			1	1						
Nye	v	v	0	0								
Yates	v	v										
Smith	v	v										
Division 2A	W		L		P							
Williamson												
Loxton												
Partridge												
Division 2B	Ca		Cl		T		D					
Carlin					1*	1						
Cleaves												
Thistlewood	0	0										
Druce												

* indicates a game won or drawn with the Black pieces.

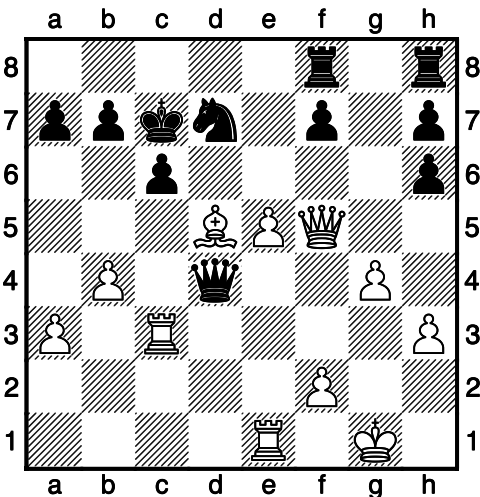
Our already depleted Divisions took a further drop almost as the season began. David Lowe had to withdraw from Division1 but his place was taken by Mike Smith, but then reigning champion Stephen Dunning also had to withdraw.

We were however able to add new member John Druce to Division 2B

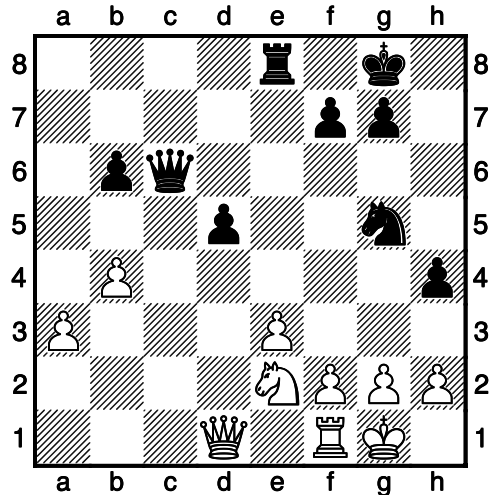
Just four results in so far this season, from Division 1, but it is easily days.

**David Lowe - Boo Qadoom
[B00]**

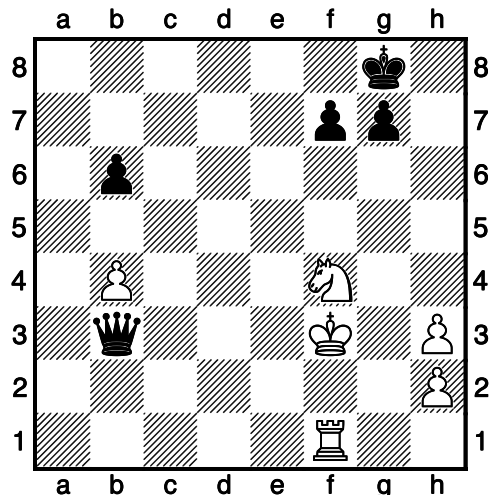
1.e4 d5 2.exd5 Qxd5 3.Nc3 Qa5
4.d4 Nf6 5.Nf3 Bg4 6.h3 Bh5 7.g4
Bg6 8.b4 Qb6 9.Bg2 c6 10.Bd2 e6
11.a3 Bd6 12.Qe2 Bxc2 13.Bh6
gxh6 14.Qxc2 Nd5 15.0-0 Nd7
16.Rfe1 0-0-0 17.Nxd5 exd5
18.Ne5 Bxe5 19.dxe5 Rde8
20.Qf5 Ref8 21.Rac1 Qb5 22.Rc5
Qb6 23.Bxd5 Kc7 24.Rc3 Qd4 25.
Rd3 Black Resigns



24.Rac1 Ng5 25.Be2 Rxc1
26.Nxc1 Re8 27.Bg4 Bxg4
28.Qxg4 h5 29.Qd1 Qc6 30.Ne2
h4



31.Qc1 Qa8 32.Qb2 h3 33.gxh3
Nf3+ 34.Kg2 d4 35.Kg3 dxe3
36.fxe3 Rxe3 37.Kf2 Rxa3 38.Nf4
Ra2 39.Qxa2 Qxa2+ 40.Kxf3
Qb3+



**Mexican Team - David Lowe
[A04]**

1.Nf3 d5 2.b3 Nf6 3.Bb2 e6 4.d3
Nc6 5.e3 Be7 6.Be2 0-0 7.c4 Ne8
8.0-0 b6 9.cxd5 exd5 10.Qc2 Nb4
11.Qd1 c5 12.a3 Nc6 13.d4 Nd6
14.dxc5 Ne4 15.cxb6 axb6 16.b4
Bf6 17.Nd4 Nxd4 18.Bxd4 Bf5
19.Bf3 Qd6 20.Bxf6 Qxf6 21.Nd2
Rfd8 22.Nb3 Rac8 23.Qd4 Qg6

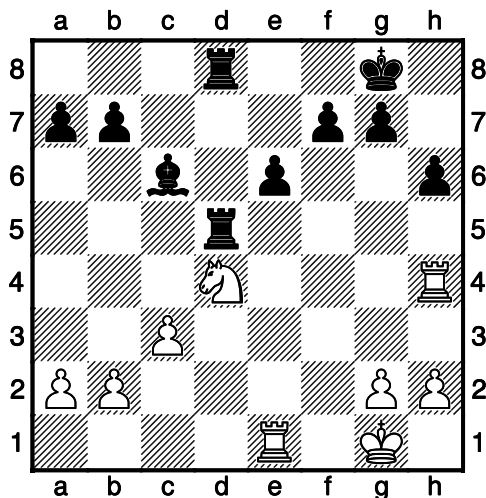
41.Kg4 Qxb4 42.h4 b5 43.h5 Qd4
44.Rc1 Kh7 45.h3 b4 46.h6 b3
47.hxg7 Kxg7 48.Kg5 Qf6+

49.Kg4 b2 50.Nh5+ Kg6 51.Nf4+ Qxf4+ 52.Kxf4 bxc1Q+ 53.Kg4 f5+ 54.Kh4 Qf4#

0-1

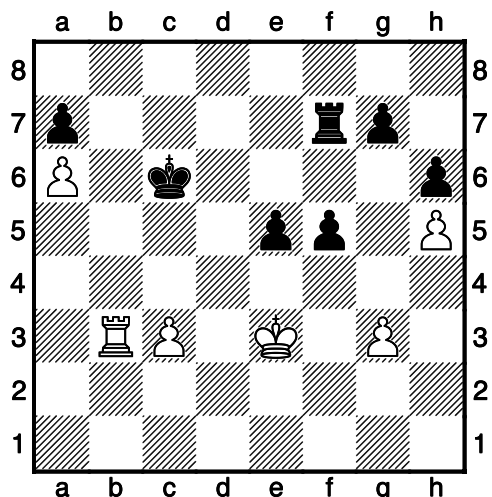
**David Lowe - Mexican Team
[B00]**

1.e4 e6 2.d4 d5 3.Nc3 dxe4 4.Nxe4 Nd7 5.Nf3 Ngf6 6.Nxf6+ Nxf6 7.Bg5 Be7 8.Bd3 h6 9.Bh4 0-0 10.Qe2 Nd5 11.Bxe7 Qxe7 12.0-0 Nf4 13.Qe4 Nxd3 14.Qxd3 c5 15.Rfe1 cxd4 16.Nxd4 Bd7 17.Qg3 Rac8 18.Re4 Bc6 19.Rh4 Qf6 20.Re1 Rfd8 21.c3 Rd5 22.f4 Kh7 23.Nf3 Rcd8 24.Ng5+ Kh8 25.Ne4 Qf5 26.Qg5 Qxg5 27.Nxg5 Kg8 28.Nf3 Ra5 29.f5 Rxf5 30.Nd4 Rfd5



31.Rhe4 Ra5 32.Nxc6 bxc6 33.a4 Rad5 34.Kf2 Rd2+ 35.R1e2 Rxe2+ 36.Kxe2 Kf8 37.Ke3 Ke7 38.h4 f6 39.Rb4 Rd7 40.h5 e5 41.a5 Kd6 42.a6 f5 43.g3 c5

44.Rc4 Kd5 45.Ra4 Kc6 46.b4 cxb4 47.Rxb4 Kc5 48.Rb7 Kc6 49.Rb3 Rf7



50.c4 f4+ 51.gxf4 Rxf4 52.Rb7 Rg4 53.Rxa7 Kb6 54.Re7 Rxc4 55.a7 Ra4 56.Rxg7 Rxa7 57.Rg6+ Kc5 58.Ke4 Ra4+ 59.Kxe5 Ra2 60.Rxh6 Re2+ 61.Kf6 Kd5 62.Rg6 Kd6 63.h6 Rf2+ 64.Kg7+ Ke7 65.h7 Rf7+ 66.Kh6 Rxh7+ 67.Kxh7 Kf7 68.Ra6 Kf8 69.Ra7 Ke8 70.Kg7 Kd8 71.Kf7 Kc8 72.Ke6 Kd8 73.Rg7 Kc8 74.Kd6 Kb8 75.Kc6 Ka8 76.Kb6 Kb8 77.Rg8#

1-0

David sent me these games just after he had been diagnosed with cancer. These are very good games. It was always a pleasure to play with David and we shall miss him.




Michael.

CLERGY CORRESPONDENCE CHESS CLUB

Affiliated to the English Federation for Correspondence Chess
and the Welsh Correspondence Chess Federation

www.efcchess.org.uk/cccc
(then select CCCC from Member organisations)



- President :** The Revd. Canon Tim Partridge, 
St Crispin Retirement Village,
NORTHAMPTON. NN5 4RA Email: tim.partridge39@tiscali.co.uk
- Treasurer :** The Revd. Charles Mason,  0118 934 1054
The Parsonage, School Road,
Waltham St. Lawrence,
READING. RG10 0NU. Email: revdcom@btinternet.com
- Secretary:** The Revd. Bruce Carlin  01924 511066
44 Frank Lane,
DEWSBURY. WF12 0JJ. Email: brucecarlin@cooptel.net

Life Members

W. Alexander	T.R. Fisher	D.C. Nye	P.T. Waterfield
L. Batty	A.J. Foster	T.R. Partridge	S. Whitmore
D. Boddy	J. Garton	M. Smith	M.J. Williamson
D. Brown	D.S.H. Hulme	B. Stevenson	A. Yates
W.P.B. Carlin	M. Joy	M.J. Thistlewood	
R. Cleaves	J.S. Loxton	P. Turnbull	

Subscriptions

Life membership £ 80.00
Annual membership £ 6.50

Current Membership Year : October 2020 to September 2021

Payments can be made to CCCC by BACS Account Name: Clergy Correspondence Chess Club
Bank: Santander plc Sort Code: 09-01-56 Account No: 12314006

If you make payments by this method, please use your name as a reference so that our Treasurer can identify the payment, and email him to let him know it's coming and what it's for (eg subs, Scheming Mind, book purchase, etc). Alternatively you could include the purpose of the payment in the reference.

The Secretary holds members' name, address, phone number, and email addresses where provided, their CCCC division, and membership of any team, and the Treasurer holds members' subscription records.