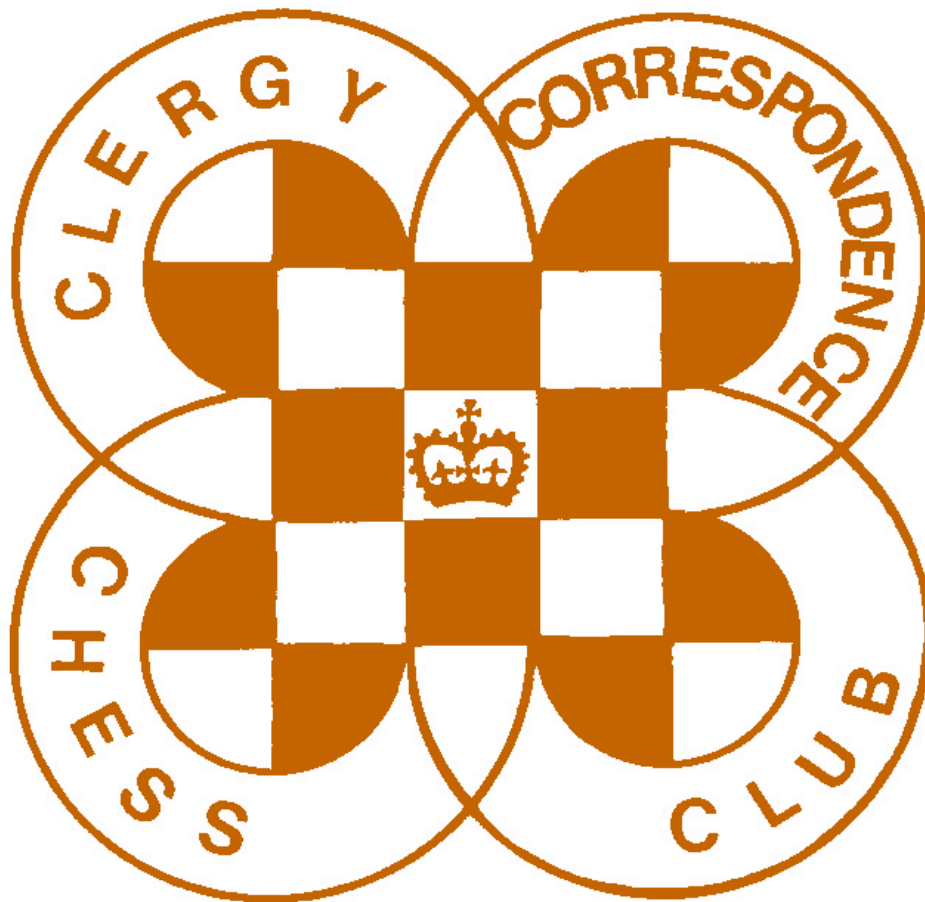


# CHESS minister !

The magazine of the  
**CLERGY CORRESPONDENCE CHESS CLUB**  
[www.iccfengland.org/cccc](http://www.iccfengland.org/cccc)



**GOLDEN JUBILEE ISSUE**  
**June 2017**



# **CHESS Minister!**

**June 2017**

## **Golden Jubilee Issue**

**As this season draws to its close it marks the 50<sup>th</sup> anniversary of our Club. It is difficult to see what we can do to mark this, having published a commemorative issue on our 40<sup>th</sup> anniversary with archive material, though I am including an up to date list of the Champions of 50 years.**

But here is a ditty that Games Editor, Michael Thistlewood has put together to mark the occasion:

**For 50 years the clergy chess  
has shone, but here's the rub:  
Four bishops have we on the board  
But none within our club.**

It is indeed something of an omission that in 50 years we have failed to attract a Bishop to our membership, but when I wrote a chess column for The Universe for a year or so they wanted to start it by arranging for me to play a game against a RC Bishop, but could not find one who played. Perhaps there is something about being a chess player that makes you unsuited to the Episcopate? If anyone would care to write an article on this I would happily include it in a future issue.

### **END OF SEASON**

The current season finishes on 31<sup>st</sup> July. Please ensure that all results are notified to the Secretary by that date. Failure to do this may result in outstanding games being scored as a loss to both players.

Unfinished games can be submitted for adjudication but there is a charge for doing this. Full details of how to submit an adjudication are available from the Secretary on request.

### **ENTERING FOR NEXT SEASON**

If you are presently a League Member and have completed your games this year you will automatically be entered into next season's contest unless you inform the Secretary by 31<sup>st</sup> July.

If you are a non-League Member, or if you failed to complete your games this season then you must tell the Secretary by 31<sup>st</sup> July if you wish to play next season.

### **NEWS OF MEMBERS**

Stanley Hall has moved to 2 Tandle View Court, Rochdale Road, Royton, OLDHAM. OL2 5QT. His phone number remains 0161 628 6103. David Hulme is retiring at the end of July – his new contact details will appear in the next issue.

### **GAMES FOR THE MAGAZINE**

Our thanks to those who have sent in games for publication, and to Michael Thistlewood for preparing them for the magazine. Please continue sending in your games, with analysis where possible. Any game score sent will be considered for publication unless you state that you do not want this, as will any game played on the Scheming Mind web server.

## **RESULTS OF THIS SEASON**

### **David Hulme is once again Champion – Congratulations to him.**

Given that he is retiring from active ministry he will probably be a more formidable opponent in future seasons.

If I get a reasonable number of further results I will email an update so that you can see how others in your Division are doing, though you are welcome to contact me if you need this information (if it affects your promotion or relegation chances for example) before agreeing the result of a game.

I will email the final results and put them on the web site as soon as they are available. If you can't receive email and don't want to wait until the October magazine, please send me a stamped address envelope and I will send you a printed copy.

## **SCHEMING MIND STANDARD CHESS LEAGUE**

We have just begun Round 5 in this year's Scheming Mind Chess League. We won our First Round match comprehensively 9-1, then had three very close matches, losing Round 2 by just 4½- 5½ and drawing Round 3 5-5. Round 4 stands at 5-4 to us with one result outstanding, so the worst that can happen is another drawn match. Once again, if anyone else wishes to join our Team please let the Secretary know (Internet access is required).



## CLERGY CORRESPONDENCE CHESS CLUB RESULTS 2016 / 2017

Division 1	Hu		Sm		St		Ca		Lw		Points	%
Hulme			½*	½	1	1*	1	1*	1	1*	7	88
Smith	½	½*			½	1*	1	1*	1	½*	6	75
Stevenson	0	0	½*	0			½*	½	1*		2 ½ / 7	36
Carlin	0	0	0	0	½	½*			0	½	1 ½	19
Lowe	0	0	0	½	0		1	½*			2 / 7	29
<b>Division 2A</b>	Ya		Ha		Cl		Lx					
Yates			1		1	1	1*	1			5 / 5	100
Hall	0						0				0 / 2	0
Cleaves	0	0									0 / 2	0
Loxton	0	0	1*								1 / 3	33
<b>Division 2B</b>	Wi		Ba		Ny		Pr					
Williamson			1	0			v	v			1 / 2	50
Battye	0	1			1	0	v	v			2 / 4	50
Nye			0	1			v	v			1 / 2	50
Procter	v	v	v	v	v	v						
<b>Division 3</b>	Pa		Th		Jy							
Partridge			1	1*							2 / 2	100
Thistlewood	0	0			0	0					0	0
Joy			1	1*							2 / 2	100

Division 1 is nearly complete and we can confirm that David Hulme is this year's winner. **Congratulations to him.** There remains one game that may decide a relegation issue.

Other Divisions still have a number of results outstanding. Please notify the Secretary by 31st July.



# CLERGY CORRESPONDENCE CHESS CLUB CHAMPIONS

## FIFTY GOLDEN YEARS OF CCCC CHAMPIONS

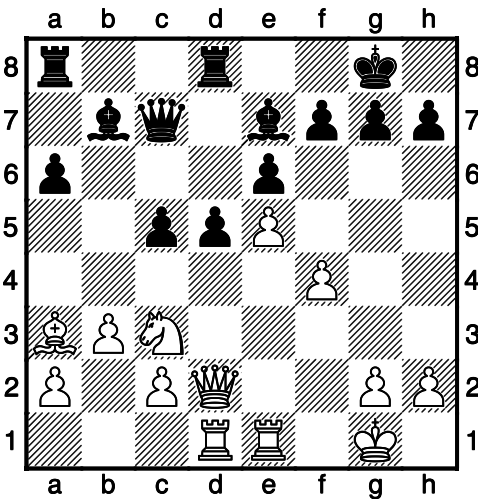
2017	David Hulme	1993	Justin Caldwell Ruggles Fisher
2016	David Hulme	1992	David Hulme
2015	David Hulme	1991	Justin Caldwell David Hulme John Morris
2014	Wilf Alexander	1990	John Morris
2013	David Hulme	1989	John Morris
2012	Justin Caldwell	1988	John Morris
2011	Justin Caldwell David Hulme David Lowe	1987	Ruggles Fisher
2010	Justin Caldwell	1986	Ruggles Fisher
2009	Justin Caldwell David Hulme	1985	Ruggles Fisher
2008	Justin Caldwell Steve Whitmore	1984	Eric Hodgess Roper Brian Stevenson
2007	Justin Caldwell	1983	Brian. Stevenson
2006	Justin Caldwell	1982	Alan Thomas
2005	Justin Caldwell Bert Norris	1981	Alan Thomas
2004	Justin Caldwell	1980	Eric Metcalfe
2003	Justin Caldwell	1979	Eric Bailey Vere Ducker Kenneth Procter Michael Wentworth
2002	David Hulme	1978	Michael Wentworth
2001	Justin Caldwell Steve Whitmore	1977	Graham Johnson
2000	Ruggles Fisher John Morris	1976	Graham Johnson Alan Mackenzie
1999	John Morris	1975	Henry Cullen Graham Johnson
1998	John Morris	1974	Spencer Robertson
1997	John Morris Ruggles Fisher	1973	Matthew Joy
1996	Justin Caldwell John Morris	1972	Alan Mackenzie
1995	Ruggles Fisher	1971	Eric Bailey
1994	Ruggles Fisher John Morris Mike Smith	1970	Kenneth Procter
		1969	Ivor Davies
		1968	Kenneth Procter

The highest number of wins have been scored by

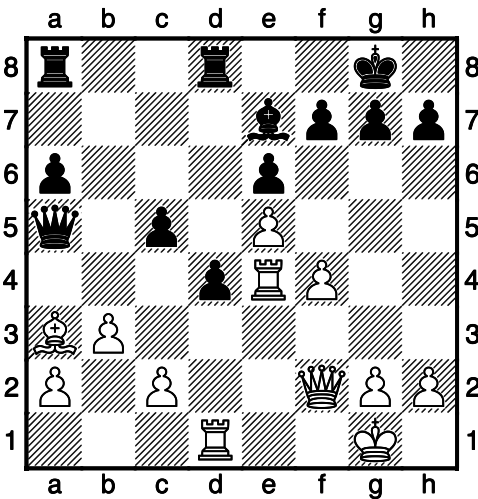
- 14 - Justin Caldwell
- 10 - John Morris
- 9 - David Hulme

**Bruce Carlin (1523) – David Hulme (2211) [B30]**  
**Division 1 - 2016–2017**

1.e4 c5 2.Nf3 Nc6 3.Bb5 e6 4.0-0 Nge7 5.Nc3 a6 6.Bxc6 Nxc6 7.d4 cxd4 8.Nxd4 Qc7 9.Nxc6 bxc6 10.Re1 d6 11.b3 Be7 12.Ba3 0-0 13.f4 c5 14.e5 d5 15.Qd2 Rd8 16.Rad1 Bb7



17.Qf2 d4 18.Ne4 Bxe4 19.Rxe4 Qa5

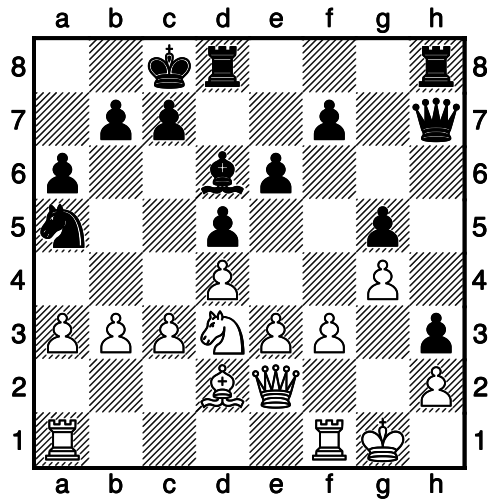


20.Bc1 Qxa2 21.b4 cxb4 22.Rexd4 Rxd4 23.Qxd4 Qxc2 24.Qd7 b3 25.h4 h5 26.Kh2 Rd8 27.Qxe7 Qxd1 28.Ba3 Qd4 29.Qb7 Qxf4+ 30.g3 Rd2+

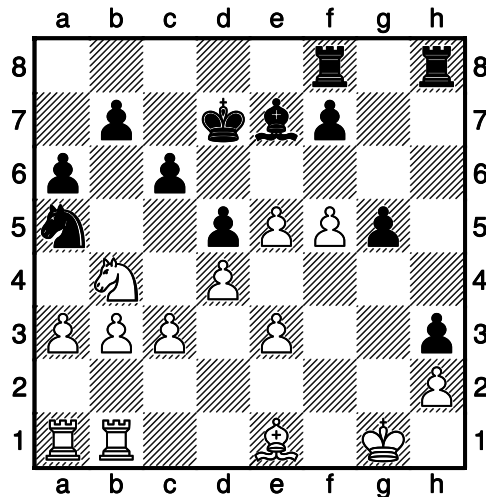
0-1

**David Nye (1766) - Lisa Batty (1733) [D02]**  
**Division 2B - 2016–2017**

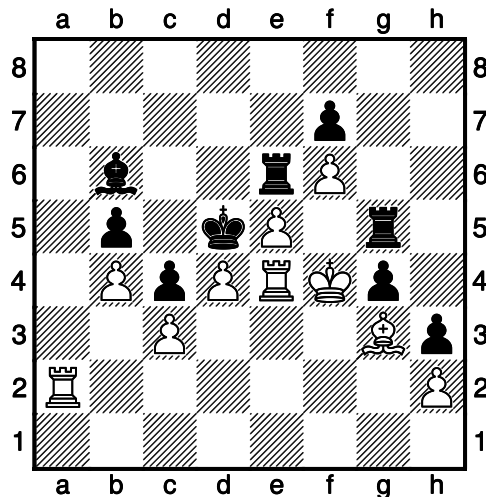
1.Nf3 Nc6 2.d4 d5 3.b3 Bf5 4.e3 Qd6 5.Nc3 a6 6.Be2 Nb4 7.Bd3 Nh6 8.Bxf5 Nxf5 9.0-0 0-0-0 10.Ne5 Qe6 11.a3 Nc6 12.Nd3 g5 13.Ne2 h5 14.Ng3 h4 15.Nxf5 Qxf5 16.Qe2 e6 17.c3 h3 18.g4 Qh7 19.f3 Bd6 20.Bd2 Na5



21.Rfb1 Qg7 22.Nb4 Kd7 23.Nc2 e5 24.Be1 e4 25.fxe4 Qg6 26.e5 Be7 27.Nb4 Qe4 28.Qf2 Rdf8 29.Qf5+ Qxf5 30.gxf5 c6



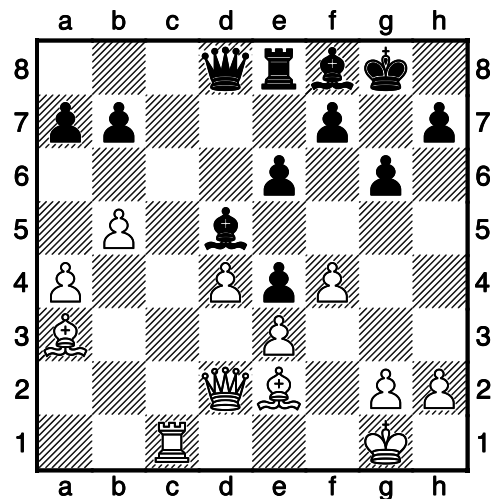
31.f6 Bd8 32.Nd3 b6 33.Bg3 Bc7  
 34.Rb2 Ke6 35.Rf1 Bb8 36.Nc1 c5  
 37.Rf3 Rc8 38.Ne2 c4 39.b4 Nb3  
 40.Be1 b5 41.Kf1 Rh5 42.Ng3 g4  
 43.Rf4 Rg5 44.Ne2 Rh8 45.Bg3  
 Bc7 46.Ke1 a5 47.Rf1 Kd7 48.Kd1  
 Ra8 49.Bf4 Rgg8 50.Kc2 axb4  
 51.axb4 Ke6 52.Bg3 Kd7 53.Nc1  
 Ra1 54.Rd1 Nxc1 55.Rxc1 Ra3  
 56.Rf1 Ke6 57.Rf4 Rg5 58.e4 Ra1  
 59.exd5+ Kxd5 60.Kd2 Ra8  
 61.Ke3 Re8 62.Ra2 Bb6 63.Re4  
 Re6 64.Kf4 1-0



**Michael Thistlewood**  
**(Kendal) - Drew Moller**  
**(Carlisle B) [A00]**  
 Whitaker Cup final, 11.05.2017

**(257) MJT Kendal – Moller**  
**Drew Carlisle B [A00]**  
 Whitaker Cup final, 11.05.2017  
*[Thistlewood, Michael]*

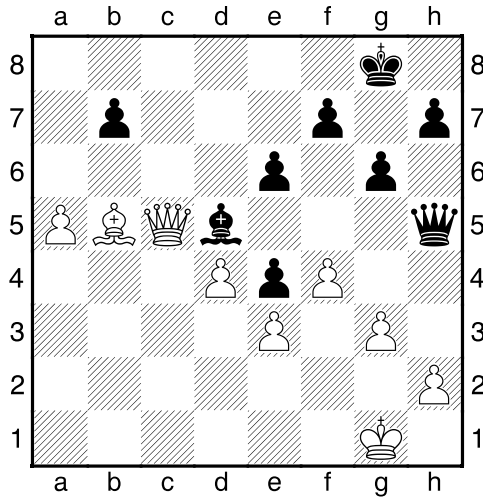
1.f4 c5 2.Nf3 d6 3.e3 Nc6 4.c3 Nf6  
 5.d3 g6 6.Be2 Bg7 7.0-0 Bd7 8.d4  
 Ne4 9.Nbd2 d5 10.Nxe4 dxe4  
 11.Ne5 cxd4 12.Nxc6 Bxc6  
 13.cxd4 0-0 14.a4 e6 15.b4 Bd5  
 16.Bb2 Qd6 17.Ba3 Qd8 18.b5  
 Re8 19.Qd2 Rc8 20.Rfc1 Rxc1+  
 21.Rxc1 Bf8



22.Bxf8 Rxf8 23.Qb4 Qd7 24.a5  
 Rc8 25.Rxc8+ Qxc8 26.Qc5 Qb8  
 27.b6 axb6 28.Qxb6 Qc8 29.Qc5  
 [It looked drawish at this stage]

29...Qd8 30.Qb6 Qe7 31.Qc5 Qd7  
 32.Bb5 Qd8 33.Qb6 Qh4 [I should  
 have played g3 earlier]

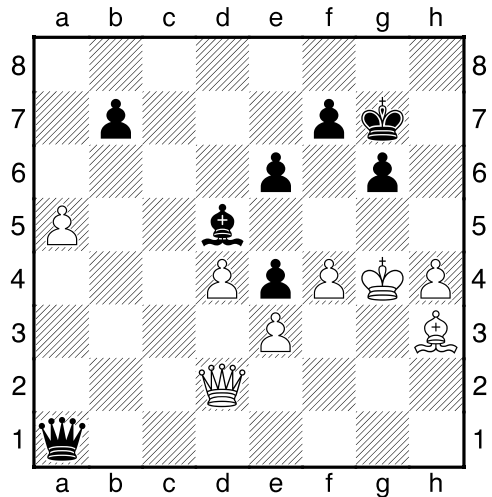
**34.g3 Qh5 35.Qc5** [Diagram



I made this move to protect e3 as I knew the Bishop could block the check. I could then move to protect e3. It took me ages to work this out!!]

**35...Qd1+ 36.Bf1 Qd2 37.Qa3 Qe1 38.Kg2 Qd1 39.Qc3 Qf3+ 40.Kg1 h5 41.Qd2 Qg4 42.Qe2 Qf5 43.h3 Qf6 44.h4 Qd8 45.Qd2 Qd6 46.Qc3 Qd7 47.Kh2 Qa4 48.Qd2 Kg7 49.Kh3 Qa3 50.g4 hxg4+ 51.Kxg4 Qa1 52.Bh3**

[Diagram



Should have been Bg2]

**52...Qg1+ 53.Bg2 Qh2 54.Qf2 Kh6**

**0-1**

The Whitaker Cup is a handicap cup. Each team adds the total of the grades and the difference between them determines the score you need to win. My opponent and I had similar grades. I have never played a game so carefully. I was well behind on time. I am usually too quick (which partly explains why I am bottom of our league!)

I have been playing f4 for about a year and I have had some good games with it (apart from a disaster in the third division this year!)



# CLERGY CORRESPONDENCE CHESS CLUB

(Affiliated to the English Federation for Correspondence Chess)

[www.iccfengland.org/cccc](http://www.iccfengland.org/cccc)



<b>President :</b>	The Revd. Canon Tim Partridge, 54 Thorney Leys, WITNEY. OX28 5LS.	☎ 01993 864926 Email: <a href="mailto:tim.partridge39@tiscali.co.uk">tim.partridge39@tiscali.co.uk</a>
<b>Treasurer :</b>	The Revd. Charles Mason, The Parsonage, School Road, Waltham St. Lawrence, READING. RG10 0NU.	☎ 0118 934 1054 Email: <a href="mailto:revdcom@btinternet.com">revdcom@btinternet.com</a>
<b>Secretary:</b>	The Revd. Bruce Carlin 120 Huddersfield Road, ELLAND. HX5 0EE.	☎ 01422 252711 Email: <a href="mailto:brucecarlin@cooptel.net">brucecarlin@cooptel.net</a>

## Life Members

W. Alexander	T.R. Fisher	D.C. Nye	S. Whitmore
L. Battye	A.J. Foster	T.R. Partridge	M.J. Williamson
D. Boddy	J. Garton	B.E. Shephard	A. Yates
D. Brown	S. Hall	M. Smith	
W.P.B. Carlin	D.S.H. Hulme	B. Stevenson	
R. Cleaves	M. Joy	M.J. Thistlewood	
H. Costello	J.S. Loxton	P.T. Waterfield	

## Subscriptions

Life membership £ 75.50  
Annual membership £ 6.00

Current Membership Year : October 2016 to September 2017

Under the terms of the Data Protection Act we are exempt from registering providing members are aware of, and do not object to, the use of computers in the keeping of membership records. The Secretary holds members' name, address, phone number, fax and email addresses where provided, their CCCC division, and membership of any team, and the Treasurer holds members' subscription records.