

CHESS minister !

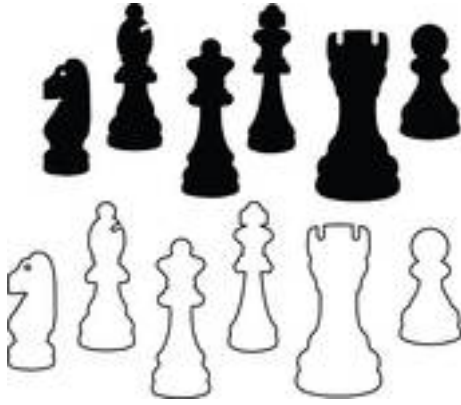
The magazine of the

CLERGY CORRESPONDENCE CHESS CLUB

www.iccfengland.org/cfcc



February 2017



CHESS Minister!

February 2017

CELEBRATIONS

This year marks the CCCC's 50th anniversary but it looks like our Golden Jubilee celebrations will be relatively low key in the absence of any suggestions to the contrary.

In 1987 and 1992 we held midweek residential chess congresses to celebrate our 20th and 25th anniversaries. For our 40th anniversary we had a bumper issue of the magazine with a celebratory supplement.

But I have not detected much enthusiasm for any celebration of our Golden Jubilee.

MAGAZINE

Since we switched to distributing the magazine electronically the few printed issues that we still send had to be similarly on A4 sheets stapled at the side. I now have a program that enables me easily to create a neater booklet format of the magazine (as you will have discovered with the last issue) albeit at the cost of a slightly smaller typeface. I trust it is still adequately readable for those of you who take the magazine in this format, but it does also reduce the risk of our going over the standard letter post thickness.

CURRENT SEASON

All games should now be underway in the current season even if you are taking advantage of the staggered starting dates allowed to electronic players. If there are any games not yet underway please do get them started now.

FAREWELL

We bid farewell to Mark Northcott who died last October. His obituary appears elsewhere in this issue.

We also note the death of the actor John Hurt, whose father Arnould was a long standing member of the Club.

GAMES

We are very short of games for the magazine, especially annotated ones which are much more interesting to our readers. Please, if anyone can spend a few minutes annotating a game that they have played, please do so and submit it for the magazine. As always, my thanks to Michael Thistlewood who edits and prepares the games for the magazine. He does an excellent job but can only work with the material you send in.

EFCC AND OUR WEB SITE

The English Federation for Correspondence Chess web site is undergoing a major overhaul at the moment. As a result we are temporarily unable to edit our own web pages which they kindly host for us. This is being resolved and I am in touch with their new webmaster and hopefully it will all be sorted soon, but bear with us if our site is not as up to date as it might be.

SCHEMING MIND STANDARD CHESS LEAGUE

We are in a Division much more suited to our level of ability this season and have won our First Round match and are well on the way to winning our Second Round match also. Congratulations to our Team in this.

DRUGS AND CHESS

When I wrote a series of articles on chess for *The Universe* earlier this century I recall writing one on the vexed issue of whether chess could be recognised as a sport by the International Olympic Committee (IOC). At the time the IOC argued (and still does) that chess was not a physical sport, an argument somewhat supported when a Scottish Team member turned up to play at the Olympiad with a broken wrist and duly scored 7/10. But as part of this process FIDE, the chess governing body, was forced to adopt the IOC drugs policy, despite arguing strongly that the kind of drugs that would enhance an athlete's performance would probably have the opposite effect in a cerebral sport such as chess, seemingly overlooking the fact that this actually strengthened the IOC's position that chess was not a physical sport and so should not be admitted in the first place!

However, recently it has emerged that a drug used to treat narcolepsy as well as one that treats ADHD (Attention Deficit Hyperactivity Disorder) both boosted chess players' performance by around 13% when tested by a series of questionnaires and a game against the Fritz 12 chess program. More disturbingly caffeine was found to increase performance by around 9% (he writes as he reaches for the cup of coffee on his desk ...). Interestingly in this era of tighter time controls the drugs actually made the players play more slowly, suggesting that the drugs improved a player's ability to spend more time on decision making and calculation rather than enhancing decision-making itself.

As yet no one has actually tested positive for any of these banned substances, not even the Russians, but a professor of psychiatry from Mainz University who led the studies is calling for rigorous doping controls in chess competitions. While this may be possible in major championships I cannot see there being either the money or the infrastructure to police this in Club chess, though as I recall from my days some years ago playing for the Barnsley Club one would as often have a surely performance inhibiting pint of beer by the board as a cup of coffee! And as with most rules it is of course entirely unenforceable in Correspondence Chess ...

CHESS SELFIES

Many of us have never met, and since email has largely taken over from phone as a means of communication some of us may not even have spoken. So it was suggested that we might include a series of photos of members, either playing chess or poring over a correspondence game. If you have someone who can take it for you that is great, but otherwise take a 'selfie'.

And here, illustrated by a self-portrait (who said 'selfies' were a new idea?) rather than a photo is ...



MATTHEW ASKEY

Matthew writes,

I've been in my current role of SOUTHWELL Minster School Chaplain for nearly 4 years. Before that I was curate at Elland in West Yorkshire.

My interests are in art and faith, I am an artist and art educator. Before training at Mirfield I was an art teacher. I am also interested in contemporary literature, poetry and music. I love Jazz and play the saxophone (in church when I can too!). I play most of the saxes but prefer the soprano saxophone.

MARK NORTHCOTT

Nick Procter writes:

I was sorry to hear of Mark's death; I knew him as he and I were in the same parish, St John's Leyland, for a few years (him retired and me as SSM curate) - but we hadn't been in contact for over 12 months since I moved to my new parish. As is often the case we can know only something of a person's life and so I wouldn't want to write an obituary, but I hope this information may help along with other contributions.

It was Mark who persuaded me to join CCCC in 2009. He attempted to get me involved in other activities such as carrying his bags whilst he busked, driving him for the day to North Wales so he could busk there, and helping him to paint some local church railings, but I resisted these invitations.

I knew him as retired clergyman, friend, a chess player and a musician (he enjoyed singing, playing the piano and the saxophone). He took up the saxophone in later years, and would busk to raise money for a local cancer charity - at one time he had a regular spot outside Boots in Leyland, but I know he also busked in Chorley, Southport, and I think in Rhyll. He was good friends with other local musicians, and would arrange an annual musical evening at St John's where his friends (& family) performed. In October 2014 he celebrated his 50th year since ordination and held one of these events. His widow, Betty, is herself an accomplished classical pianist and was among the musicians who played on such occasions.

I understand that he grew up in Croydon, & I think he was himself the son of a clergyman. During his ministry I know he served mostly in Blackburn Diocese, but also for a time in Scotland. He was for some time a representative for CMJ. He supported other charities, I think one was for musicians who had fallen on hard times.

These are only very limited snapshots, but they may help you. I know he had several children and grandchildren but wouldn't know more than that. His death was notified in The Leyland Guardian so there may be some helpful detail on their website.

Lisa Battye adds:

I will remember Mark with appreciation for his life and ministry. His work for CMJ was a part of my formative years when, together with his first wife, Cynthia, he welcomed me to CMJ meetings in his home in Prestwich when I was a teenage student. One of the things I will always carry with me from those days is the song he wrote to the tune of HaTikvah, the Israeli national anthem. He was enthusiastic, and his passion for Israel and all things Jewish left its mark on me. Many years later he visited my larger church, St Paul's, and we played various games of chess by internet. R.I.P. Mark - and thank you.

His son in law gave a tribute at the funeral in which he remembered Mark as someone who liked to live life in a light hearted way and read this limerick - which may have been composed by the 2 of them:

Said Mark in the company mess
Of a man in a very strange dress
Be he muslim or jew
Or sikh or hindu
He's a friend if he can play chess

Mark's own life story which he wrote to be read at his funeral is too long to reproduce here, but will hopefully be on the CCCC website once we have sorted this (see Editorial).

CCCC ACCOUNTS

Income and Expenditure Account for year ended 31.7.16

	<u>2015/16</u>	<u>(2014/15)</u>		<u>2015/16</u>	<u>(2014/15)</u>
<u>Income £</u>			<u>Expenditure £</u>		
Subscriptions	24.00	(18.00)	Secretary's Expenses	13.10	
Bank Interest	8.33	(8.27)	Treasurer's Expenses	1.64	(0.54)
Scheming Mind payments	3.00	(6.00)	EFCC Affiliation	15.00	(15.00)
			Surplus for year	5.59	(16.73)
	<hr/>	<hr/>		<hr/>	<hr/>
	35.33	(32.27)		35.33	(32.27)

Balance Sheet as at 31.7.16

	<u>£</u>
Balances brought forward	1125.42
Add: surplus for year	5.59
TOTAL NET ASSETS	<hr/> 1131.01
<u>Represented by:</u>	
Santander UK plc Business Account	15.51
Santander UK plc Deposit Account	2.96
NS&I Investment Account (Life Membership)	1118.54
Less: prepayments	(6.00)
	<hr/> 1131.01

Treasurer's Report on the 2015/16 Accounts

I am glad to have been proved wrong in my prediction of a deficit for this year. Our Secretary Bruce Carlin has had to claim some expenses, having exhausted his stock of stamps and stationery which he bought with great forethought three years ago at an advantageous price, but we still managed to stay in the black to the tune of £5.59.

I do not think the other figures call for much comment. Savings interest rates, as we all know, remain obstinately low, the very small increase in the amount received merely reflecting the increase in capital. On the expenditure side, our EFCC affiliation fee was again unchanged.

The Club's finances continue to be very sound: our total assets represent a very comfortable reserve in terms of typical annual expenditure, thanks in part to the high proportion of members accepting electronic delivery, which keeps communication costs low. I did not think there was any need to increase our subscription rates for 2016/17, so this is their third year at the current level.

At the end of the financial year 2015/16 the value of the Life Membership Fund stood at £44.74 per Life Member (previous year: £44.41). No withdrawals were required.

At the time of writing (January 2017) all subs are up to date. Thank you for paying promptly, which makes my job easier.

Charles Mason – Hon Treasurer, CCCC

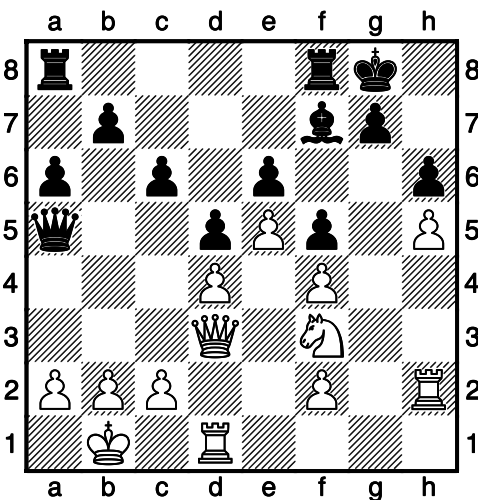
David Lowe – Opponent SCCA [C06]

Scheming Mind 2016

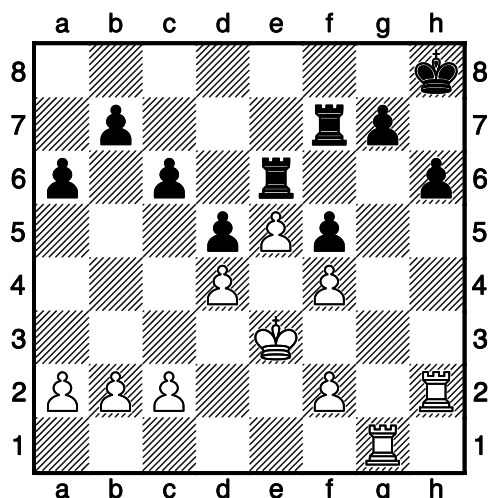
1.e4 e6 2.d4 d5 3.Nc3 Nf6 4.Bg5
Be7 5.Bxf6 Bxf6 6.e5 Be7 7.Qg4
0-0 [I'm wondering if his castling, in
this case, might make his King
more vulnerable, especially if I
castle on the Queen side and
manage to advance the h-pawn.]

8.Bd3 f5 9.Qf3 Nc6 10.Nce2 Nb4
11.Nf4 Nxd3+ 12.Qxd3 c6 13.0-0-
0 Bg5 [It's still too soon to develop
the Knight, even though it means
doubling pawns if he exchanges.]

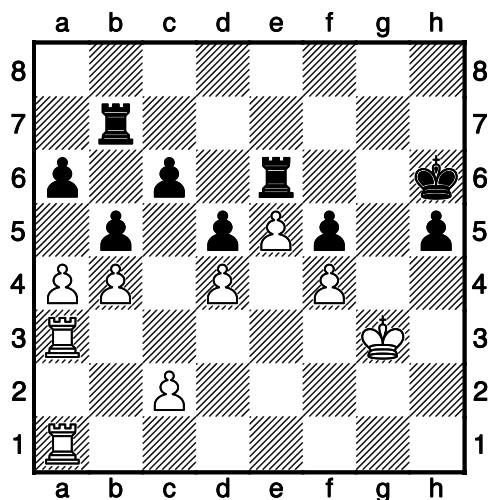
14.g3 Bxf4+ 15.gxf4 Bd7 16.Nf3
h6 17.h4 Be8 18.h5 Bf7 19.Rh2
Qa5 20.Kb1 a6



21.Rg1 Kh7 22.Nh4 Qc7 23.Qg3
Bxh5 24.Ng6 Bxg6 25.Qxg6+ Kh8
26.Qxe6 Qf7 27.Qxf7 Rxf7 28.Kc1
Rg8 29.Kd2 Re8 30.Ke3 Re6



31.Kf3 Kh7 32.a4 g6 33.b4 b5
34.Ra1 Rc7 35.Rh3 h5 36.Kg2
Rb7 37.Rha3 Kh6 38.Kg3 g5
39.fxg5+ Kxg5 40.f4+ Kh6

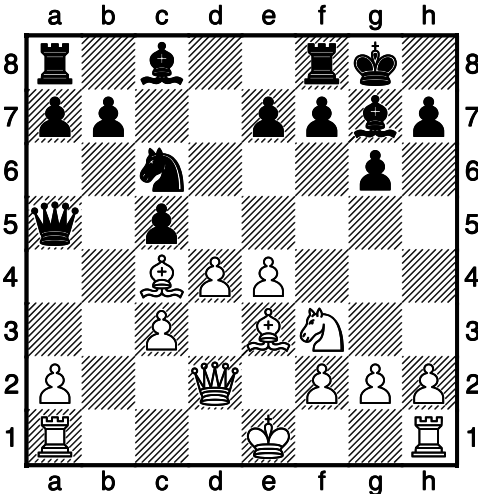


41.Kh2 h4 42.axb5 axb5 43.Ra8
Kh5 44.Rg1 Rbe7 45.Rg5+ Kh6
46.Rh8+ Rh7 47.Rxh7+ Kxh7
48.Rxf5 [Black resigned having lost
a pawn.]

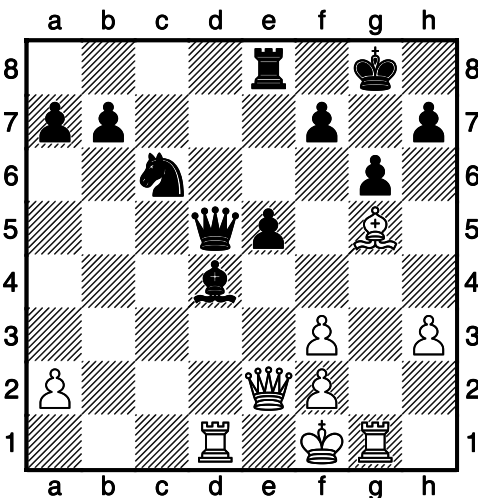
1-0

**Andrew Yates - Mike Smith
[D86] - 2015-2016 - Div. 1**

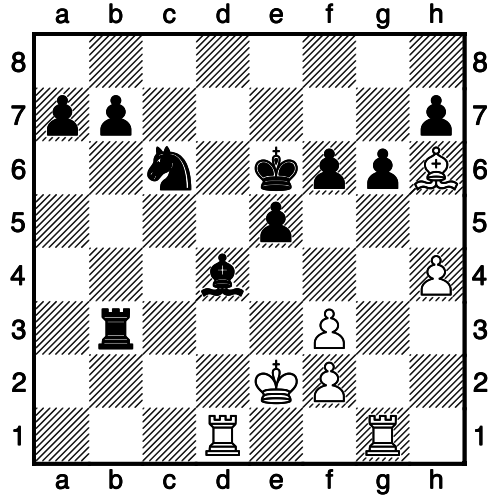
1.d4 Nf6 2.c4 g6 3.Nc3 d5 4.cxd5
Nxd5 5.e4 Nxc3 6.bxc3 Bg7
7.Bc4 0-0 8.Be3 c5 9.Qd2 Nc6
10.Nf3 Qa5



11.Rd1 Bg4 12.h3 Bxf3 13.gxf3
Rfd8 14.Bd5 cxd4 15.cxd4 Rxd5
16.exd5 Qxd5 17.Rg1 Rd8 18.Qe2
Bxd4 19.Kf1 e5 20.Bg5 Re8



21.h4 Qe6 22.Rg3 f6 23.Be3 Kf7
24.Qb5 Re7 25.Qb3 Rd7 26.Ke2
Qxb3 27.axb3 Rd5 28.Bh6 Ke6
29.Rg2 Rb5 30.Rgg1 Rxb3



31.Rb1 Rxb1 32.Rxb1 b6 33.Rc1
Bc5 34.Be3 Nd4+ 35.Bxd4 exd4
36.f4 Kf5 37.Kf3 a5 38.Rc4 d3
39.Ra4 Bb4 40.Ra2 d2 41.Ke2
Ke4 42.Rc2 Kd5 43.Rc7 a4 44.f5
a3 45.Rxh7 a2 46.Ra7 Ba5

0-1

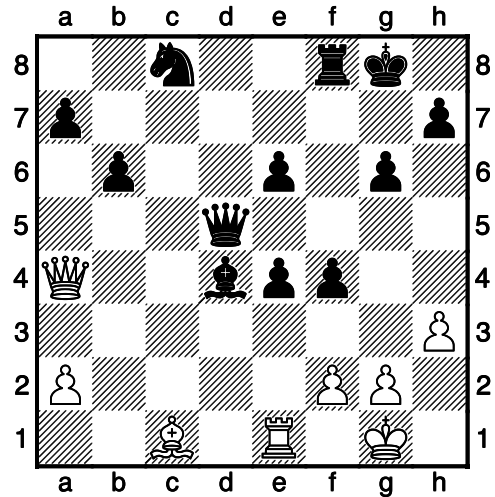
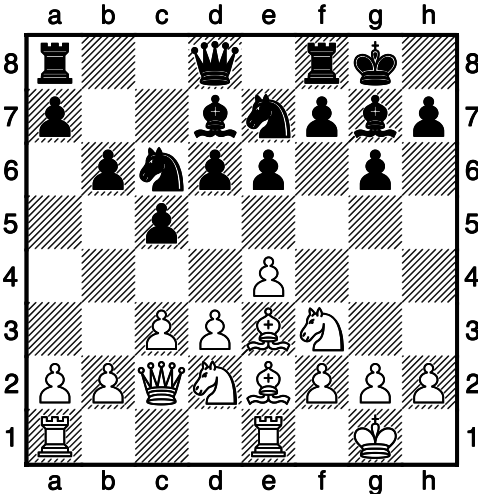
Thistlewood - Hall [B00]

1.f4 d5 2.Nf3 Nf6 3.e3 Bf5 4.Be2
Nc6 5.0-0 Qd6 6.d3 0-0-0 7.Bd2
Kb8 8.Nc3 h6 9.Nb5 Qd7 10.a4 a6
11.Nbd4 Nxd4 12.Nxd4 h5
13.Nxf5 Qxf5 14.b4 e5 15.fxe5
Qxe5 16.a5 Ng4 17.Bxg4 hxg4
18.g3 Bd6 19.Qe1 Rxh2 20.Kxh2
Qh5+ 21.Kg2 Qh3+ 22.Kg1 Rh8
23.Rxf7 Qh1+ 24.Kf2 Rh2#

0-1

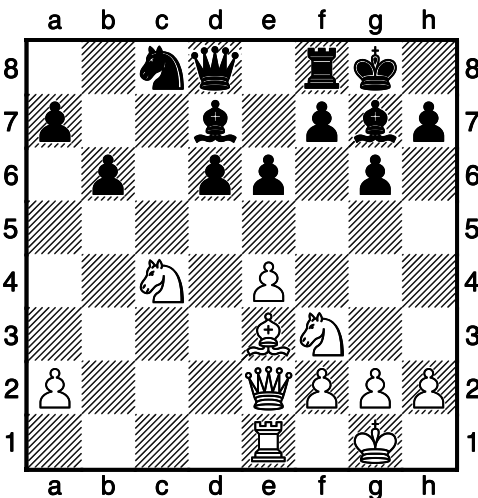
Thistlewood – Loxton [B00]

1.e4 c5 2.Nf3 Nc6 3.d3 e6 4.Be2
d6 5.0-0 g6 6.c3 Bg7 7.Be3 Nge7
8.Re1 Bd7 9.Nbd2 0-0 10.Qc2 b6



0-1

11.d4 cxd4 12.cxd4 Rc8 13.Rac1
Nxd4 14.Qd3 Nxe2+ 15.Qxe2
Bxb2 16.Rxc8 Nxc8 17.Nc4 Bg7



18.e5 Bb5 19.Qc2 Bxc4 20.Qxc4
dxe5 21.Bg5 f6 22.Be3 Qd5
23.Qa4 f5 24.h3 e4 25.Nd4 f4
26.Bc1 Bxd4

Games Editor's note:

The first game was sent to me with notes so many thanks.

I can't remember the season of my two games but I had kept them on my computer.

The game between Andrew Yates and Mike Smith I took from Scheming Mind.

So what I suppose I am saying is please send in your games and if possible with notes!

Michael Thistlewood

CLERGY CORRESPONDENCE CHESS CLUB RESULTS 2016 / 2017

Division 1	Hu	Sm	St	Ca	Lw	Points	%
Hulme							
Smith				1 1*	1		
Stevenson				½			
Carlin		0 0	½*				
Lowe		0					
Division 2A	Ya	Ha	Cl	Lx		Points	%
Yates			1 1				
Hall				0			
Cleaves	0 0						
Loxton		1*					
Division 2B	Wi	Ba	Ny	Pr		Points	%
Williamson				v v			
Battye				v v			
Nye				v v			
Procter	v v	v v	v v			VOID	
Division 3	Pa	Th	Jy				
Partridge		1 1*					
Thistlewood	0 0		0				
Joy		1					

All games should now be underway and if anyone has not started any games please do so as soon as possible to ensure that they are completed in time.

Please let me have your results as you complete your games. I will aim to post all results on our Facebook page so you can keep up to date with these as they happen.

CLERGY CORRESPONDENCE CHESS CLUB

(Affiliated to the English Federation for Correspondence Chess)

www.iccfengland.org/cfcc



- President :** The Revd. Canon Tim Partridge, 54 Thorney Leys, WITNEY. OX28 5LS. ☎ 01993 864926
Email: tim.partridge39@tiscali.co.uk
- Treasurer :** The Revd. Charles Mason, The Parsonage, School Road, Waltham St. Lawrence, READING. RG10 0NU. ☎ 0118 934 1054
Email: revdcom@btinternet.com
- Secretary:** The Revd. Bruce Carlin 120 Huddersfield Road, ELLAND. HX5 0EE. ☎ 01422 252711
Email: brucecarlin@cooptel.net

Life Members

W. Alexander	T.R. Fisher	D.C. Nye	S. Whitmore
L. Batty	A.J. Foster	T.R. Partridge	M.J. Williamson
D. Boddy	J. Garton	B.E. Shephard	A. Yates
D. Brown	S. Hall	M. Smith	
W.P.B. Carlin	D.S.H. Hulme	B. Stevenson	
R. Cleaves	M. Joy	M.J. Thistlewood	
H. Costello	J.S. Loxton	P.T. Waterfield	

Subscriptions

Life membership £ 75.50
Annual membership £ 6.00

Current Membership Year : October 2016 to September 2017

Under the terms of the Data Protection Act we are exempt from registering providing members are aware of, and do not object to, the use of computers in the keeping of membership records. The Secretary holds members' name, address, phone number, fax and email addresses where provided, their CCCC division, and membership of any team, and the Treasurer holds members' subscription records.