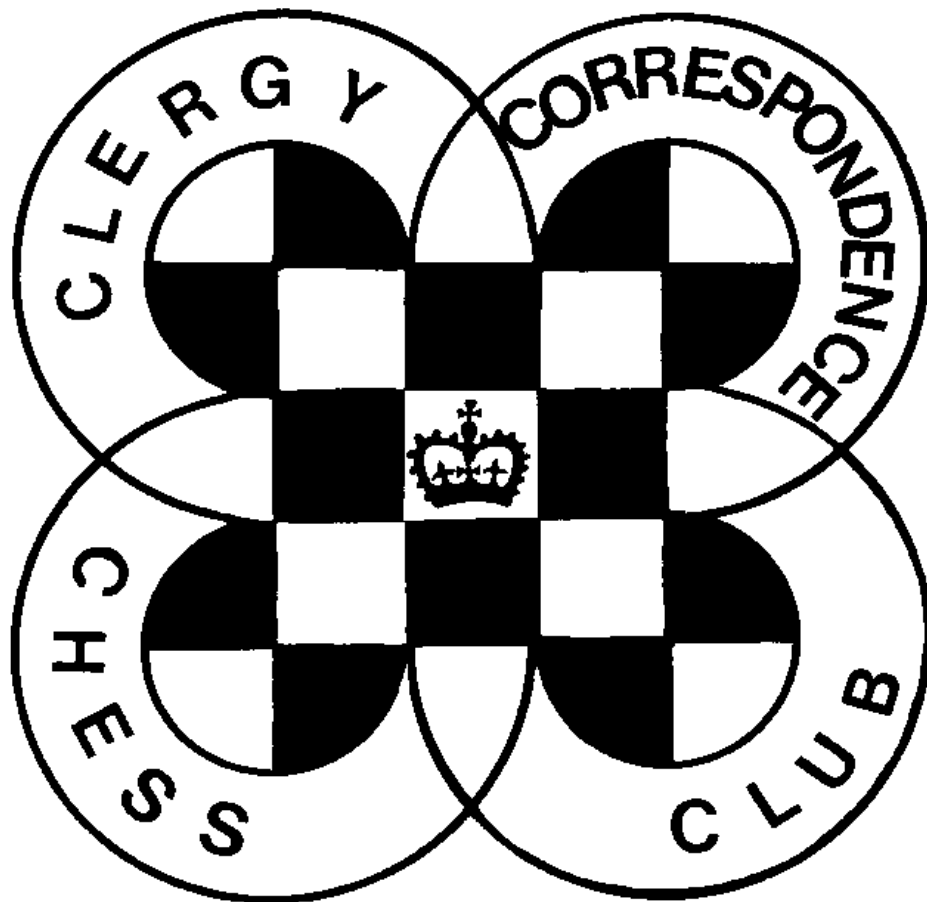


# **CHESS minister !**

The magazine of the

**CLERGY CORRESPONDENCE CHESS CLUB**

[www.bfcc-online.org.uk/memberorg/cccc](http://www.bfcc-online.org.uk/memberorg/cccc)



**June 2016**

# CLERGY CORRESPONDENCE CHESS CLUB

(Affiliated to the English Federation for Correspondence Chess)

[www.bfcc-online.org.uk/memberorg/cccc](http://www.bfcc-online.org.uk/memberorg/cccc)



<b>President :</b>	The Revd. Canon Tim Partridge, 54 Thorney Leys, WITNEY. OX28 5LS.	☎ 01993 864926 Email: <a href="mailto:tim.partridge39@tiscali.co.uk">tim.partridge39@tiscali.co.uk</a>
<b>Treasurer :</b>	The Revd. Charles Mason, 10a Marshalls Road, BRAINTREE. CM7 2LL.	☎ 01376 322840 Email: <a href="mailto:revdcom@btinternet.com">revdcom@btinternet.com</a>
<b>Secretary:</b>	The Revd. Bruce Carlin 120 Huddersfield Road, ELLAND. HX5 0EE.	☎ 01422 252711 Email: <a href="mailto:brucecarlin@cooptel.net">brucecarlin@cooptel.net</a>

## Life Members

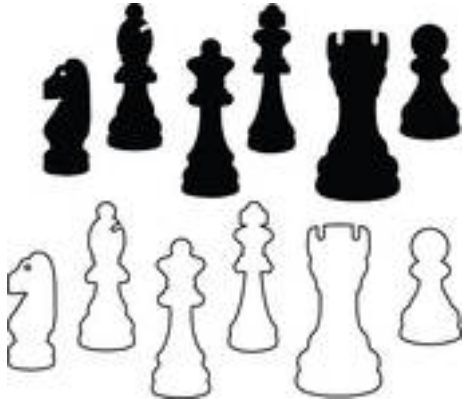
W. Alexander	T.R. Fisher	W.M. Northcott	P.T. Waterfield
L. Battye	A.J. Foster	D.C. Nye	S. Whitmore
D. Boddy	J. Garton	T.R. Partridge	M.J. Williamson
D. Brown	S. Hall	B.E. Shephard	A. Yates
W.P.B. Carlin	D.S.H. Hulme	M. Smith	
R. Cleaves	M. Joy	B. Stevenson	
H. Costello	J.S. Loxton	M.J. Thistlewood	

## Subscriptions

Life membership £ 75.50  
Annual membership £ 6.00

Current Membership Year : October 2015 to September 2016

Under the terms of the Data Protection Act we are exempt from registering providing members are aware of, and do not object to, the use of computers in the keeping of membership records. The Secretary holds members' name, address, phone number, fax and email addresses where provided, their CCCC division, and membership of any team, and the Treasurer holds members' subscription records.



# **CHESS Minister!**

## **June 2016**

### **END OF SEASON**

**The current season finishes on 31<sup>st</sup> July.**

**Please ensure that all results are notified to the Secretary by that date. Failure to do this may result in outstanding games being scored as a loss to both players.**

Unfinished games can be submitted for adjudication. Details of how to do this are available from the Secretary, but note that there is a charge for games submitted for adjudication.

Please note that I shall be away for the second half of July, returning home on 2<sup>nd</sup> August. Any results notified by 3<sup>rd</sup> August will be deemed to be in one time. If you want to know other results from your Division, I will not necessarily be able to inform you of that though hopefully I will be connected by email most days – we are only in Europe. Or you could join our **Facebook Group** and keep in touch that way – see next page.

### **ENTERING FOR NEXT SEASON**

If you are presently a League Member and have completed your games this year you will automatically be entered into next season's contest *unless you inform the Secretary by 31<sup>st</sup> July.*

If you are a non-League Member, or if you failed to complete your games this season then *you must tell the Secretary by 31<sup>st</sup> July if you wish to play next season.*

### **RESULTS OF THIS SEASON**

If I get a reasonable number of further results I will email an update so that you can see how others in your Division are doing, though you are welcome to contact me if you need this information before perhaps agreeing the result of a game.

I will email the final results and put them on the web site as soon as they are available. If you can't receive email and don't want to wait until the October magazine, please send me a stamped address envelope and I will send you a printed copy.

### **WELCOME & CHANGES OF ADDRESS**

Welcome to Ian Field who is joining us for the new season. Ian is a Baptist minister living near Milton Keynes and will hopefully be joining the League for the new season in October. 9 Wellingborough Road, OLNEY. MK46 4BJ. ifield4862@gmail.com.

Ruggles Fisher has a new email address – rugglesfisher@outlook.com.

David Boddy has retired and moved to 25 Mount Pleasant, Mill Road, Peasenhall, SAXMUNDHAM. IP17 2NL.

## **GAMES FOR THE MAGAZINE**

Our thanks to those who have sent in games for publication, and to Michael Thistlewood for preparing them for the magazine. Please continue sending in your games, with analysis where possible. Any game score sent will be considered for publication unless you state that you do not want this, as will any game played on the Scheming Mind web server.

## **SCHEMING MIND STANDARD CHESS LEAGUE**

In the latest season of the Scheming Mind League we had mixed fortunes, winning 3 and losing 3 of our six matches, placing us mid-table. We look forward to entering again in the new Season which should begin later this year. If anyone else wishes to join our Team please let the Secretary know.



## **CCCC FACEBOOK GROUP**

CCCC now has a Group on Facebook to help us keep in touch with each other. The Group is new and in need of development but part of that is in the hands of the members.

Although I don't think Facebook is a practical way of actually playing our games, I am quite happy for members to notify me of results via this Group and if results generally are posted in the group then members will be more up to date with what is happening in their Division.

The Group is a Closed Group so that we can restrict it to CCCC members and perhaps people involved in correspondence chess through the ECCF to which we are affiliated. Just search for Clergy Correspondence Chess Club in the Facebook search box and the group should come up. Ask to join and when I am next on I will approve your membership.

## **WINDOW ENVELOPES**

Now that I no longer live in a Vicarage with plenty of spare space I am having to cut down on what I store. No one has asked me for window envelopes for a few years now as I don't suppose many people still play by post, but if anyone does want my remaining stock (over 300) I am happy to send them for the cost of postage (£2.85). If no one takes up this offer I will assume that they are no longer wanted and they will go for recycling. Contact the Secretary.

## **ACCOUNTS**

Our Accounts are normally printed in the February issue but as I was going away that month I needed to print it early in the month and so was unable to include them. They are in this issue instead, but we will return to printing them in February in future.

## MEMBERS' PHOTOS

Two members are featured this issue, but still no photo from the member whose idea it was in the first place! If you can send us a photo, playing chess or not, and a few words about yourself, we will feature you in a future issue.

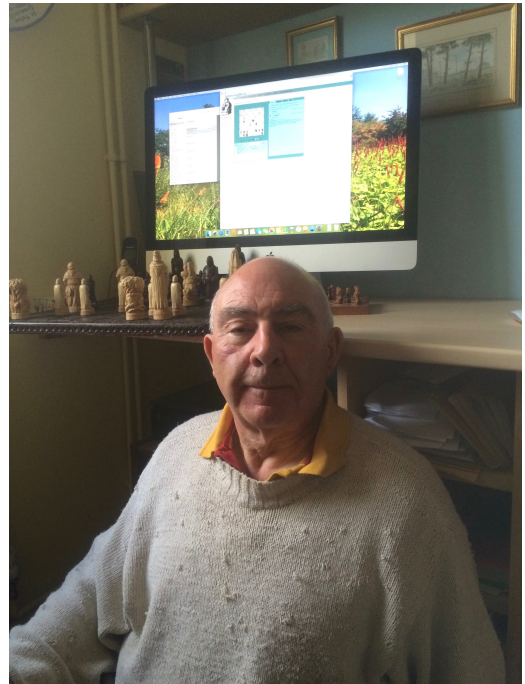
**David Lowe** is pictured in front of a Scheming Mind game against Richard Cleaves, a game against Nick Procter on the big board and a game against Tim Partridge on the little board.

I learnt to play chess at school but Luton Town Football Club was a more important preoccupation. Then at Kelham Theological College I played a little more seriously. During my first curacy near Chesterfield I started a football club called the WASPS (Wingerworth Amateur Soccer Players). My chess rarely had the same sting and in fact I didn't play again for another 20 years.

Following another curacy in Sheffield, a team ministry in the mining area of NE Derbyshire, then a parish in Bury St Edmunds, I took up chess again in my Leiston parish. I also played on exercise with the TA and ACF (please don't pass on this information to the Commanding Officers). I recall one interesting late night game against a Sikh medical officer. REME were kind enough to make me an improvised board, which I still treasure.

In my Felixstowe parish I met Kenneth Wakefield at the Rotary Club. Kenneth, a retired priest who has since died, was a CCCC member and introduced me to it. Since retiring I have played games on the internet against members of the University of the Third Age. Most recently I've been playing 10 minute chess in a U3A league using the CHESS site and last month I was top of division 2. The only game I lost was against a division 1 player I challenged by mistake!

As well as playing chess I still support Luton Town, even though these days it's almost embarrassing to mention them! May I thank Bruce and all who organise CCCC. It gives me great enjoyment as well as late nights.



**Stanley Hall** is pictured (left) with Bruce Carlin after playing one of their CCCC games at Stanley's home. Stanley is a Lancastrian, perhaps more proud of having played Lancashire League cricket for Bacup than for the Sierra Leone National Team! The latter came during 12 years spent as a Missioner and Lecturer in accountancy in West Africa.

Returning to England he lectured at Bradford Technical College before being ordained to the Methodist Ministry in 1981, serving in Royton & Ashton before retiring in 1992.

Stanley is on the verge of turning 90, not quite our oldest member, but certainly our oldest one still actively playing in the League.

## CCCC ACCOUNTS

### Income and Expenditure Account for year ended 31.7.15

	<u>2014/15</u>	<u>(2013/14)</u>		<u>2014/15</u>	<u>(2013/14)</u>
<u>Income £</u>			<u>Expenditure £</u>		
Subscriptions	18.00	(38.25)	Treasurer's Expenses	0.54	(1.03)
Bank Interest	8.27	(8.19)	EFCC Affiliation	15.00	(15.00)
Scheming Mind payments	6.00	(7.00)	Scheming Mind sub		(50.00)
Deficit for year		(12.59)	Surplus for year	16.73	
	<u>32.27</u>	<u>(66.03)</u>		<u>32.27</u>	<u>(66.03)</u>

### Balance Sheet as at 31.7.15

	<u>£</u>
Balances brought forward	1108.69
Add: surplus for year	16.73
<b>TOTAL NET ASSETS</b>	<u><b>1125.42</b></u>
<u>Represented by:</u>	
Santander UK plc Business Account	27.79
Santander UK plc Deposit Account	2.96
NS&I Investment Account (Life Membership)	1110.21
Less: sundry creditors	(15.54)
	<u><b>1125.42</b></u>

### Treasurer's Report on the 2014/15 Accounts

We are back in surplus this year, now that we are starting to recoup last year's Scheming Mind subscription of £50 from members who are participating in it. Interest on savings continues to be very modest, as we all know, but at least the figure is inching up in the right direction.

For the last two years we have had it very easy on the Expenditure side, with no Secretary's Expenses, but Bruce Carlin has warned me that this is now coming to an end, as he has nearly exhausted his stock of stamps and stationery. It is therefore likely that next year's accounts will show a deficit, but this is no cause for alarm.

The Club's finances continue to be very sound: our total assets represent a very comfortable reserve in terms of typical annual expenditure, thanks in part to the high proportion of members accepting electronic delivery, which keeps communication costs low. Our EFCC (formerly BFCC) affiliation fee was again unchanged.

At the end of the financial year the value of the Life Membership Fund stood at £44.41 per Life Member (previous year: £44.08). No withdrawals were required.

At the time of writing (February 2016) there are subs arrears of £6.00. I hope the person concerned will take the earliest opportunity to attend to this... thank you.

**Charles Mason – Hon Treasurer, CCCC**

## John Loxton – Michael Williamson [B31]

Division 2 – 2014-2015

**1.e4 c5** [A game in which we see that attacking is not winning and the power of the Knight; as well as the value of not giving up! Notes by Michael Williamson.]

**2.Nf3 Nc6 3.d4 d6** [Why not ... cxd?]

**4.d5 Ne5** [Black wishes he could start again! and in move 5 fights back for the initiative]

**5.h3 Nxf3+ 6.Qxf3 g6 7.c4 Bg7 8.Nc3 e6 9.Bf4 Ne7 10.Rc1 0-0** [Black seems to have been given some slack.]

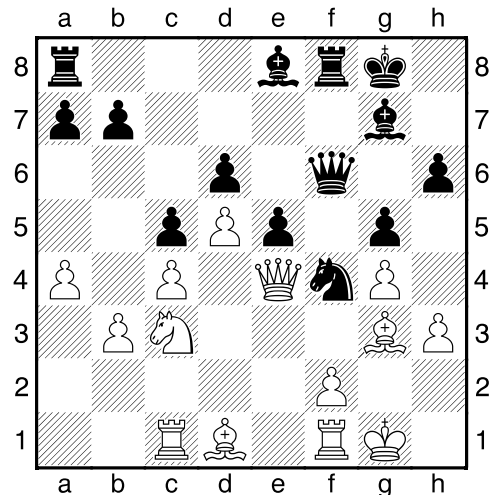
**11.Be2 f5 12.b3 fxe4** [Column open for Black advance.]

**13.Qxe4 e5 14.Bg5 h6** [Black doesn't want Bishop on g5.]

**15.Bh4 g5 16.Bg3 Nf5 17.Bh2 Qf6 18.0-0 Bd7** [Black's aim for Bishop is to zigzag to g6.]

**19.Bd1 Be8 20.g4** [?Bc2 better.]

**20...Nh4 21.Bg3 Ng6 22.a4 Nf4**



Black wants to clear the way for Bg6, then Rae8 and hopes for e4. AT THIS POINT John suggests DRAW. I say no – it's too early to say with so many pieces ready to develop. I also think that Black is winning with initiative etc., but White has a solid position - attacking is not winning!

**23.Kh2 Bg6 24.Qe3 Nd3 25.Rc2 Nb4** [Rae8 better – Knight on b4 a bit sidelined?]

**26.Rd2 Qe7 27.Na2 Nd3** [Wants to use Knight in attack, but Rae8 better to build up forces.]

**28.Rxd3** [Unexpected. I assumed the exchange would be in Black's favour.]

**28...Bxd3 29.Qxd3 e4 30.Qc2 Be5 31.Bxe5 Qxe5+ 32.Kg2** [K on g2 helps to protect f2. The e4 move should have been made earlier. Black still thinks he is winning but

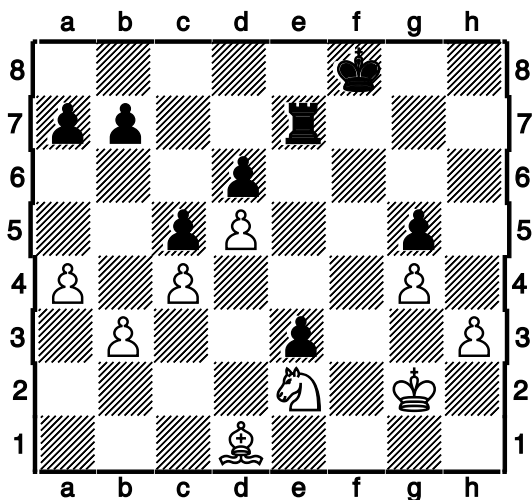
he isn't. The attack has stalled and the f file won't yield.]

**32...Rf4 33.f3 Kg7** [Black worries about White Queen penetrating behind the lines. But Qc3 exf+ would avoid the exchange of Queens.]

**34.Qc3 Re8 35.Qxe5+ Rxe5 36.Nc3** [Nc3 threatens Nb5. Black still has ideas but is not winning..]

**36...e3 37.Ne2** [White's Knight to the rescue and saves the day like Phinehas of old (Numbers 25 and Psalm 106 v.30 – never mind!). Black is devastated.]

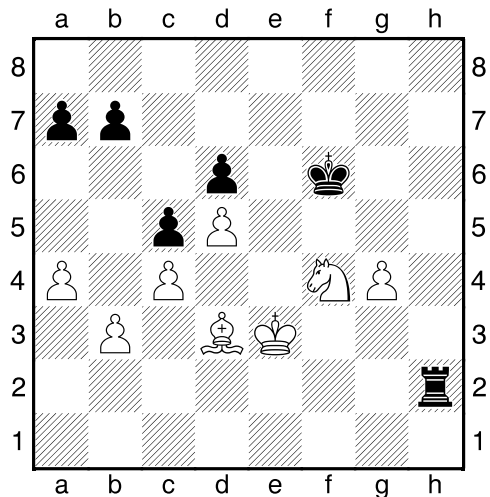
**37...Rf8 38.f4 Re7 39.fxg5 hxg5 40.Rxf8 Kxf8**



**41.Ng3 Kg7** [Black smells whiff of defeat. Can e3 be saved? Threat of Nf5. Kf7 for King to get back into game.]

**42.Be2 Kf6 43.Nf5 Re4 44.Kf3 Ke5** [Could King slide along diagonal? Re7, h7 for Rook free to attack. e3 lost now.]

**45.h4 gxh4 46.Nxh4 Rf4+ 47.Kxe3 Rf7 48.Ng6+ Kf6 49.Bd3 Rh7 50.Nf4 Rh2** [Diagram



Rh2 and a new line of attack, but White Ne6 and has control of g file up to g7. Rook will eventually have to exchange on g8 – any possible chance of draw?]

**51.Ne6 Rb2 52.g5+ Kf7 53.Nd8+ Ke7 54.Nxb7 Rxb3 55.Na5 Ra3 56.Nc6+ Kf7 57.Nxa7 Rxa4** [Black wanted to play Ke6. Why not? Check! is a warning to protect King – if can't you lose by checkmate. But Bishop is pinned so it is not attacking – there is no threat. Rook is also trapped; it cannot move away since it would release Bishop and thereby be in check! – he would check himself! If pinned, Bishop is no threat, there is no



check. We did not know the law about this. John could google it (at a cost) but it's hardly in his interest! I could traipse into Manchester's Central Library, but we were already in July. We would worry Bruce! In the end I decided to accede. Does anyone know the Rule that covers this?]

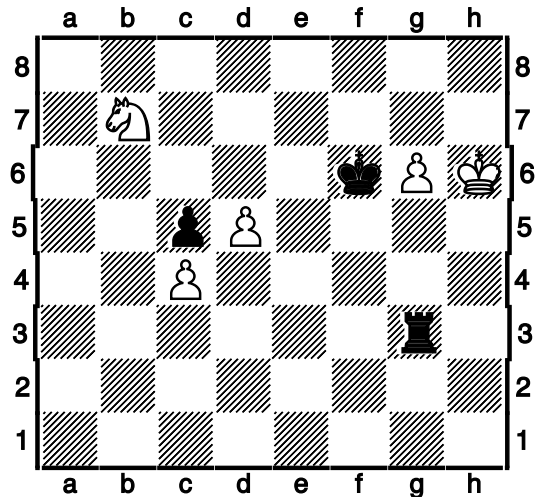
**58.Nb5 Ke7 59.Kf4 Kd7 60.g6 Ra1** [Black cannot avoid Knight returning to support g. Ra8 or a1 in last attempt at draw.]

**61.Kf5 Ke7 62.Nc7 Rh1 63.Kg5 Rg1+** [Black wants to stay close to g file. Avoid White Kf6 and e6 and lose d6. Can Rook keep checking for draw? Black cannot save game now.]

**64.Kh6 Rg3 65.Bf5 Kf6** [Perhaps White go for Queen and exchange Rook for Bishop and Pawn, but White still wins.]

**66.Ne8+ Kxf5** [or perhaps not! Whoops! Now White aim for draw by exchange Knight and Pawn for Rook.]

**67.Nxd6+ Ke5 68.Nb7 Kf6**



**69.Kh5 Rxc6 70.d6 Rg7** [Black must forget quick checks and go for d. White King is isolated.]

**71.Nxc5** [A panic mistake? Two linked passed pawns is a temptations. But aren't Knights wonderful!]

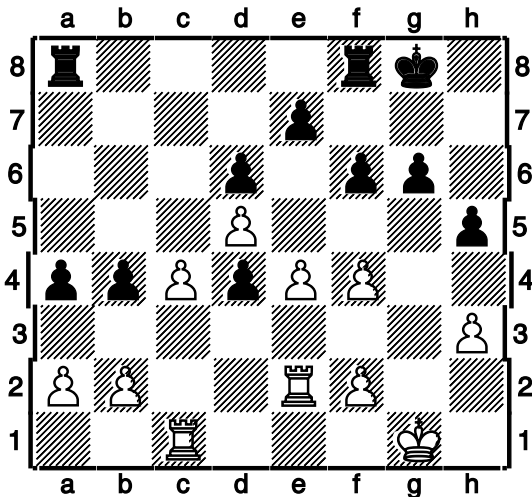
**71...Rg5+**

**0-1**

## Nye – Thistlewood [E91]

Division 2A – 2015-2016

1.Nf3 Nf6 2.c4 g6 3.Nc3 Bg7 4.d4  
d6 5.e4 0-0 6.Bg5 c5 7.d5 Bg4  
8.Be2 a6 9.h3 Bxf3 10.Bxf3 Nbd7  
11.0-0 Qa5 12.Qa4 Qxa4 13.Nxa4  
b5 14.Nc3 b4 15.Nd1 Rfe8 16.Rb1  
Ne5 17.Bxf6 Nxf3+ 18.gxf3 Bxf6  
19.Re1 Be5 20.Re2 a5 21.Ne3 a4  
22.Ng2 Rf8 23.f4 Bd4 24.Ne1 h5  
25.Nf3 f6 26.Nxd4 cxd4 27.Rc1



**27...Rac8** [This looked a bit drawish and yet there was the possibility of an interesting endgame – which took place! You might like to look over it to see where it could have been improved.]

28.f3 Kf7 29.Kf2 Rc7 30.Rd2 Rb8  
31.Rxd4 Kg7 32.Ke3 Rc5 33.h4  
Kf7 34.Rd2 Rbc8 35.Kd3 Rg8  
36.Rg2 Rg7 37.Rcg1 Rg8 38.f5  
Rgc8 39.fxc6+ Kg7 40.Rc1 Rh8  
41.f4 Rg8 42.Kd4 Rgc8 43.Re2

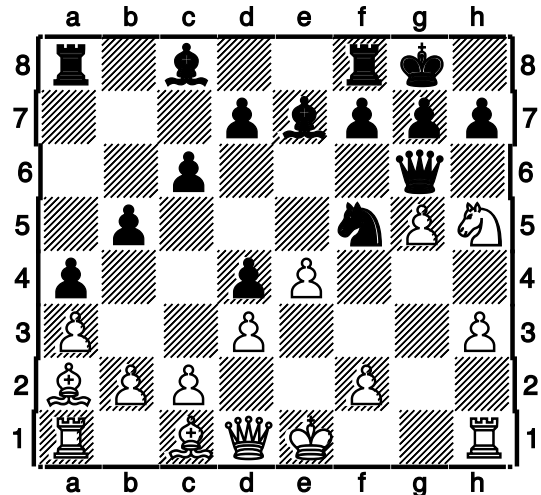
Re8 44.e5 Rcc8 45.Rce1 Kf8  
46.exf6 exf6 47.g7+

1-0

## David Lowe – Lisa Battye [C60]

Division 2b - 2015-2016

1.e4 e5 2.Nf3 Nc6 3.Bb5 Qf6  
4.Nc3 Nd4 5.Nxd4 exd4 6.Ne2  
Bc5 7.d3 c6 8.Bc4 b5 9.Bb3 a5  
10.a3 a4 11.Ba2 Nh6 12.h3 Qg6  
13.Nf4 Qf6 14.Nh5 Qg6 15.g3 0-0  
16.g4 Be7 17.g5 Nf5



18.Nf4 Ne3 19.Nxg6 Nxd1  
20.Nxe7+ Kh8 21.Nxc8 Nxf2  
22.Kxf2 Raxc8 23.Kg3 c5 24.Bd5  
f5 25.gxf6 Rxf6 26.Bg5 Rb6  
27.Rhf1 h6 28.Be7 Rg6+ 29.Kh2  
Rc7 30.Rf7 Rb6 31.Rg1

1-0

**CLERGY CORRESPONDENCE CHESS CLUB  
RESULTS 2015 / 2016**

<b>Division 1</b>	Hu	Sm	St	Wi	Ya	Points	%
Hulme		1				1 / 1	100
Smith	0 <sup>B</sup>				1 <sup>B</sup>	1 / 2	50
Stevenson				1 <sup>B</sup> 1		2 / 2	100
Williamson			0 0 <sup>B</sup>			0 / 2	0
Yates		0				0 / 1	0
<b>Division 2A</b>	Ny	Ha	Ca	Lx	Th	Points	%
Nye		½	1 0 <sup>B</sup>		1 <sup>B</sup> 1	3½ / 5	70
Hall	½ <sup>B</sup>		0 <sup>B</sup> 1	1 <sup>B</sup> 0	1 1 <sup>B</sup>	5½ / 7	79
Carlin	0 <sup>B</sup> 1	1 0 <sup>B</sup>		1 <sup>B</sup>	1 0 <sup>B</sup>	4 / 7	57
Loxton		0 1 <sup>B</sup>	0		1 <sup>B</sup> 1	3 / 5	60
Thistlewood	0 0 <sup>B</sup>	0 <sup>B</sup> 0	0 <sup>B</sup> 1	0 0 <sup>B</sup>		1 / 8	13
<b>Division 2B</b>	Pa	Ba	Lw	Pr	Cl	Points	%
Partridge		0 0 <sup>B</sup>	0 <sup>B</sup> 0	0 <sup>B</sup> 1	0 0 <sup>B</sup>	1 / 8	13
Battye	1 <sup>B</sup> 1		0 0 <sup>B</sup>	1 <sup>B</sup> 1	1 1 <sup>B</sup>	6 / 8	75
Lowe	1 1 <sup>B</sup>	1 <sup>B</sup> 1		1	½ <sup>B</sup> 1	6½ / 7	93
Procter	1 0 <sup>B</sup>	0 0 <sup>B</sup>	0 <sup>B</sup>		0 <sup>B</sup> ½	1½ / 7	21
Cleaves	1 <sup>B</sup> 1	0 <sup>B</sup> 0	½ 0 <sup>B</sup>	1 ½ <sup>B</sup>		4 / 8	50

The results in this table are correct to 18th June 2016.

There is little more than a month left of the current season and hardly any results in from Division 1. Even allowing for our staggered start dates some of these games have been going since October last year and really must be finished, surely.

## Please let me have results

If results are not notified by the end of July they will score as a loss to both players.

I have indicated in the table which player used the Black pieces. Now that we are playing two games against each other this may become an issue in a tie break so please let me know when you report results who was White & Black.