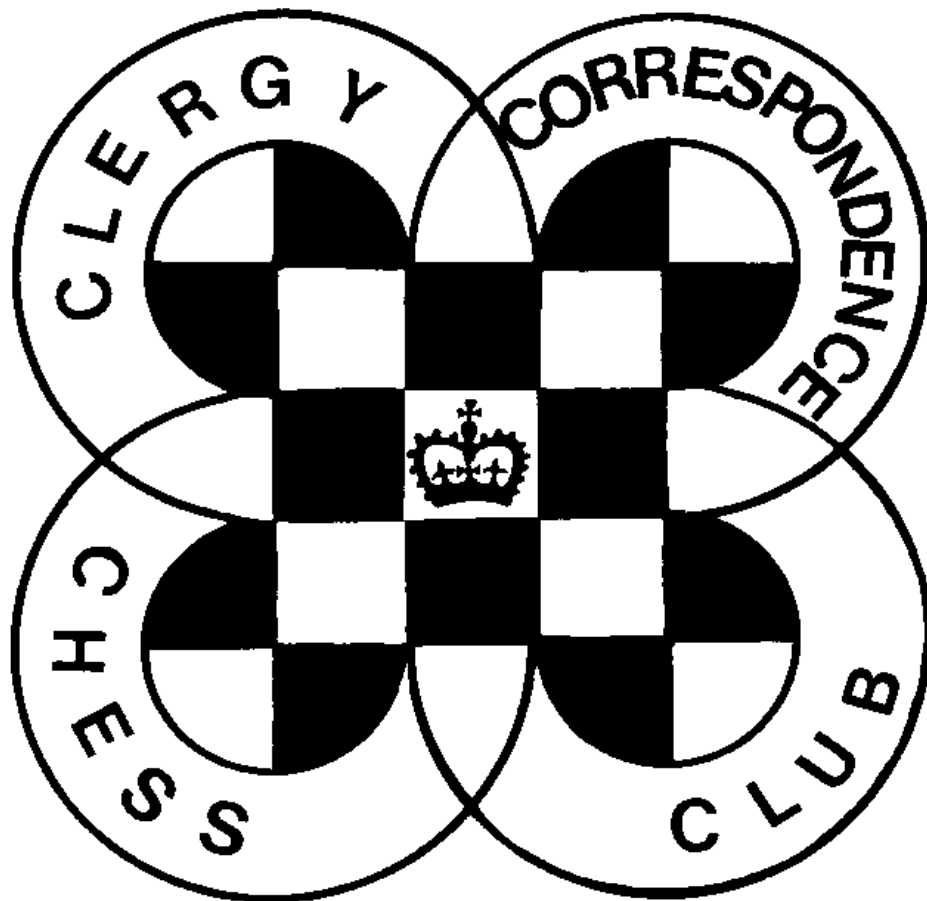


CHES minister !

The magazine of the

CLERGY CORRESPONDENCE CHESS CLUB

www.bfcc-online.org.uk/memberorg/cccc



June 2015

CLERGY CORRESPONDENCE CHESS CLUB

(Affiliated to the English Federation for Correspondence Chess)

www.bfcc-online.org.uk/memberorg/cccc

President :	The Revd. Canon Tim Partridge, 54 Thorney Leys, WITNEY. OX28 5LS.	☎ 01993 864926 Email: tim.partridge39@tiscali.co.uk
Treasurer :	The Revd. Charles Mason, 10a Marshalls Road, BRAINTREE. CM7 2LL.	☎ 01376 322840 Email: revdcom@btinternet.com
Secretary:	The Revd. Bruce Carlin 120 Huddersfield Road, ELLAND. HX5 0EE.	☎ 01422 252711 Email: brucecarlin@cooptel.net

Life Members

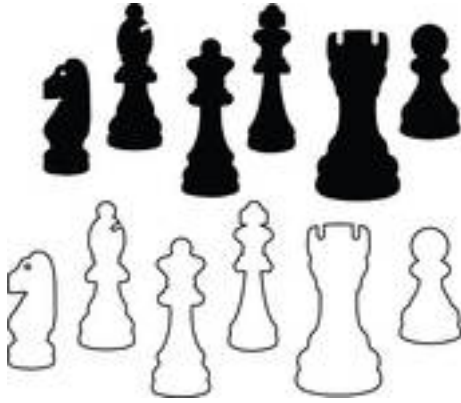
W. Alexander	T.R. Fisher	W.M. Northcott	P.T. Waterfield
L. Batty	A.J. Foster	D.C. Nye	S. Whitmore
D. Boddy	J. Garton	T.R. Partridge	M.J. Williamson
D. Brown	S. Hall	B.E. Shephard	A. Yates
W.P.B. Carlin	D.S.H. Hulme	M. Smith	
R. Cleaves	M. Joy	B. Stevenson	
H. Costello	J.S. Loxton	M.J. Thistlewood	

Subscriptions

Life membership £ 75.50
Annual membership £ 6.00

Current Membership Year : October 2014 to September 2015

Under the terms of the Data Protection Act we are exempt from registering providing members are aware of, and do not object to, the use of computers in the keeping of membership records. The Secretary holds members' name, address, phone number, fax and email addresses where provided, their CCCC division, and membership of any team, and the Treasurer holds members' subscription records.



CHESS Minister!

June 2015

END OF SEASON

The current season finishes on 31st July. Please ensure that all results are notified to the Secretary by that date. Failure to do this may result in outstanding games being scored as a loss to both players.

Unfinished games can be submitted for adjudication but there is a charge for doing this. Full details of how to submit an adjudication are available from the Secretary on request.

ENTERING FOR NEXT SEASON

If you are presently a League Member and have completed your games this year you will automatically be entered into next season's contest unless you inform the Secretary by 31st July.

If you are a non-League Member, or if you failed to complete your games this season then you must tell the Secretary by 31st July if you wish to play next season.

CLUB RESTRUCTURING

Originally the Club had Divisions of up to 5 players, and each member played each other in their Division twice – once as White and once as Black. Several years ago we increased the size of our Divisions to 7 players but reduced the number of games to just one against each opponent.

As the Club has reduced in numbers we are finding that this is less satisfactory. In particular we simply don't have 7 players who are strong enough to be in Division 1, leading to the bottom two more or less certain to be beaten by everybody else which can be disheartening. It was suggested that we revert to the old system of smaller Divisions, again playing each opponent twice, and having canvassed those members who are on email this met with overall support.

In the past we operated a pyramid structure with one First Division, two Second Divisions and four Third Divisions, with promotion and relegation between them. Our membership is no longer big enough to support this so we are more likely to end up with a diamond structure of one First Division, two Second Divisions, and perhaps a single Third Division.

HOW WILL IT WORK?

The bottom two players will be relegated from Division 1 and go into Division 2A and 2B respectively.

The winners of Divisions 2A and 2B will be promoted to Division 1.

Half of the remaining players in Division 2 will be moved between A and B to make sure we are not all playing the same people each season.

If numbers increase a Division 3 will be formed. The bottom players of 2A and 2B would be relegated to Division 3, and the top two players from Division 3 promoted to 2A and 2B.

As at present the Secretary will have discretion to adjust this if the number of players requires a different number in each Division to equalise size, or in the event of withdrawals or a player of known strength returning to league play.

WHAT WILL HAPPEN THIS YEAR?

At the time of writing it looks as though there are going to be two Withdrawals from Division 1. If this is confirmed then the top 3 in this year's Division 1 will remain and be joined by the top 2 players from Division 2.

The bottom two will be relegated to 2A and 2B.

At the time of writing it looks as though we will have exactly fifteen active players next season so there would be no need for a Division 3, in which case all remaining players will be distributed between 2A and 2B.

I won't know exact numbers until 31st July, and so reserve the discretion to adjust this if final numbers require it.

CLERGY CHESS TOURNAMENT

We have been invited to enter members in this championship for Clergy, run by the Polish Correspondence Chess Commission and the Diocese of Drohiczyn. This is an individual Championship rather than a Team event so you would be playing for yourself, not the Club. But you must enter through your National Federation, which in almost all our members' cases is the ECCF (contact me for details if you are interested). You must have internet access as games will be played on the ICCF web server under their rules, and you must be prepared to play as many as 18 games, depending how many people enter.

The closing date for entries is 31st August and play begins in September.

It is open to clergy of any denomination from any country and more details can be found at this link (you need to scroll down a little to see it in English):

http://kszgk.com/?page_id=8346

RESULTS OF THIS SEASON

If I get a reasonable number of further results I will email an update so that you can see how others in your Division are doing, though you are welcome to contact me if you need this information before perhaps agreeing the result of a game.

I will email the final results and put them on the web site as soon as they are available. If you can't receive email and don't want to wait until the October magazine, please send me a stamped address envelope and I will send you a printed copy.

GAMES FOR THE MAGAZINE

Our thanks to those who have sent in games for publication, and to Michael Thistlewood for preparing them for the magazine. Please continue sending in your games, with analysis where possible. Any game score sent will be considered for publication unless you state that you do not want this, as will any game played on the Scheming Mind web server.

SCHEMING MIND STANDARD CHESS LEAGUE

The new Season didn't get off to a good start as we were comprehensively beaten by The Chess Warriors B Team 7½ to 2½. But things improved in the second round with a 6-3 (one outstanding) win over Star Trek D Team. We currently trail Apple Pie B 1-3 and are about to start our 4th round against Harrogate CCC A Team.

If anyone feels able to fortify our Team in this please let the Secretary know.

**CLERGY CORRESPONDENCE CHESS CLUB
RESULTS 2014 / 2015**

DIVISION 1	A	H	St	Sm	F	N	P	Pts	%	
Alexander	⊗	V	V	V	V	V	V	V		
Hulme	V	⊗		1	1	1	1	4 / 4	100	
Stevenson	V		⊗	0		1		1 / 2	50	
Smith	V	0	1	⊗	1	1	1	4 / 5	80	
Foster	V	0		0	⊗	1	1	2 / 4	50	
Nye	V	0	0	0	0	⊗	1	1 / 5	20	
Partridge	V	0		0	0	0	⊗	0 / 4	0	
DIVISION 2	H	Lw	W	Y	Lx			Pts	%	
Hall	⊗	1	0					1 / 2	50	
Lowe	0	⊗	0		1			1 / 3	33	
Williamson	1	1	⊗					2 / 2	100	
Yates				⊗						
Loxton		0			⊗			0 / 1	0	
						⊗				
							⊗			
DIVISION 3	B	Ca	P	Cl	T			Pts	%	
Battye	⊗	1	1	1	1			4 / 4	100	
Carlin	0	⊗	½	½	1			2 / 4	50	
Procter	0	½	⊗	1	0			1½ / 4	38	Procter beats Cleaves on the second tie break criterion, the Sonneborn-Berger tie break.
Cleaves	0	½	0	⊗	1			1½ / 4	38	
Thistlewood	0	0	1	0	⊗			1 / 4	25	
						⊗				
							⊗			

A fair amount of results are in from Division 1 and at the time of writing David Hulme is looking set to regain his title with 100% score from his completed games. That said were he to lose his final game it is possible that we could see a tie, possibly between three players. At the bottom David Nye and Tim Partridge are certain to be relegated.

Division 2 has the fewest results and no pattern is clearly emerging as to who might gain promotion.

Division 3 was complete by the end of January with Lisa Battye scoring 100% and winning comfortably. Apart from her the Division was quite close, for while 2 points separate 1st and 2nd only 1 point separates 2nd to 4th. Bruce Carlin is 2nd with half the percentage score of the winner, while Nick Procter and Richard Cleaves tie (with Procter winning the tie) half a point behind, and Michael Thistlewood bringing up the rear.

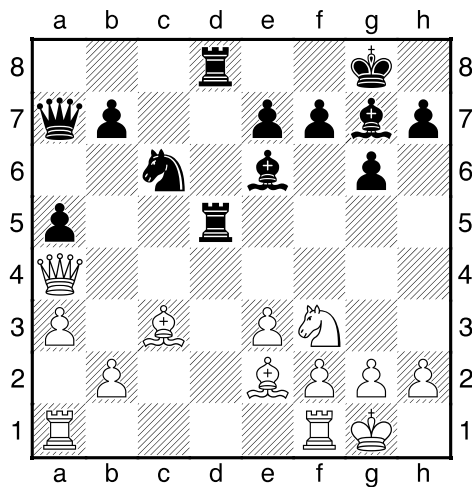
**Please make every effort to complete your games
and let me have your results by 31st July.**

Unfinished games may be submitted for adjudication but there is a charge for this, so try to agree results between yourselves if games cannot be completed.

Antony Foster – Mike Smith
[A70]

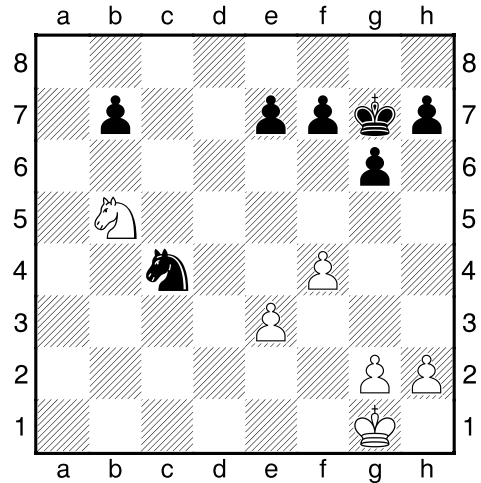
Division 1 – 2014-2015,

1.d4 Nf6 2.c4 g6 3.Nc3 d5 4.cxd5
 Nxd5 5.Nxd5 Qxd5 6.e3 Bg7
 7.Nf3 0-0 8.Be2 c5 9.0-0 Nc6
 10.dxc5 Qxc5 11.Qb3 a5 12.a3
 Be6 13.Qb5 Qa7 14.Bd2 Rfd8
 15.Bc3 Rd5 16.Qa4 Rad8 Diagram



This position is level materially,
 but Black has better placed
 Rooks and threatens b5

17.Bxg7 Kxg7 18.Rfd1 Qb6
 19.Rxd5 Bxd5 20.b4 axb4
 21.axb4 Qxb4 22.Qxb4 Nxb4
 23.Rb1 Na2 24.Bf1 Rc8 25.Nd4
 Rc1 26.Rxc1 Nxc1 27.f4 Nb3
 28.Nb5 Nd2 29.Bd3 Bc4 30.Bxc4
 Nxc4 Diagram



Black is a passed pawn ahead,
 so continues to force piece
 exchanges

31.Kf2 Kf6 32.Ke2 Nd6 33.Nd4 e5
 34.fxe5+ Kxe5 35.Kd3 Kd5 36.g4
 Ne4 37.Ke2 Kc4 38.Kf3 Ng5+
 39.Kf4 Ne6+ 40.Ke5 Nxd4
 41.exd4 f6+ 42.Ke4 g5 43.d5 Kc5
 With only a King, White cannot
 stop the b pawn from queening

0-1

BEWARE!

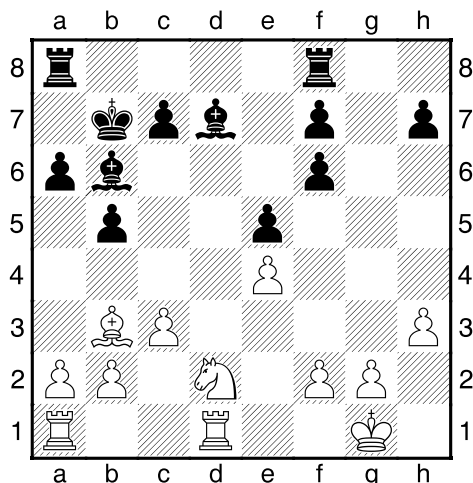
If you are starting out on the Dutch
 Defence, beware of this:

1.d4 f5 2.h3 Nf6 3.g4 fxg4
 4.hxg4 Nxg4 5.Qd3 Nf6
 6.Rxh7!!

Richard Cleaves – Bruce Carlin [C78]

1.e4 e5 2.Nf3 Nc6 3.Bb5 a6 4.Ba4 Nf6 5.0-0 b5 6.Bb3 Bc5 7.c3 d6 8.d4 Bb6 9.dxe5 Nxe5 10.Nxe5 dxe5 11.Qxd8+ Kxd8 12.Bg5 Rf8 13.Bxf6+ gxf6 14.Rd1+ Bd7 R. At this point I felt I had an advantage. B.Yes, I have not castled and now cannot so 16...Kb7 is the only way to allow the Rooks to join up.

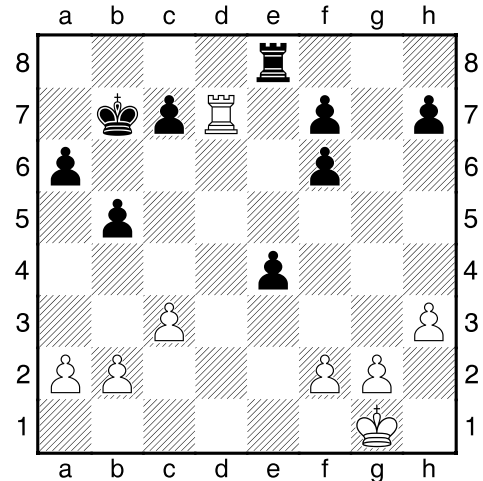
15.Nd2 Kc8 16.h3 Kb7



17.Nf3 Rad8 18.Rd2 Bc6 19.Rad1 Rxd2 20.Rxd2 Bxe4 21.Bd5+ R. I thought this was a good move – Black's pawn advantage is offset by the doubled pawns on f and the isolate h pawn.

21...Bxd5 22.Rxd5 R. This puts me in a strong position on the open d file

22...e4 23.Nd4 Bxd4 24.Rxd4 Re8 25.Rd7 Diagram

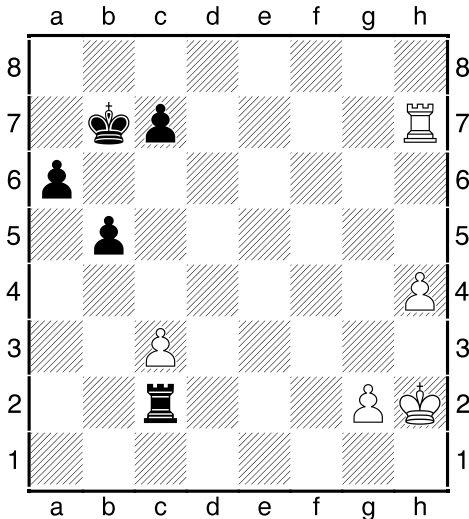


R. At this point I feel I am really on top – though it is interesting to wonder whether strictly this is now a drawn game

25...e3 26.fxe3 Rxe3 27.Rxf7 Re1+ B. I am not normally very good at Rook and Pawn endings so didn't really want this wholesale exchange of pieces, though I have gained a pawn through it. But Re1+ was a mistake, which I saw the minute I had clicked 'confirm' for the move. 28.Kf2 would have given White a distinct advantage, but one mistake deserves another! So now it is a race to see if anyone can promote a pawn.

28.Kh2 Ra1 29.Rxf6 Rxa2 30.Rh6 Rxb2 31.Rxh7 Rc2 32.h4 R. I decide at this point to advance my h pawn. I wonder whether this was a mistake. I wondered later whether I should have tried to take

my King with the two pawns forward ... but it's pretty close with Black pushing now on the Queen's side



32...Rxc3 33.h5 b4 34.h6 b3 35.Rf7 Rc6 R. I had taken my eye off the game at this point and was disappointed at this move, but it was entirely predictable

36.h7 Rh6+ 37.Kg3 Rh1 38.h8Q B. White does actually promote a pawn here, but knows he cannot keep it

38...Rxb3 39.Rf3 c5 40.Rxb3+ Kc6 41.Ra3 Kb5 42.Kf3 R. By now I feared Black was beginning to get the upper hand with his pawn advantage

42...Re8 43.Re3 B. White offers a Rook exchange but here I don't fancy it, but the next move in a slightly different position I decide I

can win the race and promote a pawn

43...Rd8 44.Re4 Rd4 R. At this point Black commented 'this is quite fascinating' – and I agreed! But I wondered whether he had made a mistake to get rid of his Rook

45.Rxd4 cxd4 46.g4 d3 B. I said I wasn't very good at this sort of ending and failed to move Kc4 at this point and so allowed White to get in front of my pawn with **48.Kd2**. It is now a forced draw since if I go after his g pawn he takes both mine and I can't promote my a pawn quicker than he promotes his g pawn. The two moves that follow are entirely futile and were played simply because neither of us got the protocol right for offering a draw on Scheming Mind!

47.Ke3 Kc4 48.Kd2 Kd4 49.g5 R. A thoroughly enjoyable game – I am not quite sure exactly where I conceded the advantage – or where Black conceded it back to me! It was fun at the end taking care not to go wrong and having to work at the Pawn finish. When I introduce Cubs to chess in a very elementary evening we have a go with a game of pawns and they want to get on to real chess ... little to they know how 'real' it feels when it gets down to a tussle between pawns!!! ½ ½