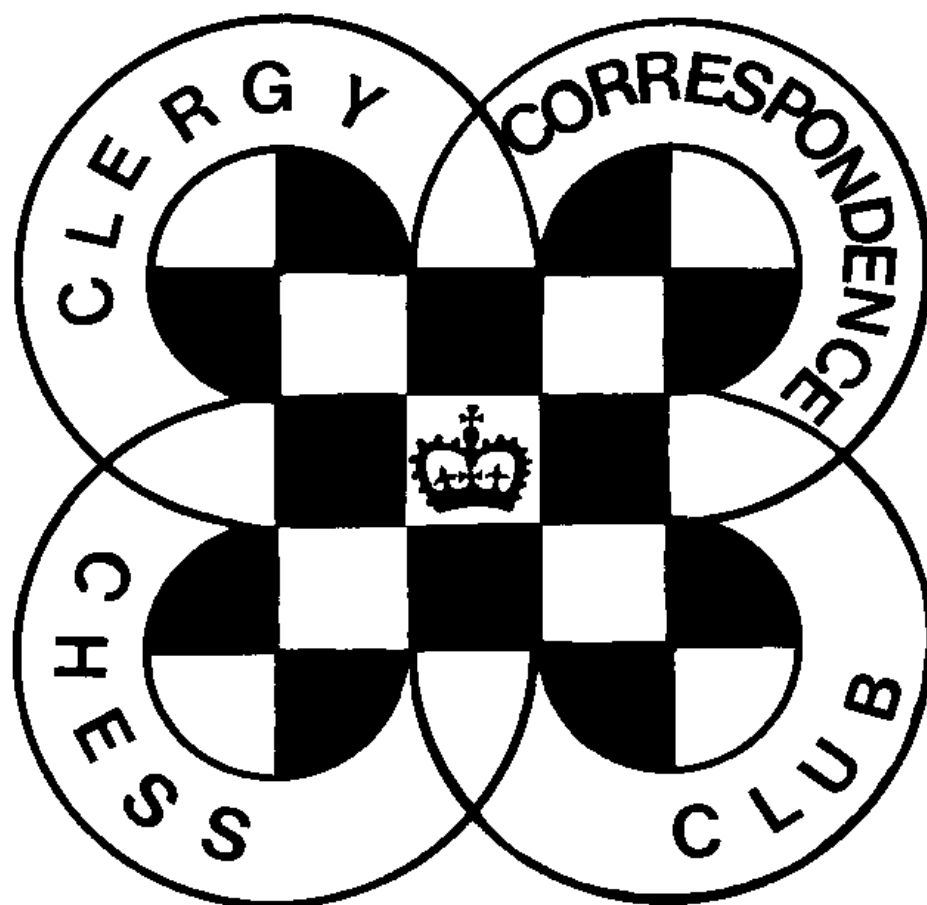


# CHESS minister !

The magazine of the

**CLERGY CORRESPONDENCE CHESS CLUB**

[www.bfcc-online.org.uk/memberorg/cccc](http://www.bfcc-online.org.uk/memberorg/cccc)



**February 2013**

# CLERGY CORRESPONDENCE CHESS CLUB

(Affiliated to the British Federation for Correspondence Chess)

[www.bfcc-online.org.uk/memberorg/cccc](http://www.bfcc-online.org.uk/memberorg/cccc)

**President :** The Revd. Canon Tim Partridge,  
54 Thorney Leys,  
WITNEY. OX28 5LS. ☎ 01993 864926  
Email: [tim.partridge39@tiscali.co.uk](mailto:tim.partridge39@tiscali.co.uk)

**Treasurer :** The Revd. Charles Mason,  
10a Marshalls Road,  
BRAINTREE. CM7 2LL. ☎ 01376 322840  
Email: [revdcom@btinternet.com](mailto:revdcom@btinternet.com)

**Secretary:** The Revd. Bruce Carlin  
120 Huddersfield Road,  
ELLAND. HX5 0EE. ☎ 01422 252711  
Email: [brucecarlin@cooptel.net](mailto:brucecarlin@cooptel.net)

## Life Members

W. Alexander	R. Cleaves	D.S.H. Hulme	M. Smith
E.A. Bailey	H. Costello	M. Joy	B. Stevenson
L. Batty	P. Couch	J.S. Loxton	M.J. Thistlewood
D. Boddy	T.R. Fisher	W.M. Northcott	P.T. Waterfield
D. Brown	A.J. Foster	D.C. Nye	S. Whitmore
J. Caldwell	J. Garton	T.R. Partridge	M.J. Williamson
W.P.B. Carlin	S. Hall	B.E. Shephard	A. Yates

## Subscriptions

Life membership £ 72.00  
Annual membership £ 5.60

Current Membership Year : October 2012 to September 2013

Under the terms of the Data Protection Act we are exempt from registering providing members are aware of, and do not object to, the use of computers in the keeping of membership records. The Secretary holds members' name, address, phone number, fax and email addresses where provided, their CCCC division, and membership of any team, and the Treasurer holds members' subscription records.

In this magazine you will find results so far received from the current season, along with the Club's accounts, as well as some games as usual.

Please note that your Secretary has moved. My address is now 120 Huddersfield Road, ELLAND. HX5 0EE. 01422 252711. My email is unchanged. Don't worry if you have sent anything by post in the last month or two as it should have been forwarded, but if you have been trying to phone me since 17 December you will have been unsuccessful, so please try again now. Without going into great detail, my last parish did not work out as I had hoped and after being off sick for a few months with stress I was more or less forced to take early retirement on health grounds.

There don't seem to be any more moves to record for members, except those on the chess board which you can read about elsewhere, though Stanley Hall has subscribed as a Life member of the Club, for which our thanks.

Please report results as your games finish, and send in any games that you think are fit for publication, annotated wherever possible. Thanks as always to Michael Thistlewood who has typed up the games for publication.

**Bruce Carlin (Secretary)**

## NEW RULE

Some members have become frustrated by other members repeatedly defaulting on their games. The committee have given some thought to this and decided to introduce a new Rule to deal with this problem. 'Good cause' would include illness, or any other good reason why a player failed to complete their games.

30.a. Should a player default in two consecutive seasons without good cause, that player shall become a Non-League Member for the following season. Before they can return to League play in a future season they must successfully complete a friendly game against another member of the Club.

## SCHEMING MIND STANDARD CHESS LEAGUE

Our second season in the Scheming Mind tournament has seen an improvement in our fortunes. We began the season by beating Apple Pie B 6-4, before losing to Will's Wonders 4-6. We then comprehensively beat Scotland the Brave 9½-½ before suffering nearly as badly at the hands of The Chess Warriors, to whom we lost 1½-8½. We then completed our season with wins against CCLA 6½-3½ and International Chess Friends B 5½-2½ (two games are still in progress but we have won the match). In our Division we currently stand 2<sup>nd</sup>, just one point behind The Chess Warriors and equal with CCLA (but ahead on games won). However, Will's Wonders are just a point behind us and still have their last match in play, in which they lead Apple Pie B 4½-3½. With a superior win ratio they need just half a point from their remaining 2 games to overhaul us and deny us promotion. But it has been an encouraging season and congratulations to all our Team.

If you would like to join this team for the next season please let me know – the more players we have the fewer games each player needs to play as we can rotate our players between rounds.

## CCCC ACCOUNTS

### Income and Expenditure Account for year ended 31.7.12

	<u>2011/12</u>	<u>(2010/11)</u>		<u>2011/12</u>	<u>(2010/11)</u>
<u>Income £</u>			<u>Expenditure £</u>		
Subscriptions	21.60	(35.77)	Secretary's Expenses		
Bank Interest	2.09	(2.14)	Magazine	61.06	(38.92)
Advertising		(4.00)	Treasurer's Expenses	1.72	(1.68)
Deficit for year	54.09	(13.69)	BFCC Affiliation	15.00	(15.00)
	<u>77.78</u>	<u>(55.60)</u>		<u>77.78</u>	<u>(55.60)</u>

### Balance Sheet as at 31.7.12

	<u>£</u>
Balances brought forward	1072.94
Less: deficit for year	54.09
	<u>1018.85</u>
<b>TOTAL NET ASSETS</b>	<b>1018.85</b>
<u>Represented by:</u>	
Santander UK plc current account	17.67
Santander UK plc deposit account	2.96
NS&I Investment Account (Life Membership)	998.22
	<u>1018.85</u>

### Treasurer's Report on the 2011/12 Accounts

At first sight you might find these accounts alarming: income was only just over 30% of expenditure, and we incurred a deficit of £54.09. With interest rates continuing at their historically low levels, this is inevitable, as there is no way the costs of life membership can be funded from the meagre interest earned (£2.09); and so successful has been our drive to get people to switch to life membership that last year we had just four annual subs.

However, things are not really as bad as they look. First of all, we have gained another life member in the current year, and we have already received another 2 years' worth of subs from our Canadian associate member. Secondly, our Secretary, cunning fellow that he is, bought 100 stamps in time to beat the big price rise last April, and these should last 2-3 years. Therefore his expenses are exceptionally high this year but should be very much lower next year and the year after. Thirdly, NS&I have re-jigged the operation of their Investment Account, which now has higher interest rates – we may expect about £5 more next time round. Fourthly, we continue to bear down on costs, with more and more of you accepting delivery by email. I would also repeat the point I made last year, that our asset levels provide a cushion of several years before there could be any real danger of CCCC running out of money.

At the end of the financial year the value of the Life Membership fund stood at £36.97 per Life Member (previous year: £38.75). As predicted, I had to make a withdrawal of £50.

All subs were paid up at the end of the financial year, and as I write in January there are no current arrears either. With now only three annual members in the Club, this is becoming easier to achieve!

**Charles Mason – Hon Treasurer, CCCC**

## Michael Thistlewood David Lowe [C77]

Division 2 - 2012-2013

1.e4 e5 2.♘f3 ♘c6 3.♙b5 a6 4.♙a4 ♘f6 5.d3  
b5 6.♙b3 ♙c5 7.h3 0-0 8.a3 h6 9.0-0 ♙b7  
10.♙a2 a5 11.♞e1 ♞e8 12.♙e3 ♙xe3  
13.♞xe3 d5 14.♞e1

Fritz points out that I should have taken d5 with the Bishop or pawn. In fact by not doing this I lost a pawn in the next few moves and probably the game as a result.

14...dxe4 15.dxe4 ♙xd1 16.♞xd1 ♘xe4  
17.♘bd2 ♘xd2 18.♞xd2 ♞ad8 19.♞ad1  
♞xd2 20.♞xd2 ♘d8 21.♘xe5

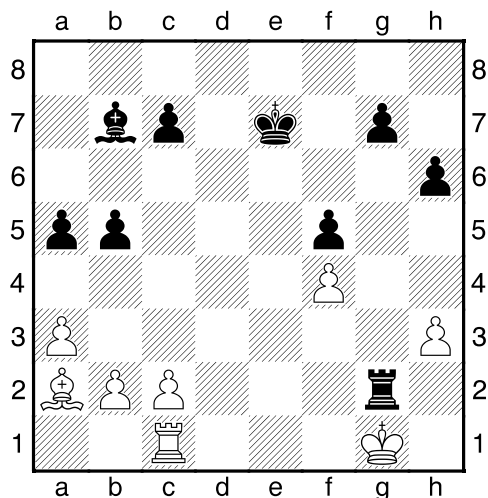
This is possible because if Rook takes then my Rook takes Knight. So we are now level.

21...♙f8 22.♞d7 ♞xe5 23.♞xd8+ ♙e7 24.♞d1  
f5 25.f4 ♞e2 26.♞c1

We both thought that I should have played Bd5

26...♞xg2+

Diagram .



I didn't see this and I think the game is now lost.

27.♙f1 ♞h2 28.♞e1+ ♙f8 29.♞e5 g6 30.♙e1  
c6 31.♞e3 c5 32.♙d1 c4 33.♙c1 ♙e4  
34.♞c3 g5 35.fxg5 hxg5 36.b3 f4 37.bxc4  
b4

Ouch! I had hoped he would take c4 and let my Bishop take and thus defend the f1 square against a storming pawn.

38.axb4 axb4 39.♞b3 ♞xc2+ 40.♙b1 ♞c3+  
41.♙b2 ♞xb3+ 42.♙xb3 f3 43.c5 f2  
44.♙xb4 f1♙ 45.♙c4 ♙xh3 46.♙b5 g4 47.c6  
g3 48.c7 g2 49.♙b4 g1♞ 50.c8♙+

All this is sheer nonsense in the hope of swindling a stalemate. Needless to say, it didn't work!

50...♙xc8 51.♙b5 ♞b1+ 52.♙a5 ♙c5 53.♙a4  
♙xb5+ 54.♙a3 ♙a6# 0-1

This game was remarkable for two reasons:

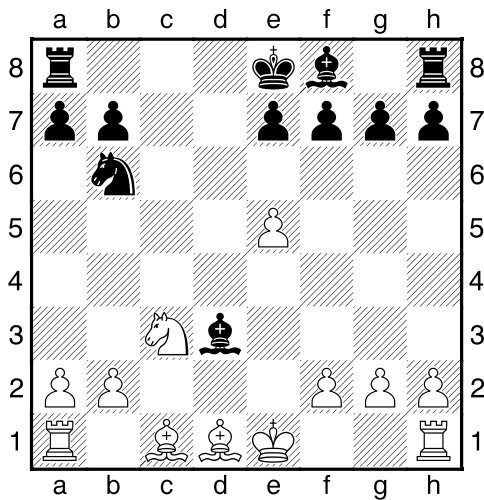
1. The quality of the banter was probably higher than the quality of the chess. Much of it surrounded a chess piece which has ecclesiastical connotations.

2. After move 22 (see diagram) I felt that the position was lost and I very much wanted to resign, but David persuaded me to play on as he felt there was still interest in the game. But my temptation to resign was very strong as then we could have finished the game before the season began!! You will be pleased to hear that I conquered my temptation!

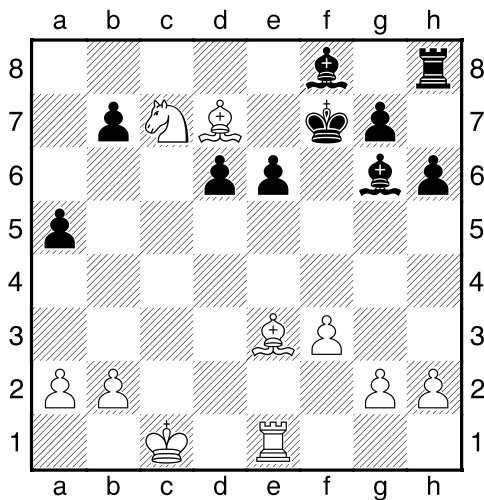
**Justin Caldwell**  
**Andrew Yates [B22]**

Division 1 - 2011-2012

1.e4 c5 2.c3 ♘f6 3.e5 ♘d5 4.d4 cxd4 5.♗f3  
 ♗c6 6.cxd4 d6 7.♙c4 ♗b6 8.♙b3 ♙f5 9.♗c3  
 dxe5 10.♗xe5 ♗xe5 11.dxe5 ♖xd1+  
 12.♙xd1 ♙d3 Diagram



13.♙e3 ♗d7 14.♙a4 a6 15.e6 fxe6 16.♙xd7+  
 ♗f7 17.0-0-0 ♙g6 18.f3 h6 19.♖he1 a5  
 20.♗b5 ♖a6 21.♗c7 ♗d6 22.♖xd6 exd6  
 Diagram

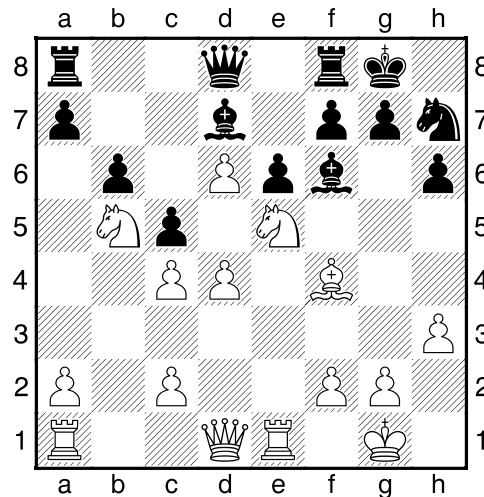


23.♙e8+ ♗f6 24.♙d4+ ♗g5 25.♗xe6+ ♗h5  
 26.♗f4+ 1-0

**Lisa Battye**  
**Opponent**

Scheming Mind

1.e4 c5 2.♙c4 e6 3.♗c3 ♙e7 4.♗f3 ♗f6 5.0-0  
 0-0 6.d4 d6 7.h3 h6 8.♙f4 ♗bd7 9.♖e1  
 ♗b6 10.b3 ♗xc4 11.bxc4 b6 12.e5 ♗h7  
 13.♗b5 ♙d7 14.exd6 ♙f6 15.♗e5 Diagram



15...♙xb5 16.cxb5 ♙xe5 17.♙xe5 ♖d7 18.c4  
 a6 19.a4 f6 20.♙g3 cxd4 21.♖xd4 a5  
 22.♖xb6 ♖fb8 23.♖c7 ♗d8 24.♖ac1 ♖xd6  
 25.♙xd6 1-0

**David Lowe**  
**David Hulme**

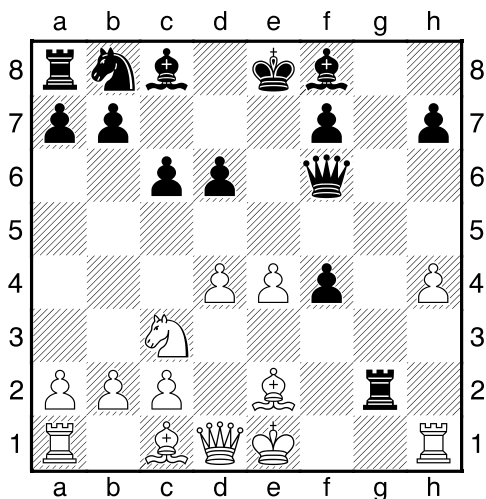
Division 1 - 20122-2012

1.e4 c5 2.♗f3 ♗c6 3.d4 cxd4 4.♗xd4 ♗f6  
 5.♗c3 e6 6.♗db5 ♙b4 7.♗d6+ ♗e7  
 8.♗xc8+ ♖xc8 9.♖d3 d5 10.♙d2 ♗xe4  
 11.♗b1 ♖b6 12.♖e3 ♗xd2 13.♖xb6 ♗xf1+  
 14.♖xb4+ ♗xb4 15.c3 ♗c2+ 16.♗xf1 ♗xa1  
 17.♗a3 d4 18.♗e2 dxc3 19.♖xa1 cxb2  
 20.♖b1 ♖c6 21.♗b5 ♖c2+ 22.♗f3 ♖d8 0-1

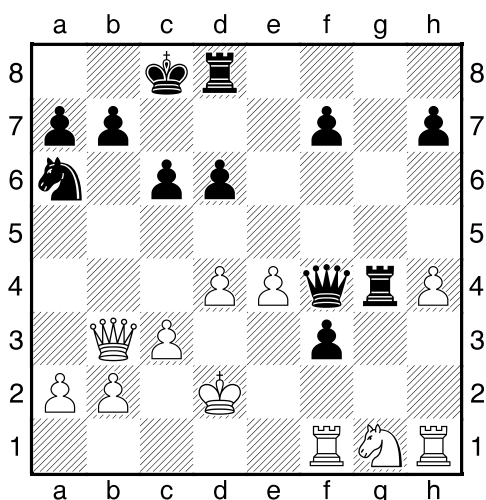
# English Teacher (Czech) David Lowe

Scheming Mind, 2012

1.e4 e5 2.f4 exf4 3.♘f3 g5 4.h4 g4 5.♗e5 d6  
6.♗xg4 ♗f6 7.♗xf6+ ♜xf6 8.♗c3 c6 9.♙e2  
♙g8 10.d4 ♞xg2 Diagram

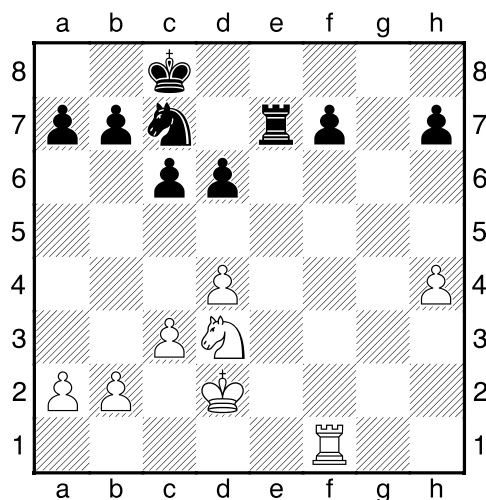


11.♙f3 ♞g8 12.♗e2 ♙h6 13.♙d2 ♗a6 14.c3  
♙d7 15.♜b3 0-0-0 16.0-0-0 ♙g4 17.♙xg4+  
♞xg4 18.♞df1 f3 19.♗g1 ♙xd2+ 20.♗xd2  
♜f4+ Diagram



21.♗d1 f2 22.♗h3 ♜xe4 23.♗xf2 ♜f3+  
24.♗d2 ♞f4 25.♜d1 ♜g2 26.♜e2 ♗c7

27.♗d3 ♜xe2+ 28.♗xe2 ♞e8+ 29.♗d2 ♞xf1  
30.♞xf1 ♞e7 Diagram



31.♞f4 ♗d5 32.♞f5 ♗d7 33.c4 ♗e3 34.♞h5  
f5 35.b3 ♗e8 36.♞h6 ♗f1+ 37.♗c3 d5  
38.♗e5 dxc4 39.bxc4 c5 40.♞f6 ♗g3 41.a4  
♗e4+ 0-1

David Lowe won his game against an English Teacher in the Czech Republic. He commented: 'I'm afraid he resigned before I could get him Czech Mate!'

*(The standard of this magazine is obviously going downhill – Games Editor).*

## Wilfred Alexander - David Lowe

Division 1 - 2011–2012

1.d4 d5 2.c4 dxc4 3.♗f3 ♗f6 4.e3 e6 5.♙xc4  
c5 6.0-0 ♗c6 7.♜e2 a6 8.a4 cxd4 9.♞d1 ♙c5  
10.exd4 ♗xd4 11.♗xd4 ♜b6 12.♙e3 0-0  
13.a5 ♜c7 14.♞c1 e5 15.♗e6 fxe6 16.♙xc5  
♞f7 17.♙b6 ♜d6 18.♗d2 ♗d5 19.♗e4 ♜f8  
20.♙c5 ♗e7 21.♞c3 g6 22.♗g5 ♞f6 23.♞d1  
♜e8 24.♜xe5 ♗g7 25.♙d4 ♜f8 1-0

## CLERGY CORRESPONDENCE CHESS CLUB

### RESULTS 2012 / 2013

<b>ON 1</b>	A	Hu	F	S	C	N	Ha	Pts	%
Alexander	✗								
Hulme		✗			1	1		2 / 2	100
Foster			✗	0	1		0	1 / 3	33
Smith			1	✗	1			2 / 2	100
Carlin		0	0	0	✗			0 / 3	0
Nye		0				✗	0	0 / 2	0
Hall			1			1	✗	2 / 2	100
<b>DIVISION 2</b>	Lw	Y	W	T	Lx	S		Pts	%
Lowe	✗	½		1		0		1½ / 3	50
Yates	½	✗		1				1½ / 2	75
Williamson			✗						
Thistlewood	0	0		✗	1	0		1 / 4	25
Loxton				0	✗			0 / 1	0
Stevenson	1			1		✗		2 / 2	100
<b>DIVISION 3</b>	Pa	Co	Cl	Pr	B			Pts	%
Partridge	✗		½	1				1½ / 2	75
Couch		✗		1				1 / 1	100
Cleaves	½		✗	1				1½ / 2	75
Procter	0	0	0	✗	½			½ / 4	13
Boddy				½	✗			½ / 1	50
						✗			

A decent number of results are already in and it is only February, but it is good that people are getting on with their games. Perhaps those who are playing on Scheming Mind have found that the time control concentrates their minds. If more players did switch to Scheming Mind it might be possible to suggest staggering the start of our games so that we do not necessarily have to play all five or six of our games simultaneously, perhaps starting two games each month between October and December. Let me know if you think this might be a good idea, as it could improve the quality of play if we each had slightly fewer games on the go.

With the retirement of Justin Caldwell Division 1 is looking quite open so far, with David Hulme, Mike Smith and Stanley Hall currently on 100% with two wins each.

Early results suggested that David Lowe and Andrew Yates were looking favourites to regain their Division 1 status next season, but former winner Brian Stevenson is now clearly challenging them.

Tim Partridge and Richard Cleaves are initial leaders in Division 3, though Peter Couch is on 100% but from only one game.

But it remains early days and much can change between now and July.