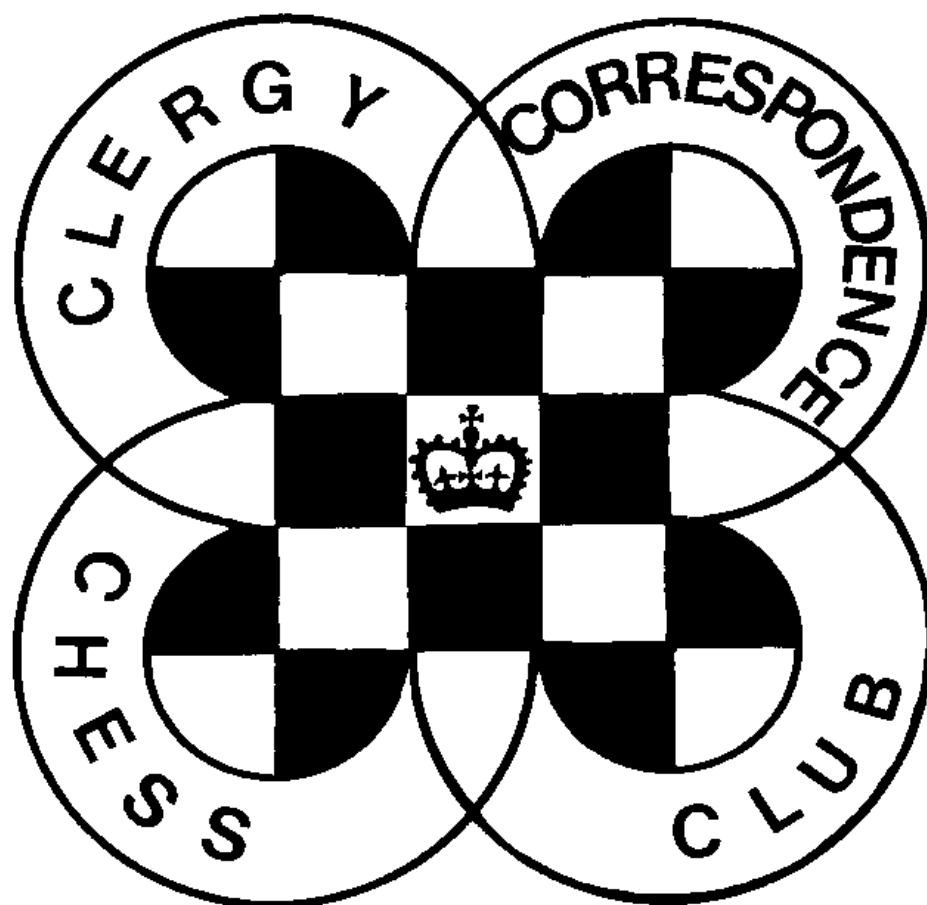


CHESS minister !

The magazine of the

CLERGY CORRESPONDENCE CHESS CLUB

www.bfcc-online.org.uk/memberorg/cccc



October 2012

CLERGY CORRESPONDENCE CHESS CLUB

(Affiliated to the British Federation for Correspondence Chess)

www.bfcc-online.org.uk/memberorg/cccc

President : The Revd. Canon Tim Partridge, ☎ 01993 864926
54 Thorney Leys, Email: tim.partridge39@tiscali.co.uk
WITNEY. OX28 5LS.

Treasurer : The Revd. Charles Mason, ☎ 01376 322840
10a Marshalls Road, Email: revdcom@btinternet.com
BRAINTREE. CM7 2LL.

Secretary: The Revd. Bruce Carlin ☎ 0161 764 1187
St. Peter's Vicarage, St. Peter's Road, Email: brucecarlin@cooptel.net
BURY. BL9 9QZ.

Life Members

W.Alexander	R.Cleaves	M.Joy	B.Stevenson
E.A.Bailey	H.Costello	J.S.Loxton	M.J.Thistlewood
L.Batty	P.Couch	W.M.Northcott	P.T.Waterfield
D.Boddy	T.R.Fisher	D.C.Nye	S.Whitmore
D.Brown	A.J.Foster	T.R.Partridge	M.J.Williamson
J.Caldwell	J.Garton	B.E.Shephard	A.Yates
W.P.B.Carlin	D.S.H.Hulme	M.Smith	

Subscriptions

Life membership £ 72.00
Annual membership £ 5.60

Current Membership Year : October 2012 to September 2013

Under the terms of the Data Protection Act we are exempt from registering providing members are aware of, and do not object to, the use of computers in the keeping of membership records. The Secretary holds members' name, address, phone number, fax and email addresses where provided, their CCCC division, and membership of any team, and the Treasurer holds members' subscription records.

CHESS Minister!

October 2012

This magazine begins the 2012 / 2013 season. Play officially begins on 1st October but you can start as soon as you wish. If playing by post, phone or email you need not count time until 1st October. If you chose to play on the Scheming Mind web server time will of course start to count as soon as you begin your game, but against that you do have the option of staggering your games with the agreement of your opponent as long as you don't leave it so late that you won't finish by July next year. To see who you are playing see the pairings on the loose sheet. Non-league members can make direct contact with another or contact me and once I have heard from two such players I will put them in touch. If you have difficulty in obtaining window envelopes for use with score sheets I hold a small stock and offer them to members for £3 per 100 including postage. If you want address cards for window envelopes send a stamped addressed envelope and I will send some to you, but they are easy enough to make yourself.

Once again, thanks for getting your results in on time which eases my burden in preparing the new season, and has a knock on effect in that this season gets started early, giving us all extra time to complete our games.

We still have 3 Divisions this season. Justin Caldwell has withdrawn from league play to be replaced by Brian Stevenson whom I have put into Division 2 on the basis of his past form in the Club (he was joint winner in 1984). This has necessitated a bit of adjustment in promotions, but while one player has been promoted who wouldn't have been, no one has been relegated who shouldn't have been.

Congratulations to David Brown (NLM) on his marriage to Hanna in August.

Andrew Yates is moving at the beginning of September. In the Divisions I have listed him at his present address, but from (he hopes) September 3rd his address will be Hanover House, King's Road PENZANCE. TR18 4LG. At the time of writing he does not know his phone number at this address, and members of Division 2 should be aware that he may not wish to start his games early with a house move in prospect. I believe that with this move Andrew has achieved a 'first' for the Club in that part of his new ministry is Vicar of Paul, the parish of which Geoffrey Harper was Vicar from 1982 to 1998. Is there something in the West Cornish air that is suited to chess playing clergy?

Subscriptions of £5.60 are due for the current season unless you are a Life Member. You can become a Life Member for £72.00 and not have to remember subscriptions any more. Please send subs. direct to our Treasurer as sending them via me only increases postage costs.

As always, my thanks to Michael Thistlewood for typing up games for the magazine, and to those who send them in. Any score sheet sent in will be considered for publication unless you say you do not want this, but please consider sending in your games with annotations which are more instructive to other members.

With best wishes for the new season.

Bruce Carlin (Secretary)

**CLERGY CORRESPONDENCE CHESS CLUB
RESULTS 2011 / 2012**

DIVISION 1	C	A	H	F	S	L	Y	Pts	%	Congratulations to Justin Caldwell CCCC Champion 2011 / 2012
Caldwell	✗	½	½	1	1	1	1	5	83	
Alexander	½	✗	½	½	1	1	1	4½	75	
Hulme	½	½	✗	0	1	1	1	4	67	
Foster	0	½	1	✗	½	1	½	3½	58	
Smith	0	0	0	½	✗	1	1	2½	42	
Lowe	0	0	0	0	0	✗	1	1	17	
Yates	0	0	0	½	0	0	✗	½	8	
DIVISION 2	Ca	N	H	W	P	Co		Pts	%	The tie between Nye & Hall is resolved on the first criterion, that Nye won their game. The tie between Williamson & Partridge is resolved on the second criterion of removing their score against the lowest
Carlin	✗	1	0	1	1	½		3½	70	
Nye	0	✗	1	½	½	1		3	60	
Hall	1	0	✗	0	1	1		3	60	
Williamson	0	½	1	✗	½	0		2	40	
Partridge	0	½	0	½	✗	1		2	40	
Couch	½	0	0	1	0	✗		1½	30	
DIVISION 3	T	L	C	P	B	S		Pts	%	
Thistlewood	✗	1	½	1	V	V		2½	83	
Loxton	0	✗	1	1	V	V		2	67	
Cleaves	½	0	✗	1	V	V		1½	50	
Procter	0	0	0	✗	V	V		0	0	
Boddy	V	V	V	V	✗	V		void		
Shephard	V	V	V	V	V	✗		void		

In Division 1 Justin Caldwell & Wilf Alexander were unbeaten, Justin taking the title by ½ point. David Hulme was another ½ point behind in 3rd, while Antony Foster established his place in the top Division with a better than half score. Mike Smith survives as David Lowe and Andrew Yates are relegated after disastrous seasons, scoring just 1½ points between them.

Bruce Carlin won Division 2 with David Nye gaining promotion on tie break over Stanley Hall. Michael Williamson survives on tie break so Tim Partridge and Peter Couch are relegated

Michael Thistlewood wins Division 3, dropping just half a point to Richard Cleaves who is 3rd behind John Loxton. Nick Procter failed to score and both David Boddy (after illness) and Brian Shephard failed to complete their games.

Notwithstanding what is said above about promotion and relegation some adjustments will have to be made as Justin Caldwell has decided it is time to withdraw from league play creating an extra place in Division 1. Brian Stevenson is returning to league play, and given his past record will be entered back into Division 2. As is our normal policy, such adjustments as need to be made will be achieved by extra promotions to help move people around more and give us different people to play against.

THE NEW SEASON : 2012 / 2013

Officially our season runs from October to July. If you are playing by post, phone, or email you can start as soon as you like but you do not need to count time against either player until 1st October. You should play most of your games at the same time, though if you are playing by phone or email it should be possible to delay the start of one or two games for a month or two if both players agree. If you are playing on the Scheming Mind webserver time will count as soon as you begin a game, but again you might delay the start of some games for a month or two by mutual agreement. Whichever method you choose it is your responsibility to make sure that all games are completed 31st July 2013.

The Divisions for the season are on the next page. These normally contain seven players, but some contain fewer to even out numbers. The pairings for the season are on a loose sheet with members' email addresses and Scheming Mind aliases. If you haven't heard from anyone in your Division within 14 days of the start of the season then chase the player concerned, and contact the Secretary if you still fail to make contact (note I am away 7-19 Sept.). Results should be in or games sent for adjudication by 31st July 2013.

At the end of the season two players are promoted and two relegated from each division, with adjustments to take account of any withdrawals. Algebraic notation must be used unless both players agree to use another. Ties are decided initially by the Baumbach Tie Break, then the Sonneborn-Berger Tie Break in accordance with ICCF procedures. This is explained in a separate article in this magazine.

The time columns on the score sheet are: 'R' is the date that you *received* your opponent's move; 'S' is the date you *send* your reply; 'T' is the *total time* used to date. This way you and your opponent can immediately see where you stand in relation to the time limit. If playing by post, phone or email the time limit is 20 days for each 10 moves, time saved is carried forward, same day reply counts as nil, but *every* day counts including Sundays and Bank Holidays. Each player can have 14 days off during a game after notifying their opponent, additional time off for special need can be granted by the Secretary on request. If your opponent exceeds the time limit you can claim the game but you must do this as soon as the time control is broken or you lose the right to claim unless a later one is also broken. In order to avoid anyone exploiting technology to make same day replies impossible (e.g. by emailing or faxing at 2359 hours) the convention is that a move by email or phone is considered to be received the day after it was sent, as if it were a perfect first class letter (I believe there still are such things).

If you are playing on Scheming Mind webserver then the time limit is 30 days plus 1 day per move made, and this is maintained by the web server along with holiday leave etc. and it doesn't allow any leeway so if you break the time limit you are out!

You may communicate your moves by post, telephone, fax, or e-mail, but with the recent increases in postage costs I suspect this will now be the least popular method, though if you are playing by phone an occasional exchange of the score card can help to make sure a mistake in notation has not been made. If using the phone please try not to keep your opponent waiting while you find pen and paper and be clear in your notation, perhaps using the phonetic alphabet in reading out moves.

Please try to complete your games by 31st July as it does ease our administration. If you cannot then a game may be submitted for adjudication but there is a charge for this for us to have access to the BFCC adjudication panel.

CCCC DIVISIONS 2012 / 2013

Titles are omitted in this list to ensure that everyone fits on one line (everyone is at least The Rev'd.).
If the POST TOWN is in upper case and the postcode is used there is no need to state the County.

DIVISION 1

W. Alexander (Wilf), 16 Hawkshaw Close, Locking Stumps, WARRINGTON. WA3 7NF. 01925 851472
D.S.H. Hulme (David), 135 Mill Lane, Dorridge, SOLIHULL. B93 8NY. 01564 773885
A.J. Foster (Antony), 32 Savile Drive, HALIFAX. HX1 2EU. 01422 344152
M. Smith (Mike), 2 Addington Drive, Finchley, LONDON. N12 0PH. 020 8446 7698
W.P.B. Carlin (Bruce), St. Peter's Vicarage, St. Peter's Road, BURY. BL9 9QZ. 0161 764 1187
D.C. Nye (David), 2 Old Burford Road, BLEDINGTON. OX7 6US. 01608 659140
S. Hall (Stanley), 43 Glen Grove, ROYTON. OL2 5SY. 0161 628 6103

DIVISION 2

D. Lowe (David), 21 Firebrass Lane, Sutton Heath, WOODBRIDGE. IP12 3TS. 01394 421722
A. Yates (Andrew), 18 Fore Street, Tregony, TRURO. TR2 5RN. 01872 530507
M.J. Williamson (Michael), 49 Ennerdale Road, Astley, Tyldesley, MANCHESTER. M29 7AR. 01942 870274
M. Thistlewood (Michael), 44 Blackhall Croft, Blackhall Road, KENDAL. LA9 4UU. 01539 739677
J.S. Loxton (John), 4 Caerleon Drive, ANDOVER. SP10 4DE. 01264 355473.
B. Stevenson (Brian), Michaelmas Cottage, Stan Lane, WEST PECKHAM. ME18 5JJ.

DIVISION 3

T.R. Partridge (Tim), 54 Thorney Leys, WITNEY. OX28 5LS. 01993 864926
P. Couch (Peter), 10 Crocket Close, Links View, NORTHAMPTON. NN2 7LL. 01604 713863
R. Cleaves (Richard), Highbury Manse, 17 Carlton Street, CHELTENHAM. GL52 6AG. 01242 522050
N.R. Procter (Nick), 23 Regents Way, Euxton, CHORLEY. PR7 6PG. 01257 241927
D. Boddy (David), The Vicarage, Shotton Colliery, DURHAM. DH6 2JW. 0191 526 1156

NON LEAGUE MEMBERS

E.A. Bailey (Eric), Hill End, Sapiston, BURY ST. EDMUNDS. IP31 1RR. 01359 269638
L. Battye (Lisa), 1 Moorside Road, Kersal. SALFORD. M7 3PJ. 0161 792 5362
D. Brown (David), The Vicarage, Snow Hill, Scorton, PRESTON. PR3 1AY. 01524 791229
J. Caldwell (Justin), Ampleforth Abbey, YORK, YO62 4EN. 01439 766892
H. Costello (Hilary), Mount St. Bernard Abbey, COALVILLE. LE67 5UL. 01530 832298 / 832022.
T.R. Fisher (Ruggles), 12 The Dell, OAKHAM. LE15 6JG. 01572 757630
J. Garton (Jeremy), St. John's Vicarage, 51 Crescent Road, CATERHAM. CR3 6LH. 01833 343188
M. Joy (Matthew), Lindisfarne, Eddyfield Road, Oxspring, SHEFFIELD. S36 8YH. 01226 762276
C.O. Mason (Charles), 10a Marshalls Road, BRAINTREE. CM7 2LL. 01376 322840
W.M. Northcott (Mark), 34 Welsby Road, LEYLAND. PR25 1JB. 01772 493932
B. Shephard (Brian), Keayn Ard, Queen's Road, PORT ST. MARY, I.O.M. IM9 5EP. 01624 833315
P.T. Waterfield (Paul), 3 Nursery Lane, Sutton on Trent, NEWARK. NG23 6PY. 01636 821869
S. Whitmore (Steve), 70 Marlow Road, HIGH WYCOMBE. HP11 1TH. 01494 529586

CCCC TIE BREAK PROCEDURES

Following changes by the ICCF (International Correspondence Chess Federation), to which are affiliated through the BFCC (British Federation for Correspondence Chess), we are changing our tie-break procedures to bring them in line with those of ICCF. From the 2012/2013 season ties will be broken by the following procedures in this order:

1. Baumbach Tie Break
2. Sonneborn-Berger Tie Break
3. The game between the tied players
4. Most wins playing Black
5. Most draws playing Black
6. Highest Rating (Scheming Mind or ICCF)
7. Drawing Lots

Baumbach Tie Break

This is very simple in that it awards the tie to the player with the most wins to encourage positive play rather than settling for draws.

Sonneborn-Berger Tie-Break

This requires a simple arithmetical calculation. For each tied player add the whole score of each opponent they beat to half the score of each opponent they drew with. This aims to reward players who have scored best against stronger opposition in their Division.

Examples

If we look at the two ties in Division 2 in the 2011/2012 season Nye has 2 wins and Hall 3 wins so Hall would win this tie on the Baumbach Tie Break, reversing the result from our present system. The other tie (Williamson & Partridge) is not broken by Baumbach as both players have one win each. So moving on to Sonneborn-Berger (S-B) we see that Williamson has beaten Hall and so scores Hall's 3 points. He has drawn with Nye & Partridge and so scores half of each of their points - $1\frac{1}{2}$ and 1 respectively giving him a S-B score of $5\frac{1}{2}$. Partridge has beaten Couch and so scores his $1\frac{1}{2}$ and has drawn with Nye & Williamson and so scores half of their points - $1\frac{1}{2}$ and 1 giving him a S-B score of 4, thus Williamson wins this tie, which is no change from our present criteria. Had Baumbach not settled the tie for Nye & Hall S-B would also have given the tie to Hall (work this out yourself for the exercise!) so it perhaps just as well that with the withdrawal of Justin Caldwell I have been able to promote both players to Division 1 for the coming season.

THREE PLAYER CHESS



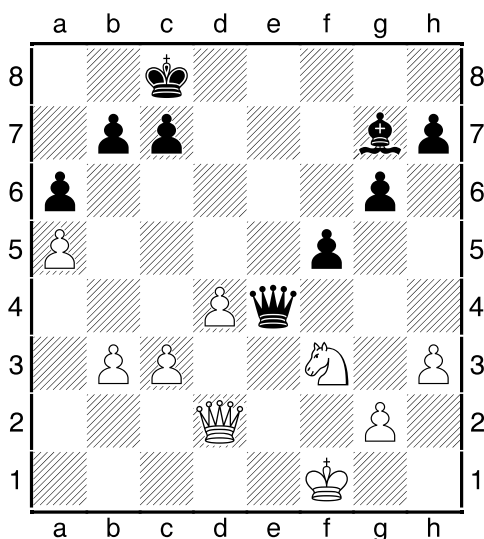
I am grateful to my church organist, who spotted this on Amazon (it seems to have disappeared for now, but might return): "Play chess with 3 people at the same time with this three player chess game. Without compromising any of the rules, strategy, or fun of Chess, this variant board has been developed that accommodates three players. The only changes from conventional chess are some protocol issues that must be followed to maintain order where the teams border each other, which is simple and necessary. The complexities of the third player are infinite. Your threatened

piece may be allowed to maintain occupancy as your position is beneficial to the threatening player. But how long can it last? This scenario may exist all over the board. There are multiple trust and doubt situations among all players".

Michael Thistlewood Richard Cleaves [C77]

Clergy Division 3 - 2011-2012

1.e4 e5 2.♘f3 ♘c6 3.♙b5 a6 4.♙a4 ♘f6 5.d3 d6
6.h3 ♙e6 7.c3 ♚e7 8.♙b3 0-0-0 9.♙e3 g6 10.0-0
♙g7 11.a3 ♘a5 12.♘bd2 ♙xb3 13.♘xb3 ♘xb3
14.♚xb3 d5 15.exd5 ♘xd5 16.d4 ♘xe3 17.fxe3
exd4 18.exd4 ♚he8 19.♚fe1 ♚d7 20.a4 f5
21.♙f1 ♚e7 22.♚xe7 ♚xe7 23.♚e1 ♚d7 24.♚a2
♚e8 25.b3 ♚xe1+ 26.♘xe1 ♚e8 27.♘f3 ♚e3
28.♚d2 ♚e4 29.a5 Diagram



The game had looked rather drawish for a bit and after this move I offered a draw - completely missing his next move which lost me a pawn. 29... ♚b1+ 30.♙f2 ♚xb3 I nearly resigned but then I realised that I had a move which would give mating threats. Richard feared at this point that by conceding the open e file he had gained short term advantage at the cost of the game.

31.♚e3 b6 32.axb6 cxb6 33.♚e8+ ♙b7 34.♚d7+ ♙b8 35.♚xg7

Now I have got rid of the Bishop and eased the pressure 35...a5 36.♚e5+ Fritz recommends Qh8+ and then pick off the pawns. I think this would have won the game 36...♙b7 37.♚e7+ ♙a6 38.♚e2+ ♙b7 39.♚e7+ ♙a6 40.♚e2+ Here I offered another draw 40...♚b5 41.♘d2 ♚xe2+ 42.♙xe2 a4 43.♙d1 b5 44.♙c2 ♙b6 45.♙b2 ♙c6 46.♙a3 f4 47.h4 h6 48.♙b4 g5 49.hxg5 hxg5 50.♙a3 g4 51.♙b4 ♙d5 52.♙a3 ♙c6 53.♙b4 ♙d5 54.♙a3

For the last few moves we were treading on egg shells. A single wrong move would be fatal. At the last Richard felt we were locked into a repeated position. If he did anything other, I would win; if I did anything other, he would win. In the end a hard fought draw. But someone else may see another way of playing this ending! ½-½

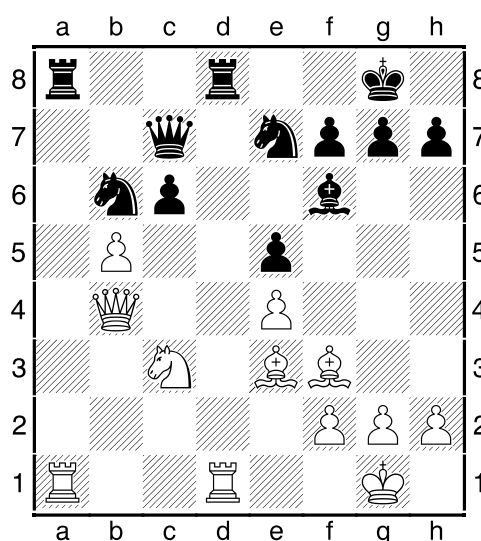
There was an added complication to this game as I only needed a draw to get promotion – Richard needed a win to get into a three-way tie for promotion which would have given Bruce a headache. We both enjoyed the game, particularly the endgame which was very interesting.

Michael Williamson David Nye [B12]

Division 2 - 2011-2012

1.e4 c6 2.d4 d6 3.♘f3 ♙g4 4.♙e2 ♘d7 5.0-0 e6
6.c4 ♙e7 7.♘c3 ♙xf3 8.♙xf3 ♙f6 9.♙f4 e5
10.♙e3 ♘e7 11.c5 dxc5 12.dxc5 0-0 13.b4 ♚c7
14.a4 ♚ad8 15.♚b3 a6 16.b5 ♚b8 17.♚fd1 ♚fd8
18.♚c4 axb5 19.axb5 b6 20.cxb6 ♘xb6 21.♚b4
♚a8 ½-½

Diagram

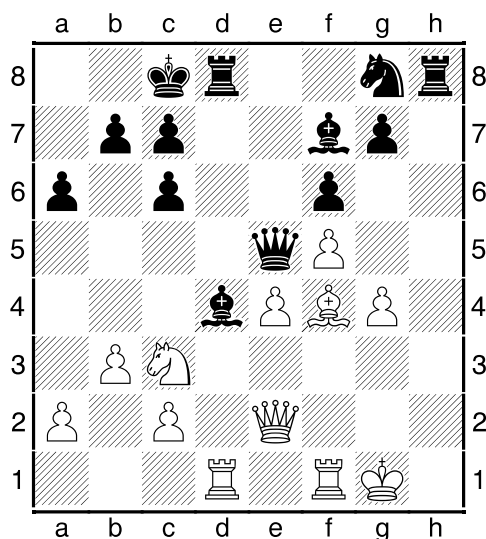


Bruce Carlin
Stanley Hall [C68]

Division 2 - 2011-2012

1.e4 e5 2.♘f3 ♘c6 3.♙b5 a6 4.♙xc6 dxc6 5.0-0 ♙g4 6.h3 ♙h5 7.g4 ♙g6 8.d3 f6 9.♘c3 ♗d7 10.d4 0-0-0 11.♙e3 h5 12.dxe5 ♗e6 13.♘d4 ♗xe5 14.f4 ♗e7 15.f5 ♙f7 16.♗e2 ♗e8 17.♗ad1 hxg4 18.hxg4 ♙c5 19.b3 ♗e5 20.♙f4 ♙xd4+

Diagram



21.♗f2 ♙xf2+ 22.♗xf2 ♗xc3 23.♗xd8+ ♙xd8 24.♗a7 ♗e1+ 25.♙g2 ♗h1+ 26.♙f2 ♗h2+ 27.♙xh2 ♗xh2+ 28.♙e3 0-1

Scheming Mind
David Lowe [C92]

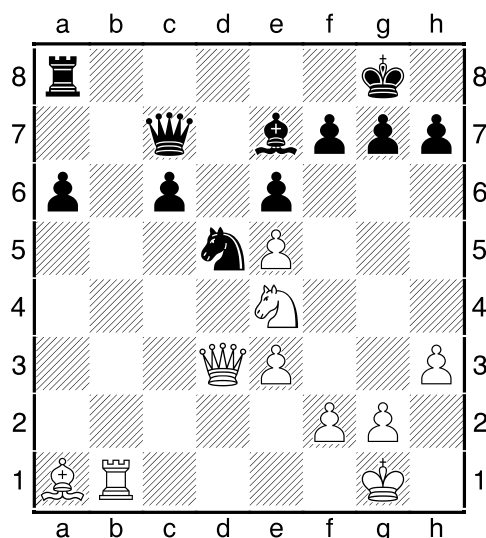
1.e4 e5 2.♘f3 ♘c6 3.♙b5 a6 4.♙a4 ♘f6 5.0-0 b5 6.♙b3 ♙b7 7.d3 ♙e7 8.♗e1 0-0 9.c3 d6 10.h3 h6 11.d4 ♗e8 12.♘bd2 ♘d7 13.a3 exd4 14.cxd4 ♙f6 15.♘f1 a5 16.♘g3 a4 17.♙d5 ♘b6 18.♙xc6 ♙xc6 19.d5 ♙d7 20.♘h5 ♘c4 21.♘xf6+ ♗xf6 22.♗a2 c6 23.♗a1 ♘xb2 24.♙xb2 ♗xb2 25.dxc6 ♙xc6 26.♗d2 ♗f6 27.♗d3 ♙xe4 28.♗xb5 ♗eb8 29.♗e2 d5 30.♗ac1 ♗b2 31.♘d2 ♗g5 32.♘xe4 ♗xc1 33.♘f6+ ♙h8 34.♗xc1 ♗xe2 35.♘xd5 ♗b2 36.g4 ♗b3 37.♗c3 ♗d8 38.♗c5 ♗xh3 39.♘c3 ♗d4 40.♙g2 ♗h4 41.f3 ♗d2+ 42.♙g3 g5 43.♘e4 ♗d8 44.♗c4 ♗f8 45.♘f6 ♙g7 46.♗c6 ♗d8 47.♘h5+ ♗xh5 48.gxh5 ♗d3 49.♙g4 ♗xa3 50.♗a6 ♗a1 51.♙f5 a3 52.f4 a2 53.fxg5 ♗f1+ 54.♙g4 a1♗ 55.gxh6+ ♙h7 0-1

David Hulme
Justin Caldwell [D15]

Division 1 2011-2012

1.d4 d5 2.c4 c6 3.♘f3 ♘f6 4.♘c3 a6 5.e3 b5 6.b3 ♙g4 7.♙e2 e6 8.0-0 ♘bd7 9.h3 ♙h5 10.♗c2 ♙e7 11.♙b2 0-0 12.♗fd1 ♗c7 13.a3 bxc4 14.bxc4 ♗fb8 15.♗ab1 ♙g6 16.♙d3 ♙xd3 17.♗xd3 ♗b7 18.♙a1 dxc4 19.♗xc4 ♙xa3 20.♗xb7 ♗xb7 21.♗b1 ♗c8 22.♘e5 ♘xe5 23.dxe5 ♘d5 24.♘e4 ♗c7 25.♗d3 ♙e7

Diagram



26.♘d6 c5 27.e4 ♘b4 28.♗g3 a5 29.f4 ♙f8 30.f5 exf5 31.exf5 ♗d8 32.f6 c4 33.♗c1 ♗b6+ 34.♙h2 g6 35.♗xc4 ♘d5 36.♗f3 ♙xd6 37.♗xd5 ♙b4 1/2-1/2

Bruce Carlin
Michael Williamson [B22]

Division 2 - 2011-2012

1.e4 c5 2.c3 e6 3.d4 ♘c6 4.♘f3 d6 5.♙b5 a6 6.♙xc6+ bxc6 7.dxc5 dxc5 8.♗xd8+ ♙xd8 9.♘e5 ♙e7 10.♘xc6+ ♙e8 11.0-0 ♙b7 12.♘e5 ♙xe4 13.♗e1 ♘f6 14.♙g5 ♙xb1 15.♗axb1 ♙e7 16.b4 ♘d5 17.♙xe7 ♙xe7 18.bxc5 ♗hc8 19.♗b7+ ♗c7 20.♗xc7+ ♘xc7 21.♗d1 ♗d8 22.♘c6+ 1-0