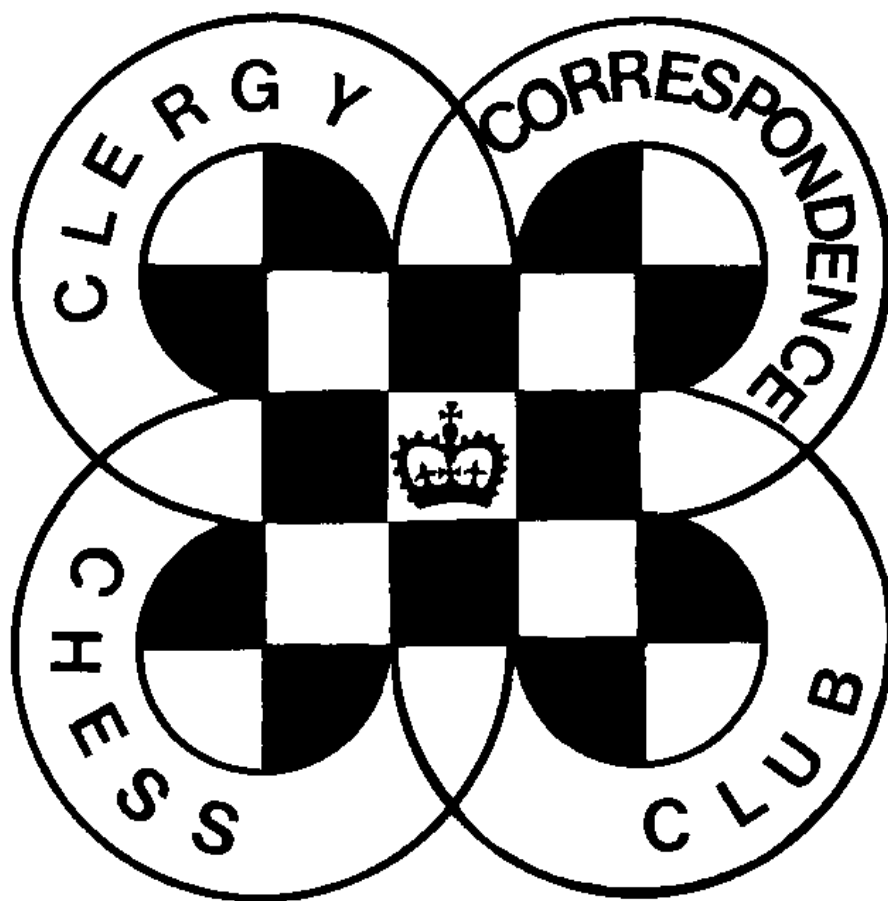


CHESS minister !

The magazine of the

CLERGY CORRESPONDENCE CHESS CLUB

www.bfcc-online.org.uk/memberorg/cccc



June 2012

CLERGY CORRESPONDENCE CHESS CLUB

(Affiliated to the British Federation for Correspondence Chess)

www.bfcc-online.org.uk/memberorg/cccc

- President :** The Revd. Canon Tim Partridge, ☎ 01993 864926
54 Thorney Leys,
WITNEY. OX28 5LS. Email: tim.partridge39@tiscali.co.uk
- Treasurer :** The Revd. Charles Mason, ☎ 01376 322840
10a Marshalls Road,
BRAINTREE. CM7 2LL. Email: revdcom@btinternet.com
- Secretary:** The Revd. Bruce Carlin ☎ 0161 764 1187
St. Peter's Vicarage, St. Peter's Road,
BURY. BL9 9QZ. Email: brucecarlin@cooptel.net

Life Members

W.Alexander
E.A.Bailey
L.Battye
D.Boddy
D.Brown
J.Caldwell
W.P.B.Carlin

R.Cleaves
H.Costello
P.Couch
T.R.Fisher
A.J.Foster
J.Garton
D.S.H.Hulme

M.Joy
J.S.Loxton
W.M.Northcott
D.C.Nye
T.R.Partridge
B.E.Shephard
M.Smith

B.Stevenson
M.J.Thistlewood
P.T.Waterfield
S.Whitmore
M.J.Williamson
A.Yates

Subscriptions

Life membership £70.00
Annual membership £ 5.40

Current Membership Year : October 2011 to September 2012

Under the terms of the Data Protection Act we are exempt from registering providing members are aware of, and do not object to, the use of computers in the keeping of membership records. The Secretary holds members' name, address, phone number, fax and email addresses where provided, their CCCC division, and possible membership of a team, and the Treasurer holds members' subscription records.

CHESS Minister!

June 2012

This issue is timed to be published about a month before the end of our current season and is hopefully a timely reminder to those of you who have not yet completed your games to do so now.

Please make sure that I receive outstanding results or claims for adjudication by 31st July.

Happily, we haven't had any games for adjudication for some years now so I am not repeating the procedure in this magazine, but if anyone does need to submit an adjudication and has not got this information handy, then please request it.

I will be on holiday in early September, but if I get your results on time I should be able to get the new season underway before I go.

*If you are presently a **LEAGUE MEMBER** and have completed your games this year I will assume you wish to continue playing in the league next season. If you do not please let me know by 31st July.*

*If you are a **NON-LEAGUE MEMBER** or if you **WITHDREW** this season you **MUST** tell me by 31st July if you want to be included in the league next season. If you have not played for a while tell me which Division you used to be in and if there is space I will enter you where your strength deserves rather than you starting from the bottom.*

Our thanks to those who have sent in games for publication and to Michael Thistlewood for preparing them for the magazine. Please continue sending in your games, with analysis where possible. Any game score sent will be considered for publication unless you state that you do not want this.

Sufficient results are now in to confirm that Justin Caldwell is Champion once again this year. Following recent ill health Justin feels it is now time to box his Bishop (or whatever the chess equivalent is to hanging up your boots) and withdraw from the league after this season. Whilst this will give others a chance at the title, I suspect it will be some time before his record of 14 championships is broken. But then records are there to be broken – We probably thought Ruggles Fisher's 8 would take a long time to beat, but it was by John Morris who won 10, and now Justin has raised the bar to 14. David Hulme only needs another 10 to beat this!

Bruce Carlin (Secretary)

SCHEMING MIND STANDARD CHESS LEAGUE

This year's campaign got off to a good start with a 6-4 win over Apple Pie B team. We then suffered a reversal, losing to Will's Wonders 4-6. After a bye in round 3 we beat Scotland the Brave (currently 7-0 with 3 games still to finish) and are about to begin Round 5 against The Chess Warriors.

If anyone else would like to join our team in this please let me know.

CCCC AND SCHEMING MIND

If you want to play your games on the Scheming Mind web site next season now is the time to join as this will give you the chance to play a welcome game over the summer before we start our new season. Full details were in the last magazine, but just to refresh your mind I summarise the important points here.

The game is set up on the Scheming Mind site. A diagram of the current position is available and a record of the moves made. You make your move by clicking the piece you wish to move and then clicking its destination square (helpfully all possible destination squares are highlighted as soon as you click a piece). You confirm it by clicking 'submit' and you can add a comment or message if you wish. When your opponent makes a move you receive an email telling you it is your turn and you log on and make your next move. There is an 'analyse' tool which allows you to test out different lines on screen before making your move.

The standard time limit on Scheming Mind is that you start with 30 days on your clock and have 1 day added for each move you make, though you can never have more than 45 days on your clock (if you had 44 days 12 hours and make a move you only go to 45 days 0 hours). Compared with our current time limit this is more generous in games of less than 30 moves, which is probably most of them, but becomes progressively tighter the longer the game continues. You are allowed 28 days holiday in a calendar year, during which your clock is stopped in all games.

You can initially join Scheming Mind as a trial member for free and this allows you to play 50 games before you have to pay anything at all. If you only play your CCCC games that would last you about 8 years! After that the normal price of membership is £15 a year, but we can offer this to members of CCCC for just £3 a year to start with. Given that members of our Scheming Mind Team will use up their initial allocation of games more quickly it seems only fair to offer them their first year's full membership at a lower rate of just £1. You would pay these membership fees to CCCC and we would issue you with a membership code that you would use on the web site.

To have a look at the site or to join as a trial member go to <http://www.schemingmind.com>

On joining you will initially be offered a welcome game by an experienced SM member and it is well worth accepting this as it gives you the chance to get used to using the web site before you start playing in earnest. If you do not want to end up playing loads of games you can limit the number of challenges you are prepared to accept, and if you wish to restrict your activity entirely within CCCC then you can limit your challenges to those on your 'buddy list', which you can create including only members of CCCC.

You must let me know when you join, and if you are using an alias you must let me know that or I will never find you to be able to put you on the CCCC list. I will then list members who have joined SM with their aliases in future editions of CHESS minister!

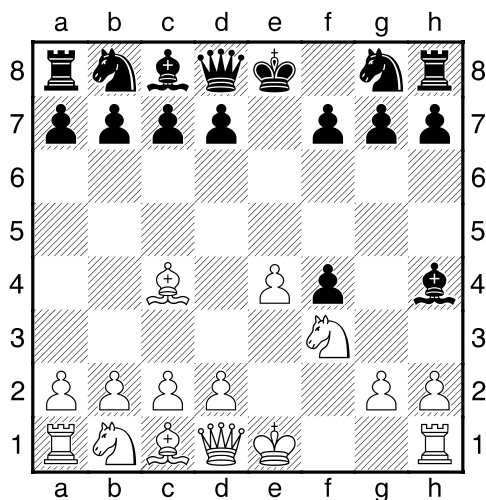
If you want to be available for our Team in the Scheming Mind chess league then let me know this also.

Justin Caldwell Two King's Gambits

For the sake of variety I played the King's Gambit in two of my games this season, not having played the opening for many years.

I read somewhere that the trouble with the King's Gambit for White is that Black has about half a dozen perfectly good defences. Consequently White needs to have done a lot of preparation in OTB play, and so it is quite rare for White to use it. However in correspondence chess that does not apply!

After **1.e4 e5 2.f4 exf4 3.Nf3** both my opponents chose the same defence **3...Be7**. Black threatens a Bishop check at h4. It is wise for White to play **4.Bc4** so that **4...Bh4+** can be answered by **Kf1**, which is safer than having to play **Ke2**. After **4.Bc4**, Black is advised to continue with **4...Nf6**, continuing his development, but both my opponents went for an immediate attack, playing **4...Bh4+**.



I was faced with a difficult situation in both games, but managed to survive.

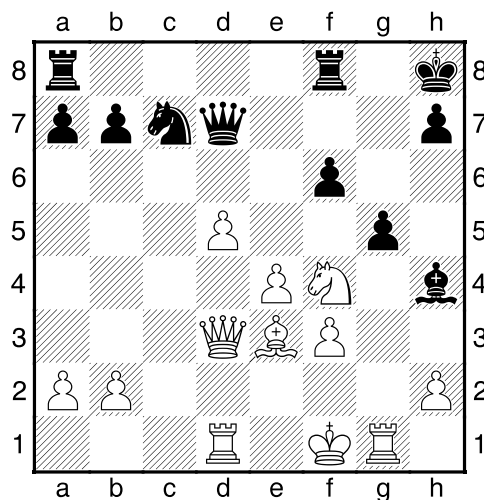
Here are the games:

Justin Caldwell **Antony Foster [C35]** Div.1 2011 – 2012

1.e4 e5 2.f4 exf4 3.♘f3 ♙e7 4.♙c4 ♙h4+ 5.♔f1 d6 6.d4 ♙g4 7.♙xf4 ♘c6 8.♘c3 ♚f6 9.♘d5 ♚xd4 10.♘xc7+ ♔d7 11.♘xd4 ♙xd1 12.♞xd1 ♔xc7 13.♘b5+ 1-0

Justin Caldwell **David Lowe [C35]** Div.1 2011 - 2012

1.e4 e5 2.f4 exf4 3.♘f3 ♙e7 4.♙c4 ♙h4+ 5.♔f1 d5 6.♙xd5 ♘f6 7.♘c3 ♘xd5 8.♘xd5 ♙g4 9.d4 c6 10.♘xf4 0-0 11.♚d3 ♙xf3 12.gxf3 ♘a6 13.♞g1 ♚d7 14.♙e3 ♘c7 15.♞d1 ♔h8 16.d5 cxd5 17.c4 f6 18.cxd5 g5 Diagram

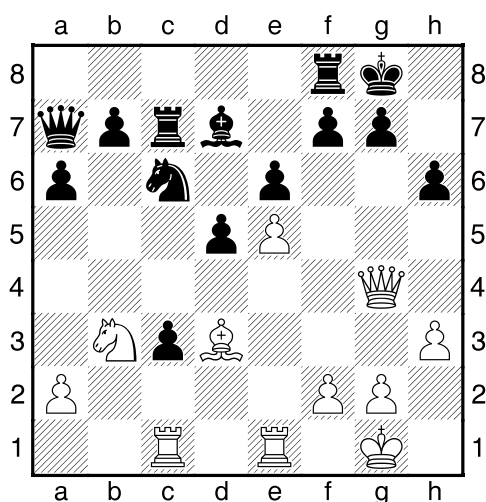


19.♙d4 gxf4 20.♞g4 ♘b5 21.♞xh4 ♘xd4 22.♚xd4 ♚d6 23.♞g4 ♞g8 24.♞xg8+ ♔xg8 25.♞c1 ♚e5 26.♚xe5 fxe5 27.♞c7 b6 28.♔g2 a5 29.♔h3 b5 30.♔g4 b4 31.♔f5 ♞e8 32.d6 a4 33.d7 1-0

Bruce Carlin miriskra [C17] Scheming Mind

One of the joys of correspondence chess on the internet is that it no longer matters where your opponent lives. I remember Ruggles Fisher once telling me it had taken him something like 4 years to complete a game by post against someone in the old Soviet Union. But now it is as quick as playing someone in the next street. So after two games against an opponent in the U.S.A. in Round 1, I found myself playing someone in Belarus in Round 2.

**1.e4 e6 2.d4 d5 3.♘c3 ♕b4 4.e5 c5
5.♗d2 cxd4** This is what comes from following a book opening that you perhaps don't fully understand. BCO suggests that this is sound and the pawn will be won back, but in this case it isn't as my opponent takes a different line. But one pawn is not necessarily fatal.
**6.♗b5 ♗c5 7.♗f3 ♗c6 8.♗g5 ♗ge7
9.♗d3 h6 10.♗xe7 ♖xe7 11.0-0 a6
12.♗a3 ♗xa3 13.bxa3 ♖xa3**
But two are fairly serious.
**14.♖e1 0-0 15.h3 ♖c5 16.♗d2 ♗d7
17.♗b3 ♖a7 18.♖g4 ♖ac8 19.♖ac1
♖c7 20.c3 dxc3** Diagram



Belatedly I realize that I can't recapture as 21.Rxc3 Nxe5 is horrid! So I am now 3 pawns down which probably is fatal.

But here I went for a week's holiday and on return found he had also put in a few days. Whether the refreshment of a holiday outweighs the loss of continuity in correspondence chess I am not entirely sure, and I should probably have thrown in the towel at this point anyway.

But I just have a glimmer of an idea that 21.Qg3..., 22.Bc2..., 23.Qd3 threatens mate, and if Black does 23...g6 then 24.Qg3..., 25.Bxg6 fxc6, 26.Qxc6 with perpetual check is a possibility, and a draw from this position would not be a bad outcome! But of course there are too many ... which Black can fill in, and he does straight away with 21...Ne7 which rather scuppers the cunning plan before it starts!

**21.♖g3 ♗e7 22.♗h2 ♖fc8 23.f4 b5
24.♗c2 a5 25.♖d3 g6 26.♗d4 ♖c4
27.♗f3 b4 28.♗h4** and the perpetual check idea might be back on after all, which it wouldn't have been had Black done 27...Rxf4 preventing this. He does it now, but it is too late.

♖xf4 29.♖g3 ♖xh4 ??

I can't believe this. Has he suddenly seen the perpetual check and panicked? But g5 would have been enough, and at 4 pawns down surely I would have given in.

But then, I wonder, is it a trap? But I can't see one, and figure that since the game is pretty much lost anyway, let's go for it. Besides it still only gives me a Rook for Knight and 4 pawns, but that does even things up a bit, and it soon becomes Rook for 4 pawns which I am sure is in my favour.

30.♖xh4 ♗g7 31.♖xe7 ♖f8 32.♖f1 ♖c7
I must be careful of Qxe5+, and also wonder whether I should be going for mate or evening up the pawn situation since Black does still have dangerous advanced pawns on the Queen side. But since move 29 my opponent's game seems to have gone to pieces, which is ironic since in our other game he has just turned a fairly even position into a winning one for him. But this one ends,

**33.♖f6+ ♗g8 34.♗xg6 ♗e8 35.♖ce1 d4
36.♗d3 ♗c6 37.♖xh6 f5 38.♖xe6+ 1-0**

mikken

lemme howdt [C77]

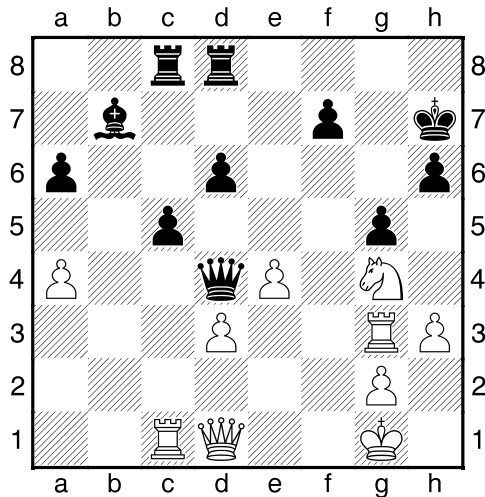
Standard Chess League - Season

Seven SchemingMind.com,

04.01.2012

1.e4 e5 2.♘f3 ♘c6 3.♙b5 a6 4.♙a4
 ♘f6 5.d3 ♙c5 6.h3 d6 7.a3 0-0 8.0-0
 h6 9.♘c3 b5 10.♙b3 ♖e7 11.♞e1 ♙b7
 12.♙e3 ♙xe3 13.♞xe3 ♘d4 14.♘e2
 ♘xb3 15.cxb3 c5 16.♞c1 ♞ac8 17.♘h2
 ♞fd8 18.♞g3 g6 19.f4 exf4 20.♘xf4 g5
 21.♘h5 ♘h7 22.♘xf6+ ♖xf6 23.♘g4
 ♖xb2 24.a4 bxa4 25.bxa4 ♙d4+

Diagram



I am a pawn down and his position looks better.

26.♘h2 ♙c6 27.a5 ♙b5 28.♞f3 ♞c7
 29.♘f2 ♘g6 30.♘h1 d5 31.♘g3 dxe4
 32.♘xe4 c4

There are a number of threats and in this sort of position it is easy to get into a negative frame of mind and just concentrate on defence.

33.♞f6+ ♘g7 34.♖h5

I decide to go for it and stop worrying!

♖e5+ 35.♘h1 ♞xd3 36.♖xh6+ ♘g8
 37.♘g5 ♖d5 38.♖h7+ ♘f8 39.♖h8+
 ♘e7 40.♞e1+ ♘d7 41.♖e8#

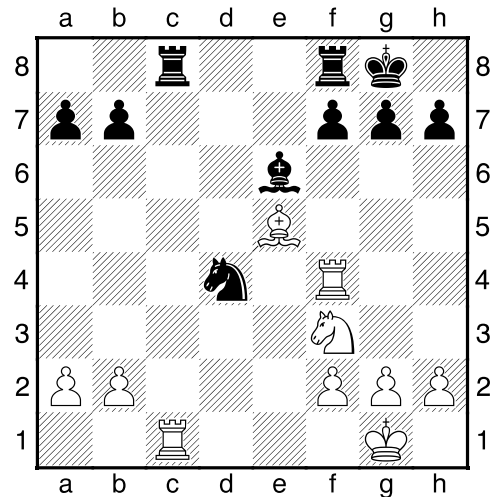
It paid off! In case you are wondering – mikken is Michael from Kendal!

David Lowe

Andrew Yates [B33]

Div.1 2011 - 2012

1.e4 c5 2.♘f3 ♘c6 3.d4 cxd4 4.♘xd4
 ♘f6 5.♘c3 e5 6.♘f3 ♙b4 7.♙d3 d5
 8.♙d2 ♙xc3 9.♙xc3 dxe4 10.♙xe4
 ♖xd1+ 11.♞xd1 ♘xe4 12.♙xe5 ♘b4
 13.0-0 ♙e6 14.♞d4 ♘xc2 15.♞xe4 0-0
 16.♞c1 ♞ac8 17.♞f4 ♘d4 Diagram



18.♞e1 ♘c2 19.♞c1 ♞fe8 20.♙c3 ♞cd8
 21.h3 ♙xa2 22.♞xc2 ♞d1+ 23.♘h2 f6
 24.♞d4 ♙b3 25.♞cd2 ♞xd2 26.♘d2
 ♙e6 27.♞e4 ♘f7 28.f3 a6 29.h4 h6
 30.♞e1 g5 31.♘e4 ♞g8 32.♘d6+ ♘e7
 33.♘xb7 ♞c8 34.♙b4+ 1-0

Wilf Alexander

Justin Caldwell [D43]

Div.1 2011 - 2012

1.d4 d5 2.c4 e6 3.♘c3 ♘f6 4.♘f3 c6
 5.♙g5 h6 6.♙h4 dxc4 7.e4 g5 8.♙g3
 b5 9.♙e2 ♙b7 10.h4 g4 11.♘e5 h5
 12.0-0 ♘bd7 13.♖c2 ♘xe5 14.♙xe5
 ♙g7 15.♞ad1 0-0 16.♙g3 ♘d7 17.f3
 ♖b6 18.♘h1 c5 19.d5 ♘e5 20.fxg4
 hxg4 21.♖c1 ♘d3 22.♙xd3 cxd3
 23.♞xd3 b4 24.♘a4 ♖b5 25.♘xc5
 ♞ac8 26.♙d6 ♞xc5 27.♙xc5 ♖xd3
 28.♙xf8 ♙xf8 29.♖f4 f5 30.exf5 ♙xd5
 31.♖xg4+ ♘h7 32.♞f4 ♖b1+ 33.♘h2
 exf5 34.♖h5+ ♘g7 35.♖g5+ ♘h7
 36.♖d8 ♙h6 37.♖d7+ ♘h8 38.♞xf5
 ♙xa2 39.♖d4+ ♘h7 40.♖xa7+ ♘g6
 41.♞f2 ♖e1 42.♖d4 ♘h7 43.♞f5 ♖e7
 1/2-1/2

CLERGY CORRESPONDENCE CHESS CLUB RESULTS 2011 / 2012

DIVISION 1	C	H	L	A	Y	S	F	Pts	%
Caldwell		½	1	½	1	1	1	5 / 6	83
Hulme	½		1	½		1	0	3 / 5	60
Lowe	0	0		0	1	0	0	1 / 6	17
Alexander	½	½	1		1	1	½	4½ / 6	75
Yates	0		0	0		0		0 / 4	0
Smith	0	0	1	0	1		½	2½ / 6	42
Foster	0	1	1	½		½		3 / 5	60

DIVISION 2	N	C	P	H	C	W		Pts	%
Nye		0	½		1	½		2 / 4	50
Carlin	1		1	0	½	1		3½ / 5	70
Partridge	½	0		0	1	½		2 / 5	40
Hall		1	1		1	0		3 / 4	75
Couch	0	½	0	0		1		1½ / 5	30
Williamson	½	0	½	1	0			2 / 5	40

DIVISION 3	C	L	B	T	P	S		Pts	%
Cleaves		0	V		1			1 / 2	50
Loxton	1		V	0	1			2 / 3	67
Boddy	V	V		V	V	V		void	
Thistlewood		1	V		1			2/2	100
Procter	0	0	V	0				0/3	0
Shephard			V						

Results table to 27 June 2012.

Congratulations to Justin Caldwell who is now confirmed as CCCC Champion for 2011 / 12. With only a few more results outstanding in Division 1 no one can now catch his score. At the other end of this Division David Lowe and Andrew Yates are confirmed as relegated, so the remaining games are only to sort out the other positions.

In Division 2 Bruce Carlin is confirmed as promoted, while the one outstanding game between Stanley Hall and David Nye will decide which of them goes up with him. Peter Couch is relegated, but it could be any of Nye, Partridge or Williamson who go down with him.

David Boddy has withdrawn following serious surgery, but hopes to be back next season, and it seems fairly certain that Brian Shephard will also default in Division 3. With one result outstanding we could end up with a three way tie in this Division, making promotion difficult to work out, but at least no one gets relegated from this Division.

The season ends in a month so this will be the last update. I will email final results (and put them on the web site) as soon as I have them, and they will be printed in the October magazine, but if anyone wants a printed copy sooner than that a stamped addressed envelope will bring you a copy.