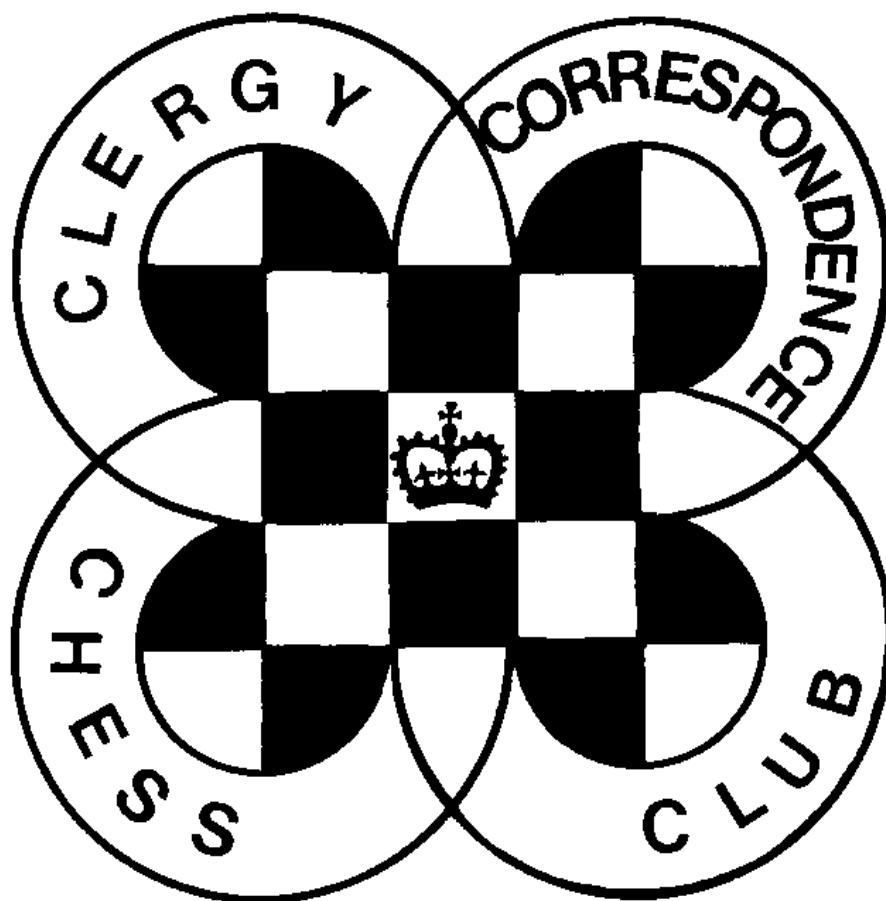


CHESS minister !

The magazine of the

CLERGY CORRESPONDENCE CHESS CLUB

www.bfcc-online.org.uk/memberorg/cfcc



February 2012

CLERGY CORRESPONDENCE CHESS CLUB

(Affiliated to the British Federation for Correspondence Chess)

www.bfcc-online.org.uk/memberorg/cccc

President : The Revd. Canon Tim Partridge, ☎ 01993 864926
54 Thorney Leys,
WITNEY. OX28 5LS. Email: tim.partridge39@tiscali.co.uk

Treasurer : The Revd. Charles Mason, ☎ 01376 322840
10a Marshalls Road,
BRAINTREE. CM7 2LL. Email: revdcom@btinternet.com

Secretary: The Revd. Bruce Carlin ☎ 0161 764 1187
St. Peter's Vicarage, St. Peter's Road,
BURY. BL9 9QZ. Email: brucecarlin@cooptel.net

Life Members

W.Alexander
E.A.Bailey
L.Battye
D.Boddy
D.Brown
J.Caldwell
W.P.B.Carlin

R.Cleaves
H.Costello
P.Couch
T.R.Fisher
A.J.Foster
J.Garton
D.S.H.Hulme

M.Joy
J.S.Loxton
W.M.Northcott
D.C.Nye
T.R.Partridge
B.E.Shephard
M.Smith

B.Stevenson
M.J.Thistlewood
P.T.Waterfield
S.Whitmore
M.J.Williamson
A.Yates

Subscriptions

Life membership £70.00
Annual membership £ 5.40

Current Membership Year : October 2011 to September 2012

Under the terms of the Data Protection Act we are exempt from registering providing members are aware of, and do not object to, the use of computers in the keeping of membership records. The Secretary holds members' name, address, phone number, fax and email addresses where provided, their CCCC division, and possible membership of a team, and the Treasurer holds members' subscription records.

In this magazine you will find results so far received from the current season, along with the Club's accounts, as well as some games as usual.

Please report results as your games finish, and send in any games that you think are fit for publication, annotated wherever possible. There are only two pages of games in this issue for the simple reason that this is all we have.

Thanks as always to Michael Thistlewood who has typed up the games for publication.

Bruce Carlin (Secretary)

CCCC AND SCHEMING MIND

As you know we have been entering a Team in the Scheming Mind Standard Chess League over the last year or so and this has led on to a very generous offer from them to allow us to use their web site to play our own internal matches.

In the long term we would be able to transfer our entire league over to Scheming Mind, which would maintain the tables as well as hosting our games, but that would require all of our active members to have internet access. In the meantime there is nothing to stop members playing their CCCC games on the Scheming Mind web site rather than by email or phone.

Any of you who have played chess on a web server will know how it works, but for those who don't, a brief summary. The game is set up on the Scheming Mind site. A diagram of the current position is available and a record of the moves made. You make your move by clicking the piece you wish to move and then clicking its destination square (helpfully all possible destination squares are highlighted as soon as you click a piece). You confirm it by clicking 'submit' and you can add a comment or message if you wish. When your opponent makes a move you receive an email telling you it is your turn and you log on and make your next move. There is an 'analyse' tool which allows you to test out different lines on screen before making your move. This avoids you having to keep several chess sets around to keep track of all your games as it is all maintained on the web site, where you can also do your analysis.

The standard time limit on Scheming Mind is that you start with 30 days on your clock and have 1 day added for each move you make, though you can never have more than 45 days on your clock (if you had 44 days 12 hours and make a move you only go to 45 days 0 hours). Compared with our current time limit this is more generous in games of less than 30 moves, which is probably most of them, and then becomes progressively tighter the longer the game continues. However, in practice it isn't quite as simple as that in that the clock runs in real time so there is no same day reply which currently costs no time, but then neither does it then accumulate in whole days. You are allowed 28 days holiday in a calendar year, during which your clock is stopped in all games. The one downside for some of our slower members is that a computer has no generosity of spirit as some of our human members have, and the clock will time you out and you will lose the game if you over step the limit.

Obviously there is a cost involved in this as somebody has to run this site, but we have received an incredibly generous offer from them for our members to join. You can initially join Scheming Mind as a trial member for free and this allows you to play 50 games before you have to pay anything at all. If you only play your CCCC games (though you may very well chose to play more once you have joined) that would last you about 8 years! After that the normal price of membership is £15 a year, which itself is not unreasonable, but we can offer this to members of CCCC for just £3 a year to start with. Given that members of our Scheming Mind Team will use up their initial allocation of games more quickly it seems only fair to offer them their first year's full membership at a lower rate of just £1. You would pay these membership fees to CCCC and we would issue you with a membership code that you would use on the web site.

To have a look at the site or to join as a trial member go to <http://www.schemingmind.com>

On joining you will initially be offered a welcome game by an experienced SM member and it is well worth accepting this as it gives you the chance to get used to using the web site before you start playing in earnest. If you do not want to end up playing loads of games you can limit the number of challenges you are prepared to accept, and if you wish to restrict your activity entirely within CCCC then you can limit your challenges to those on your 'buddy list', which you can create including only members of CCCC.

You **must** let me know when you have joined, and if you are using an alias (which many players do) you **must** let me know what this is or I will never find you on the site to be able to put you on the CCCC list. I will then list members who have joined SM with their aliases in future editions of CHESS minister! If you want to be available for our Team in the Scheming Mind chess league then let me know this also.

Scheming Mind also operates a Ratings system so we will once again have individual ratings. They use the Glicko system which gives a rating along with an indication of how reliable it is. Your rating is the first figure after your name, but in parentheses is another figure (the Rating Deviation) which indicates how reliable this is. Basically, if you have only played a few games you get a rating but it isn't especially reliable so the RD will be high (the maximum is 350 indicating a rating which is very provisional), but as you play more games your rating becomes more reliable and RD figure falls (the lowest is 30).

I think this reasonably well covers the basics of how Scheming Mind works, but if anyone has any specific questions please get in touch with your secretary and I will endeavour to answer you.

SCHEMING MIND STANDARD CHESS LEAGUE

In our final match of last season (which was still outstanding at the time of our last magazine) we beat SCCA 5½-4½ to end up 4th out of 8 in Division 5A, a creditable result for our first season in this championship. This season we have been moved sideways to Division 5C. The first two rounds are currently underway and we lead Apple Pie B Team 5-3 with two to finish, while no games have so far been completed in our second round match against Will's Wonders. We have a bye in round 3 as there are only 7 teams in our Division. The more people who join our team, the fewer games we each have to play, so if anyone else would like to join please let me know.

CCCC ACCOUNTS

Income and Expenditure Account for year ended 31.7.11

	<u>2010/11</u>	<u>(2009/10)</u>		<u>2010/11</u>	<u>(2009/10)</u>
<u>Income £</u>			<u>Expenditure £</u>		
Subscriptions	35.77	(20.00)	Secretary's Expenses		
Bank Interest	2.14	(2.90)	Magazine	38.92	(37.00)
Advertising	4.00		Other postage		(2.37)
			Treasurer's Expenses	1.68	(1.90)
Deficit for year	13.69	(33.37)	BFCC Affiliation	15.00	(15.00)
	<u>55.60</u>	<u>(56.27)</u>		<u>55.60</u>	<u>(56.27)</u>

Balance Sheet as at 31.7.11

	£
Balances brought forward	1086.63
Less: deficit for year	13.69
TOTAL NET ASSETS	<u>1072.94</u>
<u>Represented by:</u>	
Santander UK plc current account	23.85
Santander UK plc deposit account	2.96
NS&I Investment Account (Life Membership)	1046.13
	<u>1072.94</u>

Treasurer's Report on the 2010/11 Accounts

Subscriptions are up this year, thanks to the arrival of one new annual member and the payment of 2 years' subscriptions by our Canadian Associate Member, who joined after the end of our 2009/10 financial year but before the start of the next playing season. (That is why last year's report stated that all subs were fully paid up.)

The deficit has fallen by almost £20 to £13.69, though it is still quite large in relation to total expenditure of £55.60. I would continue to assure members that there is no cause for alarm in view of our total assets of £1072.94. The key factor is interest rates: they have slumped still further, so that this year we earned the negligible amount of £2.14. Just two years ago it was £35.43, and long gone are the days when the interest on a Life Sub serviced the annual membership costs, even though these have been reduced with the use of electronic distribution.

There is nothing worthy of remark on the Expenditure side, the total being virtually identical to the previous year's.

There were no deposits in the Life Membership fund other than the crediting of interest, nor, I am surprised and pleased to say, withdrawals, though it seems almost certain that I shall have to withdraw another £50 or so in 2011/12. At the end of the financial year the fund stood at £38.75 per Life Member (last year: £37.29), which represents over 20 years' funding at current costs.

As I write in January, all subs were paid up at the end of the financial year, and there are no current arrears either. This is a first in my 18 years as your Treasurer! Well done, everybody, and thank you.

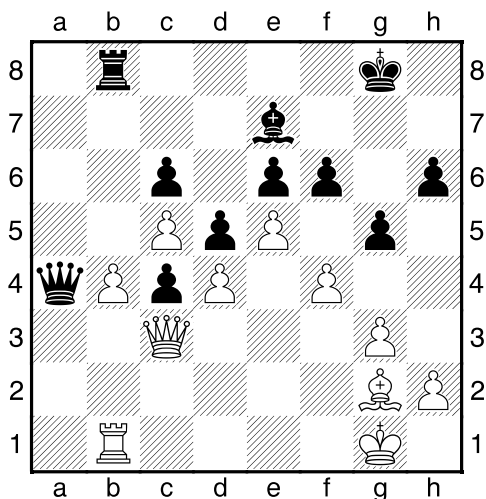
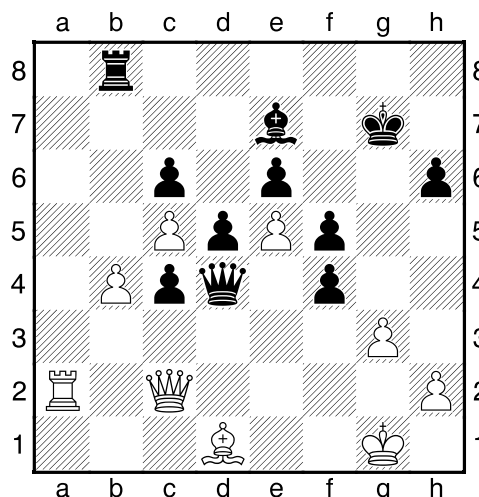
Charles Mason – Hon Treasurer, CCCC

Tim Partridge – Bruce Carlin [E01]

Division 2 - 2011–2012

1.d4 ♘f6 2.c4 e6 3.g3 c6 4.♙g2 d5 5.c5
 ♙e7 6.♗c3 0-0 7.♗f3 ♖bd7 8.♙f4 b6
 9.b4 ♙a6 10.♗e5 ♗xe5 11.♙xe5 h6
 12.e4 ♙c4 13.♙xf6 ♙xf6 14.e5 ♙e7
 15.♗a4 b5 16.♗b2 a5 17.a3 axb4 The
 first pawn is finally taken after 17 moves, but
 Black ends up with doubled pawns on the c
 file. 18.♗xc4 bxc4 19.axb4 ♖xa1
 20.♙xa1 ♙a8 21.♙c3 ♙a4 22.0-0 ♖b8
 23.♖b1 f6 24.f4 g5

Diagram



Somewhere around here I suggested to Tim
 that the game was stagnating. It wasn't a
 formal draw offer, but a strong hint that we
 might agree one.

He said he would like to play on a bit.

25.♙f3 ♖g7 26.♙h5 f5 27.♙d1 ♙a2
 28.♖b2 ♙a1 29.♙c2 gxf4 30.♖a2 ♙xd4+

Diagram

And suddenly White's pawns begin to fall.

31.♙g2 ♖xb4 32.♙f3 fxf3 33.hxf3 ♙xc5

That is five pawns in as many moves with the
 loss of only one!

34.♙d1

I did not understand this. With such a heavy
 pawn deficit, surely swapping off pieces is
 the last thing White should be doing.

34...♙xd1 35.♙xd1 ♙d4

With a view to Rb2+ next, forcing the Rook
 exchange and surely leaving my position won,
 but Tim makes a mistake and gives me the
 Rook without exchange, and that really is
 that.

36.♖a7+ ♙xa7 0-1

I have made similar blunders. How often we
 forget that Bishops can go backwards!!
 Games Editor.

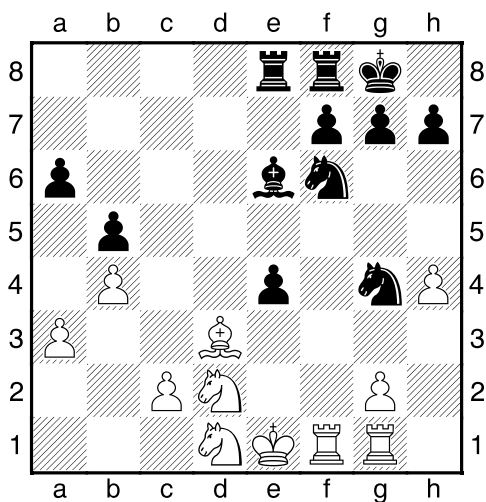
John Loxton - M.Thistlewood [B54]

Clergy Division 3 - 2011–2012

1.e4 c5 2.♘f3 d6 3.d4 cxd4 4.♗xd4 e5
5.♗b5 a6 6.♗5c3 ♕e6 7.♕d3 ♗f6 8.h3
♙e7 9.♙e3 ♗bd7 10.♗d2 0-0 11.f4 exf4
12.♙xf4 ♗e8 13.♖e2 ♕g5 14.♙xg5 ♖xg5
15.h4 ♖g3+ 16.♖f2 ♖xf2+ 17.♗xf2 ♗e5
18.♖af1 ♗g4+ 19.♗e1 b5 20.b4 ♗ef6

The position looks fairly even, but Fritz gives a slight advantage to Black

21.♖hg1 d5 22.♗d1 ♖ae8 23.a3 dxe4
Diagram



Fritz gives more of an advantage to Black. Black's position looks more dangerous and the Knights become a menace!

24.♕e2 e3 25.♗f3 ♕c4 26.♗d4 ♕xe2
27.♗xe2 ♖d8 28.♖f3 ♖fe8 29.♗xe3

I think the Knight should have left the pawn alone.

29...♗xe3 30.♗f2 ♗xc2 31.♗c1 ♖d2+
32.♗g3 ♗e4+ 33.♗h2 ♗f8

To avoid back rank mate.

34.♗a2 ♗f2 35.♖f1 ♗g4+ 36.♗h3 ♗e5
37.♖g3 ♖d3 38.♖xd3 ♗xd3 39.♗c3

♗xa3 40.♖a1 ♖e3+ 41.♗h2 ♗c2
42.♖xa6 ♗cxb4 43.♖a5 ♗f2 44.♖a8+

I began to get worried here and I wondered if I had thrown it away.

44...♗e7 45.♗xb5

I thought of Rh3+ but then Kg1 and my Knight is attacked. Then I thought of Ng4 without realising that would mean mate next move. So it is possible to win through ignorance as well as to lose in ignorance!!

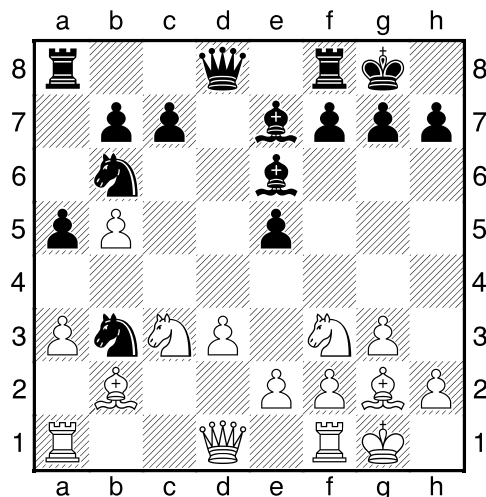
45...♗g4+ 0-1

Mike Smith – Justin Caldwell [A29]

Division 1 - 2011–2012

1.c4 ♗f6 2.♗c3 e5 3.♗f3 ♗c6 4.g3 d5
5.cxd5 ♗xd5 6.♕g2 ♗b6 7.0-0 ♕e7 8.a3
0-0 9.b4 ♕e6 10.d3 a5 11.b5 ♗d4
12.♕b2 ♗b3

Diagram



13.♖b1 f6 14.♗d2 ♗xd2 15.♖xd2 ♗c4
16.♖c1 ♗xb2 17.♖xb2 ♖b8 18.a4 ♕b4
19.♗e4 ♖e7 20.♗d2 ♖fd8 21.♗c4 e4
22.♖c2 exd3 23.exd3 b6 24.♖fd1 ♖d4
25.♗e3 ♖f7 26.f4 ♖e8 27.♕e4 ♕c5
28.♖e1 ♕d5 29.♖f1 ♖dxe4 0-1

**CLERGY CORRESPONDENCE CHESS CLUB
RESULTS 2011 / 2012**

DIVISION 1	C	H	L	A	Y	S	F	Pts	%
Caldwell			1		1	1	1	4/4	100
Hulme			1					1/1	100
Lowe	0	0		0		0	0	0/5	0
Alexander			1					1/1	100
Yates	0							0/1	0
Smith	0		1					1 / 2	50
Foster	0		1					1 / 2	50

DIVISION 2	N	C	P	H	C	W		Pts	%
Nye		0			1			1/2	50
Carlin	1		1		1/2			2 1/2 / 3	83
Partridge		0			1			1 / 2	50
Hall					1			1/1	100
Couch	0	1/2	0	0				1/2 / 4	13
Williamson									

DIVISION 3	C	L	B	T	P	S		Pts	%
Cleaves									
Loxton				0	1			1 / 2	50
Boddy									
Thistlewood		1			1			2/2	100
Procter		0		0				0/2	0
Shephard									

Perhaps rather more results than I might expect by early February, though there are still many to come that could change the situation completely.

Justin Caldwell looks to be back to his old form and heading for another championship, though others with fewer results in could yet challenge him. David Lowe meanwhile is heading from hero to zero with a terrible set of results thus far.

A closer position in Division 2 so far, Bruce Carlin seemingly getting the better of the earlier results, but there is still a long way to go, and, albeit with only one result in, Stanley Hall has got 100% at present.

Too few results in from Division 3 for any real picture to emerge, though Michael Thistlewood, currently on 100% is making the early running.

I will begin sending out monthly results updates to those on email, and post them on our web site.

Do please let me have your results as they come in.