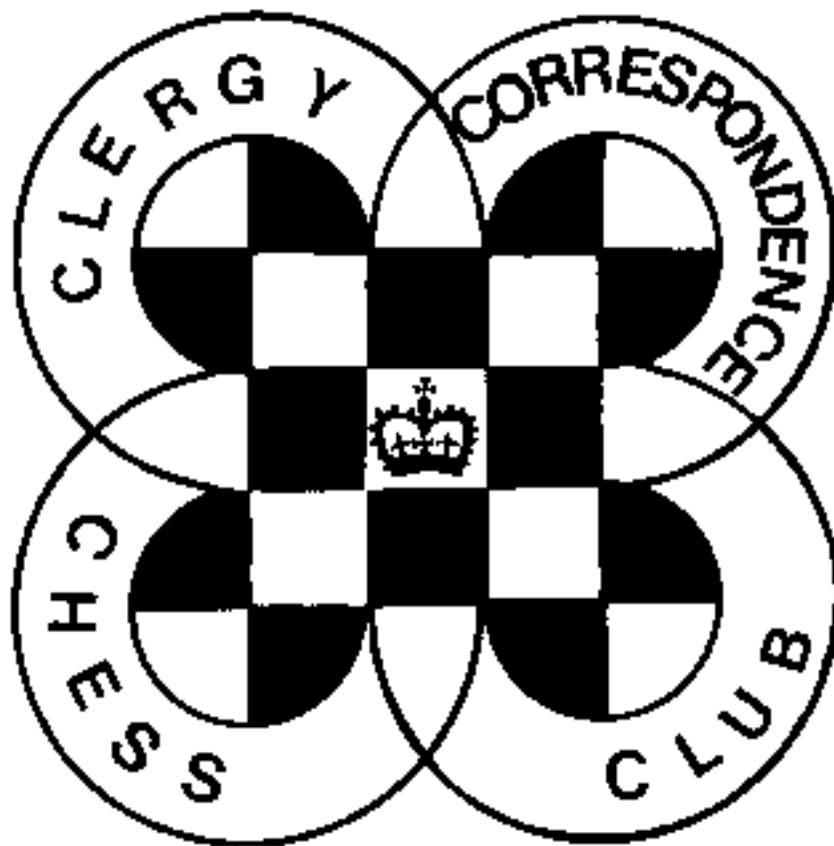


# CHESS minister !

The magazine of the

**CLERGY CORRESPONDENCE CHESS CLUB**

[www.bfcc-online.org.uk/memberorg/cccc](http://www.bfcc-online.org.uk/memberorg/cccc)



## October 2011

# CLERGY CORRESPONDENCE CHESS CLUB

(Affiliated to the British Federation for Correspondence Chess)

[www.bfcc-online.org.uk/memberorg/cccc](http://www.bfcc-online.org.uk/memberorg/cccc)

- President :** The Revd. Canon Tim Partridge, ☎ 01993 864926  
54 Thorney Leys,  
WITNEY. OX28 5LS. Email: [tim.partridge39@tiscali.co.uk](mailto:tim.partridge39@tiscali.co.uk)
- Treasurer :** The Revd. Charles Mason, ☎ 01376 322840  
10a Marshalls Road,  
BRAINTREE. CM7 2LL. Email: [revdcom@btinternet.com](mailto:revdcom@btinternet.com)
- Secretary:** The Revd. Bruce Carlin ☎ 0161 764 1187  
St. Peter's Vicarage, St. Peter's Road,  
BURY. BL9 9QZ. Email: [brucecarlin@cooptel.net](mailto:brucecarlin@cooptel.net)

## Life Members

W.Alexander	R.Cleaves	M.Joy	B.Stevenson
E.A.Bailey	H.Costello	J.S.Loxton	M.J.Thistlewood
L.Batty	P.Couch	W.M.Northcott	P.T.Waterfield
D.Boddy	T.R.Fisher	D.C.Nye	S.Whitmore
D.Brown	A.J.Foster	T.R.Partridge	M.J.Williamson
J.Caldwell	J.Garton	B.E.Shephard	A.Yates
W.P.B.Carlin	D.S.H.Hulme	M.Smith	

## Subscriptions

Life membership £70.00  
Annual membership £ 5.40

Current Membership Year : October 2011 to September 2012

Under the terms of the Data Protection Act we are exempt from registering providing members are aware of, and do not object to, the use of computers in the keeping of membership records. The Secretary holds members' name, address, phone number, fax and email addresses where provided, their CCCC division, and possible membership of a team, and the Treasurer holds members' subscription records.

This magazine begins the 2011 / 2012 season. Play officially begins on 1st October but you can start straight away without it costing you any time until then. To see who you are playing see the pairings on the loose sheet. Non-league members can make direct contact with another such member or write to me and say they would like a game. Once I have heard from two such players I will put them in touch. If you have difficulty in obtaining window envelopes for use with score sheets I hold a small stock and offer them to members for £3 per 100 including postage. If you want address cards for window envelopes send a stamped addressed envelope and I will send some to you, but they are easy enough to make yourself.

Once again, thanks for getting your results in on time which eases my burden in preparing the new season, and has a knock on effect in that this season gets started early, giving us all extra time to complete our games. This has been especially helpful this year as I have had a house and job move to accomplish since the last magazine! Having completed this I will be away on holiday from 17-28 September so I trust there will be no problems in getting the season started.

Our active membership has fallen since two players have decided to become non-league members for a while, so this year we will only have 3 Divisions. They will however be fuller than they have been in recent years so we should all get plenty of games to play. In restructuring the divisions it seemed best simply to cancel all relegation as enough spaces have been created in the divisions for everyone who deserves promotion (and maybe one or two who don't!) to be promoted.

Subscriptions of £5.40 are due for the current season unless you are a Life Member. You can become a Life Member for £70.00 and not have to remember subscriptions any more! Please send subs. direct to our Treasurer as sending them via me increases postage costs.

As always, my thanks to Michael Thistlewood for typing up games for the magazine, and to those who send them in. Once again we have run out of games from members, so some of those included in this magazine are from other sources. Any score sheet sent in will be considered for publication unless you say you do not want this, but please consider sending in your games with annotations which are more instructive to other members.

Finally, our membership has been slowly dwindling over recent years and we could do with reversing this trend. If you are able to put a note about the Club into a Diocesan or other denominational local mailing please do so, or if you use Facebook, Twitter, or any similar web site please tweet about us! I put the book review from the last issue onto the Amazon web site in the hope that this may attract some notice, though so far it hasn't. Perhaps the internet is in fact the problem in that anyone with a computer can get what chess they like on web servers without needing to join a club such as ours. But if you can do anything, please do.

**With best wishes for the new season.**

Bruce Carlin (Secretary)

## CCCC RESULTS : 2010 / 2011

<b>DIVISION 1</b>	C	H	L	N	A	Y	W	Points	%
Caldwell	█	½	1	½	½	½	V	3	60
Hulme	½	█	1	½	0	1	V	3	60
Lowe	0	0	█	1	1	1	V	3	60
Northcott	½	½	0	█	1	½	V	2½	50
Alexander	½	1	0	0	█	1	V	2½	50
Yates	½	0	0	½	0	█	V	1	20
Whitmore	V	V	V	V	V	V	█	VOID	
<b>DIVISION 2</b>	S	N	C	F	G	-	-	Points	%
Smith	█	1	1	1	V	-	-	3	100
Nye	0	█	1	0	V	-	-	1	33
Carlin	0	0	█	1	V	-	-	1	33
Foster	0	1	0	█	V	-	-	1	33
Geddes	V	V	V	V	█	-	-	VOID	
-	-	-	-	-	-	█	-	-	-
-	-	-	-	-	-	-	█	-	-
<b>DIVISION 3</b>	P	H	Co	W	Cl	-	-	Points	%
Partridge	█	½	1	0	1	-	-	2½	63
Hall	½	█	0	1	1	-	-	2½	63
Couch	0	1	█	1	0	-	-	2	50
Williamson	1	0	0	█	1	-	-	2	50
Cleaves	0	0	1	0	█	-	-	1	25
-	-	-	-	-	-	█	-	-	-
-	-	-	-	-	-	-	█	-	-
<b>DIVISION 4</b>	L	B	T	P	S	-	-	Points	%
Loxton	█	½	1	1	V	-	-	2½	83
Boddy	½	█	1	½	V	-	-	2	67
Thistlewood	0	0	█	1	V	-	-	1	33
Procter	0	½	0	█	0	-	-	½	17
Shephard	V	V	V	V	█	-	-	VOID	
-	-	-	-	-	-	█	-	-	-
-	-	-	-	-	-	-	█	-	-

**CONGRATULATIONS TO  
JUSTIN CALDWELL, DAVID HULME, AND DAVID LOWE  
CCCC JOINT WINNERS 2010 / 2011**

This year we have a 3 way tie for the Championship, with David Lowe taking his first win alongside seasoned winners Justin Caldwell and David Hulme. Mark Northcott beat Wilf Alexander on tie break, leaving Andrew Yates in last place, apart from Steve Whitmore who withdrew.

In Division 2 Mike Smith finished with 100% score and thus returns to Division 1, but the other 3 players are utterly tied having each beaten and lost to one other, and each won as black! In the end promotion goes to Antony Foster on the basis that the last time we had BFCC Ratings his was highest. Gordon Geddes' games are void as a result of his death.

Division 3 sees Tim Partridge edge Stanley Hall on tie break (he was black in their drawn game), but both win promotion, while Peter Couch takes 3<sup>rd</sup> from Michael Williamson on tie break.

Division 4 saw John Loxton unbeaten, half a point ahead of David Boddy. Michael Thistlewood finished ahead of Nick Procter who was playing in his first season. Brian Shephard withdrew.

With one death and two withdrawals, we will have only 3 Divisions next season. The fairest way to achieve this seems to be to cancel all relegation this season, while still giving promotion to all who have earned it, and then filling up gaps as needed.

# OPPORTUNITIES TO PLAY MORE GAMES!

Don't have enough chess to play with our own internal competition?  
Want to represent CCCC in the wider chess field?

## SCHEMING MIND

We have been fielding a team in the Scheming Mind Standard Chess League over the past year. Our team has comprised David Hulme, Mike Smith, Andrew Yates, Tim Partridge, Bruce Carlin, and David Lowe. We were placed in Division 5A and have acquitted ourselves reasonably well. In our first match we beat Grantham Kings 10-0, but were there any pride it certainly came before a fall as we promptly lost to Sheffield 0-10. Our promotion challenge then got underway with an 8-2 victory over Dreadnoughts E and another 8-2 victory over Harrogate CCC, before our hopes were dashed by losses to Star Trek E 4-6 and Green Mountain Boys, also 4-6. At the time of writing we are safe in the Division but have lost our chance of promotion with one final match against SCCA finely poised at 3-3.

We play a team of 5 players over 7 rounds. In each round each team member plays one member of an opposing team twice, once as black and once as white. Depending on how quickly games are completed rounds can overlap, so you might have 4 games on the go, or exceptionally 6. But the more players we have the more we can rotate our team so that the same players need not always play in consecutive rounds, thus minimising the risk of having too many games to play. Michael Thistlewood has already joined for the coming season and we would love to have more of you involved. Games are played on the Scheming Mind web site and you are offered a welcome game by an experienced member to get used to this before you play competitively. So far this is not costing either the Club or the individual team members anything financially, it just requires a commitment of time. Please consider joining us.

## BFCC

At one time we fielded a Team in the BFCC Club Championship which required 10 players. This championship ended a few years ago and we never managed to raise a team for the BCCTC despite this only requiring 8 players. They now have a new tournament, the British Webserver Team Tournament that requires a Team of only 4 players and we have been asked if we can manage to get a team together? This costs £20 a team (£5 a player) to enter. Again this is a web based tournament, but this time on the ICCF web server. Please see <http://www.bfcc-online.org.uk/> for more details and contact the Secretary if you would like to be part of a Team.

Both of these championships are played on web servers and thus require members to have Internet access. This is clearly the way 'correspondence chess' is now going (and I touched on the question as to what is 'correspondence' in the book review in the last issue) and it does reduce the opportunities for those members who do not have internet access. But while we have looked into the possibility of playing some of our internal competition by webserver, I can assure members that the Clergy **Correspondence** Chess Club will continue to allow games to be played by any legitimate means of *correspondence* as long as members require this!

## **CCCC DIVISIONS 2011/2012**

Titles are omitted in this list to ensure that everyone fits on one line (everyone is at least The Rev'd.).  
If the POST TOWN is in upper case and the postcode is used there is no need to state the County.

### **DIVISION 1**

J. Caldwell (Justin), Ampleforth Abbey, YORK, YO62 4EN. 01439 766892  
D.S.H. Hulme (David), 135 Mill Lane, Dorridge, SOLIHULL. B93 8NY. 01564 773885  
D. Lowe (David), 21 Firebrass Lane, Sutton Heath, WOODBRIDGE. IP12 3TS. 01394 421722  
W. Alexander (Wilf), 16 Hawkshaw Close, Locking Stumps, WARRINGTON. WA3 7NF. 01925 851472  
A. Yates (Andrew), 18 Fore Street, Tregony, TRURO. TR2 5RN. 01872 530507  
M. Smith (Mike), 2 Addington Drive, Finchley, LONDON. N12 0PH. 020 8446 7698  
A.J. Foster (Antony), 32 Savile Drive, HALIFAX. HX1 2EU. 01422 344152

### **DIVISION 2**

D.C. Nye (David), 2 Old Burford Road, BLEDINGTON. OX7 6US. 01608 659140  
W.P.B. Carlin (Bruce), The Rectory, Church Lane, Kippax. LEEDS. LS25 7HF. 0113 286 2710  
T.R. Partridge (Tim), 54 Thorney Leys, WITNEY. OX28 5LS. 01993 864926  
S. Hall (Stanley), 43 Glen Grove, ROYTON. OL2 5SY. 0161 628 6103  
P. Couch (Peter), 10 Crocket Close, Links View, NORTHAMPTON. NN2 7LL. 01604 713863  
M.J. Williamson (Michael), 49 Ennerdale Road, Astley, Tyldesley, MANCHESTER. M29 7AR. 01942 870274

### **DIVISION 3**

R. Cleaves (Richard), Highbury Manse, 17 Carlton Street, CHELTENHAM. GL52 6AG. 01242 522050  
J.S. Loxton (John), 4 Caerleon Drive, ANDOVER. SP10 4DE. 01264 355473.  
D. Boddy (David), The Vicarage, Shotton Colliery, DURHAM. DH6 2JW. 0191 526 1156  
M. Thistlewood (Michael), 44 Blackhall Croft, Blackhall Road, KENDAL. LA9 4UU. 01539 739677  
N.R. Procter (Nick), 23 Regents Way, Euxton, CHORLEY. PR7 6PG. 01257 241927  
B. Shephard (Brian), Keayn Ard, Queen's Road, PORT ST. MARY, I.O.M. IM9 5EP. 01624 833315

### **NON LEAGUE MEMBERS**

E.A. Bailey (Eric), Hill End, Sapiston, BURY ST. EDMUNDS. IP31 1RR. 01359 269638  
L. Battye (Lisa), 1 Moorside Road, Kersal. SALFORD. M7 3PJ. 0161 792 5362  
D. Brown (David), The Vicarage, Snow Hill, Scorton, PRESTON. PR3 1AY. 01524 791229  
H. Costello (Hilary), Mount St. Bernard Abbey, COALVILLE. LE67 5UL. 01530 832298 / 832022.  
T.R. Fisher (Ruggles), 12 The Dell, OAKHAM. LE15 6JG. 01572 757630  
J. Garton (Jeremy), St. John's Vicarage, 51 Crescent Road, CATERHAM. CR3 6LH. 01833 343188  
M. Joy (Matthew), Lindisfarne, Eddyfield Road, Oxspring, SHEFFIELD. S36 8YH. 01226 762276  
C.O. Mason (Charles), 10a Marshalls Road, BRAINTREE. CM7 2LL. 01376 322840  
W.M. Northcott (Mark), 34 Welsby Road, LEYLAND. PR25 1JB. 01772 493932  
B. Stevenson (Brian), The Vicarage, 138 High Street, WEST MALLING. ME19 6NE. 01732 842245  
P.T. Waterfield (Paul), 3 Nursery Lane, Sutton on Trent, NEWARK. NG23 6PY. 01636 821869  
S. Whitmore (Steve), 70 Marlow Road, HIGH WYCOMBE. HP11 1TH. 01494 529586

## THE NEW SEASON : 2011 / 2012

The season runs from October to July. You may start as soon as you receive this but time does not count until 1st October.

The Divisions for the season are on the next page. These normally contain seven players, but some contain fewer to even out numbers. The pairings for the season are on a loose sheet with members' email addresses, and this sheet will only go to members of the Club. If you haven't heard from anyone in your Division within 14 days of the start of the season, contact the Secretary (but note I am away 17-28 Sept.). Results should be in or games sent for adjudication by 31<sup>st</sup> July 2012.

At the end of the season two players are promoted and two relegated from each division, with adjustments to take account of any withdrawals. Algebraic notation must be used unless both players agree to use another. Ties are decided firstly by the results between the tied players; then by progressively eliminating the results against the lowest placed players in the division; then the number of wins, black wins, & black draws.

The time columns on the score card are: 'R' is the date that you *received* your opponent's move; 'S' is the date you *send* your reply; 'T' is the *total time* used to date. This way you and your opponent can immediately see where you stand in relation to the time limit.

New players have full playing rules enclosed, but a reminder of the basics: 20 days are allowed for each 10 moves; time saved is carried forward; same day reply counts as nil days playing time, but *every day* counts, including Sundays and Bank Holidays; each player can have 14 days off during a game after notifying their opponent; additional time off for special needs can be granted by the Secretary on request; if your opponent exceeds the time limit you can claim the game but you must do this as soon as the time control is broken or you lose the right to claim unless a later time control is also broken.

You may communicate your moves by post, telephone, fax, or e-mail. If using phone the following guidelines can help:

- i. Read back your opponent's last move before giving your new one.
- ii. Arrange mutually convenient times to phone during cheap rate, and if out try to ensure that someone can take down a move; or get an answering machine.
- iii. Always have pen and paper by every phone in the house.
- iv. If using algebraic notation the phonetic alphabet can avoid confusion.
- v. Exchange the scorecard by post every 10 moves or so (possibly with a diagram of the position) as a check that no one has gone wrong.

In order to avoid anyone exploiting the technology to make same day replies impossible (e.g. by emailing, faxing or phoning an answering machine at 2359 hours) we follow the convention that a move so transmitted is received the day after it was sent, as if it were a perfect first class letter (I believe there still are such things).

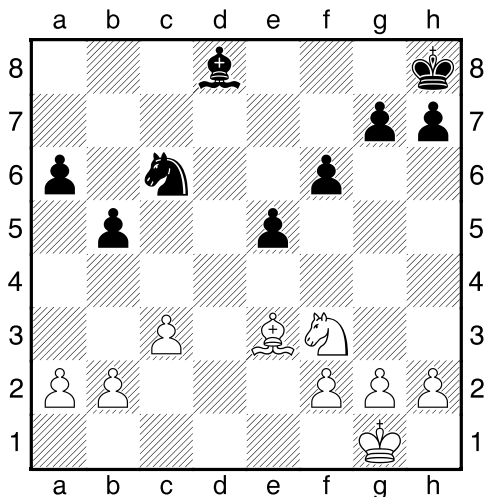
Whilst second class post is allowed it can be dreadfully slow on some routes. If it looks as if your game is not going to finish please consider changing to 1st class post or telephone around Easter. While unfinished games can be submitted for adjudication, we have been forced to introduce a charge for this to have access to the BFCC adjudication panel.

## A magazine medley. From the very great to our own humble chess players!

We have now completely exhausted our stock of games.  
Please will members send in games, annotated if  
possible, or the next issue of CHESS minister! will be  
very thin!

## ANOTHER ENDGAME

Another endgame played otb.  
Michael Thistlewood was Black.

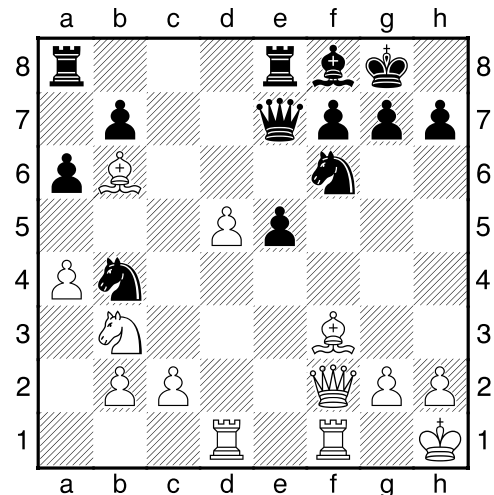


24.♔c5 ♖g8 25.♘d2 ♙e7 26.♙xe7 ♘xe7 27.c4 f5  
28.cxb5 axb5 29.f3 g5 30.♗f2 29 30...h5 23  
31.♗e2 ♘d5 32.g3 ♗f7 33.a3 g4 34.fxg4 hxg4  
35.♗d3 ♗e6 36.♘f1 f4 This was where I seemed to  
go wrong. Fritz suggests King moves only here.  
37.gxf4 exf4 38.♗e4 I felt I was getting into  
zugzwang 38...f3 39.b3 ♘c3+ 40.♗f4 54 40...♘b1  
32 41.a4 bxa4 42.bxa4 ♘c3 43.a5 ♗d6 44.♗xg4  
f2 45.♗f3 ♗c6 46.♗xf2 ♘e4+ 47.♗f3 ♘g5+  
48.♗g4 ♘f7 49.h4 ♗b5 50.h5 57 50...♗xa5 39  
51.♗f5 ♗b6 52.♗g6 ♘e5+ 53.♗f6 ♘g4+ 54.♗g5  
♘e5 55.♘e3 ♗c6 56.♗f6 ♘d7+ 57.♗g7 ♗d6 58.h6  
♗e7 59.h7 ♘f6 60.h8♙ 65 60...♘e8+ 43 61.♗g6  
♘d6 62.♘f5+ ♘xf5 63.♗xf5 ♗d6 64.♙d4+ ♗c6  
65.♗e6 1-0

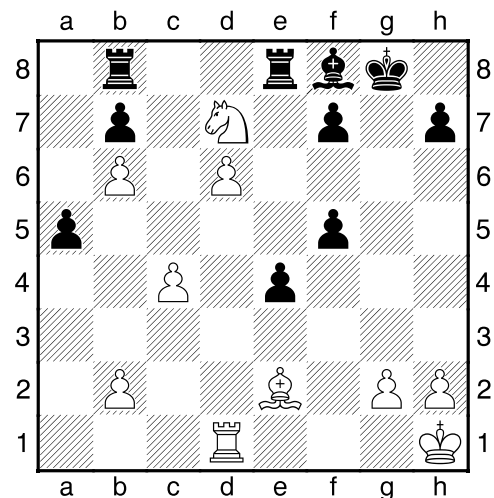
## (6) Carlsen,M (2776) - Grischuk,A (2733) [B84]

XXVI SuperGM Linares ESP (12), 05.03.2009

1.e4 c5 2.♘f3 d6 3.d4 cxd4 4.♘xd4 ♘f6 5.♘c3 a6  
6.♙e2 e6 7.0-0 ♙e7 8.a4 ♘c6 9.♙e3 0-0 10.f4 ♗c7  
11.♗h1 ♖e8 12.♙f3 ♙f8 13.♙d2 ♖b8 14.♙f2 e5  
15.fxg5 dxe5 16.♘b3 ♘b4 17.♙a7 ♖a8 18.♙b6  
♗e7 19.♖ad1 ♙e6 20.♘d5 ♙xd5 21.exd5 Diagram



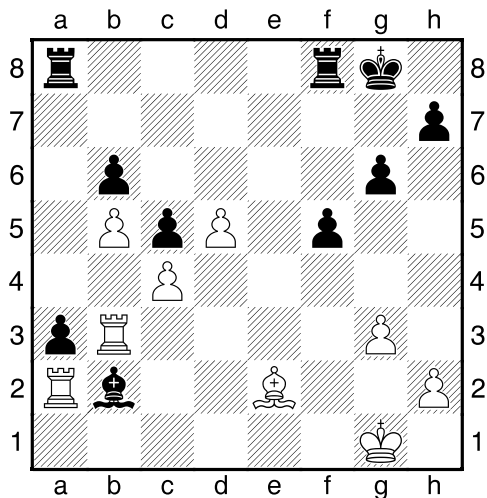
21...e4 22.d6 ♗e6 23.♘c5 ♗f5 24.♙e2 ♗xf2  
25.♖xf2 ♘bd5 26.a5 ♘xb6 27.axb6 ♖ab8 28.♖xf6  
gxf6 29.♘d7 f5 30.c4 a5 Diagram



31.c5 ♙g7 32.♘xb8 ♖xb8 33.♙a6 ♙f6 34.♙xb7  
♖xb7 35.c6 ♖xb6 36.♖c1 ♙xb2 37.d7 1-0



**Just my luck!**  
**Stanley Hall v Richard Cleaves.**  
**CCCC Division 3 2010/2011**



Stanley Hall writes:

This was the position as we came into July. I had been outplayed and planned to sacrifice the exchange on b2, getting rid of the dangerous pawn. I could have battled on as my passed d pawn was some compensation for the exchange. As we were getting near I thought I would have to concede at the year end.

Richard's 31<sup>st</sup> move was f4. I played gxf4 and realized that Richard had set himself a trap. After he took the f pawn with his Rook, I could play Rxb2. The rest was end of year stuff:

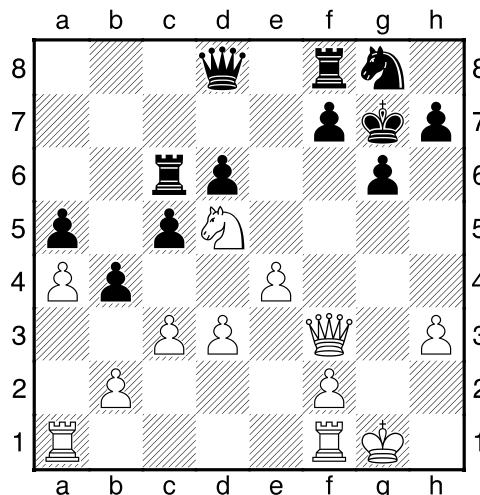
- 33. Rxb2 axb2
- 34. Rxa8+ Rf8 (not the best move)
- 35. Rxf8+ Kxf8
- 36. Bd3 (just in time to stop the pawn)

There was nothing else left to play for. I had won. I didn't set the trap; I just benefited from it. That was pure luck.

**Boddy David – Thistlewood Michael**  
**[B23]**

Clergy Division 4 - 2010–2011

1.e4 c5 2.d3 d6 3.f3 g4 4.g2 c6 5.0-0 g6  
 6.d3 g7 7.h3 xf3 8.gxf3 e5 9.f4 g7 10.a4  
 0-0 11.fxe5 xe5 12.g3 d4 13.f3 xf3+  
 14.fxf3 c8 15.g6 g7 16.g7 xg7 17.c3  
 g8 18.d5 b5 19.a3 a5 20.a4 b4 21.c3 c6  
 Diagram

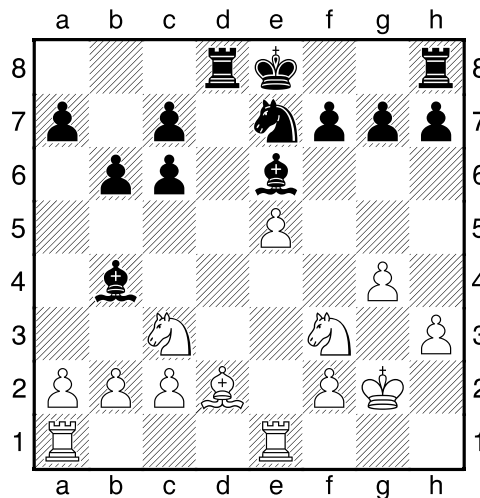


22.h2 f6 23.g3 g8 24.e5 This was the killer move. I should have moved the Rook on c6 24...d5 25.exf6 xf6 26.fxd5 c7+ 27.g1 d6 28.f5 e5 29.f1 bxc3 30.bxc3 e8 31.fxc5 xd3 32.fxd3 fxd3 1-0

**(7) Anand, V (2791) - Ivanchuk, V (2779) [C67]**

XXVI SuperGM Linares ESP (12), 05.03.2009

1.e4 e5 2.f3 c6 3.g5 f6 4.0-0 xe4 5.d4 d6 6.gxc6 dxc6 7.dxe5 f5 8.fxd8+ xd8 9.g3 e8 10.h3 b6 11.e1 b4 12.d2 e6 13.g4 e7 14.g2 d8 Diagram



15.a3 xc3 16.gxc3 c5 17.fad1 xd1 18.fxd1 a5 19.g3 h6 20.f4 g5 21.g2 g6 22.f3 a4 23.f1 d7 24.h4 h5 25.hg5 hxg4 26.fhx8 gxh8 27.f4 g6 28.g3 g7 29.gxg4 f5 30.g3 e4 31.b3 axb3 32.cxb3 f5+ 1/2-1/2