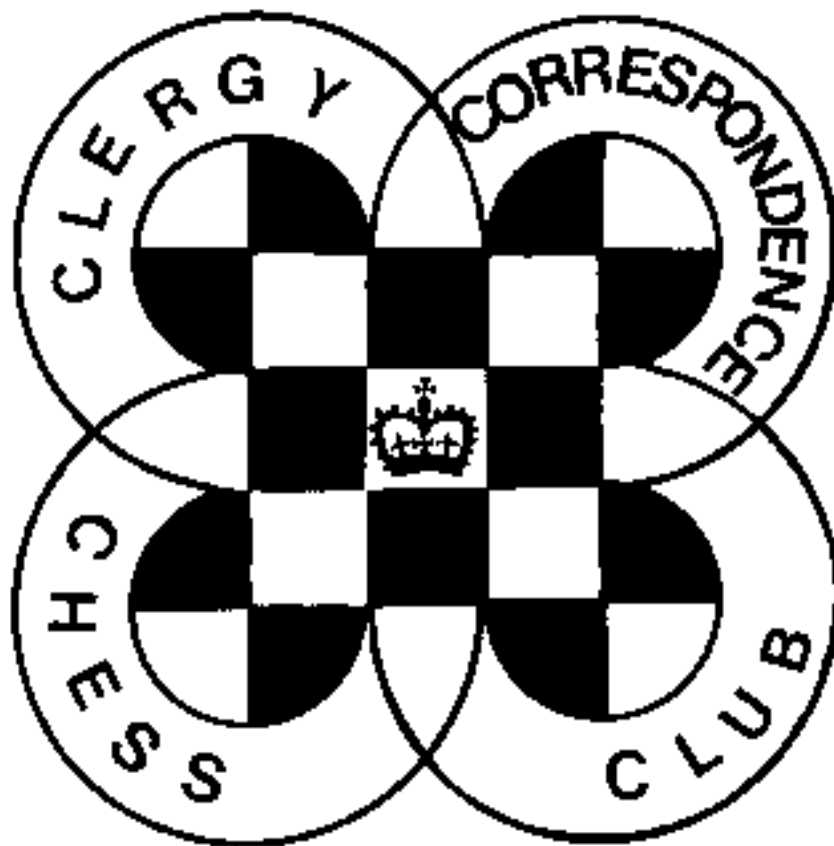


# CHESS minister !

The magazine of the

**CLERGY CORRESPONDENCE CHESS CLUB**

[www.bfcc-online.org.uk/memberorg/cccc](http://www.bfcc-online.org.uk/memberorg/cccc)



**June 2011**

# CLERGY CORRESPONDENCE CHESS CLUB

(Affiliated to the British Federation for Correspondence Chess)

[www.bfcc-online.org.uk/memberorg/cccc](http://www.bfcc-online.org.uk/memberorg/cccc)

- President :** The Revd. Canon Tim Partridge, ☎ 01993 864926  
54 Thorney Leys,  
WITNEY. OX28 5LS. Email: [tim.partridge39@tiscali.co.uk](mailto:tim.partridge39@tiscali.co.uk)
- Treasurer :** The Revd. Charles Mason, ☎ 01376 322840  
10a Marshalls Road,  
BRAINTREE. CM7 2LL. Email: [revdcom@btinternet.com](mailto:revdcom@btinternet.com)
- Secretary:** The Revd. Bruce Carlin ☎ 0161 764 1187  
St. Peter's Vicarage, St. Peter's Road,  
BURY. BL9 9QZ. Email: [brucecarlin@cooptel.net](mailto:brucecarlin@cooptel.net)

## Life Members

W.Alexander	R.Cleaves	M.Joy	B.Stevenson
E.A.Bailey	H.Costello	J.S.Loxton	M.J.Thistlewood
L.Batty	P.Couch	W.M.Northcott	P.T.Waterfield
D.Boddy	T.R.Fisher	D.C.Nye	S.Whitmore
D.Brown	A.J.Foster	T.R.Partridge	M.J.Williamson
J.Caldwell	J.Garton	B.E.Shephard	A.Yates
W.P.B.Carlin	D.S.H.Hulme	M.Smith	

## Subscriptions

Life membership £67.50  
Annual membership £ 5.20

Current Membership Year : October 2010 to September 2011

Under the terms of the Data Protection Act we are exempt from registering providing members are aware of, and do not object to, the use of computers in the keeping of membership records. The Secretary holds members' name, address, phone number, fax and email addresses where provided, their CCCC division, and possible membership of a team, and the Treasurer holds members' subscription records.

## CHESSE Minister!

June 2011

This issue is about a month before the end of the season and is hopefully a timely reminder to those of you who have not yet completed your games to do so. **Please make sure that I receive outstanding results or claims for adjudication by 31st July.** If anyone does need to submit an adjudication and has not got the information how to do it, then please request it from me.

I will email the final results and put them on the web site. If you can't receive email and don't want to wait until the October magazine please send me a stamped address envelope and I will send you a printed copy.

*If you are currently a **LEAGUE MEMBER** and have completed your I will assume you wish to continue in the league next season unless you let me know by 31st July.*

*If you are a **NON-LEAGUE MEMBER** or if you **WITHDREW** this season you **MUST** tell me by 31st July if you want to be included in the league next season. If you have not played for a while tell me which Division you used to be in and if there is space I will enter you where your strength deserves rather than you starting from the bottom.*

Please note the Secretary's new address from 5 July: St. Peter's Vicarage, St. Peter's Road, BURY. BL9 9QZ. Phone 0161 764 1187. I have been appointed vicar of a newly created parish of Bury South East.

Our thanks to those who have sent in games for publication and to Michael Thistlewood for preparing them for the magazine. Please continue sending in your games, with analysis where possible. Any game sent will be considered for publication unless you say not to.

We will almost certainly be down to three Divisions for next season, but these will be nearer to full size, which is what you said you preferred when you were asked. Promotion and relegation will be adjusted accordingly.

**Bruce Carlin (Secretary)**

### **REMOVING >>> FROM EMAILS!**

Ever since I have been playing chess by email I have been irritated by the curse of the > sign. Most of you will be familiar with this problem which appears in front of every line of an email that you reply or forward. If you keep sending a game score, every time you do so another > appears so that after a few moves you have quite a lot of >>>>.

I have now found out how to stop it happening, thanks to Rick Maybury of the Daily Telegraph, who writes a computer 'agony column' on Saturday. This should work in Outlook Express, and there is probably a similar way in other email programs. I have to say I haven't actually had the chance to try it in a chess game, but hopefully it will work.

Select **Tools**, and from the drop down menu select **Options**. From the tabs on the next screen select **Send**. Towards the bottom of this screen you will see **Mail Sending Format**. Under that select **Plain Text Settings**. At the bottom of that screen is the Option to **Indent the Original Text with [>] when replying or forwarding**. Uncheck the tick box and this will grey out and you won't any more be adding the dreaded >>> to all your chess moves!

## *Book Review*

### **Correspondence Chess in Britain and Ireland, 1824-1987 by Tim Harding**

When is Correspondence Chess not Correspondence Chess?

Once computers became involved, would appear to be the answer of this author in drawing his history of CC to a close in 1987, with Britain finally breaking the Soviet hegemony and winning the 9<sup>th</sup> Olympiad. That said, he does include appendixes listing championships right up to 2010.

This book traces the development of correspondence chess from the first formal match between Edinburgh and London begun in 1824, though it acknowledges that the earliest surviving game score dates from 1804, and that there is evidence of chess being played by correspondence as early as the 17<sup>th</sup> Century by Venetian and Croatian merchants. Although the title suggests its scope is limited to our own shores, in fact it also covers the international scene fairly well.

Correspondence chess players have always, it seems, been ready to embrace new technologies as they have become available. Ships at sea played by optical signalling, the electric telegraph was used, as well as phone and radio transmission, long before recent developments of fax and email, though post was always the mainstay and the introduction of the universal penny post in Britain in 1840 really allowed this form of the game to take off. Indeed, until fax and email came along, one can't help marvelling how little things improved – the London to Edinburgh stage coach took 45 hours in 1824, a speed which Royal Mail will rarely better nearly 200 years later!

While the first World War all but brought CC to a standstill, it flourished in the second as a way of continuing to play when face to face chess was difficult, albeit there was little international competition during that period. An interesting aside of social history is that women were late to come to correspondence chess as it was not acceptable for a lady to be seen to be having a correspondence with a strange man. But Clergy, it seems, have been involved in correspondence chess from the earliest days, and one represented the UK in a match against the USA in 1877. Our club gets a brief mention in the book, and appears in the index next to the entry for 'clerical errors'!

The book is thoroughly researched by an author who clearly knows his subject well. Tim Harding is an International Master in CC, has played the game for over 30 years, as well as editing Chess Mail for a while. This is a comprehensive book, and a large one, running to over 400 pages. It contains a lot of games to play through, together with plenty of statistics that are perhaps of less value other than to those involved. For anyone interested in the history of correspondence chess it is a fascinating book. It is also an expensive book, presumably reflecting its limited appeal, but it is essential reading for anyone who really wants to delve into the subject. However, as Secretary of a still extant correspondence chess club I cannot wholly accept his first premise that "this is the story of a bygone age in intellectual sport, which ended in the latter part of the twentieth century." Perhaps playing chess live on the internet is indeed no longer correspondence chess, but merely exchanging the moves by e- rather than snail mail surely still qualifies.

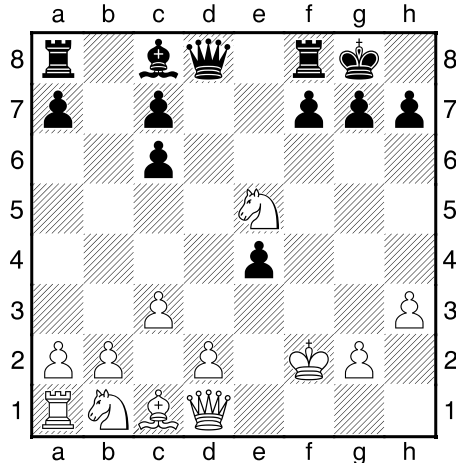
You can buy the book direct from the publishers (see advert with this magazine) for £42.95, currently cheaper than Amazon, though it is always worth checking what other sellers on Amazon marketplace can offer.

**Matt Homer (1555)**  
**David Lowe (1550) [C65]**  
 Dreadnoughts E. v. CCCC

*Another game from the Scheming Mind  
 Standard Chess League.*

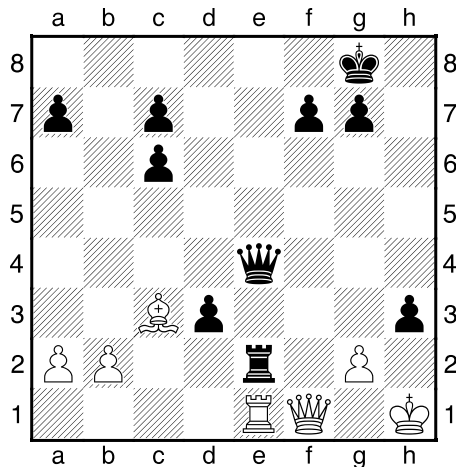
1.e4 e5 2.♘f3 ♘c6 3.♙b5 ♘f6 4.0-0 ♙c5 5.h3 0-0  
 6.♞e1 d6 7.c3 d5 8.♙xc6 bxc6 9.♘xe5 ♙xf2+  
 10.♙xf2 ♘xe4+ 11.♞xe4 dxe4

Diagram



12.♙g1 ♞g5 13.♘g4 ♞h4 14.d4 exd3 15.♘d2  
 ♙xg4 16.hxg4 ♞fe8 17.♘f3 ♞xg4 18.♙d2 ♞e2  
 19.♞f1 ♞d8 20.♘d4 ♞xd4 21.cxd4 ♞xd4+  
 22.♙h1 h5 23.♙c3 ♞e4 24.♞d1 h4 25.♞e1 h3

Diagram



26.♞xe2 dxe2 27.♞f2 g5 28.♙g1 f5 29.gxh3 ♙f7  
 30.♙e1 ♞c2 31.♞e3 ♞xb2 32.♞b3+ ♞xb3  
 33.axb3 ♙e6 34.♙f2 ♙d5 35.♙xe2 ♙c5 36.b4+  
 ♙b5 37.♙d2 f4 38.♙f3 c5 39.bxc5 a5 40.♙xa5

♙xa5 41.h4 gxh4 42.♙xf4 ♙b5 43.c6 ♙xc6  
 44.♙g4 ♙d5 45.♙xh4 ♙d4 46.♙g3 ♙d3 0-1

**Caldwell J. - Yates A. [E15]**  
 Division 1 - 2010-2011

1.d4 ♘f6 2.c4 e6 3.♘f3 b6 4.g3 ♙a6 5.b3 ♙b4+  
 6.♙d2 ♙e7 7.♙g2 c6 8.♙c3 0-0 9.♘bd2 d5 10.0-0  
 ♞e8 11.♞c2 ♘bd7 12.e4 ♘xe4 13.♘xe4 dxe4  
 14.♘e5 ♘xe5 15.dxe5 ♞c8 16.♙xe4 h6 17.f4 b5  
 18.♞fd1 ♞c7 19.♙e1 bxc4 20.bxc4 ♞b6+  
 21.♙g2 ♞c5 22.♞ac1 ♞ed8 23.♙f2 ♞a5 24.♞b1  
 c5 25.♞xd8+ ♞xd8 26.♙e1 ♞c7 27.♞a4 ♞c8  
 28.♙f2 ½-½

**SCHEMING MIND**  
**STANDARD CHESS LEAGUE**

**PROGRESS REPORT**

A great start in this saw us beat Grantham Kings 10-0. This was followed by a serious reversal as we were beaten 0- 10 by Sheffield Chess Association.

We beat Dreadnoughts E Team 8-2 and then beat Harrogate Chess Club also 8-2, before losing 1-6 (3 to play) to Green Mountain Boys.

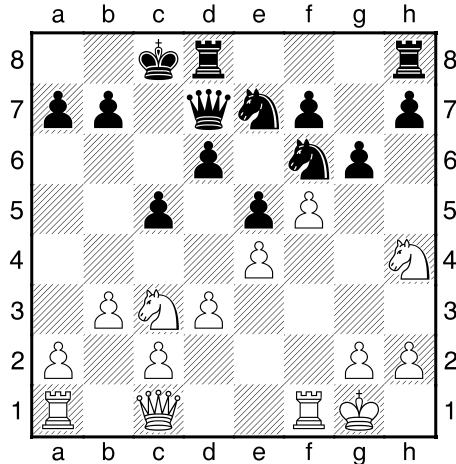
Our last two rounds are finely poised, 3½-3½ against Star Trek E Team and 0-0 against SCCA which has only recently started.

At one point we had a reasonable hope of winning promotion in our first season but this now looks unlikely. Nevertheless our Team has acquitted itself well in our first attempt in this tournament.

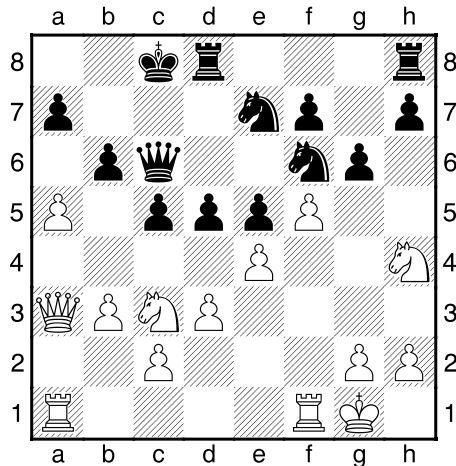
We really could do with a few more people in our Team, This will enable us to rotate players between rounds and spread the load a bit, so that not everyone has to play in every round. If anyone would like to join us for next season please let the Secretary know. This is a web based competition and so you must have internet access.

**Loxton John - MJT [A00]**  
Clergy Division 4 - 2010–2011

1.e4 c5 2.♘f3 d6 3.♙b5+ ♕d7 4.♙xd7+ ♖xd7  
5.0-0 ♗c6 6.b3 e5 7.♗c3 ♗f6 8.♗h4 Nh4 paves  
the way for f4. Ng5 might have been better. JL  
8...♗e7 9.d3 g6 10.f4 ♙h6 Probably too rash. Bg7  
or fritz recommends exf4 11.f5 ♙xc1 12.♖xc1  
0-0-0 Diagram



I wasn't happy about the Knight on h4 and threats on the King side, so I decided to castle the other way. Probably a mistake! MT13.a4 d5 14.♖a3 b6 15.a5 ♖c6 Diagram

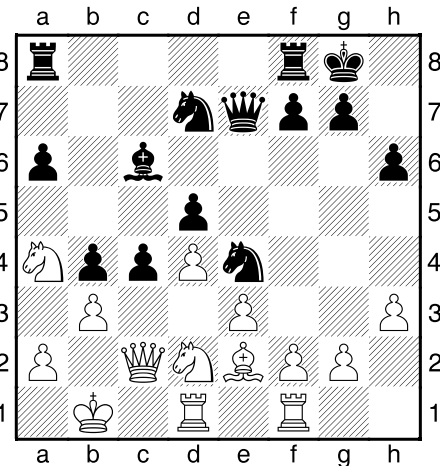


I should have played dxe4 (as suggested by fritz) and thus gone on with my plan to play Qd4+. However after what I did, the whole thing seemed to fall apart at the seams! MT16.axb6 axb6 17.♖a6+ ♖b7 Kd7 would have allowed Ke8 and safety. JL 18.♖xb7+ ♗xb7 19.fxg6 ♗d6 20.♗b5 ♗e6 21.exd5 ♗exd5 22.c4 ♗f4 23.♗a7+ ♗c6 Right into the trap - but it was John's game anyway. MT Kc8 would only have

delayed things as Rfa1, Ra8+ and Rala7 would have been mate. JL 24.♙c7#  
1-0

**Yates A. - Lowe D. [D58]**  
Division 1 - 2010–2011

1.d4 d5 2.c4 e6 3.♗c3 ♗f6 4.♙g5 ♙e7 5.e3 0-0  
6.♗f3 h6 7.♙h4 b6 8.cxd5 exd5 9.♙d3 ♙b7  
10.♖c2 ♗bd7 11.0-0-0 c5 12.♗b1 c4 13.♙e2 a6  
14.h3 b5 15.b3 b4 16.♗a4 ♗e4 17.♙xe7 ♖xe7  
18.♗hf1 ♙c6 19.♗d2 Diagram



19...♙xa4 20.♗xe4 cxb3 21.axb3 ♖fc8 22.♖a2  
♙b5 23.♗g3 ♙xe2 24.♗xe2 ♖e4+ 25.♗a1 a5  
26.♖b1 ♖xg2 27.♗f4 ♖f3 28.♗d2 ♗f6 29.♖c2  
♖c3 30.♗b2 a4 31.bxa4 ♖xa4 32.♙xc3 bxc3+  
33.♗c2 ♗e4 34.♖b3 ♖a5 35.h4 ♖a1 36.♖xd5  
♖xf1  
0-1

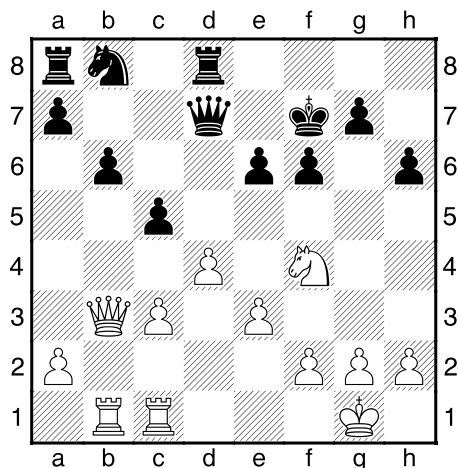
**Hulme D. - Caldwell J. [B33]**  
Division 1 - 2010–2011

1.e4 c5 2.♗f3 ♗c6 3.d4 cxd4 4.♗xd4 ♗f6 5.♗c3  
e5 6.♗db5 d6 7.♙g5 a6 8.♗a3 b5 9.♗d5 ♙e7  
10.♙xf6 ♙xf6 11.c3 ♙g5 12.♗c2 ♖b8 13.♙d3 0-0  
14.0-0 ♙e6 15.♗ce3 ♙xe3 16.♗xe3 ♗e7 17.♖c2  
a5 18.♖ad1 ♖b6 19.b3 ♖fc8 20.♗d2 ♖d8 21.c4  
b4 22.♙e2 ♗c6 23.♗c2 a4 24.♖g5 ♖a8 25.♙g4  
♖c5 26.h3 ♗h8  
½-½

**Foster A. - Carlin B. [D56]**

Division 2 - 2010–2011

1.d4 ♘f6 2.c4 e6 3.♘f3 d5 4.♙g5 ♙e7 5.♘c3 0-0  
6.e3 h6 7.♙h4 ♘e4 8.♙xe7 ♚xe7 9.♙d3 ♘xc3  
10.bxc3 dxc4 11.♙xc4 b6 12.0-0 ♙a6 13.♙xa6  
♘xa6 14.♚a4 ♘b8 15.♘e5 c5 16.♚fc1 ♚d8  
17.♚ab1 f6 18.♘g6 ♚d7 19.♚b3 ♘f7 20.♘f4  
Diagram



20...cxd4 21.cxd4 g5 22.♘xe6

Foster added at the end of the game that this Knight sacrifice was unsound.

22...♚xe6 23.♚xe6+ ♘xe6 24.g4 ♘d7 25.♚c7  
♚dc8 26.♚bc1 ♚xc7 27.♚xc7 a5 28.a4 ♚b8  
29.♘g2 b5 30.axb5 ♚xb5 31.e4 a4 32.♚c6+ ♘e7  
33.♚a6 ♚b4  
0-1

**Alexander W. - Caldwell J. [D01]**

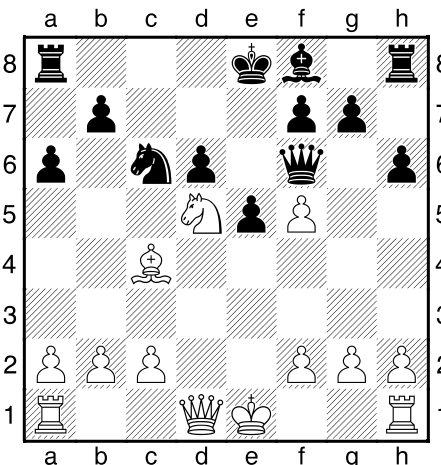
Division 1 - 2010–2011

1.d4 ♘f6 2.♘c3 d5 3.♙g5 ♘bd7 4.♘f3 h6 5.♙h4  
e6 6.♚d3 ♙e7 7.0-0-0 0-0 8.e4 dxe4 9.♘xe4  
♘xe4 10.♚xe4 ♙xh4 11.♚xh4 ♚xh4 12.♘xh4  
♘f6 13.♙e2 ♙d7 14.♘f3 ♙c6 15.♚hg1 ♙e4  
16.♘e5 ♚fd8 17.c3 a5 18.♙d3 ♙xd3 19.♚xd3  
♚ac8 20.♘c2 ♘d5 21.♚f3 ♘f6 22.♘d3 b6 23.♚d1  
c6 24.b3 ♘f8  
1/2-1/2

**Lowe D. - Alexander W. [B94]**

Division 1 -2010–2011

1.e4 c5 2.♘f3 d6 3.d4 cxd4 4.♘xd4 ♘f6 5.♘c3  
a6 6.♙g5 e5 7.♘f5 ♙xf5 8.exf5 ♘c6 9.♙c4 h6  
10.♙xf6 ♚xf6 11.♘d5 Diagram

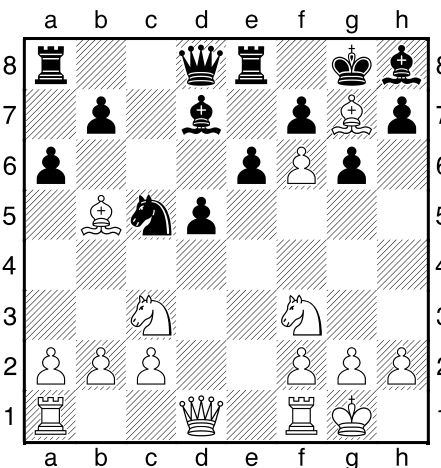


11...♚b8 ?? Qd8 12.♘xf6+ 1-0

**Lowe D. - Northcott M. [C00]**

Division 1 - 2010–2011

1.e4 e6 2.d4 ♘f6 3.♘c3 g6 4.♙g5 d6 5.♘f3 ♙g7  
6.♙c4 ♘bd7 7.0-0 0-0 8.e5 d5 9.exf6 ♙h8  
10.♙d3 c5 11.dxc5 ♘xc5 12.♙h6 ♚e8 13.♙b5  
♙d7 14.♙g7 a6 Diagram



15.♙xd7 ♚xd7 16.♚d4 b6 17.♙xh8 ♘xh8  
18.♚h4 ♚g8 19.♚h6 ♚d8 20.♘g5 1-0

## CCCC RESULTS : 2010 / 2011

<b>DIVISION 1</b>	C	H	W	N	Y	A	L	Points	%
Caldwell	█	½	V	½	½	½	1	3 / 5	60
Hulme	½	█	V	½	1	0	1	3 / 5	60
Whitmore	V	V	█	V	V	V	V	VOID	
Northcott	½	½	V	█	½		0	1½ / 4	38
Yates	½	0	V	½	█	0	0	1 / 5	20
Alexander	½	1	V		1	█	0	2½ / 4	63
Lowe	0	0	V	1	1	1	█	3 / 5	60
<b>DIVISION 2</b>	S	N	C	F	G	-	-	Points	%
Smith	█	1	1	1	V	-	-	3 / 3	100
Nye	0	█	1	0	V	-	-	1 / 3	33
Carlin	0	0	█	1	V	-	-	1 / 3	33
Foster	0	1	0	█	V	-	-	1 / 3	33
Geddes	V	V	V	V	█	-	-	VOID	
-	-	-	-	-	-	█	-	-	-
-	-	-	-	-	-	-	█	-	-
<b>DIVISION 3</b>	Co	P	H	W	Cl	-	-	Points	%
Couch	█	0	1	1	0	-	-	2 / 4	50
Partridge	1	█	½	0		-	-	1½ / 3	50
Hall	0	½	█	1		-	-	1½ / 3	50
Williamson	0	1	0	█	1	-	-	2 / 4	50
Cleaves	1			0	█	-	-	1 / 2	50
-	-	-	-	-	-	█	-	-	-
-	-	-	-	-	-	-	█	-	-
<b>DIVISION 4</b>	L	S	T	B	P	-	-	Points	%
Loxton	█	V	1		1	-	-	2 / 2	100
Shephard	V	█	V	V	V	-	-	VOID	
Thistlewood	0	V	█		1	-	-	1 / 2	50
Boddy		V		█		-	-		
Procter	0	V	0		█	-	-	0 / 2	0
-	-	-	-	-	-	█	-	-	-
-	-	-	-	-	-	-	█	-	-

With one result outstanding we have three players tied on 3 points in Division 1. But the one outstanding game could leave Wilf Alexander, currently on 2½, tied with them (if he draws), winning outright (if he wins), or being relegated (if he loses)!

In Division 2 Mike Smith has finished with 100% score and is certain to be returning to Division 1, but the other 3 players are utterly tied having each beaten and lost to one other, and each won as black. Perhaps the restructuring of the Divisions for next season might solve an otherwise difficult problem of promotion and relegation.

With a couple of results outstanding Division 3 is looking close also with everyone currently on 50%, while Division 4 needs results from David Boddy to be completed.

I will email the final results as soon as they are known, and put them on the website, but if anyone without internet access wants these before the October magazine just send a stamped addressed envelope to receive a printed copy.

It is almost certain that we will be down to 3 Divisions next season, albeit fuller ones, so promotion and relegation might be somewhat flexible.