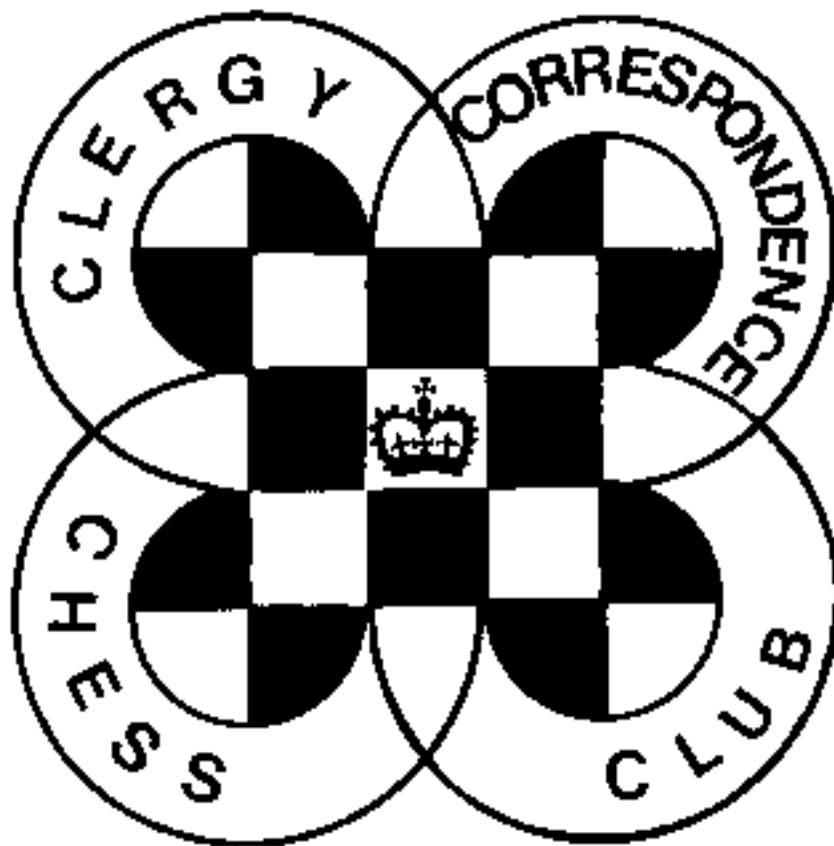


CHESS minister !

The magazine of the

CLERGY CORRESPONDENCE CHESS CLUB

www.bfcc-online.org.uk/memberorg/cccc



February 2011

CLERGY CORRESPONDENCE CHESS CLUB

(Affiliated to the British Federation for Correspondence Chess)

www.bfcc-online.org.uk/memberorg/cccc

- President :** The Revd. Canon Tim Partridge, ☎ 01993 864926
54 Thorney Leys,
WITNEY. OX28 5LS. Email: tim.partridge39@tiscali.co.uk
- Treasurer :** The Revd. Charles Mason, ☎ 01376 322840
10a Marshalls Road,
BRAINTREE. CM7 2LL. Email: revdcom@btinternet.com
- Secretary:** The Revd. Bruce Carlin ☎ 0113 286 2710
The Rectory, Church Lane, Kippax,
LEEDS. LS25 7HF Email: brucecarlin@cooptel.net

Life Members

W.Alexander
E.A.Bailey
L.Batty
D.Boddy
D.Brown
J.Caldwell
W.P.B.Carlin

R.Cleaves
H.Costello
P.Couch
T.R.Fisher
A.J.Foster
J.Garton
D.S.H.Hulme

M.Joy
J.S.Loxton
W.M.Northcott
D.C.Nye
T.R.Partridge
B.E.Shephard
M.Smith

B.Stevenson
M.J.Thistlewood
P.T.Waterfield
S.Whitmore
M.J.Williamson
A.Yates

Subscriptions

Life membership £67.50
Annual membership £ 5.20

Current Membership Year : October 2010 to September 2011

Under the terms of the Data Protection Act we are exempt from registering providing members are aware of, and do not object to, the use of computers in the keeping of membership records. The Secretary holds members' name, address, phone number, fax and email addresses where provided, their CCCC division, and possible membership of a team, and the Treasurer holds members' subscription records.

CHESS Minister!

February 2011

In this magazine you will find results so far received from the current season, along with the Club's accounts, as well as some games.

We are sad to record the death of Gordon Geddes, possibly the last of our founder members, and also Ilona Davies, the widow of our founder, Ivor. Obituaries of both are on the following page.

John Loxton (Division 4) has moved to 4 Caerleon Drive, ANDOVER. SP10 4DE. Tel. 01264 355473.

I would like to encourage one or two more members to sign up for our Team in the Scheming Mind Standard Chess League. We have made a promising start to this with 2 wins from 3 matches so far, but it is proving a bigger commitment than I first thought. However if we had a few more members taking part we could rest people for some of the rounds and spread the load a bit. You must have internet access to take part in this as the games are played on the Scheming Mind web site.

And talking about chess tournaments, my wife & I decided to have a short break in Gibraltar at the end of January in the hope of finding some better weather (in this we failed miserably: it is easy to see why the British colonised the Rock – the weather is just like home!). However we discovered that the Gibraltar Chess Masters was taking place. It only started the day before we were due to come home, but I did manage to see much of the first round. There were some top players there – among them Michael Adams, Vassily Ivanchuk, Nigel Short, even Victor Korchnoi who I saw win his first game at the sprightly age of 80. In the end Ivanchuk won the tournament with 9/10 from Short on 8½.

We send CHESS minister! to the Church Press in the hopes of an occasional mention. However the last issue raised two problems. The email to Life and Work (a URC magazine, I think) was returned as undeliverable, while The Congregationalist contact sent a rather curt email asking me to remove him from our mailing. If anyone can help re-establish contact with either of these periodicals I would be grateful.

Thanks as always to Michael Thistlewood who has typed up the games for publication. Please report results as your games finish, and send in any games that you think are fit for publication, annotated wherever possible.

Bruce Carlin (Secretary)

An extract from the BFCC Information Circular on the ongoing issue of computers.

A BFCC VP of long standing declines to renew on the grounds that he does not use a computer, and is tired of losing to people who do, which is virtually everybody. To remind regular readers and inform new ones, the International Correspondence Chess Federation (ICCF) permits use of computers both for database functions and for finding/deciding moves. It has gone further in its pronouncements, declaring that these uses are not only permitted but not in any way open to question. The BFCC is of course affiliated to the ICCF. That does not mean it has to take the same line on computers, but in fact it at present does. A key issue is whether a ban would be enforceable. If there were a ban but it could not be enforced, that would be handing many wins over to those players prepared to disobey the rules, and many losses to rule-abiders. Though our non-renewing VP can spot the computer users at present, would it be possible if such use were driven underground, and rule-disobeying players avoided obviously "computer-esque" moves?

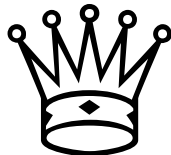
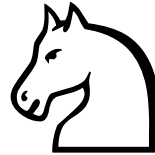
OBITUARY - GORDON GEDDES

Gordon Geddes, who died in January aged 72, was, I believe the last of the Founding Members of the CCCC, who joined the Club when Ivor Davies started it 44 years ago. For many years he served as Treasurer of the Club.

Gordon trained for the ministry at St. Chad's College, Durham and began his ministry in that Diocese before moving to Crewe for a spell as a teacher. Returning to parish ministry alongside health care chaplaincy, he served the rest of his ministry in Chester Diocese, becoming an Honorary Canon of the Cathedral in 2004.

I had been playing Gordon this season and we completed our game at Christmas (he won, as I think he always had whenever we had played each other!). He had explained that his moves might be a little erratic as he was undergoing an experimental treatment for prostate cancer which sometimes left him tired, but this seemed to be going well. Unfortunately he developed an infection early in the New Year, and due to this treatment his immune system could not fight it off and he succumbed.

We offer our prayers and condolences to his widow and family.



OBITUARY - MRS. ILONA DAVIES

We would not normally carry obituaries of members' widows (not least because I would not normally know about them) but I feel that an exception might be made for that of our Founder, Ivor Davies. Ilona died shortly before Christmas following a heart attack at home. Since Ivor's death I had kept in touch with her at least via Christmas cards and I know she was pleased to hear news of the Club her husband had founded and been so involved with, including the Club Archive which she was able to see on our web site.

These two deaths probably sever our last links with the origins of the Club, which is a sadness.

CCCC ACCOUNTS

Income and Expenditure Account for year ended 31.7.10

	<u>2009/10</u>	<u>(2008/09)</u>		<u>2009/10</u>	<u>(2008/09)</u>
<u>Income £</u>			<u>Expenditure £</u>		
Subscriptions	20.00	(43.50)	Secretary's Expenses		
Donations		(10.00)	Magazine	37.00	(58.68)
Bank Interest	2.90	(35.43)	Other postage	2.37	(10.64)
Deficit for year	33.37	(92.38)	Treasurer's Expenses	1.90	(2.49)
			BFCC Affiliation	15.00	(10.00)
			Trophy work		(99.50)
	<u>56.27</u>	<u>(181.31)</u>		<u>56.27</u>	<u>(181.31)</u>

Balance Sheet as at 31.7.10

Balances brought forward	£ 1120.00
Less: deficit for year	33.37
TOTAL NET ASSETS	<u>1086.63</u>
<u>Represented by:</u>	
Alliance & Leicester plc current account	39.68
Alliance & Leicester plc deposit account	2.96
NS&I Investment Account (Life Membership)	1043.99
	<u>1086.63</u>

Treasurer's Report on the 2009/10 Accounts

Again there are no new life subscriptions this year, but we have gained an annual member, bringing the total to five.

A deficit of £33.37 for the year is large in relation to total expenditure of £56.27, but small in absolute terms and in relation to our assets of £1086.63. I repeat what I said last year – that there is no cause for alarm.

Unfortunately my prediction that deposit interest would remain about the same as the previous year proved to be hugely inaccurate: had I been right, we would almost have broken even, but with interest falling from £35.43 to just £2.90, and no new life members, a deficit was inevitable.

On the Expenditure side, our Secretary's expenses have again fallen, reflecting a further take-up of the electronic mailing option. BFCC saw fit to increase our affiliation sub by 50%, but as it was reduced from £13 to £10 in 2007, we can hardly complain!

As regards the Life Membership fund, I had to make a withdrawal of £50 in the year under review, and I expect to make another similar withdrawal in the current year. However, at the end of the financial year the fund stood at £37.29 per Life Member, only 33p less than the previous year (sorry, the figure quoted in last year's report was wrong).

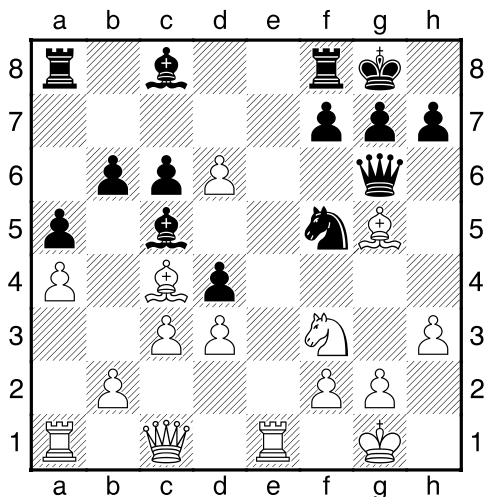
All subscriptions were fully paid up at the end of the financial year, but there are currently arrears of £15.60. Rather a high figure in relation to the number of annual subscribers!

Charles Mason – Hon Treasurer, CCCC

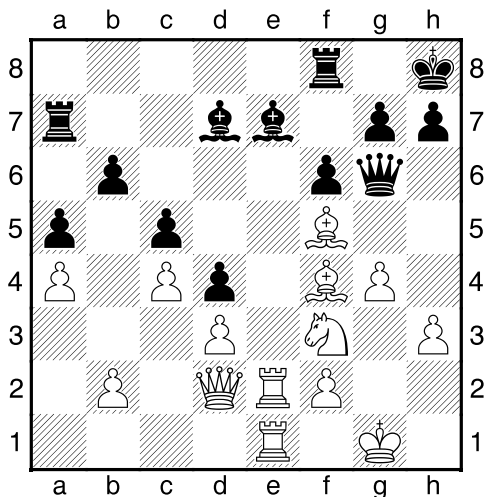
Thistlewood M. – Procter N. [C61]

Division 4 - 2010–2011

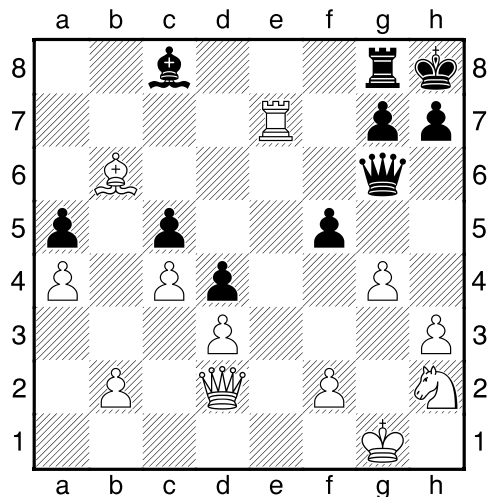
1.e4 e5 2.♘f3 ♘c6 3.♙b5 ♘d4 4.♙c4 ♚f6 This queen proved to be a nuisance all through the game!
 5.♘xd4 exd4 6.d3 ♙c5 7.0-0 b6 8.♘d2 ♘h6
 9.h3 0-0 10.♘f3 c6 11.a4 a6 12.♙g5 ♚g6
 13.♚d2 I was trying to get rid of the Knight but the Queen was in the way! 13...a5 14.e5 ♙b4
 15.♚c1 ♘f5 The Knight has escaped to put more pressure on me! 16.c3 ♙c5 17.♞e1 d5 18.exd6
 Diagram



18...♙xd6 19.♚d2 c5 20.♙d5 ♞a7 21.c4 ♔h8
 22.♞e2 ♙e7 23.♙e4 f6 24.♙f4 ♚h5 25.♞ae1
 ♙d7 26.g4 ♚g6 27.♙xf5 Diagram



At last after a lot of cautious manoeuvring (Fritz has been giving me better moves for most of the game, as he always does when I go through my games!) I see a chance of winning a piece, but there is some very choppy water ahead. 27...♙xf5 28.♘h2 I felt that g4 needed protecting 28...♙c8 29.♞xe7 ♞xe7 30.♞xe7 ♞e8 31.♙d6 ♞d8 32.♙c7 ♞g8 33.♙xb6 I am in among the pawns 33...f5
 Diagram



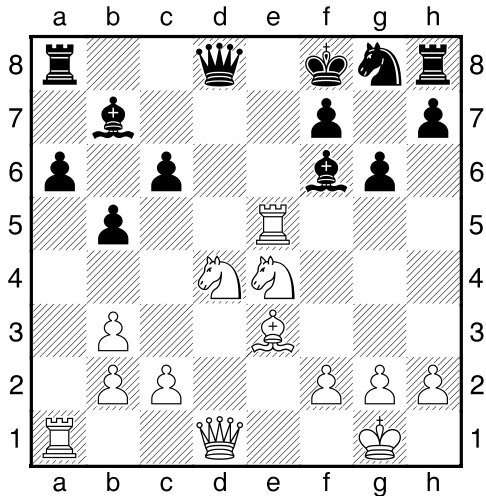
Now the fun begins - there is a threat of fxc4:hxg4 Bxg4:Nxg4 Qxg4+ and probably a draw by perpetual check when I should be winning. 34.♙xc5 Perhaps I should have just played Qe2 34...fxg4 35.♔f1 I decided to move my King away and then play f3 so that the Queen can join in the defence 35...gxh3 36.f3 ♞e8 37.♞xe8+ ♚xe8 38.b3 The Queen is attacking a4 - I had been watching for an attack on the a pawn by the Bishop 38...h6 39.♙xd4 ♚e7 40.♙b2 To stop the Queen getting in the back door via a3 40...♚c5 41.♚c3 To attack g7 with mate - BUT Fritz showed me I missed mate in 2 - Qxh6+ Kg8 Qxg7++ 41...♚g5 42.♚c2 The Queen must come back to the second rank - I nearly returned to d2 which leads to the glorious blunder Qxd2 42...♙f5 This move gave me a nasty turn and I decided to put my Knight on g4 43.♘g4 ♚f4 44.♚c3 I decide to go back to the threat of mate as I can meet Qxf3+ with Nf2 - if Bxd3+ then Qxd3 Qxd3 Nxd3 44...♚xf3+ 45.♘f2 In fact he has Qg2+ which is not terminal but it is awkward 45...h2 46.♚xg7# This was a shame, a case of chess blindness. 1-0

Whitmore S. – Lowe D. [C70]

Division 1 - 2010–2011

1.e4 e5 2.♘f3 ♘c6 3.♙b5 a6 4.♙a4 b5 5.♙b3
 ♘a5 6.0-0 d6 7.d4 exd4 8.♘xd4 ♘xb3 9.axb3
 ♙b7 10.♘c3 g6 11.♞e1 c6 12.e5 dxe5
 13.♞xe5+ ♙e7 14.♘e4 ♖f8 15.♙e3 ♙f6

Diagram



16.♘xf6 ♞xf6 17.♞e2 h6 18.♘f3 ♞e8
 19.♞xe8+ ♖xe8 20.♙d4+ ♞e7 21.♞xe7+ 1-0

SCHEMING MIND STANDARD CHESS LEAGUE

CCCC have entered a Team in the Scheming Mind Standard Chess League. Initially we have been placed in Division 5A. So far our progress has been mixed:

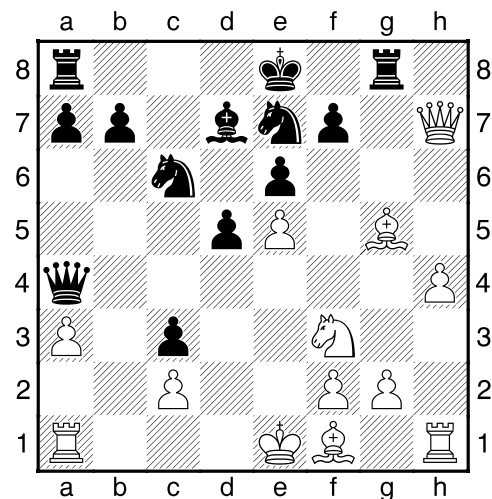
In Round 1 we won 10-0 against Grantham Kings. Round 2 was a complete reversal and we lost 0-10 to Sheffield Chess Association. In Round 3 we recovered to beat Dreadnoughts E 7-2 (1 game is still in progress). We have begun Round 4 against Harrogate Chess Club but there are no results so far, and Round 5 against Star Trek E Team will be starting soon.

Each Round involves 5 players who each play two games, but we can rotate our players between rounds so if we had a few more members we could give each other a rest from time to time.

Currently we have only 6 in our Team (David Hulme, Mike Smith, Andrew Yates, David Lowe, Tim Partridge, and Bruce Carlin) enabling us to 'rest' only one player in each round, but we would be delighted to welcome anyone else who wishes to join the Team for future rounds. Please contact the Secretary. The tournament is played on the Scheming Mind web site, so you must have Internet access. Three games from this follow, the players Scheming Mind Ratings in brackets.

Peter Hulse (2308) Sheffield Mike Smith (1799) CCCC

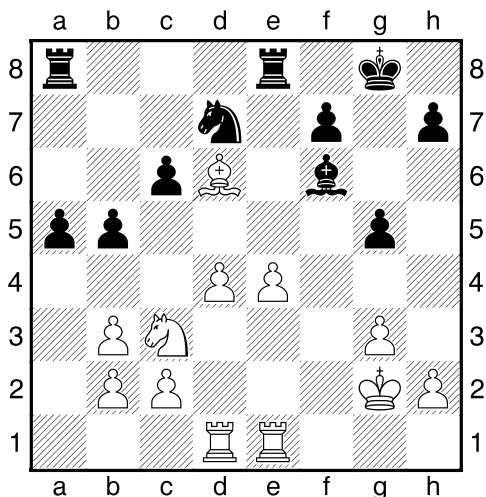
1.e4 e6 2.d4 d5 3.♘c3 ♙b4 4.e5 c5 5.a3
 ♙xc3+ 6.bxc3 ♘c6 7.♞g4 ♘ge7 8.♞xg7 ♞g8
 9.♞xh7 cxd4 10.♘f3 ♞a5 11.♙d2 dxc3
 12.♙g5 ♙d7 13.h4 ♞a4 Diagram



14.♙d3 ♞g4 15.♖f1 0-0-0 16.♞h3 ♞h8 17.♞g7
 ♞dg8 18.♞f6 ♘f5 19.♙xf5 exf5 20.♞xf7 ♞e4
 21.♞d1 ♞xc2 22.♞xd5 f4 23.e6 ♙e8 24.♙xf4
 ♞h5 25.♞d6 ♞g7 26.e7 1-0

**Bryan Wood (2160) Sheffield
David Lowe (1550) CCCC [C35]**

1.e4 e5 2.f4 exf4 3.♖f3 ♙e7 4.♙c4 ♙h4+
5.♔f1 d5 6.♙xd5 ♖f6 7.♙b3 ♙g4 8.d3 0-0
9.♖c3 ♖c6 10.♙xf4 ♖d4 11.♞g1 ♞d7 12.♖e5
♙xd1 13.♖xd7 ♖xd7 14.♞xd1 ♖xb3 15.axb3
c6 16.d4 a5 17.g3 ♙f6 18.♔g2 b5 19.♞ge1 g5
20.♙d6 ♞fe8 Diagram

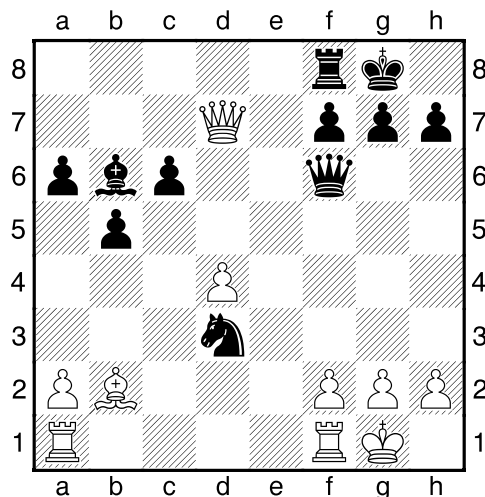


21.e5 ♙g7 22.♖e4 f6 23.exf6 ♙xf6 24.c4 b4
25.♖xf6+ ♖xf6 26.♞xe8+ ♖xe8 27.♙e5 a4
28.bxa4 ♞xa4 29.♞d2 b3 30.c5 ♞c4 31.♔f3
g4+ 32.♔e3 ♞c2 33.♞xc2 bxc2 34.♔d2 ♔f7
35.♔xc2 ♔e6 36.♔d3 ♔d7 37.♔e4 ♔e6 38.b3
h6 39.♔f4 ♖f6 40.♙xf6 ♔xf6 41.♔xg4 ♔e6
42.♔f4 ♔f6 43.g4 ♔e6 44.h4 ♔f6 45.b4 ♔e6
46.g5 1-0

On joining Scheming Mind all players are offered a 'Welcome Game' by an experienced member to give them the chance to get to know the procedure before playing competitively. The following game is one such, between David Lowe (1550), and 'Jim' (1687)

David Lowe (1550) - 'Jim' (1687) [C60]

1.e4 e5 2.♖f3 ♖c6 3.♙b5 ♞f6 4.♖c3 a6 5.♙a4
b5 6.♙b3 ♙c5 7.0-0 ♖ge7 8.♖d5 ♖xd5
9.♙xd5 ♙b7 10.c3 ♞b8 11.b4 ♙b6 12.♙b2
♖e7 13.♙xb7 ♞xb7 14.d4 exd4 15.cxd4 0-0
16.♞e2 d5 17.exd5 ♖xd5 18.♖e5 c6 19.♞g4
♖xb4 20.♖d7 ♞xd7 21.♞xd7 ♖d3 Diagram



22.♞ae1 ♖xe1 23.♞xe1 h6 24.♞e2 ♞d8
25.♞xd8 ♞xd8 26.♞d2 c5 27.d5 c4 28.a3 ♙a5
29.♞d1 c3 30.♙c1 c2 31.♞d3 ♞e8 32.♞e3
♞xe3 33.fxe3 ♙c7 34.♔f2 ♙xh2 35.♔e2 ♙d6
36.♔d3 b4 37.axb4 ♙xb4 38.♔xc2 ♔f8 39.e4
♔e7 40.♙b2 g6 41.g4 a5 42.e5 a4 43.♔d3 a3
44.♙a1 h5 45.gxh5 gxh5 46.♔e2 h4 47.♔f2
♙d2 48.♔f3 ♙c1 49.♙d4 ♙b2 50.♙c5+ ♔d7
51.e6+ fxe6 52.dxe6+ ♔xe6 53.♙xa3 ♙f6
54.♔g4 ♔e5 55.♙b2+ ♔e6 ½-½

CCCC RESULTS : 2010 / 2011

DIVISION 1	C	H	W	N	Y	A	L	Points	%
Caldwell	█	½		½	½	½	1	3 / 5	60
Hulme	½	█					1	1½ / 2	75
Whitmore			█						
Northcott	½			█				½ / 1	50
Yates	½				█			½ / 1	50
Alexander	½					█		½ / 1	50
Lowe	0	0	0				█	0 / 3	0

DIVISION 2	S	N	C	F	G	-	-	Points	%
Smith	█		1		V	-	-	1 / 1	100
Nye		█			V	-	-		
Carlin	0		█		V	-	-	0 / 1	0
Foster				█	V	-	-		
Geddes	V	V	V	V	█	-	-	VOID	
-	-	-	-	-	-	█	-	-	-
-	-	-	-	-	-	-	█	-	-

DIVISION 3	Co	P	H	W	Cl	-	-	Points	%
Couch	█				0	-	-	0 / 1	0
Partridge		█				-	-		
Hall			█			-	-		
Williamson				█		-	-		
Cleaves	1				█	-	-	1 / 1	100
-	-	-	-	-	-	█	-	-	-
-	-	-	-	-	-	-	█	-	-

DIVISION 4	L	S	T	B	P	-	-	Points	%
Loxton	█		1		1	-	-	2 / 2	100
Shephard		█				-	-		
Thistlewood	0		█		1	-	-	1 / 2	50
Boddy				█		-	-		
Procter	0		0		█	-	-	0 / 2	0
-	-	-	-	-	-	█	-	-	-
-	-	-	-	-	-	-	█	-	-

A few early results are in, and Division 1 is looking closer than it has for some years with Justin Caldwell in danger of letting his crown slip. Although still unbeaten he has scored just 1 win and 4 draws from his 5 completed games, leaving the door wide open for a possible new champion this year.

There is very little from the other Divisions, but it is still early in the season.

For the record, although his games were incomplete at the time of his death and so are counted VOID, Gordon Geddes had in fact beaten Bruce Carlin, while losing to Antony Foster.

I will aim to send out updates on the results by email around once a month for the rest of the season as well as putting them on our web site.