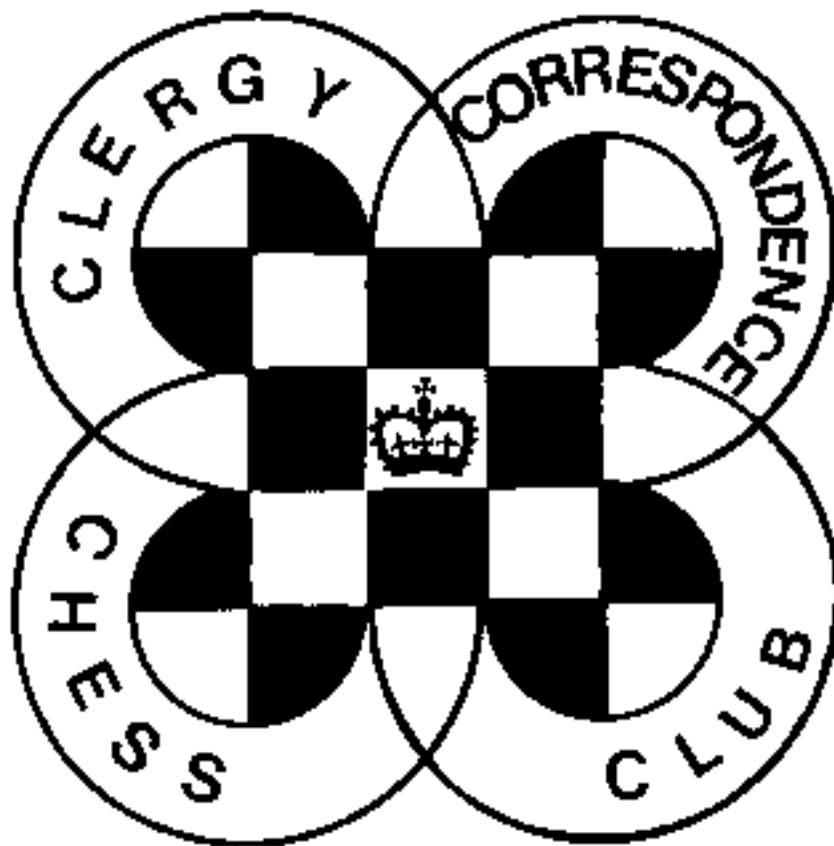


CHESS minister !

The magazine of the

CLERGY CORRESPONDENCE CHESS CLUB

www.bfcc-online.org.uk/memberorg/cccc



October 2010

CLERGY CORRESPONDENCE CHESS CLUB

(Affiliated to the British Federation for Correspondence Chess)

www.bfcc-online.org.uk/memberorg/cccc

- President :** The Revd. Canon Tim Partridge, ☎ 01993 864926
54 Thorney Leys,
WITNEY. OX28 5LS. Email: tim.partridge39@tiscali.co.uk
- Treasurer :** The Revd. Charles Mason, ☎ 01376 322840
10a Marshalls Road,
BRAINTREE. CM7 2LL. Email: revdcom@btinternet.com
- Secretary:** The Revd. Bruce Carlin ☎ 0113 286 2710
The Rectory, Church Lane, Kippax,
LEEDS. LS25 7HF Email: brucecarlin@cooptel.net

Life Members

W.Alexander
E.A.Bailey
L.Batty
D.Boddy
D.Brown
J.Caldwell
W.P.B.Carlin

R.Cleaves
H.Costello
P.Couch
T.R.Fisher
A.J.Foster
J.Garton
G.D.Geddes

D.S.H.Hulme
M.Joy
J.S.Loxton
W.M.Northcott
D.C.Nye
T.R.Partridge
B.E.Shephard

M.Smith
B.Stevenson
M.J.Thistlewood
P.T.Waterfield
S.Whitmore
M.J.Williamson
A.Yates

Subscriptions

Life membership £67.50
Annual membership £ 5.20

Current Membership Year : October 2010 to September 2011

Under the terms of the Data Protection Act we are exempt from registering providing members are aware of, and do not object to, the use of computers in the keeping of membership records. The Secretary holds members' name, address, phone number, fax and email addresses where provided, their CCCC division, and possible membership of a team, and the Treasurer holds members' subscription records.

This magazine begins the 2010 / 2011 season. Play officially begins on 1st October but you can start straight away without it costing you any time until then. Sufficient score sheets are enclosed for you to have one for each game irrespective of whether you are white or black. To see who you are playing see the pairings on the loose sheet. Non-league members can make direct contact with another such member or write to me and say they would like a game. Once I have heard from two such players I will put them in touch. If you have difficulty in obtaining window envelopes for use with score sheets I hold a small stock and offer them to members for £3 per 100 including postage. If you want address cards for window envelopes send a stamped addressed envelope and I will send some to you.

A warm welcome to Nick Procter, who joins the Club for this season. This means we again have 4 Divisions, albeit of reduced size. I have had to be somewhat creative with promotions and relegations because of the reduced size of Divisions, but as our rules state I have made extra promotions rather than reducing relegations in order to freshen up the Divisions.

Once again, thanks for getting your results in on time which eases my burden in preparing the new season, and has a knock on effect in that this season gets started early, giving us extra time to complete our games. You can start your games as soon as you receive this magazine, but time does not count until 1st October.

Subscriptions of £5.20 are due for the current season unless of course you are a Life Member. You can become a Life Member for £67.50 and not have to remember subscriptions any more! Please send subs. direct to our Treasurer as sending them via me increases postage costs.

As I write this a Team from CCCC is about to start playing in the Scheming Mind Chess League. This is a web based tournament so it is only open to members with Internet access. While we do have just enough players to get started we would be happy to have more as we can rotate players in subsequent rounds to ease the load. Each round involves playing just two games against one opponent, so it is not unduly onerous, but rounds may overlap if players are slow so it would help if we had more people involved. Please let me know if you would like to join this Team and I will send you details of how to join Scheming Mind.

As always, my thanks to Michael Thistlewood for typing up games for the magazine, and to those who send them in. At present we have no games at all from members, hence those included in this magazine are from other sources. Any score sheet sent in will be considered for publication unless you say you do not want this, but please consider sending in your games with annotations which are more instructive.

I hope there won't be any problems getting the new season started, but please note that I am away 4th to 20th September.

With best wishes for the new season.

Bruce Carlin (Secretary)

CCCC RESULTS : 2009 / 2010

DIVISION 1	C	Hu	W	N	S	G	Ha	Points	%
Caldwell	█	1/2	1	1	1	1	V	4 1/2 / 5	90
Hulme	1/2	█	1/2	1/2	1	1	V	3 1/2 / 5	70
Whitmore	0	1/2	█	1/2	1	1	V	3 / 5	60
Northcott	0	1/2	1/2	█	1	0	V	2 / 5	40
Smith	0	0	0	0	█	1	V	1 / 5	20
Geddes	0	0	0	0	1	█	V	1 / 5	20
Harper	V	V	V	V	V	V	█	void	
DIVISION 2	Y	A	L	C	P	-	-	Points	%
Yates	█	1	1	1/2	1	-	-	3 1/2 / 4	88
Alexander	0	█	1	1	1	-	-	3 / 4	75
Lowe	0	0	█	1	1	-	-	2 / 4	50
Couch	1/2	0	0	█	1	-	-	1 1/2 / 4	38
Partridge	0	0	0	0	█	-	-	0 / 4	0
-	-	-	-	-	-	█	-	-	-
-	-	-	-	-	-	-	█	-	-
DIVISION 3	N	C	F	L	S	-	-	Points	%
Nye	█	1/2	1	1	V	-	-	2 1/2 / 3	83
Carlin	1/2	█	1/2	1	V	-	-	2 / 3	67
Foster	0	1/2	█	1/2	V	-	-	1 / 3	33
Loxton	0	0	1/2	█	V	-	-	1/2 / 3	17
Shephard	V	V	V	V	█	-	-	void	
-	-	-	-	-	-	█	-	-	-
-	-	-	-	-	-	-	█	-	-
DIVISION 4	H	W	C	T	B	-	-	Points	%
Hall	█	1	1/2	1/2	V	-	-	2 / 3	67
Williamson	0	█	1	1	V	-	-	2 / 3	67
Cleaves	1/2	0	█	1/2	V	-	-	1 / 3	33
Thistlewood	1/2	0	1/2	█	V	-	-	1 / 3	33
Boddy	V	V	V	V	█	-	-	void	
-	-	-	-	-	-	█	-	-	-
-	-	-	-	-	-	-	█	-	-

**CONGRATULATIONS TO
JUSTIN CALDWELL
CCCC CHAMPION 2009/10**

Justin Caldwell is this year's outright winner. David Hulme is runner up ahead of Steve Whitmore and Mark Northcott. Mike Smith beats Gordon Geddes on tie break (the game between them) but they both go down anyway.

Division 2 sees Andrew Yates victorious by half a point from Wilf Alexander, both of whom go up. David Lowe also gains promotion as there is a spare place in Division 1, while Peter Couch and Tim Partridge are relegated.

David Nye wins Division 3 from Bruce Carlin, who is also promoted along with Antony Foster (again to fill the spare place). John Loxton will be relegated with Brian Shephard who defaulted.

Division 4 sees Stanley Hall victorious, winning on tie break (the games between the players) from Michael Williamson, but both are promoted. Richard Cleaves beats Michael Thistlewood on the 5th tie break criterion (most black draws), with David Boddy's games declared void.

Extra promotions have been given as a result of the spare place Geoffrey Harper's death has created. We decided we would do this rather than reduce relegations in order to freshen up the Divisions. There will still be a Division 4 in 2010/11 as we have a new member.

THE NEW SEASON : 2010 / 2011

The season runs from October to July. You may start as soon as you receive this but time does not count until 1st October. Results should be in or games sent for adjudication by 31st July 2011. If you receive the score card with this magazine then you are responsible for starting the game, otherwise you should expect to hear from your opponent in a few days. If you haven't heard from anyone in your Division within 14 days of the start of the season, contact the Secretary (but note I am away 4-20 Sept.).

The Divisions for the season are on the next page. These normally contain seven players, but some contain fewer to even out numbers. The pairings for the season are on a loose sheet with members' email addresses, and this sheet will only go to members of the Club.

At the end of the season two players are promoted and two relegated from each division, with adjustments to take account of any withdrawals. Algebraic notation must be used unless both players agree to use another. Ties are decided firstly by the results between the tied players; then by progressively eliminating the results against the lowest placed players in the division; then the number of wins, black wins, & black draws.

The time columns on the score card are: 'R' is the date that you *received* your opponent's move; 'S' is the date you *send* your reply; 'T' is the *total time* used to date. This way you and your opponent can immediately see where you stand in relation to the time limit.

New players have full playing rules enclosed, but a reminder of the basics: 20 days are allowed for each 10 moves; time saved is carried forward; same day reply counts as nil days playing time, but *every day* counts, including Sundays and Bank Holidays; each player can have 14 days off during a game after notifying their opponent; additional time off for special needs can be granted by the Secretary on request; if your opponent exceeds the time limit you can claim the game but you must do this as soon as the time control is broken or you lose the right to claim unless a later time control is also broken.

You may communicate your moves by post, telephone, fax, or e-mail. If using phone the following guidelines can help:

- i. Read back your opponent's last move before giving your new one.
- ii. Arrange mutually convenient times to phone during cheap rate, and if out try to ensure that someone can take down a move; or get an answering machine.
- iii. Always have pen and paper by every phone in the house.
- iv. If using algebraic notation the phonetic alphabet can avoid confusion.
- v. Exchange the scorecard by post every 10 moves or so (possibly with a diagram of the position) as a check that no one has gone wrong.

In order to avoid anyone exploiting the technology to make same day replies impossible (e.g. by emailing, faxing or phoning an answering machine at 2359 hours) you should adopt the convention that a move so transmitted is received the day after it was sent, as if it were a perfect first class letter.

Whilst second class post is allowed it can be dreadfully slow on some routes. If it looks as if your game is not going to finish please consider changing to 1st class post or telephone around Easter. While unfinished games can be submitted for adjudication, we have been forced to introduce a charge for this to have access to the BFCC adjudication panel.

CCCC DIVISIONS 2010/2011

Titles are omitted in this list to ensure that everyone fits on one line (everyone is at least The Rev'd.).
If the POST TOWN is in upper case and the postcode is used there is no need to state the County.

DIVISION 1

J. Caldwell (Justin), Ampleforth Abbey, YORK, YO62 4EN. 01439 766892
D.S.H. Hulme (David), 135 Mill Lane, Dorridge, SOLIHULL. B93 8NY. 01564 773885
S. Whitmore (Steve), 70 Marlow Road, HIGH WYCOMBE. HP11 1TH. 01494 529586
W.M. Northcott (Mark), 34 Welsby Road, LEYLAND. PR5 1JB. 01772 493932
A. Yates (Andrew), 18 Fore Street, Tregony, TRURO. TR2 5RN. 01872 530507
W. Alexander (Wilf), 16 Hawkshaw Close, Locking Stumps, WARRINGTON. WA3 7NF. 01925 851472
D. Lowe (David), 21 Firebrass Lane, Sutton Heath, WOODBRIDGE. IP12 3TS. 01394 421722

DIVISION 2

M. Smith (Mike), 2 Addington Drive, Finchley, LONDON. N12 0PH. 020 8446 7698
G.D. Geddes (Gordon), 6 Richmond Close, SANDBACH. CW11 3TX
D.C. Nye (David), 2 Old Burford Road, BLEDINGTON. OX7 6US. 01608 659140
W.P.B. Carlin (Bruce), The Rectory, Church Lane, Kippax. LEEDS. LS25 7HF. 0113 286 2710
A.J. Foster (Antony), 32 Savile Drive, HALIFAX. HX1 2EU. 01422 344152

DIVISION 3

P. Couch (Peter), 10 Crocket Close, Links View, NORTHAMPTON. NN2 7LL. 01604 713863
T.R. Partridge (Tim), 54 Thorney Leys, WITNEY. OX28 5LS. 01993 864926
S. Hall (Stanley), 43 Glen Grove, ROYTON. OL2 5SY. 0161 628 6103
M.J. Williamson (Michael), 49 Ennerdale Road, Astley, Tyldesley, MANCHESTER. M29 7AR. 01942 870274
R. Cleaves (Richard), Highbury Manse, 17 Carlton Street, CHELTENHAM. GL52 6AG. 01242 522050

DIVISION 4

J.S. Loxton (John), 3 Ashurst Drive, Worth, CRAWLEY. RH10 7FS. 01293 887762
B. Shephard (Brian), Keayn Ard, Queen's Road, PORT ST. MARY, I.O.M. IM9 5EP. 01624 833315
M. Thistlewood (Michael), 44 Blackhall Croft, Blackhall Road, KENDAL. LA9 4UU
D. Boddy (David), The Vicarage, Shotton Colliery, DURHAM. DH6 2JW. 0191 526 1156
N.R. Procter (Nick), 23 Regents Way, Euxton, CHORLEY. PR7 6PG. 01257 241927

NON LEAGUE MEMBERS

E.A. Bailey (Eric), Hill End, Sapiston, BURY ST. EDMUNDS. IP31 1RR. 01359 269638
L. Batty (Lisa), 1 Moorside Road, Kersal. SALFORD. M7 3PJ. 0161 792 5362
D. Brown (David), The Vicarage, Snow Hill, Scorton, PRESTON. PR3 1AY. 01524 791229
H. Costello (Hilary), Mount St. Bernard Abbey, COALVILLE. LE67 5UL. 01530 832298 / 832022.
T.R. Fisher (Ruggles), 12 The Dell, OAKHAM. LE15 6JG. 01572 757630
J. Garton (Jeremy), St. John's Vicarage, 51 Crescent Road, CATERHAM. CR3 6LH. 01833 343188
G. Johnson (Graham), 16 Oaklands Park, MARKET HARBOROUGH. LE16 8EU. 01858 434118
M. Joy (Matthew), Lindisfarne, Eddyfield Road, Oxspring, SHEFFIELD. S36 8YH. 01226 762276
C.O. Mason (Charles), 10a Marshalls Road, BRAINTREE. CM7 2LL. 01376 322840
B. Stevenson (Brian), The Vicarage, 138 High Street, WEST MALLING. ME19 6NE. 01732 842245
P.T. Waterfield (Paul), 3 Nursery Lane, Sutton on Trent, NEWARK. NG23 6PY. 01636 821869

As we have no games from the Club at present here are three games from players at a far higher level than most of us will ever achieve!

Former and Present

Two important events have happened this year in connection with the World Chess Championship.

In March, a former world champion died – Vasily Smyslov. He won the title in 1957 and kept it for a year. But he continued to play with great success at the highest level up to his early sixties and he was still playing well for a good time after that. He also had a very fine singing voice and once auditioned for the Bolshoi Opera.

And in May this year Viswanathan Anand became world champion at the age of 40.

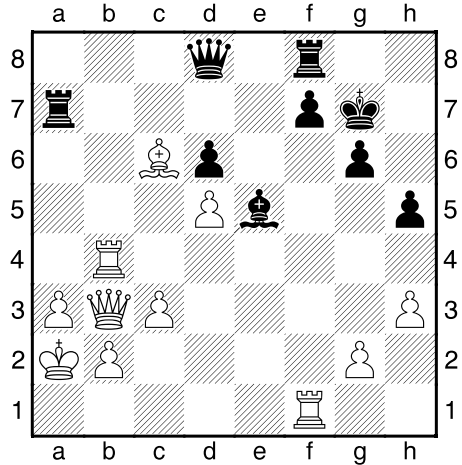
It struck me that there was a great similarity of character in these two great men.

‘ ... good natured, cheerful, with a placid disposition, .. rarely disparaging others.’ These words were written about Smyslov, but they could equally have been written about Anand.

Here is one of the games that helped Smyslov on his way to the title:

Smyslov,V – Botvinnik,M [B66]

World Championship 21st Moscow (8), 23.03.1957
1.e4 c5 2.♘f3 ♘c6 3.d4 cxd4 4.♘xd4 ♘f6 5.♘c3 d6 6.♗g5 e6 7.♞d2 a6 8.0-0-0 h6 9.♗e3 ♗d7 10.f4 ♞c8 11.♙b1 b5 12.♗d3 ♘g4 13.♗g1 ♘xd4 14.♗xd4 e5 15.♗g1 exf4 16.♘d5 ♘e3 17.♗xe3 fxe3 18.♞xe3 ♗e6 19.♞a7 ♗xd5 20.exd5 ♗e7 21.♞he1 ♞c7 22.♞xa6 0-0 23.c3 ♗f6 24.♗xb5 ♞a8 25.♞c6 ♞b8 26.♞c4 ♞c8 27.♗c6 ♞a7 28.♞b3 ♞c7 29.♞e4 g6 30.♞f1 ♗e5 31.h3 ♙g7 32.♞b4 ♞f8 33.a3 h5 34.♙a2 ♞d8 Diagram

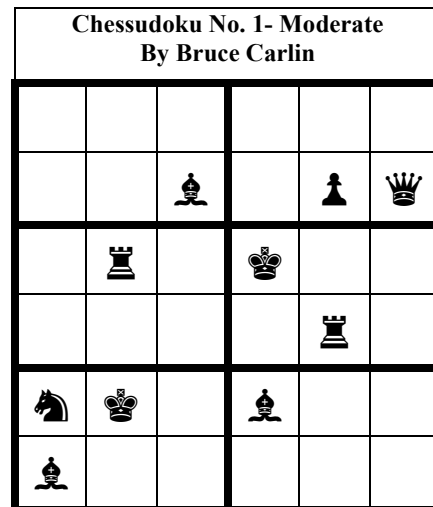


35.♞c2 f5 36.♞f2 ♞af7 37.a4 g5 38.♞b5 g4 39.a5 f4 40.hxg4 hxg4 41.a6 1-0

Do any of you do Sudoku? Or are any of you ‘afraid’ of it because you think it is a number puzzle? If so try *Chessudoku*, a little idea I had one day!

It uses a mini-sudoku grid (as there are only 6 distinct chess pieces). The rules are simple. Each Row and Column and each 3x2 sub-section must contain each chess piece (as shown at the side of the grid) once only (you can of course write the initial letters of the pieces rather than drawing them).

Solution on the next page.

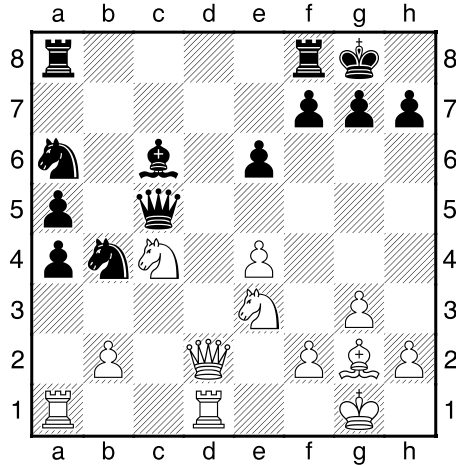
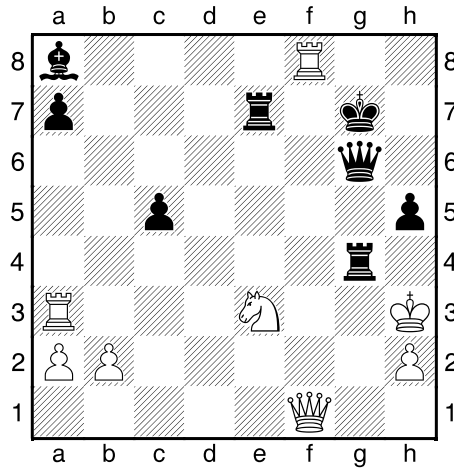


Here is Anand's game 4:

Viswanathan Anand – Veselin Topalov

World Championship 4, 28.04.2010

1.d4 ♘f6 2.c4 e6 3.♘f3 d5 4.g3 dxc4 5.♙g2 ♙b4+ 6.♙d2 a5 7.♚c2 ♙xd2+ 8.♚xd2 c6 9.a4 b5 10.♘a3 ♙d7 11.♘e5 ♘d5 12.e4 ♘b4 13.0-0 0-0 14.♚fd1 ♙e8 15.d5 ♚d6 16.♘g4 ♚c5 17.♘e3 ♘8a6 18.dxc6 bxa4 19.♘axc4 ♙xc6 Diagram



20.♚ac1 h6 21.♘d6 ♚a7 22.♘g4 ♚ad8 23.♘xh6+ gxh6 24.♚xh6 f6 25.e5 ♙xg2 26.exf6 ♚xd6 27.♚xd6 ♙e4 28.♚xe6 ♘d3 29.♚c2 ♚h7 30.f7+ ♚xf7 31.♚xe4 ♚f5 32.♚e7 1-0

41.♘f5+ ♔h7 42.♚g3 ♚xg3+ 43.hxg3 ♚g4+ 44.♔h2 ♚e2+ 45.♔g1 ♚g2+ 46.♚xg2 ♙xg2 47.♔xg2 ♚e2+ 48.♔h3 c4 49.a4 a5 50.♚f6 ♔g8 51.♘h6+ ♔g7 52.♚b6 ♚e4 53.♔h2 ♔h7 54.♚d6 ♚e5 55.♘f7 ♚xb2+ 56.♔h3 ♚g7 0-1

Here is the Chessudoku solution. Let me know if it something you would like to see in future magazines.

Veselin Topalov – Vishwanathan Anand [D56]

World Championship - 12, 11.05.2010

1.d4 d5 2.c4 e6 3.♘f3 ♘f6 4.♘c3 ♙e7 5.♙g5 h6 6.♙h4 0-0 7.e3 ♘e4 8.♙xe7 ♚xe7 9.♚c1 c6 10.♙e2 ♘xc3 11.♚xc3 dxc4 12.♙xc4 ♘d7 13.0-0 b6 14.♙d3 c5 15.♙e4 ♚b8 16.♚c2 ♘f6 17.dxc5 ♘xe4 18.♚xe4 bxc5 19.♚c2 ♙b7 20.♘d2 ♚fd8 21.f3 ♙a6 22.♚f2 ♚d7 23.g3 ♚bd8 24.♔g2 ♙d3 25.♚c1 ♙a6 26.♚a3 ♙b7 27.♘b3 ♚c7 28.♘a5 ♙a8 29.♘c4 e5 30.e4 f5 31.exf5 e4 32.fxe4 ♚xe4+ 33.♔h3 ♚d4 34.♘e3 ♚e8 35.g4 h5 36.♔h4 g5+ 37.fxg6 ♚xg6 38.♚f1 ♚xg4+ 39.♔h3 ♚e7 40.♚f8+ ♔g7 Diagram

