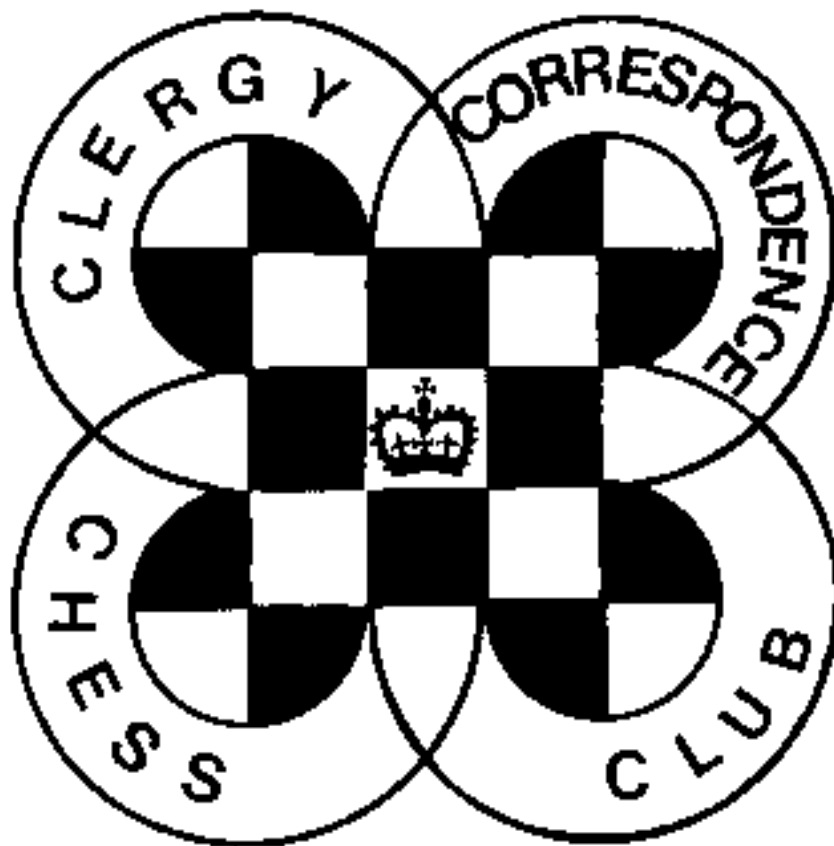


# CHESS minister !

The magazine of the

**CLERGY CORRESPONDENCE CHESS CLUB**

[www.bfcc-online.org.uk/memberorg/cccc](http://www.bfcc-online.org.uk/memberorg/cccc)



**June 2010**

# CLERGY CORRESPONDENCE CHESS CLUB

(Affiliated to the British Federation for Correspondence Chess)

[www.bfcc-online.org.uk/memberorg/cccc](http://www.bfcc-online.org.uk/memberorg/cccc)

- President :** The Revd. Canon Tim Partridge, ☎ 01993 864926  
54 Thorney Leys,  
WITNEY. OX28 5LS. Email: [tim.partridge39@tiscali.co.uk](mailto:tim.partridge39@tiscali.co.uk)
- Treasurer :** The Revd. Charles Mason, ☎ 01376 322840  
10a Marshalls Road,  
BRAINTREE. CM7 2LL. Email: [revdcom@btinternet.com](mailto:revdcom@btinternet.com)
- Secretary:** The Revd. Bruce Carlin ☎ 0113 286 2710  
The Rectory, Church Lane, Kippax,  
LEEDS. LS25 7HF Email: [brucecarlin@cooptel.net](mailto:brucecarlin@cooptel.net)

## Life Members

W.Alexander  
E.A.Bailey  
L.Batty  
D.Boddy  
D.Brown  
J.Caldwell  
W.P.B.Carlin

R.Cleaves  
H.Costello  
P.Couch  
T.R.Fisher  
A.J.Foster  
J.Garton  
G.D.Geddes

D.S.H.Hulme  
M.Joy  
J.S.Loxton  
W.M.Northcott  
D.C.Nye  
T.R.Partridge  
B.E.Shephard

M.Smith  
B.Stevenson  
M.J.Thistlewood  
P.T.Waterfield  
S.Whitmore  
M.J.Williamson  
A.Yates

## Subscriptions

Life membership £65.00  
Annual membership £ 5.00

Current Membership Year : October 2009 to September 2010

Under the terms of the Data Protection Act we are exempt from registering providing members are aware of, and do not object to, the use of computers in the keeping of membership records. The Secretary holds members' name, address, phone number, fax and email addresses where provided, their CCCC division, and possible membership of a team, and the Treasurer holds members' subscription records.

This issue is timed to be published about a month before the end of our current season and is hopefully a timely reminder to those of you who have not yet completed your games to do so now.

**Please make sure that I receive outstanding results or claims for adjudication by 31st July.**

We haven't actually had any games for adjudication for some years now so I am not wasting a page of this magazine repeating the procedure. If anyone does need to submit an adjudication and has not got this information handy, then please request it.

I will be on holiday in early September, but if I get results on time I should be able to get the new season underway before I go. I will email the final results and put them on the web site. If you can't receive email and don't want to wait until the October magazine please send me a stamped address envelope and I will send you a printed copy.

*If you are presently a **LEAGUE MEMBER** and have completed your games this year I will assume you wish to continue playing in the league next season. If you do not please let me know by 31st July.*

*If you are a **NON-LEAGUE MEMBER** or if you **WITHDREW** this season you **MUST** tell me by 31st July if you want to be included in the league next season. If you have not played for a while tell me which Division you used to be in and if there is space I will enter you where your strength deserves rather than you starting from the bottom.*

Our thanks to those who have sent in games for publication and to Michael Thistlewood for preparing them for the magazine. Please continue sending in your games, with analysis where possible. Any game score sent will be considered for publication unless you state that you do not want this.

The response to last summer's survey on Division sizes showed most members preferring fewer Divisions of 7 players rather than more Divisions with fewer players, and I will abide by this if numbers fall to the level where this becomes possible, but my own experience of the last two seasons (see elsewhere in this magazine) suggests that fewer games can perhaps lead to a higher standard of play. This was the reason for changing our structure some years ago from two games against each of 4 opponents to one game against each of six. I can't help feeling that (at least for those of us still in active ministry) perhaps even fewer games might lead to a higher standard of play. However, in the end it will depend on how many active players we have for next season.

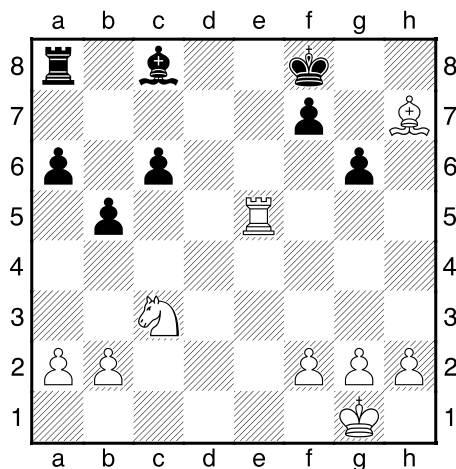
**Bruce Carlin (Secretary)**

**Caldwell J. – Smith M. [E51]**

Division 1 2009 – 2010

1.d4 ♘f6 2.c4 e6 3.♘c3 ♙b4 4.e3 0-0 5.♙d3 d5  
6.♘f3 c6 7.0-0 ♗bd7 8.♖c2 dxc4 9.♙xc4 b5  
10.♙d3 a6 11.e4 e5 12.dxe5 ♗g4 13.♙f4 ♖e8  
14.♖ad1 ♗e7 15.e6 ♗xe6 16.e5 ♗dxe5 17.♗xe5  
♗xe5 18.♖fe1 ♗f6 19.♙xh7+ ♔f8 20.♗e4 ♙d6  
21.♖xd6 ♗xd6 22.♙xe5 ♖xe5 23.♗xe5 ♗xe5  
24.♖xe5 g6

Diagram



25.♗e4 ♙f5 26.♖xf5 gxf5 27.♙xf5 ♖d8 28.g4 ♖d5  
29.h4 ♔g7 30.h5 c5 31.f4 c4 32.♔f2 b4 33.♔e3  
♖d3+ 34.♔e2 ♖d5 35.♗g3 ♖a5 36.♙b1 b3  
37.axb3 cxb3 38.♔d2 ♖a4 39.♙e4 ♖c4 40.g5 a5  
41.h6+ ♔h8 42.f5 ♖c5 43.g6 ffg6 44.fgg6 ♖e5  
45.g7+ ♔g8 46.♙g6 ♖d5+ 47.♔e3 ♖e5+ 48.♔f4  
1-0

**Williamson M. - Thistlewood M. [B27] Clergy**

Division 4 2009-2010

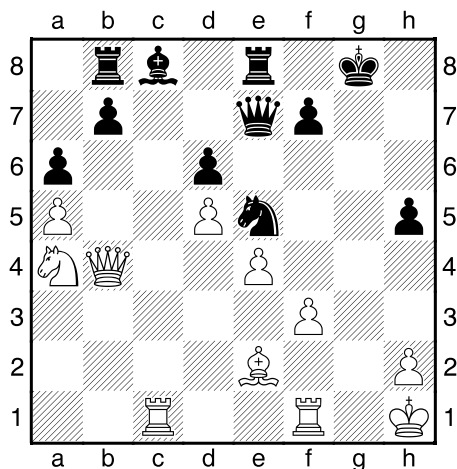
1.e4 c5 2.♗f3 b6 3.♙c4 ♙b7 4.♘c3 e6 5.0-0 ♗c6  
6.d4 cxd4 7.♗xd4 g6 8.♗cb5 a6 9.♗xc6 ♙xc6  
10.♗c3 b5 11.♙d3 ♙c5 I should have put this on  
g7 12.♗e2 ♙e7 13.♙e3 ♙f6 14.♗d4 ♙b7 15.♗d2  
♙g7 16.f4 ♗e7 17.f5 ♗c6 18.♗xc6 ♙xc6 19.♙h6  
♙xb2 20.♖ae1 ♙d4+ 21.♔h1 ♗b6 22.fgg6 hgg6  
23.e5 ♗c5 24.♙g7 ♖h4 25.♗g5 ♖h5 26.♗f4 ♗e7  
Should have played Rf5 27.♗xd4 ♙xg2+  
28.♔xg2 ♗g5+ 29.♔h1 ♗g3 30.♖e2 f5 31.exf6  
1-0

**Caldwell J. – Whitmore S. [A77]**

Division 1 2009 - 2010

1.d4 ♗f6 2.c4 e6 3.♗f3 c5 4.d5 exd5 5.cxd5 d6  
6.♗c3 g6 7.♗d2 ♙g7 8.e4 0-0 9.♙e2 ♖e8 10.0-0  
♗bd7 11.a4 ♗e5 12.♗c2 ♙g4 13.f3 ♙d7 14.♗c4  
♗xc4 15.♙xc4 a6 16.♔h1 ♗h5 17.g4 ♗f6 18.♙f4  
♗c7 19.♗d2 ♖ab8 20.a5 ♙c8 21.♗a4 ♗d7  
22.♙e2 ♙e5 23.♙xe5 ♗xe5 24.♖ac1 ♗e7 25.b4  
cxb4 26.♗xb4 h5 27.gxh5 gxh5

Diagram



28.♗b6 ♙h3 29.♖g1+ ♔h7 30.♖g3 ♖g8 31.♗e1  
♙d7 32.♗xd7 ♗xd7 33.f4 ♗g4  
34.♙d3 ♖be8 35.h3 ♗f6 36.e5+ ♔h6 37.♔h2  
♗a4 38.♙c4 ♖xg3 39.♗xg3 ♖g8 40.♗e3 ♗e8  
41.♖c3 ♗d7 42.♙d3 ♔g7 43.e6 ♗c5 44.♖xc5  
dxc5 45.♗e5+  
1-0

**Alexander W. – Lowe D. [D38]**

Division 2 2009 - 2010

1.d4 d5 2.c4 e6 3.♗c3 ♗f6 4.♗f3 ♙b4 5.♗c2 c5  
6.cxd5 ♗xd5 7.♙d2 ♗c6 8.e3 a6 9.a3 ♙a5  
10.dxc5 0-0 11.♗xd5 exd5 12.b4 ♙c7 13.♙d3 g6  
14.0-0 ♙g4 15.♙e2 ♗e5 16.♗d4 ♗h4 17.f4 ♙xe2  
18.♗xe2 ♗g4 19.♙c3 ♗c4 20.♗d3 ♖ae8 21.♖f3  
♗e6 22.♗d4 f6 23.f5 ♗e4 24.fgg6 hgg6 25.♗xe4  
dxe4 26.♖h3 ♔g7 27.♖d1 ♖d8 28.♗d4 ♖fe8  
29.a4 g5 30.♖f1 ♔g6 31.♗f5 ♖h8 32.♖xh8 ♖xh8  
33.♗d6 ♙xd6 34.cxd6 ♗e5 35.h3 ♖d8 36.♙xe5  
fxe5 37.♖d1 ♔f6 38.♔f2 ♔g6 39.g4 ♔f6 40.♔g3  
♔e6 41.d7 ♖xd7 42.♖xd7 ♔xd7 43.h4 ♔e6  
44.hgg5 ♔f7 45.♔h4 b5 46.axb5 axb5 47.♔h5  
1-0

Bruce Carlin writes:

This season I have done rather better than I have for a long time and have won a second consecutive promotion. I am not entirely clear why, but I wonder if at least a contributory factor is the fewer games I have had to play with the lower Divisions being short of players. Whatever the reason I have reached the dizzy heights of Division 2 for next season, where I fully expect to be slaughtered and on my way back down where I belong! Bruce Carlin.

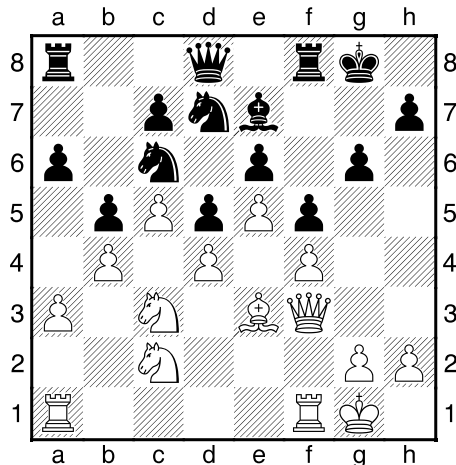
There follow two interesting games from this campaign.

**Nye D. – Carlin B. [B05]**

Division 3 2009 - 2010

1.e4 d6 2.e5 d5 3.d4 d6 4.f3 g4 5.e2 e6 6.0-0 e7 7.c4 b6 8.b3 c6 9.e3 d5 10.c5 d7 11.c3 0-0 12.a3 b6 13.b4 a6 14.e1 xe2 15.xe2 b5 16.d3 g5 17.f4 e7 18.e1 g6 19.c2 f6 20.g4 f5 21.f3

Diagram



The position was rather gridlocked and so I played a5 in an attempt to break this, but it lost me a pawn. However it opened up the position and pieces started to fall. Both of us probably missed chances (notes by Bruce Carlin in agreement with David Nye).

21...a5 22.xb5 axb4 23.xb4 xb4 24.axb4 xa1 25.xa1 c6 26.a3 xa8 27.c2 b7 28.f1 xa8 29.xa8+ xa8 30.a1 xa1+ 31.xa1 b8 32.f2 f8 33.c2 e8 34.h3 a6 35.d2 d7 36.f3 c7 37.e1 b7 38.h4 c7 39.a1 a6 40.g3 b5 41.e3

My King has moved quite a way for a piece that can only move one square at a time.

41...c4 42.c2 b5 43.d2 c3 44.xc3 xc3 45.e1 xb4 46.c3

Achieving a breakthrough with 12 pawns still on the board remained a problem and by now we agreed that the situation was hopeless and settled for a draw.

David suggested that we go back to move 21 and play on as a friendly, but the problem of breaking out of the gridlock remained, and after 21 ...Rb8 22.Qe2 Ne7 23.Rfb1 c6 we decided that we should probably have agreed a draw at that point in the first place and saved ourselves a lot of trouble! 1/2-1/2

**Carlin B. – Loxton J. [B22]**

Division 3 2009 - 2010

1.e4 c5 2.c3 f6 3.e5 d5 4.d4 cxd4 5.f3 c6 6.cxd4 d6 7.c4 dx5 8.dxe5 e6 9.0-0 b6 10.b5 d7 11.e3 a6 12.xc6 xc6 13.xd8+ xd8 14.xb6

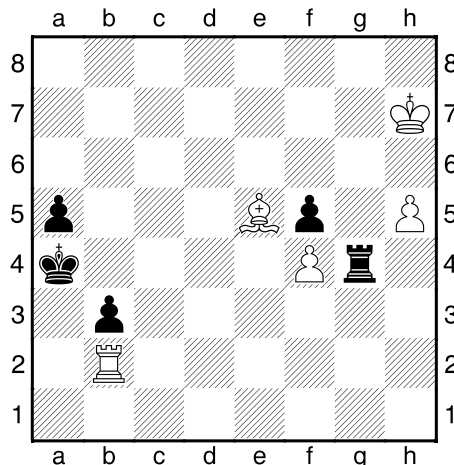
In this marathon game against John Loxton (notes by Bruce Carlin with comments by John Loxton) things were initially going in my favour after winning a piece on move 14

14...d7 15.c3 xf3 16.gxf3 b4 17.ad1 xc3 18.bxc3 e7 19.c5+ d8 20.d6 xd6 21.exd6 d7 22.d1

I was beginning to lose my way. John said that he was happy to have isolated three of my pawns and always felt he had my d pawn (which I felt I should have made a better effort to promote) under control and had move 32 ... f6 in reserve to collect the pawn anyway.

22...xc8 23.b4 b6 24.d4 g6 25.e4 a5 26.a3 xc3 27.b2 c2 28.e5 c6 29.g2 b5 30.a4 b4 31.e3 b6 32.f4 f6 33.xf6 xd6 34.b3 d5 35.d8 c4 36.b1 a6 37.g3 b3 38.f6 d6 39.h4 h5 40.f5 exf5 41.e5 d5 42.f4 d2 43.b2 d3 44.g5 d5 45.f4 d3 46.xg6 g3+ 47.xh5 g4 48.h6 b4 49.h5 xa4 50.h7

Diagram



By move 50 I was more in danger of losing (John agrees that at this stage he felt he had hopes of a win), with the Black a and b pawns threatening promotion.

50...♖g3 51.h6 ♜b4 52.♜h8 a4 53.♙d6+ ♜c4 54.♙a3

This move looked like controlling the situation and a draw started to look the most likely outcome, since if the Rooks went in eliminating the pawns, my Bishop advantage would be insufficient to force mate. By this stage I knew that a draw would be sufficient to ensure promotion anyway, but as long as I didn't lose in the attempt, I still thought it worth while trying for a win.

54...♜d5

In moving his attack over to the King's side I felt Black let me off the hook a bit, but John says that he had given up hope of promoting his passed pawns by then and felt it better to move across to stop my advance. In the end 59 Rg8 probably ensured the win and this became clear a couple of moved later.

55.♞e2 ♞f3 56.♞e5+ ♜d4 57.♞xf5 ♜e4 58.♞f8 ♞g3 59.♞g8 ♞d3 60.h7 ♞d7 61.♞f8 1-0

### Hulme D. – Caldwell J. [A45]

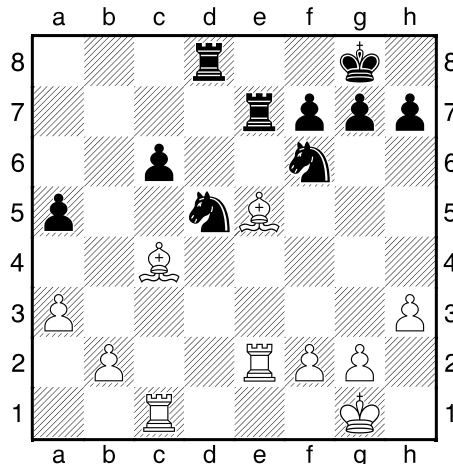
Division 1 2009 - 2010

1.d4 ♘f6 2.♙g5 ♘e4 3.♙f4 c5 4.f3 ♘f6 5.dxc5 e5 6.♙xe5 ♙xc5 7.♙d6 ♞b6 8.♙xc5 ♞xc5 9.♞d2 ♘c6 10.♘c3 d5 11.e3 0-0 12.0-0-0 ♞e8 13.♘ge2 ♞xe3 14.♞xe3 ♞xe3 15.♘xd5 ♘xd5 16.♞xd5 ♙e6 17.♞d6 ♞e8 18.♜d2 ♞e5 19.♘c3 ♞c8 20.a3 ♘e7 21.♙d3 ♘f5 22.♙xf5 ♞xf5 23.♞e1 ♞fc5 24.♞e3 h6 25.♞ed3 ♜h7 26.♞d8 ♞8c7 27.♜d1 g5 28.g3 ♜g7 29.♞d2 ♞f5 30.♞f2 b6 31.♘e2 ♞b5 32.b3 ♞c8 33.♞d6 ♞d5+ 34.♞xd5 ♙xd5 35.♘d4 ♙b7 36.♘f5+ ♜h7 37.f4 ♞c7 38.c4 ♜g6 39.♘d6 ♙c6 40.b4 ♙a4+ 41.♜c1 ♞d7 42.♞d2 gxf4 43.gxf4 ♞e7 ½-½

### Lowe. D. – Couch P. [C78]

Division 2 2009 - 2010

1.e4 e5 2.♘f3 ♘c6 3.♙b5 a6 4.♙a4 ♘f6 5.0-0 ♙c5 6.♘xe5 ♘xe5 7.d4 b5 8.♙b3 ♙xd4 9.♞xd4 ♘c6 10.♞c5 ♞e7 11.♞xe7+ ♘xe7 12.♞e1 0-0 13.♙f4 d6 14.c4 ♙e6 15.♘d2 bxc4 16.♘xc4 ♞ad8 17.♞ac1 ♙xc4 18.♙xc4 a5 19.e5 dxe5 20.♙xe5 ♘ed5 21.a3 ♞fe8 22.h3 c6 23.♞e2 ♞e7 Diagram



24.♙a6 ♞dd7 25.♞xc6 ♘e8 26.♞c8 ♘dc7 27.♙xc7 ♞xe2 28.♙xe2 ♜f8 29.♙xa5 1-0

### Thistlewood, M. – Cleaves R. [C30]

Clergy Division 4 - 2009-2010

1.e4 e5 2.f4 ♙c5 3.♘f3 d6 4.d4 exd4 5.♘xd4 ♘f6 6.♘c3 ♘c6 7.♙b5 ♙d7 8.♘xc6 ♙xc6 9.♙xc6+ bxc6 10.♘a4 ? 10...♘xe4 11.♘xc5 ♘xc5 12.0-0 0-0 13.♞e1 ♞e8 14.♙d2 h6 15.♞f3 d5 16.♞xe8+ ♞xe8 17.♞e1 ♞d7 18.b3 a6 19.♙b4 ♘e6 20.♞g3 ♞e8 21.♙c3 f5 22.♞e5 ♞f7 23.b4 c5 24.bxc5 c6 25.a4 ½-½

### CCCC RESULTS : 2009 / 2010

DIVISION 1	C	Hu	W	S	N	G	Ha	Points	%
Caldwell		½	1	1	1	1	V	4½ / 5	90
Hulme	½			1	½		V	2 / 3	67
Whitmore	0			1		1	V	2 / 3	67
Smith	0	0	0			1	V	1 / 4	25
Northcott	0	½				0	V	½ / 3	17
Geddes	0	0	0	0	1		V	1 / 5	20
Harper	V	V	V	V	V	V		void	

DIVISION 2	Y	A	L	C	P	-	-	Points	%
Yates		1	1	½	1	-	-	3½ / 4	88
Alexander	0		1	1	1	-	-	3 / 4	75
Lowe	0	0		1	1	-	-	2 / 4	50
Couch	½	0	0		1	-	-	1½ / 4	38
Partridge	0	0	0	0		-	-	0 / 4	0
-	-	-	-	-	-		-	-	-
-	-	-	-	-	-	-		-	-

DIVISION 3	N	C	F	L	S	-	-	Points	%
Nye		½	1	1	V	-	-	2½ / 3	83
Carlin	½		½	1	V	-	-	2 / 3	67
Foster	0	½		½	V	-	-	1 / 3	33
Loxton	0	0	½		V	-	-	½ / 3	17
Shephard	V	V	V	V		-	-	void	
-	-	-	-	-	-		-	-	-
-	-	-	-	-	-	-		-	-

DIVISION 4	H	W	C	T	B	-	-	Points	%
Hall		1	½	½	V	-	-	2 / 3	67
Williamson	0		1	1	V	-	-	2 / 3	67
Cleaves	½	0		½	V	-	-	1 / 3	33
Thistlewood	½	0	½		V	-	-	1 / 3	33
Boddy	V	V	V	V		-	-	void	
-	-	-	-	-	-		-	-	-
-	-	-	-	-	-	-		-	-

**CONGRATULATIONS TO  
JUSTIN CALDWELL  
CCCC CHAMPION 2009/10**

These are the results up to 27 June 2010.

Justin Caldwell is confirmed as this year's outright winner, but there remains a tight relegation struggle, potentially involving everyone else in Division 1, and these are the only results outstanding this season.

Division 2 sees Andrew Yates victorious from Wilf Alexander, both of whom go up. David Lowe should stay put on 50% while Peter Couch and Tim Partridge will be relegated.

David Nye wins Division 3 from Bruce Carlin, who is also promoted. Antony Foster & John Loxton will be relegated to Division 4 if there is one next season, along with Brian Shephard who defaulted.

Division 4 sees Stanley Hall victorious, winning on tie break (the games between the players) from Michael Williamson, but both are promoted. Richard Cleaves beats Michael Thistlewood on the 5<sup>th</sup> tie break criterion (most black draws), with David Boddy's games declared void.

Please let me have your results as you complete your games, and certainly by 31<sup>st</sup> July. Please also consider sending the score sheet (annotated if possible) for inclusion in the magazine.